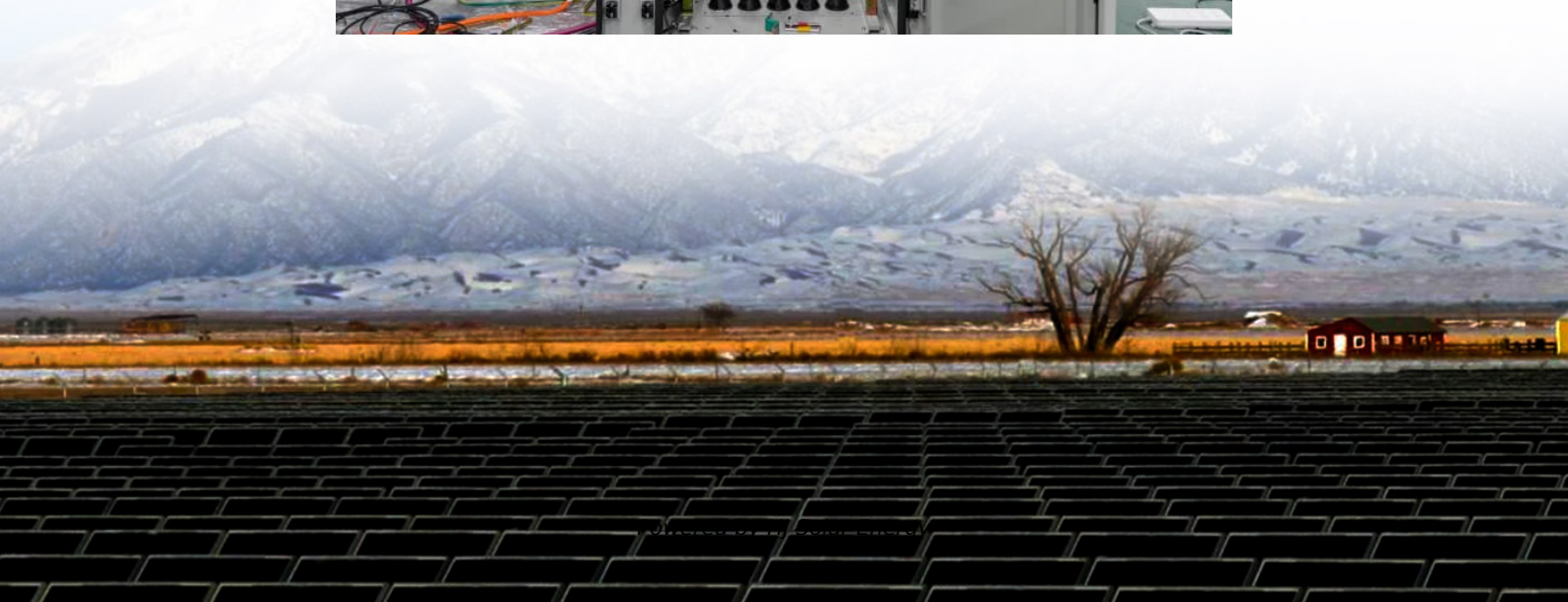
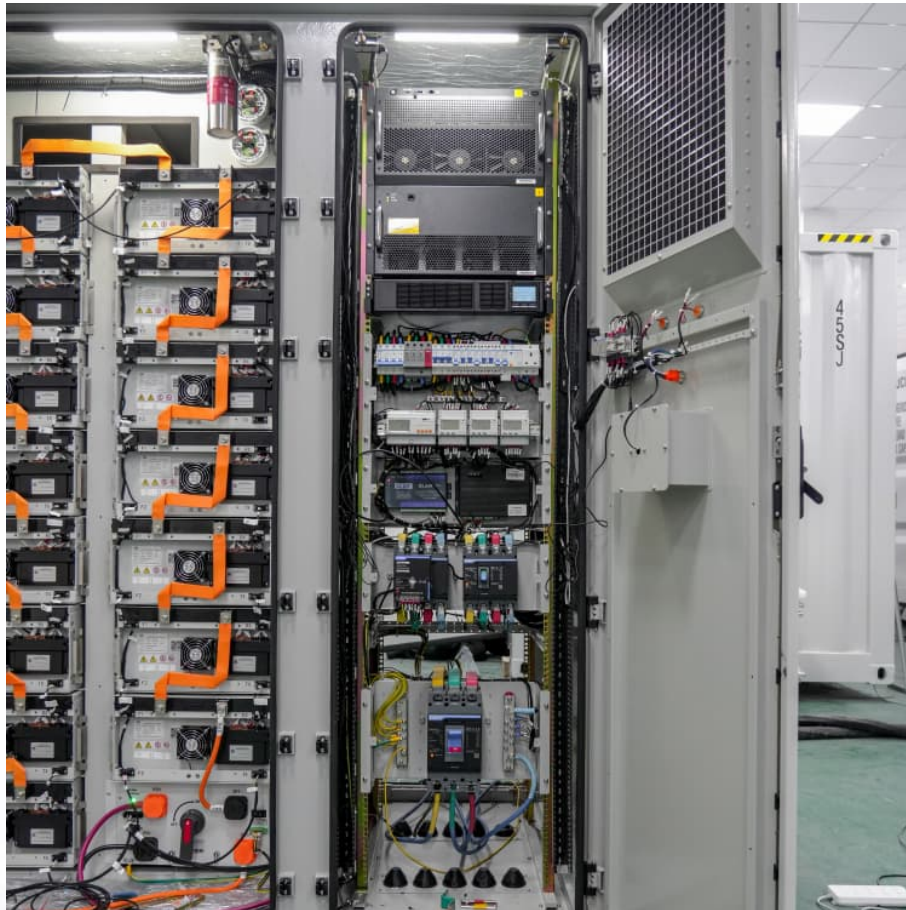


# **10 amp pwm solar charge controller flashing battery light**





## Overview

---

Solar charge controller battery icon flashing means that the battery is not charging properly, which may be caused by insufficient battery power, charging problem, ambient light change, controller malfunction or bad weather conditions. Solar battery light blinking yellow means the.

Solar charge controller battery icon flashing means that the battery is not charging properly, which may be caused by insufficient battery power, charging problem, ambient light change, controller malfunction or bad weather conditions. Solar battery light blinking yellow means the.

What do the different blinking and flashing lights on a solar charge controller mean?

The icon and lights on the solar controller flash or change color for the solar panels, battery, and loads that are explained as fellow. Solar panel flashing green light When the solar controller detects solar.

Solar Charge Controller blinking can indicate either normal processes happening or something went wrong. If a warning light is blinking on the Solar Charge Controller, it may be due to faulty wiring, battery over-charging or under-charging, or equipment failure. So you have to make sure your system.

The first step to take when diagnosing a charge controller is confirming all connections are tight and secure on the controller. First connect the controller to the battery bank and then to the solar array, be sure to firmly tighten the controller terminal screws to ensure safe and secure.

Sometime, on the LCD display, the left arrow, the one between the solar panel and the battery (also called "charging symbol" in the manual) is blinking. Moreover, there seems to be two different blinking speeds. I didn't found any explanation. So, what does the blinking of the charging arrow means?

.

Yesterday the battery light began fast flashing, indicating "battery



overcharged". However when I take a reading at the battery terminals with a volt meter it reads "12.5V" which seems a safe figure to find, and doesn't square with it being overcharged. I'm wondering if I may have a fault in the.

The charge controller on this new solar panel just keeps blinking on and off. Is there like a way to reset it Sorry to hear about your controller! I went ahead and investigated this issue, and I discovered that if the controller of the Go Power Solar Panel # 34282610 continuously blinks on and off. Why is my solar charge controller blinking?

If a warning light is blinking on the Solar Charge Controller, it may be due to faulty wiring, battery over-charging or under-charging, or equipment failure. So you have to make sure your system is properly wired, your equipment is up to date, and your battery is being charged properly.

What does a solar charge controller battery blinking green mean?

solar charge controller battery blinking green means the battery is fully charged and in a saturated state, A flashing red battery light means the battery is undercharged and needs to be recharged in time. Solar controller loads are small DC devices that can be powered directly by a solar battery.

Why is my solar charge controller not working?

One common issue that arises with solar charge controllers is fluctuating battery voltage, which can often be resolved through vigilant monitoring and appropriate adjustments. Check the output voltage regularly to make sure it meets system requirements. Lower voltage issues may indicate a need for controller adjustments or battery maintenance.

What is a solar charge controller?

A solar charge controller is an essential component of any solar power system. It typically has a series of on-screen icons and indicator lights that show the status of the system. These icons or lights will blink, flash, or display different colors to indicate different system statuses.

What does a flashing light mean on a PV system?

The opposite slow flashing means your battery is losing power. Load Icon: This is the load you put on your PV system. This icon lets you know if it's big, small, or perfect. Depending on the Charge Controller, Light Blinking here means Overloading and Short-circuit.



Can a solar charge controller cause overcharging?

Overcharging problems in solar charge controllers can substantially impact battery life and pose potential safety hazards. When a controller fails to regulate the charging current properly, it can lead to excessive voltage being delivered to the battery, causing overcharging.



## 10 amp pwm solar charge controller flashing battery light

---



### Luminous solar charge controller Installation Problem , Light Blinking

Luminous solar charge controller Installation and light problem solved , Battery connection. luminous solar charge controller light blinking, luminous solar charge controller red ...

### Luminous solar charge controller Installation Problem , Light ...

Luminous solar charge controller Installation and light problem solved , Battery connection. luminous solar charge controller light blinking, luminous solar charge controller red light blinking



### Charge Controller Troubleshooting

Yesterday the battery light began fast flashing, indicating "battery overcharged". However when I take a reading at the battery terminals with a volt meter it reads "12.5V" which ...

### Solar Charge Controller Keeps Blinking/ Flashing: Reasons and ...

Is your Solar Charge Controller Blinking? Learn what might be the reason and what steps you can take to fix this issue in the article.



### How to Fix the Blinking Icons on My Go Power Solar Panel

Sorry to hear about your controller! I went ahead and investigated this issue, and I discovered that if the controller of the Go Power Solar Panel # 34282610 continuously blinks ...



### [A Guide to Troubleshooting of Solar Charge ...](#)

The battery capacity is too small, and the battery time is short, regardless of whether the design is reasonable. There is a tendency for the battery to age, degradation occurs, and the battery should be replaced regularly.



### [PWM Charge Controller LCD& USB : arrow blinking?](#)

When the first arrow is on there is energy available and the battery is loading. When the first arrow blinks there is energy available from the solar panel, but no loading takes place.





### [PWM Solar Charge Controllers Error Codes And Basic ...](#)

To determine if a solar charge controller is faulty, start by reading the controller's LED display for any error codes or unusual indicators. You can also use a ...



### **5 Solar Charge Controller Problems (What Causes Them?) , Discover Solar**

This issue may stem from a malfunction in the MPPT solar charge controller or the solar panels themselves. To troubleshoot, check for shading on the panels, faulty wiring ...

### [5 Solar Charge Controller Problems \(What Causes ...](#)

This issue may stem from a malfunction in the MPPT solar charge controller or the solar panels themselves. To troubleshoot, check for shading on the panels, faulty wiring connections, or incorrect settings on the ...



### [A Guide to Troubleshooting of Solar Charge Controllers](#)

The battery capacity is too small, and the battery time is short, regardless of whether the design is reasonable. There is a tendency for the battery to age, degradation ...



## Contact Us

---

For catalog requests, pricing, or partnerships, please visit:  
<https://www.conrad.edu.pl>