

160 watt solar panel how long to charge battery





Overview

How to calculate charging time of battery by solar panel?

Divide the battery's watt-hours by the panel's wattage, then add 20% to account for power loss. Convert battery capacity from Ah to Wh by multiplying with voltage. Factor in 20-30% efficiency loss from.

How to calculate charging time of battery by solar panel?

Divide the battery's watt-hours by the panel's wattage, then add 20% to account for power loss. Convert battery capacity from Ah to Wh by multiplying with voltage. Factor in 20-30% efficiency loss from.

Use our solar battery charge time calculator to find out how long will it take to charge a battery with solar panels. Optional: If left blank, we'll use a default value of --- 50% DoD for lead acid batteries and 100% DoD for lithium batteries. Note: The estimated charge time of your battery will be.

Several factors influence how long it takes a solar battery to be charged. Below are details on some of the most impactful. Panel wattage: The wattage of a solar panel determines how quickly it can supply energy. If the panel's wattage is high, it can send energy to the battery more quickly, and.

The Solar Battery Charge Time Calculator determines the time required to fully charge a solar battery based on various input parameters. Its primary use is to assist in optimizing solar energy systems, providing insights into the efficiency of solar panels, and planning energy storage solutions. By.

In that case, you know it'll take about 2 days for your solar panel (s) to charge your battery. Besides using our calculator, here are 3 ways to estimate how long it'll take to charge a battery with solar panels. I'll run through each method step by step, starting with the simplest and ending with.

In order to calculate how long it takes for your solar battery to be charged, you need to first start with the following key data. 1. Wattage of solar panel (W) If you only have one solar panel, you only need to input the rated wattage



of this solar panel into the calculator, of course, if you need.

Solar panel charging time calculators aid in estimating the duration required for solar panels to charge a battery. Here's a guide for using these calculators: Input the battery voltage, e.g., 12V for a 12-volt battery. Enter the battery's amp-hour capacity, converting from watt-hours if necessary. How long does a solar panel take to charge?

Consider the case of Alex, a homeowner planning to install a solar system. With a 120Ah battery and a 250W solar panel, Alex uses the calculator to determine the charge time. With 4.5 hours of daily sunlight, the charge time is estimated at 2.67 hours. This insight helps Alex decide to invest in an additional panel to improve efficiency.

How to calculate solar battery charge time?

Output power (W) = total watts (W) x conversion efficiency of the solar system x (1 - charge controller's power consumption rate) Substitute the data to get the output power of your solar panel is 1615W, and then finally divide the solar battery charge by the output power of the solar panel to get the charging time, i.e.:

How long does it take a 300W solar panel to charge?

For instance, at 6 peak hours and 25% system losses (efficiency is 75%), a single 300W solar panel can fully charge a 12V 50Ah battery in roughly 10 hours and 40 minutes. Let's understand it in detail, Therefore, the required number of hours = $600 / 56.25 = 10$ hours and 40 minutes.

How much power does a solar charge controller use?

Under normal circumstances, the power consumption rate of solar charge controllers is between 5% and 10%. 6. How to Calculate the Time Required to Charge a Solar Battery After getting the above data, you can calculate how long it will take to charge your solar battery.

How to charge a solar battery?

First of all, you need to start by converting the battery capacity of your solar battery from Ampere hours to Watt hours, ie: Watt-hours (Wh) = Amp-hours (Ah) x Voltage (V) Substituting the data gives you 960Wh for your solar battery. Then, you need to know how much you need to charge your solar battery, i.e.:



How do you calculate battery charge time?

Dividing the battery amp-hours (Ah) by the solar panel's output amps (Ah ÷ charging amps) is the most inaccurate way to calculate the battery charge time. Instead, use this formula: This method takes into account most of the real-world factors that affect the battery's charge time. Or follow these steps:



160 watt solar panel how long to charge battery



How Long to Charge Battery Solar Panel: Tips for Faster ...

Discover how long it takes to charge a solar panel battery and optimize your solar energy use. This article breaks down essential factors influencing charging times, from ...

How Long Does a 160 Watt Solar Panel Take to Charge a Battery...

So you've got this shiny 160 watt solar panel sitting on your roof, van, or backyard setup. But here's the million-dollar question: how long will it actually take to charge your battery?



[160 watt solar panel how long to charge battery?](#)

The charging time for a 200 amp-hour battery using a 160 watt solar panel can range from 6 hours in the summer to 27 hours in the winter. It is important to consider these factors when choosing ...

[Solar Battery Charge Time Calculator](#)

The Solar Battery Charge Time Calculator determines the time required to fully charge a solar battery based on various input parameters. Its primary use is to assist in ...



Solar Panel Charge Time Calculator

As you can see from the above calculations, there are many formulas to calculate the charging time of solar batteries. If you want to rely solely on formulas to calculate how long ...



Solar Panel Charge Time Calculator: Accurately Estimate How Long ...

Whenever you need to calculate the charge time of your solar panel batteries, you can always turn to a solar panel charge time calculator. The battery or energy storage ...



How Long to Charge Battery Solar Panel: Tips for Faster Charging ...

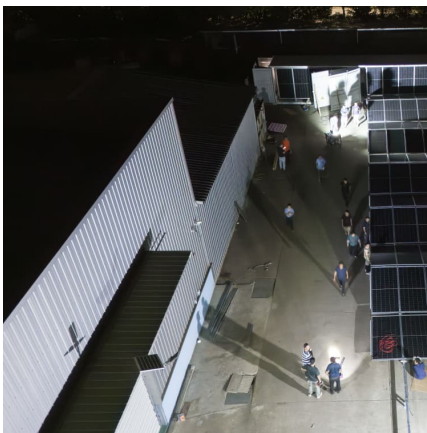
Discover how long it takes to charge a solar panel battery and optimize your solar energy use. This article breaks down essential factors influencing charging times, from ...





How Long Does a 160 Watt Solar Panel Take to Charge a ...

So you've got this shiny 160 watt solar panel sitting on your roof, van, or backyard setup. But here's the million-dollar question: how long will it actually take to charge your battery?

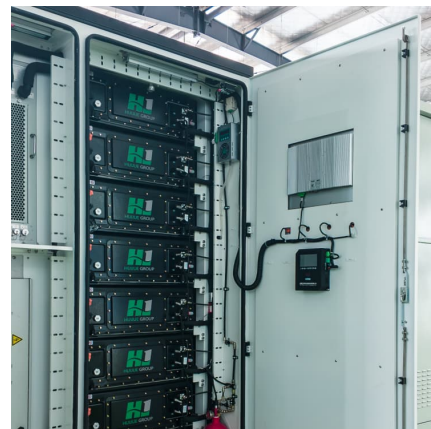


[Solar Panel Charge Time Calculator: Accurately ...](#)

Whenever you need to calculate the charge time of your solar panel batteries, you can always turn to a solar panel charge time calculator. The battery or energy storage calculator does all the maths for you.

Solar Panel Charge Time Calculator

As you can see from the above calculations, there are many formulas to calculate the charging time of solar batteries. If you want to rely solely on formulas to calculate how long it takes to charge your solar batteries, it will ...



Contact Us

For catalog requests, pricing, or partnerships, please visit:
<https://www.conrad.edu.pl>