

# **20 amp solar battery configuration**





## Overview

---

The solar charger can be installed in a positive or in a negative grounded system. Apply a single ground connection, preferably close to the battery, to prevent system issues or ground loops.

The solar charger can be installed in a positive or in a negative grounded system. Apply a single ground connection, preferably close to the battery, to prevent system issues or ground loops.

Start Dead Batteries - Safely jump start a dead battery in seconds with this compact, yet powerful, 1000-amp lithium battery jump starter - up to 20 jump starts on a single charge - and rated for gasoline engines up to 6.0-liters and diesel engines up to 3.0-liters. [ LONG-LASTING POWER ] 8-pack.

This guide walks through essential terminology, step-by-step sizing methods, battery type comparisons, system configurations, and practical sizing formulas so you can make informed decisions. Understanding the factors influencing battery size is crucial for optimizing your solar power system's.

To charge a 12V 20Ah battery, you need a solar panel of at least 100W. This panel produces about 5A. If you get 6 hours of sunlight daily, a 100W panel provides enough energy. Consider adjusting the panel size based on charging time, sunlight hours, and your energy usage for optimal results. For a.

A 20 amp solar charger setup is a great option for people who need a reliable and efficient way to store energy from solar panels into a battery. A 20 amp solar charger plays an important role in controlling how much energy is sent to the battery from the solar panels. With the right setup, it.



## 20 amp solar battery configuration

---



### What Size Solar Panel to Charge 20Ah Battery: A Complete ...

Discover how to choose the right solar panel to charge a 20Ah battery in our comprehensive guide. Learn essential calculations, key factors like battery capacity, sunlight ...

### MPPT Solar Controller

Whilst PWMs simply reduce the voltage of the panel to the voltage of the battery resulting in significant power losses, MPPT controllers convert those volts into amps which then safely flow ...



### Choosing the Right Battery Size For Your Solar System , SolarEdge

This article guides homeowners and solar enthusiasts through the process of choosing the right battery size by exploring key factors, calculation methods, and best practices for optimising ...

### What Size Solar Panel to Charge a 20Ah Battery: Efficient ...

To charge a 12V 20Ah battery, you need a solar panel of at least 100W. This panel produces about 5A. If you get 6 hours of sunlight daily, a



100W panel provides enough ...

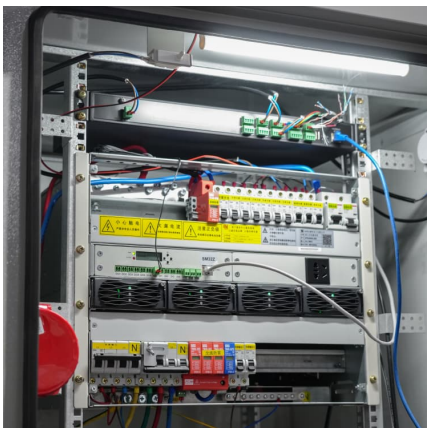


#### 4. Installation

The solar charger can be installed in a positive or in a negative grounded system. Apply a single ground connection, preferably close to the battery, to prevent system issues or ground loops.

#### Sizing and Building a Battery Bank

You can change battery type, (LFP or AGM) battery voltage and amp-hours and solar panel size and numbers. Using the Online Test Drive you can see the performance effect of changing the number of batteries or solar panels.



#### 5. Configuration and settings

When setting up the network, first set up the Smart Battery Sense or battery monitor, and then add one or more solar chargers or AC chargers to the network. All solar chargers and AC ...



## Sizing and Building a Battery Bank

You can change battery type, (LFP or AGM) battery voltage and amp-hours and solar panel size and numbers. Using the Online Test Drive you can see the performance effect of changing the ...

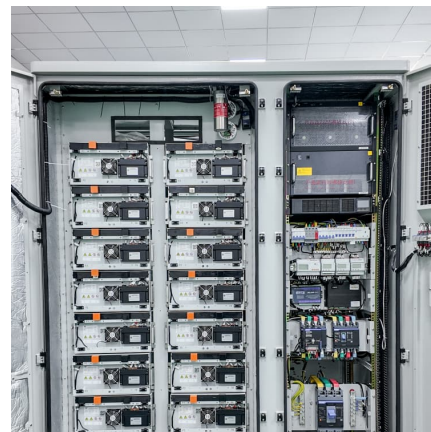


## How to Do a 20 Amp Solar Charger Set Up: Easy Steps for ...

A 20 amp solar charger setup is a great option for people who need a reliable and efficient way to store energy from solar panels into a battery. A 20 amp solar charger plays ...

## Build Guide

Building a solar battery bank is essential for storing energy effectively in off-grid or backup systems. Whether you're powering a cabin, RV, shed, or prepping for emergencies, this guide ...



## [How to Do a 20 Amp Solar Charger Set Up: Easy ...](#)

A 20 amp solar charger setup is a great option for people who need a reliable and efficient way to store energy from solar panels into a battery. A 20 amp solar charger plays an important role in controlling how much energy ...



## Contact Us

---

For catalog requests, pricing, or partnerships, please visit:  
<https://www.conrad.edu.pl>