

200 watt solar panel how long to charge battery





Overview

Charging time: A 200-watt solar panel can charge a battery at a rate of around 10-20 amps per hour, which means it can charge a typical 12V battery in approximately 5-10 hours.

Charging time: A 200-watt solar panel can charge a battery at a rate of around 10-20 amps per hour, which means it can charge a typical 12V battery in approximately 5-10 hours.

Use our solar battery charge time calculator to find out how long will it take to charge a battery with solar panels. Optional: If left blank, we'll use a default value of --- 50% DoD for lead acid batteries and 100% DoD for lithium batteries. Note: The estimated charge time of your battery will be.

A 200W solar panel can charge a battery in 5 hours. This assumes the battery has a capacity of 75ah and is rated at 12 volts. Because solar panel output is in watts and battery capacity is in amps, we need to do some conversions. Multiply battery amp hours by its voltage to get the watts t ($AH \times V$).

Choosing the right solar panel size depends on two key factors: For example: A standard 12V 100Ah battery stores 1,200Wh ($12V \times 100Ah$) of energy. If you aim to fully charge it in one day (assuming 5 hours of peak sun), you would need about 240W of solar power, factoring in efficiency losses (~20%).

Final Answer□ Charging a 12-volt battery with a 200-watt solar panel typically takes between 5 to 8 hours to fully charge. The specific duration depends on several factors, including the quality of the solar panels, the efficiency of the charge controller, the condition of the battery, and the.

Estimating how much time it will take to fully charge a battery using solar panels is not always simple. There are many different variables that will affect the ultimate result, such as the size of the battery, the efficiency of the panel, the number of hours in a day of sunlight, etc. As a result.

Many wonder how long it takes to charge a battery using a 200-watt solar panel. The answer to this question can depend on various factors. Factors



such as the capacity of the battery, the amount of sunlight the panel receives, and the efficiency of the charging process all play a role in. How long can a 200W solar panel charge a battery?

However you can use the formulas here for other battery and solar panel sizes as well. A 200W solar panel can charge a battery in 5 hours. This assumes the battery has a capacity of 75ah and is rated at 12 volts. Because solar panel output is in watts and battery capacity is in amps, we need to do some conversions.

How long does a 100 watt solar panel take to charge?

Turns out, 100 watt solar panel will take about 9 peak sun hours to fully charge a 12v 100ah lead acid battery from 50% depth of discharge. how fast should you charge your battery?

Deep cycle or solar batteries are designed to charge and discharge at a specific rate, which is referred to as the c-rating.

How much energy does a 200W solar panel use?

And what this means is that at a 100% state of charge, your battery holds 1200 Watt-hours of energy. So if your 12V-100Ah battery is completely depleted (0% state of charge), your 200W solar panel will need to produce 1200 Wh of energy or more (depending on charge controller efficiency) to charge your battery.

Can a 100 watt lithium battery be charged with a 200W solar panel?

Charging a 100ah lithium battery with a 200W solar panel is often faster compared to a 100ah lead acid battery. The Battle Born 100ah lithium batter for example, is equal to 1200 watts. However the charge time slows down at 90%, so a full lithium battery is really about 90%. With other battery types it could even be lower.

How many hours can a solar panel charge?

Generally speaking, a battery with a capacity of 100 AH will charge half the time as one with a capacity of 200 AH. The average quantity of sunshine each day when the solar panel runs at maximum capacity would be around the 5-hour level, regardless of the season.

How do you calculate battery charge time?



Dividing the battery amp-hours (Ah) by the solar panel's output amps (Ah ÷ charging amps) is the most inaccurate way to calculate the battery charge time. Instead, use this formula: This method takes into account most of the real-world factors that affect the battery's charge time. Or follow these steps:



200 watt solar panel how long to charge battery



[Solar Panel Charge Time Calculator: Accurately ...](#)

Whenever you need to calculate the charge time of your solar panel batteries, you can always turn to a solar panel charge time calculator. The battery or energy storage calculator does all the maths for you.

[How long to charge 100ah battery with 200w solar panel?](#)

Assuming you're using an MPPT solar charge controller, a 12V-200W solar panel would take 10 to 20 daytime hours to charge a completely depleted 12V-100Ah battery.



Solar Panel Charge Time Calculator: Accurately Estimate How Long ...

Whenever you need to calculate the charge time of your solar panel batteries, you can always turn to a solar panel charge time calculator. The battery or energy storage ...

How Long for a 200W Solar Panel to Charge a 12V Battery?

Understanding how long it takes for a 200W solar panel to charge a 12V battery is crucial for anyone looking to harness solar energy



effectively. By employing a simple formula, ...



How fast will a 200-watt solar panel charge a 12-volt ...

A 200-watt solar panel in full sun can charge a typical 100 amp-hour 12-volt battery from empty to full in an average of 6-8 hours or less, with higher capacity batteries taking longer.



How long does it take to charge a battery with a 200-watt solar panel

Charging time: A 200-watt solar panel can charge a battery at a rate of around 10-20 amps per hour, which means it can charge a typical 12V battery in approximately 5-10 ...



[How Long? 200W Solar Panel to Charge a 100Ah Battery](#)

On average, a 200-watt solar panel can charge a 100Ah battery in approximately 2.5 hours. The charging time may vary depending on the battery capacity





How fast will a 200-watt solar panel charge a 12-volt battery?

A 200-watt solar panel in full sun can charge a typical 100 amp-hour 12-volt battery from empty to full in an average of 6-8 hours or less, with higher capacity batteries ...

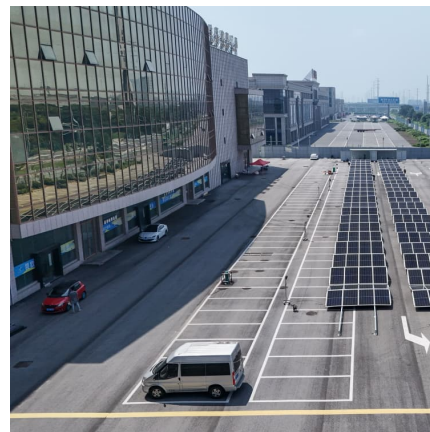


[How Long for a 200W Solar Panel to Charge a 12V ...](#)

Understanding how long it takes for a 200W solar panel to charge a 12V battery is crucial for anyone looking to harness solar energy effectively. By employing a simple formula, we can accurately estimate the charging time ...

How long does it take to charge a battery with a 200 ...

Charging time: A 200-watt solar panel can charge a battery at a rate of around 10-20 amps per hour, which means it can charge a typical 12V battery in approximately 5-10 hours.



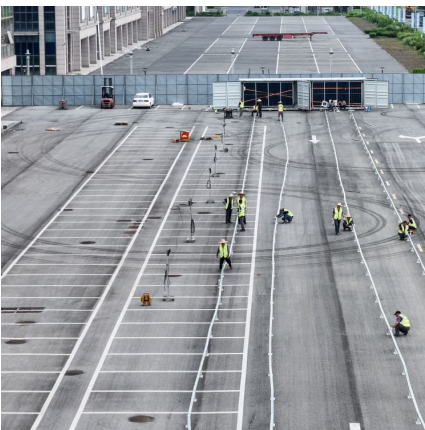
[How Long? 200W Solar Panel to Charge a 100Ah ...](#)

On average, a 200-watt solar panel can charge a 100Ah battery in approximately 2.5 hours. The charging time may vary depending on the battery capacity



How Long Does It Take A 200W Solar Panel to ...

A 200-watt solar panel, under ideal conditions, generating 1 amp of current, typically takes between 5 to 8 hours to fully charge a 12-volt battery. However, this process involves more complexity than just time.

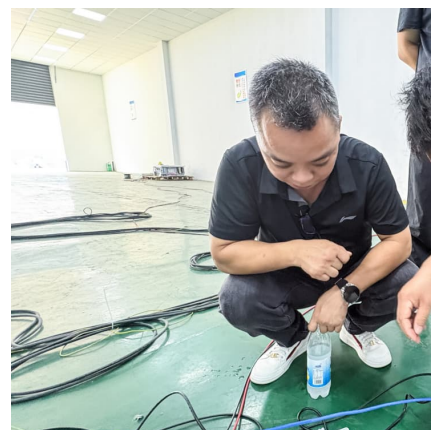


How long to charge 100ah battery with 200w solar ...

Assuming you're using an MPPT solar charge controller, a 12V-200W solar panel would take 10 to 20 daytime hours to charge a completely depleted 12V-100Ah battery.

How Long Will a 200W Solar Panel Take to Charge a Battery?

Battery charge times can be hard to estimate. Use these formulas to determine how long a 200w solar panel takes to charge batteries.





[How Long to Charge a 12V Battery with 200W Solar Panel](#)

One of the most common questions from B2B customers is: how long does it take for a 200W solar panel to charge a 12V battery? In this comprehensive guide, we will address ...

How Long Does It Take A 200W Solar Panel to Charge A 12V Battery?

A 200-watt solar panel, under ideal conditions, generating 1 amp of current, typically takes between 5 to 8 hours to fully charge a 12-volt battery. However, this process ...



Contact Us

For catalog requests, pricing, or partnerships, please visit:
<https://www.conrad.edu.pl>