

200 watt solar what size battery





Overview

Generally, for a 200 watt solar panel, you need 12v 100Ah lithium or 12v 200Ah lead-acid battery. For your convenience, here's a chart with recommended battery sizes for a 200-watt solar panel in different states.

Generally, for a 200 watt solar panel, you need 12v 100Ah lithium or 12v 200Ah lead-acid battery. For your convenience, here's a chart with recommended battery sizes for a 200-watt solar panel in different states.

Generally, for a 200 watt solar panel, you need 12v 100Ah lithium or 12v 200Ah lead-acid battery. For your convenience, here's a chart with recommended battery sizes for a 200-watt solar panel in different states. Note: This calculation is based on the number of peak sun hours your state receives.

For those using a 200-watt solar panel, you first need to answer the question: How many batteries do I need for a 200 watt solar panel?

When using a solar panel 200 watt 12 volt, the perfect match of battery you can use is a 12-volt 40Ah 500-watt-hours battery. That said, when it comes to the.

It provides a breakdown of how to calculate the number and size of batteries needed for a 200-watt 12V solar panel array, emphasizing that bigger batteries aren't always better due to longer charging times. The article outlines steps to calculate daily energy use, convert watt-hours to amp-hours.

The best battery for a 200W solar panel would be a 100ah lithium-iron battery. Lithium-ion batteries would be superior in terms of lifespan and performance. When looking at a battery for a 200W solar panel, a few elements need to be understood, and those would be: Armed with this information, you.

Choosing the right solar panel size depends on two key factors: For example: A standard 12V 100Ah battery stores 1,200Wh ($12V \times 100Ah$) of energy. If you aim to fully charge it in one day (assuming 5 hours of peak sun), you would need about 240W of solar power, factoring in efficiency losses (~20%).



But while sizing a solar system is pretty straightforward, choosing a battery size takes a bit of nuance and largely depends on how you plan on using it. In this article, we'll explore the nuances of sizing a solar battery and lay out a process for determining the ideal battery size for your needs. What battery do I need for a 200 watt solar panel?

And the power output of the solar panels will depend on how many peak sun hours your location receives. Which I'll explain in a moment. Generally, for a 200 watt solar panel, you need 12v 100Ah lithium or 12v 200Ah lead-acid battery. For your convenience, here's a chart with recommended battery sizes for a 200-watt solar panel in different states.

How much would 200W solar panels & batteries cost?

For a fixed panel, you would be looking at around \$230, while the portable ones would cost about \$430, while a sealed lead-acid battery would be around \$130, with a lithium-ion battery priced at around \$200. As demand for lithium-ion batteries grows, they are becoming cheaper.

Can a 200W solar panel use a lithium ion battery?

You can use a single 100ah lithium-ion battery or two 100ah lead-acid batteries wired in parallel with a 200W solar panel. The best battery for a 200W solar panel would be a 100ah lithium-iron battery. Lithium-ion batteries would be superior in terms of lifespan and performance.

Can a 200 watt solar panel charge a 12 volt battery?

A 200W solar panel will fully charge a 12v 100Ah battery from 100% depth of discharge in about 7.5 peak sun hours. How fast will a 200-watt solar panel charge a 12-volt battery?

A 200-watt solar panel will take anywhere between 5-15 peak sun hours to charge fully charge a 12v battery. The difference will depend on the size and type of battery.

How many amps can a 200 watt solar panel produce?

This means that a 200-watt solar panel will likely produce 60-70 amp-hours per day. If we use the above example's 225 Ah 12 V battery as our battery of choice going forward, one 200-watt solar panel will not be enough to fully charge this battery in one day, especially if you decide to go with two batteries.



What size battery do I need for a solar panel?

What size battery you need, will depend on the total power production of your solar panels. And the power output of the solar panels will depend on how many peak sun hours your location receives. Which I'll explain in a moment. Generally, for a 200 watt solar panel, you need 12v 100Ah lithium or 12v 200Ah lead-acid battery.



200 watt solar what size battery



Solar Battery Size Calculator: What size battery do I need?

What size solar panel array do you need for your home? And if you're considering battery storage, what size battery bank would be most appropriate? This article includes tables ...

What Size Solar Battery Do I Need?

In this article, we'll explore the nuances of sizing a solar battery and lay out a process for determining the ideal battery size for your needs. Team up with an Energy Advisor ...



What Size Solar Battery Do I Need?

When choosing a solar battery, pay attention to the battery's capacity, its chemistry, your energy requirements, your home size, days of autonomy, and the number of ...

[What size battery for 200 watt solar panel?](#)

In general, a 200 watt solar panel system requires a battery with a capacity of at least 400 watt-hours. This will allow you to store enough energy to power basic appliances and ...



[How Long to Charge a 12V Battery with 200W Solar Panel](#)

Learn how fast a 200W solar panel charges a 12V battery. Explore sizing tips, battery matching, and solar integration for off-grid and commercial systems.



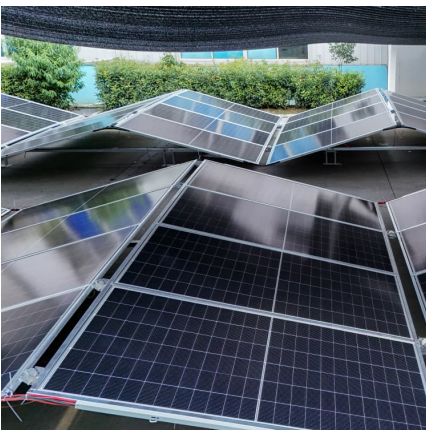
[What size battery for 200 watt solar panel?](#)

In general, a 200 watt solar panel system requires a battery with a capacity of at least 400 watt-hours. This will allow you to store enough energy to power basic appliances and electronics for a few hours each day.



How Many Batteries Do I Need for a 200 Watt Solar Panel?

That is why we are here to give you a breakdown of how many batteries you will need for a 200-watt 12V solar panel, what type of batteries are best, and what other devices you might need ...





[How Many Batteries Do I Need for a 200 Watt Solar ...](#)

For those using a 200-watt solar panel, you first need to answer the question: How many batteries do I need for a 200 watt solar panel? When using a solar panel 200 watt 12 volt, the perfect match of battery you can use ...



[What Size Battery for 200W Solar Panel? \(Explained!\)](#)

And the power output of the solar panels will depend on how many peak sun hours your location receives. Which I'll explain in a moment. Generally, for a 200 watt solar ...

How Many Batteries Do I Need for a 200 Watt Solar Panel?

For those using a 200-watt solar panel, you first need to answer the question: How many batteries do I need for a 200 watt solar panel? When using a solar panel 200 watt ...



Solar Battery Size Calculator: What size battery do I ...

What size solar panel array do you need for your home? And if you're considering battery storage, what size battery bank would be most appropriate? This article includes tables that provide an at-a-glance guide, as ...



[Battery For 200W Solar Panel \(What You Need\)](#)

You can use a single 100ah lithium-ion battery or two 100ah lead-acid batteries wired in parallel with a 200W solar panel. The best battery for a 200W solar panel would be a ...



What Size Solar Battery Do I Need?

In this article, we'll explore the nuances of sizing a solar battery and lay out a process for determining the ideal battery size for your needs. Team up with an Energy Advisor to design a custom solar and battery system for ...

Contact Us

For catalog requests, pricing, or partnerships, please visit:
<https://www.conrad.edu.pl>