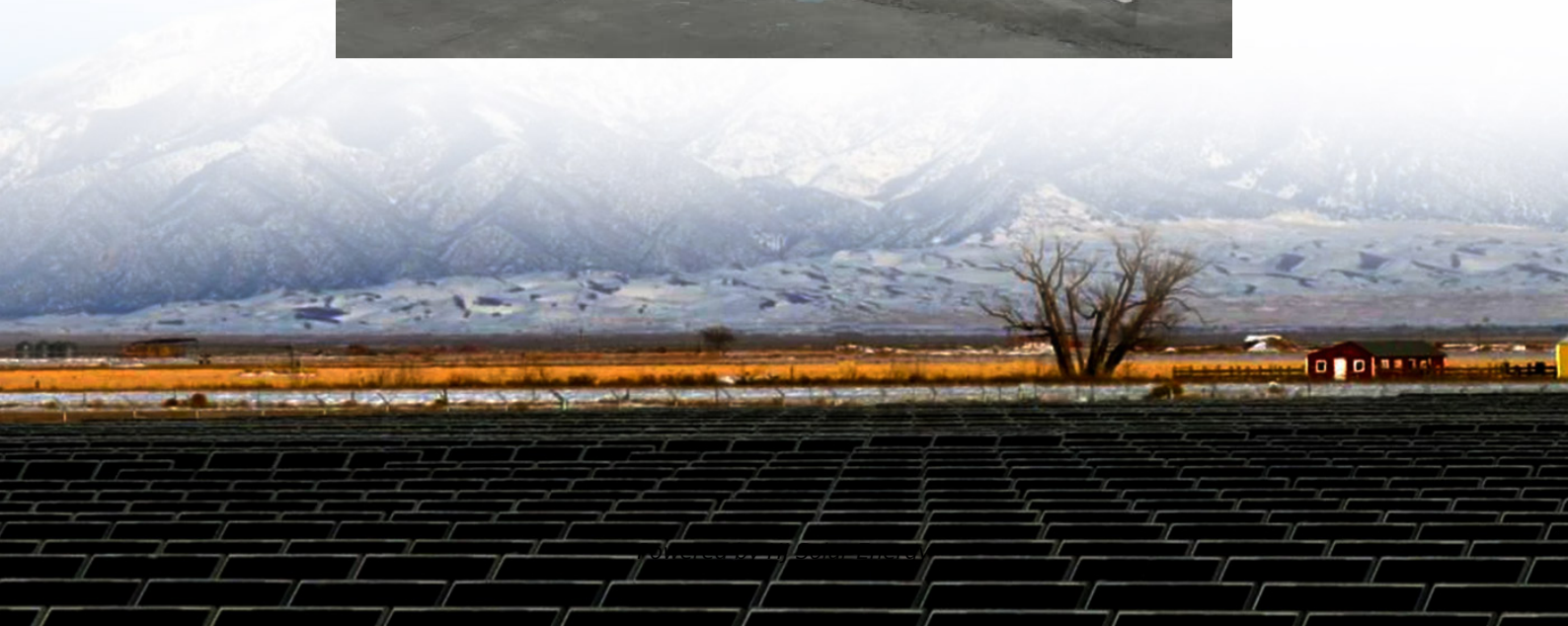


# 2004 toyota solara battery light on dash





## Overview

---

Warning Signal: The battery light illuminates when there's an issue with the charging system. It could indicate a problem with the battery, alternator, starter, wiring, or other components. Immediate Action: If the battery light turns on while you're driving, it's time.

Warning Signal: The battery light illuminates when there's an issue with the charging system. It could indicate a problem with the battery, alternator, starter, wiring, or other components. Immediate Action: If the battery light turns on while you're driving, it's time.

If your Toyota Solara's battery light is on, it is trying to warn you that there is an issue with the charging system. The charging system itself is relatively simple. The battery light comes on because the voltage level at the battery is too low. Breakdown Risk?

Most battery lights will come on.

The dash and outside lights do take about 10 seconds to turn on after the car is started. Starting the car seems to still take too long for what I'd expect. These are symptoms I have noticed, but I am unsure on when they started (or if they're normal), as I really haven't driven it too much in the.

When it comes to your Toyota's dashboard, the battery light is a crucial indicator that demands your attention. This tiny symbol, often shaped like a battery or simply saying "BATT," serves as a messenger for your vehicle's electrical system. Here's what you need to know: Warning Signal: The.

One of the few common issues Toyota owners face is the dreaded battery light turning on. Fortunately, in most cases, this is a simple fix. In this article, I will walk you through the most common causes of the battery light coming on and explain how to address them. Let's get started! What Does the.

The red battery light on the dashboard of your Toyota serves as an important indicator of the vehicle's charging system. It's crucial to understand its meaning and potential implications. - The red battery light does not



necessarily indicate a dead or dying battery. Instead, it signifies a charging.

If the battery indicator in your vehicle comes on when you start the car, that's just a normal system test. If the car battery indicator stays on after a few moments, then there's likely a problem. If you have problems with your battery, you may find that your headlights aren't as bright, the.



## 2004 toyota solara battery light on dash

---



### Understanding the Toyota Battery Light: Signs, Solutions,

Discover the significance of the battery light on your Toyota's dashboard through our comprehensive guide. Learn how addressing this warning promptly can avert breakdowns, ...

### How to fix a red battery light on a Toyota - Baierl Toyota Blog

The red battery light basically means that there is an issue with your alternator, your battery, or some other part of the charging system which could be as minor as cabling or ...



### [How to fix a red battery light on a Toyota - Baierl ...](#)

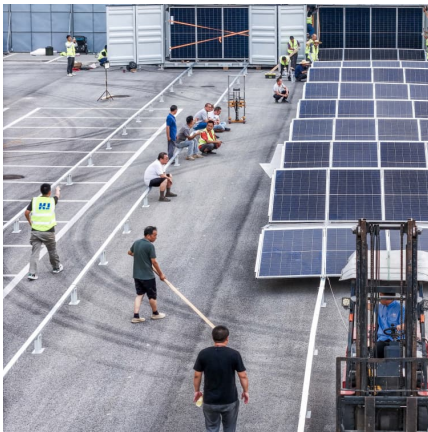
The red battery light basically means that there is an issue with your alternator, your battery, or some other part of the charging system which could be as minor as cabling or as major as a computer malfunction.

### Battery light flickering on dash - Submit Your Question [HERE](#) - ...

The battery light will flicker when your battery drops below a certain voltage. It can drop below a certain voltage if your alternator is getting



worn out or if there is too much slack on the drive ...



### [Toyota Solara Battery Light: Why It's On and How to Fix](#)

If your Toyota Solara's battery light is on, it is trying to warn you that there is an issue with the charging system. The charging system itself is relatively simple. The battery light ...

### **Battery Light**

Today after recleaning connections I started the car and watched the battery light flicker while idling in park. As the battery flickered on and off, the A/C fan and RPMs ramped up ...



### [What does the battery light on my Toyota mean?](#)

When the battery warning light pops up on the dashboard, it's commonly mistaken to be a battery-specific issue. However, the battery warning light typically indicates ...





## [Toyota Battery Light On: The Leading Causes Explained](#)

The battery warning light indicates your Toyota's charging system isn't working properly as it should. This could stem from the alternator not charging the battery effectively, a failing battery, ...



## [What Caused My Toyota Battery Light To Turn On?](#)

If the battery indicator in your vehicle comes on when you start the car, that's just a normal system test. If the car battery indicator stays on after a few moments, then there's likely a problem.

## **Warning lights 2004 Toyota Solara**

In a 2004 Toyota Solara, warning lights on the dashboard indicate issues that require attention. Common warning lights include the check engine light, oil pressure warning, ...



## **Contact Us**

---

For catalog requests, pricing, or partnerships, please visit:  
<https://www.conrad.edu.pl>