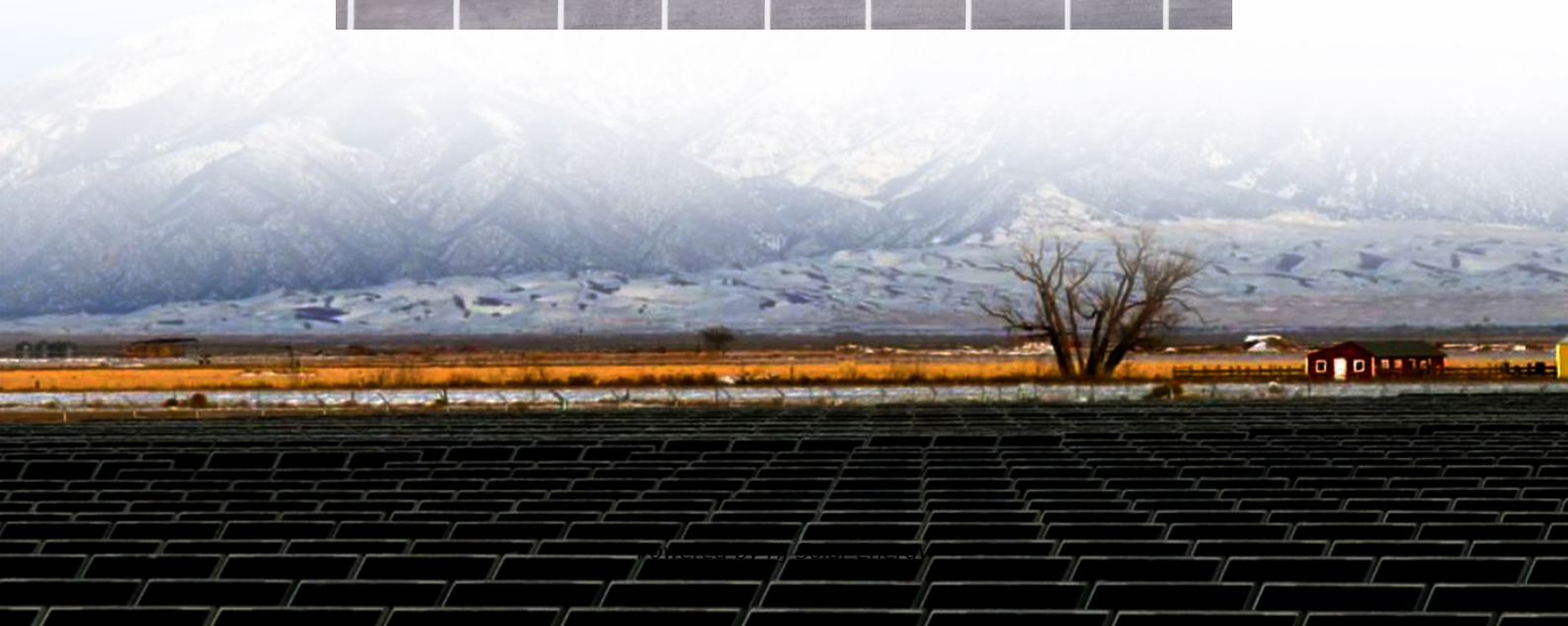
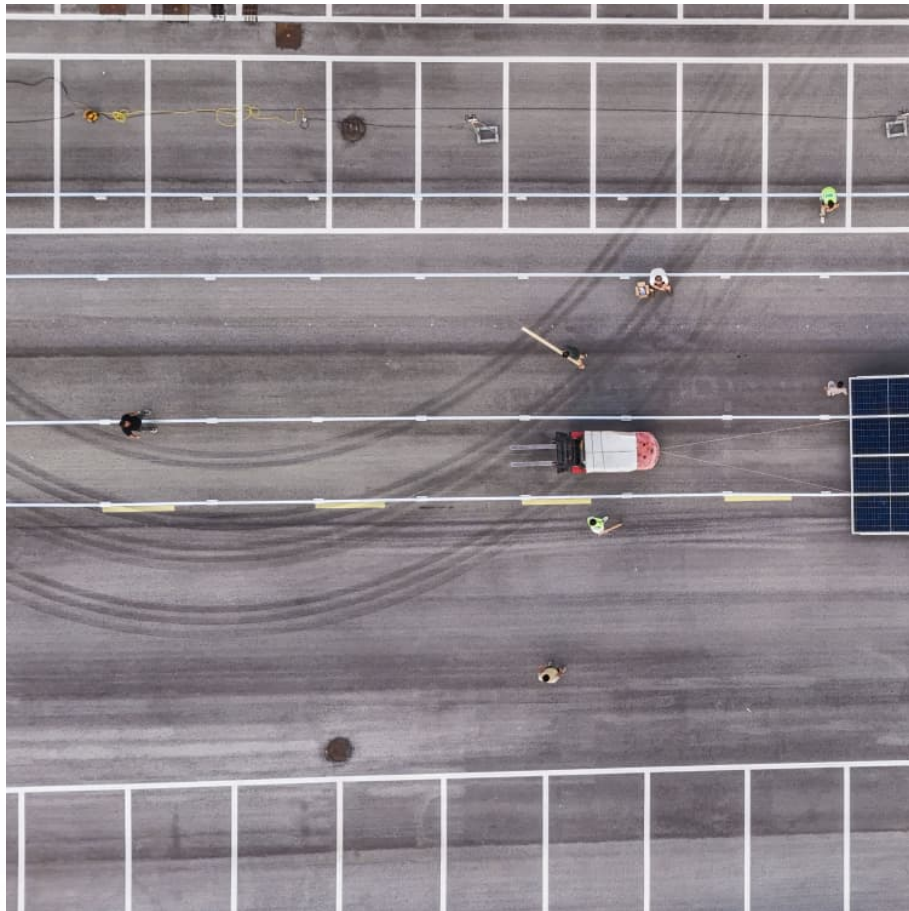


345 kwh solar power





Overview

What is the thermal performance of 345W solar panels?

The thermal performance of the 345W solar panels from Q Cells ensures their reliability and efficiency across varying temperature conditions. These panels are designed to operate optimally within a wide operating temperature range of $-40\sim 85\text{ }^{\circ}\text{C}$.

What is mission Solar 345W solar panel?

Mission Solar 345W Solar Panel is a 60 cell module featuring class leading power output that makes it ideal for both commercial and residential systems, off-grid or grid-tie application. The Passivated Emitter Rear Contact (PERC) technology ensures excellent power output with the help of advanced cell structure.

Are 345W solar panels a good choice?

With a maximum system voltage of 1000 V and a temperature coefficient of $-0.36\text{ } \%/^{\circ}\text{C}$, these solar panels can perform optimally even in challenging weather conditions. The thermal performance of the 345W solar panels from Q Cells ensures their reliability and efficiency across varying temperature conditions.

What is the thermal coefficient of mission Solar 345?

The low thermal coefficient produces greater energy production at high operating temperatures. The module provides a high energy yield at low NOCT = 44.43°C ($\pm 2^{\circ}\text{C}$). Find more information in Mission Solar 345 spec sheet.



345 kwh solar power



X-Series-345-360 - SolarFeeds

The X-Series-345-360 solar panel by SunPower is a cutting-edge and high-performance energy solution designed to deliver exceptional power output and efficiency. With a power range from 345 to 360 watts, this module sets new ...

[Mission Solar 345 Watt Mono 60 Cell All Black](#)

The Mision Solar 345 watt solar panels are made with of PERC (Passivated Emitter Rear Contact) technology. PERC solar cells add a layer of material to the back of the cell, to capture more ...



[Mission Solar 345 Watt Mono Perc Solar Panel ...](#)

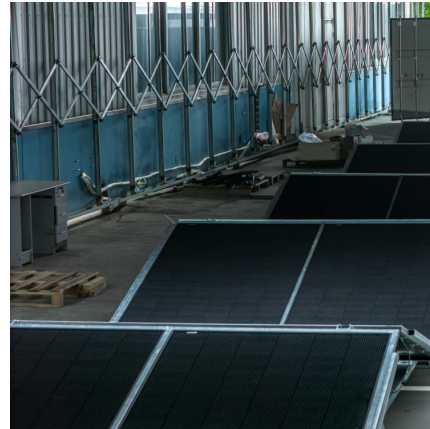
Mission Solar, based in San Antonio, Texas, manufactures a full line of high efficiency N-Type and P-Type solar PV modules that are used for residential, commercial and utility scale applications.

[Mission Solar 345W Solar Panel 60 Cell MSE345SX5T](#)

The Mision Solar 345 watt solar panels are made with of PERC (Passivated Emitter Rear Contact) technology. PERC solar cells add a layer of



material to the back of the cell, to capture more ...



[Mission Solar MSE345SX5T 345W PERC 60 Solar Panel](#)

The MSE345SX5T PERC 60 mono-crystalline solar panel is a 60 cell solar panel with the highest power output in its class. It's high efficiency and certified reliability make it ideal for utility grid ...



SunPower , SPR-X21-335/345 , Solar Panel Datasheet , ENF ...

SunPower Corporation Solar Panel Series SPR-X21-335/345. Detailed profile including pictures, certification details and manufacturer PDF



[Mission Solar 345W Solar Panel 60 Cell MSE345SX5T](#)

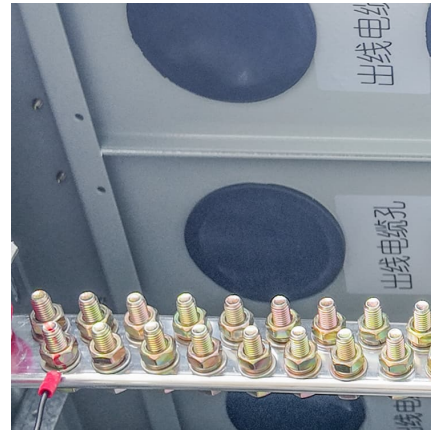
This panel is a 60 cell solar panel featuring a sleek, all-black design coupled with outstanding power output. Its design makes it ideal for residential and commercial rooftop systems.





[345kW Solar Plant Price list and Major Components](#)

Solar Panels are mostly warranted for 25 years (performance warranty) and have a useful life of about 30 years. Panasonic, Trina, Canadian Solar are a few very excellent brands you can opt ...



[Q Cells 345W Solar Panel Specifications](#)

The 345W solar panels are compatible with various solar energy systems, including grid-tied and off-grid setups. Homeowners can also pair these panels with energy storage solutions, such as ...

[Mission Solar MSE345SX5T 345W PERC 60 Solar](#)

...

The MSE345SX5T PERC 60 mono-crystalline solar panel is a 60 cell solar panel with the highest power output in its class. It's high efficiency and certified reliability make it ideal for utility grid-tied installations including ground-mounted and ...



[Mission Solar 345 Watt Mono Perc Solar Panel MSE345SX5T](#)

Mission Solar, based in San Antonio, Texas, manufactures a full line of high efficiency N-Type and P-Type solar PV modules that are used for residential, commercial and utility scale applications.



X-Series-345-360 - SolarFeeds

The X-Series-345-360 solar panel by SunPower is a cutting-edge and high-performance energy solution designed to deliver exceptional power output and efficiency. With a power range from ...



[SunPower X-Series Commercial Solar Panels X21-345-COM](#)

More energy to power your operations. High year-one performance delivers 8-10% more energy per rated watt.³ This advantage increases over time, producing 21% more energy over the first ...

Contact Us

For catalog requests, pricing, or partnerships, please visit:
<https://www.conrad.edu.pl>