

40 watt solar panel battery





Overview

A solar panel can charge any battery provided the panel voltage is equal or higher than the battery. You should also have a charge controller installed to protect the battery from overloading. The largest batter.

Can a 40 watt solar panel charge a 12V battery?

A 40-watt solar panel can charge any size 12v battery but it can only add 16 Amps to the battery bank in a whole day. 12v batteries come in different sizes so with the help of a charge controller you can store the DC power produced by the solar panels in the battery bank to later use Battery size for 40-watt solar panel?

What battery do I need for a 40 watt solar panel?

The 40-watt solar panel can only add 16Ah to the battery bank, so if you're using a Lead-acid or AGM small 12v battery you'll need a 30Ah battery. But, I would recommend a 50Ah battery but for lithium-ion a 20Ah battery will be a best suit.

What is a 40 watt solar panel?

Luminous solar panel 40 Watt 40 watt solar panel is used with solar charge controllers to charge the small battery and run DC loads. It is a small solar panel with height of 3.3 feet and width 2.3 feet. During the day when sunlight is available, it converts 5 amp current into useable electricity.

How long does a 40 watt solar panel take to charge?

A 40 watt solar panel can charge a 12V 50ah battery in 3 days. A partially discharged battery can be recharged in even less time with 5 hours of sun available. How Long Does It Take a 40W Solar Panel to Charge a 12V Battery?

To get the most accurate estimate, you have to account for the battery size and how many hours of sunlight are available.



What type of battery does a Coleman 40W solar panel use?

The Coleman 40W Crystalline Solar Panel is the ideal choice for generating power in remote locations or as part of a back-up power system. What type of batteries does this solar panel maintain?

All rechargeable 12V batteries. How do I know if the panel is producing voltage?

How long does it take to charge a 12-Volt battery?

.

How much power does A 40W solar panel use?

During this conversion, there will be some power loss of about 15-5% (depending on the inverter efficiency rate) so most of the inverters are about 85-90% efficient So if you're running an AC load directly from your 40W solar panel then your output load should not exceed 27 watts ($32 * 0.85 = 27$ Watts).



40 watt solar panel battery

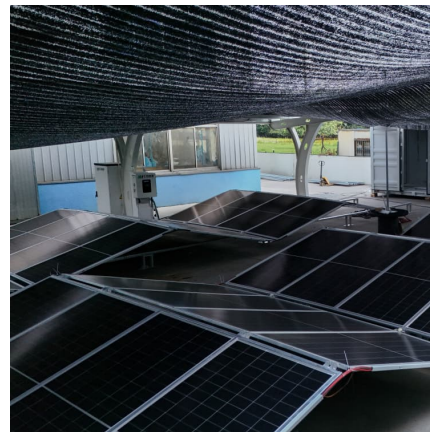


[Will a 40 Watt Solar Panel Charge a Battery?](#)

It depends on portability and the weight you are willing to carry. If you have a camper with enough space, you can bring several solar panels and a large battery pack. If you ...

[40 Watt, 12-Volt Crystalline Solar Panel](#)

40 Watt, 12-Volt Crystalline Solar Panel The Coleman 40W Crystalline Solar Panel is the ideal choice for generating power in remote locations or as part of a back-up power system.



[Nature Power 40-Watt Portable Monocrystalline ...](#)

This Nature Power 40W Portable Monocrystalline Silicon Solar Panel for 12V Charging is a powerful, portable solar charger in a sleek briefcase design that is ideal for charging and maintains 12-volt batteries.

40 Watt Solar Panel: Everything You Need To Know - Dot Watts®

Battery size for 40-watt solar panel? The 40-watt solar panel can only add 16Ah to the battery bank, so if you're using a Lead-acid or AGM small



12v battery you'll need a 30Ah ...



SWPB-40

SunWize SWPB-40 Solar Module The SWPB-40 is a 40 watt (40W) solar module. This module is an excellent choice for all smaller off-grid solar power applications. For instance, it has impact ...

SWPB-40

SunWize SWPB-40 Solar Module The SWPB-40 is a 40 watt (40W) solar module. This module is an excellent choice for all smaller off-grid solar power applications. For instance, it has impact resistant glass and is designed for demanding ...



How many A batteries are suitable for a 40W solar panel?

In essence, determining the appropriate number of A batteries suitable for a 40W solar panel involves thorough calculations linked to energy consumption, calculating battery ...



Will 40 Watt Solar Panel Charge A 12 Volt Battery?

Assuming a 12V operating voltage, a typical battery size for a 40-watt solar panel would be a 12V 35Ah deep cycle battery. This battery size should provide ample energy storage capacity for ...

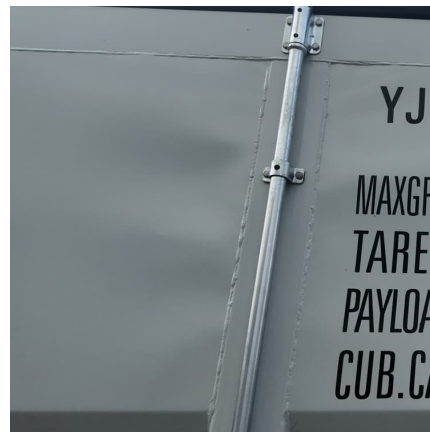


Amazon : 40 Watt Solar Panels

SunJack - 40 Watt Foldable Solar Panel, ETFE Waterproof Portable Solar Panel with Kickstands, USB-C PD30W, USB-A QC3.0, DC Output, Solar Panels for Camping, Hiking, Emergency Power

Nature Power 40-Watt Portable Monocrystalline Silicon Solar Panel ...

This Nature Power 40W Portable Monocrystalline Silicon Solar Panel for 12V Charging is a powerful, portable solar charger in a sleek briefcase design that is ideal for charging and ...



Will a 40 Watt Solar Panel Charge a 12V Battery?

So while PV modules continue to increase in output, portable 40 watt solar panels remain appealing for people who do not need a lot of power. If you have reasonable expectations, this ...



Contact Us

For catalog requests, pricing, or partnerships, please visit:
<https://www.conrad.edu.pl>