

5 8 kw solar battery





Overview

Perfect for residential and small commercial installations, this lithium iron phosphate battery enables efficient storage of excess solar energy, reducing grid dependency and enhancing overall system performance. Its modular design allows for effortless expansion, adapting to evolving energy needs. How many solar batteries in 7.5 kW solar system?

In 7.5 kW solar system, you will get 10 solar battery of 150 Ah capacity. Want to read more about: Solar Battery. Is there any discount on this solar system?

Yes, you will get special discount for bulk quantity orders. For more information, contact us. Are solar batteries also included in this system?

.

Can a 5 kWh battery be used as solar energy?

You can pair your 5 kWh battery with solar panels (using a charge controller) and store solar energy every sunny day for later use. By using stored solar energy to power some of your power-hungry appliances, you'd save money by consuming less energy from the grid.

Which solar battery is best for a 5kW system?

Due to the popularity of system sizes around 5kW and 6.6kW, some of the best solar batteries are geared to serve systems of this size. The LG Chem and Tesla Powerwall II batteries are both suitable options for a 5kW system. We explain how you can select the right size solar battery for your needs.

What are 8 kW solar kits?

8 kW solar kits are complete PV solar power systems that include solar panels, Enphase micro-inverters, 24/7 monitoring, rack mounting system, hardware, cabling, permit plans, and instructions. These grid-connected solar kits can work for a home or business, with just about everything you need to get the system up and running quickly.



What is a Solax Triple Power Battery?

Solax triple power, 5.8kWh master battery, which incorporates state of the art technology and offers convenient control features. This high voltage battery solution can be installed in series with up to three slave units (three phase only), enabling up to 23kWh of storage capacity. For single phase systems, only one or two slaves can be added.



5 8 kw solar battery

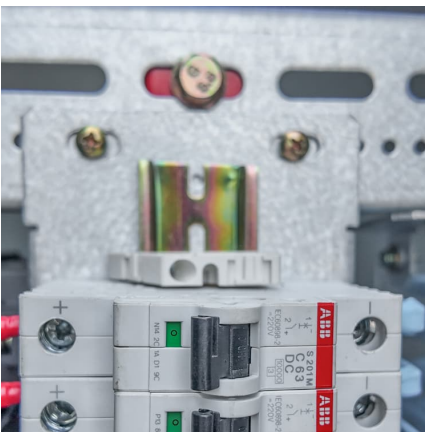


[Triple Power Battery for Solar System , SolaX Power](#)

High Efficiency SolaX triple power batteries offer scalable energy storage, ranging from 2.5kWh to 92.1kWh, ensuring long-term solar energy retention. This helps reduce reliance on the grid, maximize self-consumption, and optimize ...

[Solax Triple Power 5.8kW Solar Master Battery](#)

Solax triple power, 5.8kWh master battery, which incorporates state of the art technology and offers convenient control features. This high voltage battery solution can be installed in series ...



SolaX Triple Power 5.8kWh Battery

With a 10-year warranty and 90% depth of discharge, the new Triple Power battery is a flexible, practical, high-performance energy storage solution. In order to scale the system and have it operating effectively a Master console with ...

SOLAX 5.8kW Master

The T58 Lithium-Ion battery module is designed for high efficiency and reliability, making it an excellent choice for residential and light commercial energy storage applications.



[228Ah , 5.8kWh , LIFEPO4 Power Block](#)

BigBattery's 24V 5.8 kWh LiFePO4 HAWK Max 2 battery takes all the great features you loved from our HAWK Max and adds even more capacity and 2nd generation upgrades.



[Solax TriplePower 5.8kWh LFP Battery \(Master\)](#)

Perfect for residential and small commercial installations, this lithium iron phosphate battery enables efficient storage of excess solar energy, reducing ...



[SolaX Triple power 5.8 kWh Master Battery](#)

SolaX's Triple Power Battery is a 5.8kWh modular unit. Capable of 90% depth of discharge. Lithium ion Phosphate composition is known for its exceptional safety features, with a high ...





Solax TriplePower 5.8kWh LFP Battery (Master)

Perfect for residential and small commercial installations, this lithium iron phosphate battery enables efficient storage of excess solar energy, reducing grid dependency and enhancing ...



CROWN 5.8 KW - New World Battery

Description The Crown Arceus 5.8KW Hybrid Solar Inverter is a reliable and efficient energy solution, ideal for enhancing the performance and reliability of your solar power system s ...

SolaX Triple power 5.8 kWh Master Battery

SolaX's Triple Power Battery is a 5.8kWh modular unit. Capable of 90% depth of discharge. Lithium ion Phosphate composition is known for its exceptional safety features, with a high depth of discharge (DOD) of up ...



SolaX T-BAT-SYS-HV-5.8 , LiFePO4 Battery For Solar System

The T-BAT-SYS-HV-5.8 LiFePO4 solar battery offers 90% DOD, 6000+ cycle life, and IP65 protection. Ideal for floor or wall mounting, it ensures reduced self-consumption, quick ...



[Triple Power Battery for Solar System , Solax Power](#)

High Efficiency Solax triple power batteries offer scalable energy storage, ranging from 2.5kWh to 92.1kWh, ensuring long-term solar energy retention. This helps reduce reliance on the grid, ...



Solax Triple Power 5.8kWh Battery

With a 10-year warranty and 90% depth of discharge, the new Triple Power battery is a flexible, practical, high-performance energy storage solution. In order to scale the system and have it ...



[Solax Triple Power 5.8kW Solar Master Battery](#)

Solax triple power, 5.8kWh master battery, which incorporates state of the art technology and offers convenient control features. This high voltage battery ...





[Triple Power Solar Battery 5.8kWh SLAVE LFP Battery](#)

The new Triple Power encompasses the very latest in LFP technology which ensures much safer installations with wider temperature tolerances. With a 10-year warranty and 90% depth of discharge, the new Triple Power battery is a ...

[Triple Power Solar Battery 5.8kWh SLAVE LFP Battery](#)

The new Triple Power encompasses the very latest in LFP technology which ensures much safer installations with wider temperature tolerances. With a 10-year warranty and 90% depth of ...



[SolaX T-BAT-SYS-HV-5.8 , LiFePO4 Battery For ...](#)

The T-BAT-SYS-HV-5.8 LiFePO4 solar battery offers 90% DOD, 6000+ cycle life, and IP65 protection. Ideal for floor or wall mounting, it ensures reduced self-consumption, quick installation, and eco-friendliness with no toxic materials.

Contact Us

For catalog requests, pricing, or partnerships, please visit:
<https://www.conrad.edu.pl>