

Aegis solo battery door replacement





Overview

How do you open a geek vape aegis solo battery?

Part of why the Geek Vape Aegis solo does such a good job of withstanding shocks is because it has a threaded battery compartment that keeps water out and won't pop open accidentally. To open the battery compartment, lift the handle of the compartment lid and use it for leverage as you turn the lid counterclockwise.

Can I charge the aegis solo with a mobile phone?

Don't charge the Aegis Solo with a mobile phone or tablet charger. Make sure that the battery is secure and installed with the correct orientation. The battery's positive pole should face the top of the mod.

Why is my Geek vape aegis solo not working?

Replace the battery if none of the above solutions work. If nothing happens when you attempt to use the Geek Vape Aegis Solo, it's likely that the battery is dead or that the device is locked. To unlock the device, press the fire button five times quickly. If the device still doesn't work, try charging the battery.

Does the Geek vape aegis solo withstand shocks?

This is your quick-start Geek Vape Aegis Solo instruction manual. Part of why the Geek Vape Aegis solo does such a good job of withstanding shocks is because it has a threaded battery compartment that keeps water out and won't pop open accidentally.

What should I do if my aegis solo won't charge?

Try a different USB cable. Although the Aegis Solo can take a great deal of abuse, USB cables wear out quickly when they're used every day. Try a different computer or a different USB port on the same computer. Don't charge the Aegis Solo with a mobile phone or tablet charger.



How to change wattage on Geek vape aegis solo?

If the device is in wattage mode, you can adjust the power by pressing the plus and minus buttons on the front of the device. To change vaping modes, press the fire button three times quickly to open the menu. The reason why the Geek Vape Aegis Solo is such a popular vape mod is its reliability.



Aegis solo battery door replacement



[AEGIS Legend Replacing Battery Door Latch](#)

About Press Copyright Contact us Creators
Advertise Developers Terms Privacy Policy &
Safety How works Test new features NFL Sunday
Ticket © 2025 Google LLC

[I just purchased an Aegis GeekVape Legend but I ...](#)

They worked on it a bit, and wound up with a door who's latch is kind of a PITA. It's got a long slide and needs to be completely closed before it will move.



Geek Vape Aegis Solo User Manual & Troubleshooting Guide

To open the battery compartment, lift the handle of the compartment lid and use it for leverage as you turn the lid counterclockwise. Insert the battery with the positive pole facing the top of the ...

[Vape Parts & Accessories - Tagged "Parts"](#)

Geekvape E100 510 Adapter is designed for Geekvape E100 (Aegis Eteno) Kit / Geekvape E100i Kit 3000mAh to be compatible with 510 tanks. Kindly note that the pictures are for



reference



GeekVape Aegis Solo

I've been using my GeekVape Aegis Solo for about 2 years, no problems. But suddenly the screw-on battery door became very difficult to screw on properly when there's a ...



Geek Vape Aegis Solo User Manual & Troubleshooting Guide

You could try shocking the battery door with a rubber mallet, as it shouldn't damage anything and it may allow you to pop it open then. But it's something that you would ...



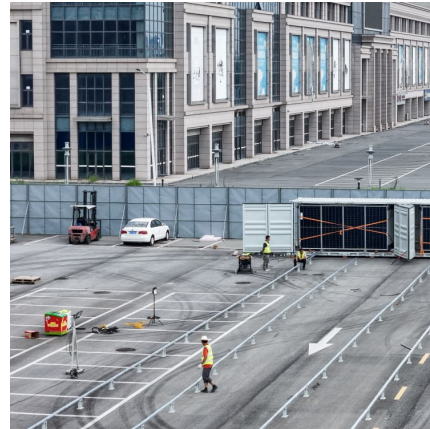
Know Issue Regarding The Geek Vape Aegis Solo 100W Box Kit

Hello everyone I was looking for some help regarding my Aegis Solo Mod. I have owned it for 6-8 months and just recently I started having an issue with the battery cap not screwing into place ...

Aegis Solo Battery Cover Issue



I've had this wonderful GeekVape Aegis Solo for just over 3 months now. I've been very happy with it but the screw-in battery cover is not working correctly now.



New vape//battery door stuck??

You could try shocking the battery door with a rubber mallet, as it shouldn't damage anything and it may allow you to pop it open then. But it's something that you would ...

[GeekVape Aegis Legend 200W Broken Battery Door Inlet](#)

However, literally the first time it drops - from about maybe 2 feet - the part of the main body frame where the battery door latches onto broke off .I'm so sad and disappointed ... more



I just purchased an Aegis GeekVape Legend but I don't know ...

They worked on it a bit, and wound up with a door who's latch is kind of a PITA. It's got a long slide and needs to be completely closed before it will move.



Know Issue Regarding The Geek Vape Aegis Solo 100W Box Kit

Hello everyone I was looking for some help regarding my Aegis Solo Mod. I have owned it for 6-8 months and just recently I started having an issue with the battery cap ...



Contact Us

For catalog requests, pricing, or partnerships, please visit:
<https://www.conrad.edu.pl>