

# **Aegis solo low battery protection fix**





## Overview

---

Why is my Geek vape aegis solo not working?

Replace the battery if none of the above solutions work. If nothing happens when you attempt to use the Geek Vape Aegis Solo, it's likely that the battery is dead or that the device is locked. To unlock the device, press the fire button five times quickly. If the device still doesn't work, try charging the battery.

How do I unlock the Geek vape aegis solo?

To unlock the device, press the fire button five times quickly. If the device still doesn't work, try charging the battery. The Geek Vape Aegis Solo won't operate if it doesn't have a solid electrical connection from the battery to the atomizer coil.

Can I charge the aegis solo with a mobile phone?

Don't charge the Aegis Solo with a mobile phone or tablet charger. Make sure that the battery is secure and installed with the correct orientation. The battery's positive pole should face the top of the mod.

Does the Geek vape aegis solo withstand shocks?

This is your quick-start Geek Vape Aegis Solo instruction manual. Part of why the Geek Vape Aegis solo does such a good job of withstanding shocks is because it has a threaded battery compartment that keeps water out and won't pop open accidentally.

What should I do if my aegis solo won't charge?

Try a different USB cable. Although the Aegis Solo can take a great deal of abuse, USB cables wear out quickly when they're used every day. Try a different computer or a different USB port on the same computer. Don't charge the Aegis Solo with a mobile phone or tablet charger.

How to change wattage on Geek vape aegis solo?



If the device is in wattage mode, you can adjust the power by pressing the plus and minus buttons on the front of the device. To change vaping modes, press the fire button three times quickly to open the menu. The reason why the Geek Vape Aegis Solo is such a popular vape mod is its reliability.



## Aegis solo low battery protection fix

---



[How to fix Aegis legend vape stuck on battery low ...](#)

Here's how to disassemble and dry the aegis legend. if you get water on the circuit boards, in my case from rinsing it in the sink, 1 battery may show full and

[Fix The Geek Vape Aegis Solo Issues by Yourself](#)

Nothing happens when you try to use the Geek Vape Aegis Solo, which means the battery is dead or the device is locked. To unlock the Geek Vape Device, press the fire ...



**Aegis legend battery low protection :  
r/electronic\_cigarette**

I'm on my second Aegis Legend right now for this exact reason. Despite it being water resistant, I suspect some juice made its way into my device (RDA, drip and go) and got inside and ...



### **Part 1 Aegis Legend FIXED Battery Low Protection, Turning Off**

This is an Easy DIY fix using simple tools you commonly see, cost efficient, no need for replacements, no need for spare, no need for



technicians. Only requires positivity and ...



### How to fix Aegis legend vape stuck on battery low protection

Here's how to disassemble and dry the aegis legend. if you get water on the circuit boards, in my case from rinsing it in the sink, 1 battery may show full and



### how to get past the battery protection on the aegis legend vape

In bypass mode, the Aegis Hero automatically sends the battery's full available voltage to the atomizer coil. To switch between modes, press the fire button three times quickly to open the ...



### Part 1 Aegis Legend FIXED Battery Low Protection, Turning Off

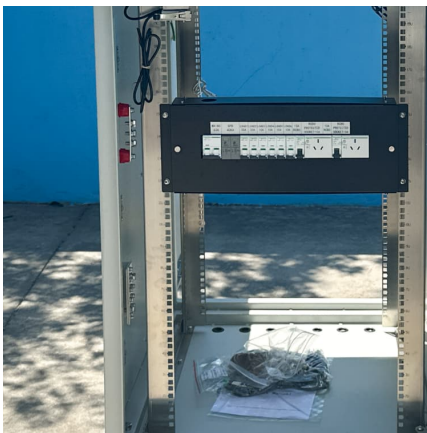
This is an Easy DIY fix using simple tools you commonly see, cost efficient, no need for replacements, no need for spare, no need for technicians. Only requires positivity and patience. ... more





### **Aegis drops the wattage when the battery is half way or less**

If you can try the higher rated battery that might work, but in the meantime, either adjust your vape and/or vape on two battery mods if you wish to vape at that wattage.



### **Geek Vape Aegis Solo User Manual & Troubleshooting Guide**

Try giving the battery contacts inside the mod a clean using a rubber tipped pencil. Clean off the contacts in the battery door and make sure the (balanced charging?) sprung pin is clean and dry.

### **geekvape Aegis solo problems**

Once it said the battery was low, but I'd just put a fully charged one in about half an hour before. Anyone else with this mod had these problems and know how to sort it out?



### [GeekVape Aegis Legend Low Battery Protection](#)

So I periodically get "battery low protection" on my mod showing the left battery completely out when the batteries are charged. I've tried taking ...



### **Aegis legend battery low protection : r/electronic\_cigarette**

I'm on my second Aegis Legend right now for this exact reason. Despite it being water resistant, I suspect some juice made its way into my device (RDA, drip and go) and got ...



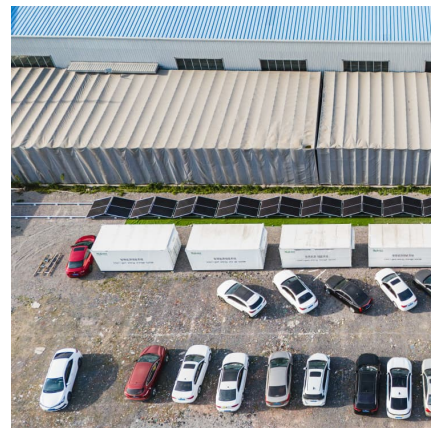
### **Aegis Solo Battery Cover Issue**

I've had this wonderful GeekVape Aegis Solo for just over 3 months now. I've been very happy with it but the screw-in battery cover is not working correctly now.



### [GeekVape Aegis Legend only reading one Battery](#)

Try giving the battery contacts inside the mod a clean using a rubber tipped pencil. Clean off the contacts in the battery door and make sure the (balanced charging?) ...





### [GeekVape Aegis Legend Low Battery Protection](#)

So I periodically get "battery low protection" on my mod showing the left battery completely out when the batteries are charged. I've tried taking it apart, cleaning the board with a toothbrush ...

### **Geek Vape Aegis Solo User Manual & Troubleshooting Guide**

If nothing happens when you attempt to use the Geek Vape Aegis Solo, it's likely that the battery is dead or that the device is locked. To unlock the device, press the fire button five times quickly.



## **Contact Us**

---

For catalog requests, pricing, or partnerships, please visit:  
<https://www.conrad.edu.pl>