

Agm solar battery controller





Overview

What voltage should AGM batteries be plugged into?

When it comes to AGM batteries, which can be part of a 12V, 24V, or 48V system, the settings are as follows: The maximum charge current should not exceed 50A for each 100Ah of battery capacity. Set the absorption voltage at 14.60 volts and the float voltage at 13.50 volts.

Does a solar panel charge controller work with a 12V battery?

It has zero power consumption when there is no sunlight. [Compatibility] This solar panel charge controller is designed for 12V solar panels with a maximum current of 8A, and 12V rechargeable batteries. It works with 12V batteries such as LiFePO₄, AGM, GEL, and more. [Easy to Use] This controller has a handy SAE connector that plugs in easily.

What are the different types of solar charge controllers?

MPPT controller – This stands for maximum power point tracking controller.

PWM controller – This means pulse width modulation controller. Before setting up your solar charge controller, you should learn how it works. Here's what to remember when installing and adjusting your solar charge controller:.

Can AGM batteries be overcharged?

All those settings can be tailored. Overcharging AGM batteries should only be done in accordance with manufacturer's recommendation in most cases.

Overcharging AGM usually has a negative outcome. According to these resources: These appear to be classified as UPS batteries given the website URL at the bottom of the datasheet.

How much power does a solar charge controller use?

This capacity typically dictates the rating of your solar charge controller and ranges from 10A up to 100A. Knowing how to configure the solar charger controller settings according to your specific solar battery type for an effective



solar energy system can significantly enhance the charging efficiency.

How to set up a solar charge controller?

While you set up your new solar charge controller, you should begin with properly wiring the controller to the battery bank and solar panels properly. Once the wiring is properly done and the controller detects the power, its screen will light up. Other steps are as follows: 1. Enter the settings menu by holding the menu button for a few seconds.



Agm solar battery controller



[Setting my Charge controller for AGM Batteries](#)

I was recently given 3 Marathon M12V155FT batteries that are agm. I set out to change the battery type on my charge controller and discovered there is no AGM option on my ...

Best Settings For Charge Controller

This type of battery does not generally perform well in a cyclic application. Can you return them? Whatever the case, the charge parameters you provided seem reasonable ...



[Solar Charge Controller Settings Guide](#)

Always refer to the AGM battery manufacturer's recommendations, as these settings can vary based on the specific battery design and capacity. Making the right adjustments ensures the ...

Solar charge controller for AGM battery:Advanced Solar Charge

Learn how solar charge controllers protect your batteries from overcharging and discharging, ensuring optimal performance and extending the



lifespan of your solar power system for ...



[\[Explained\] Solar Charge Controller Settings For AGM...](#)

Setting solar charge controller settings for AGM batteries is crucial. Learn how to adjust maximum current, absorption voltage, float voltage, equalization voltage, and bulk voltage offset for optimal battery performance.



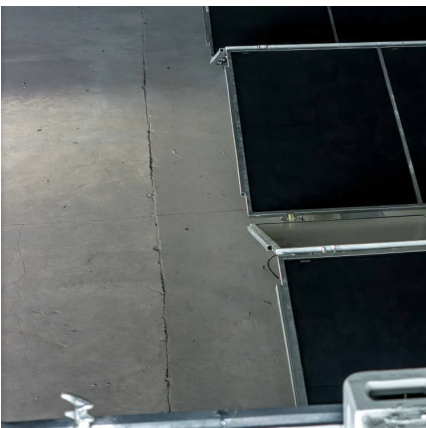
Optimizing Solar Charge Controller Settings for AGM Batteries: A ...

AGM (Absorbent Glass Mat) batteries aren't your grandpa's lead-acid cells. These sealed wonders require precise solar charge controller settings - get it wrong, and ...



Best Settings For Charge Controller

This type of battery does not generally perform well in a cyclic application. Can you return them? Whatever the case, the charge parameters you provided seem reasonable for an AGM battery. IMHO, you should avoid ...





Solar Charge Controller Settings 101: All You Need to Know

To get the best out of your AGM battery, it's essential to adjust your solar charge controller settings following the manufacturer's recommendations. The controller settings will ...



[Solar Charge Controller Settings Guide](#)

Always refer to the AGM battery manufacturer's recommendations, as these settings can vary based on the specific battery design and capacity. Making the right adjustments ensures the longevity and efficiency of your solar power ...

[Explained] Solar Charge Controller Settings For AGM Battery

Setting solar charge controller settings for AGM batteries is crucial. Learn how to adjust maximum current, absorption voltage, float voltage, equalization voltage, and bulk ...



Solar Charge Controller Settings

Install the controller on a well-ventilated and flat surface. While running, the controller will be heated. This controller is suitable for lithium batteries. All kinds of lead ...



Solar Charge Controller Settings

To get the best out of your AGM battery, it's essential to adjust your solar charge controller settings following the manufacturer's recommendations. The controller settings will ...



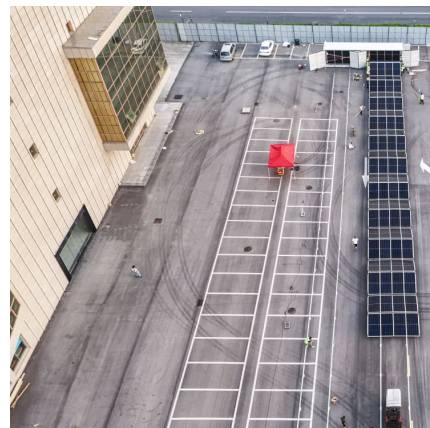
SOLPERK 8A 12V Solar Charge Controller with LED Display, ...

[Compatibility] This solar panel charge controller is designed for 12V solar panels with a maximum current of 8A, and 12V rechargeable batteries. It works with 12V batteries ...



[SOLPERK 8A 12V Solar Charge Controller with LED ...](#)

[Compatibility] This solar panel charge controller is designed for 12V solar panels with a maximum current of 8A, and 12V rechargeable batteries. It works with 12V batteries such as LiFePO?, AGM, GEL, and more.





[Proper charge controll settings for 12V AGM](#)

I've got a MT50 controller hooked up to a Solar Epic Tracer 4215BN charge controller that is putting power into a 12V AGM. I'm currently using the suggested settings for a ...

Contact Us

For catalog requests, pricing, or partnerships, please visit:
<https://www.conrad.edu.pl>