

Aps kwh for kw solar





Overview

How much does APS charge for solar energy?

This is lower than what APS charges for electricity, which is about \$0.15 per kWh. Because the RCP rate is lower than the retail rate of electricity, excess solar energy cannot fully cover the full costs of energy you take from APS in the future, lowering overall solar savings.

How do I choose a APS Solar Plan?

The APS Solar Rate Plans define Winter as November through April and Summer as May through October. Usage charges are higher in the Summer. Choosing the right plan after going solar depends on what APS Plan you had before solar and your habits of using energy in your home. For more information on this topic, see our page on APS Plans Before Solar.

Will I get an APS bill if I install solar panels?

Yes, you will still get an APS bill if you install solar panels. APS credits excess energy at a rate lower than the retail rate, which means it will not fully cover the costs of future energy usage. There many also be fees and chargers that cannot be offset by solar.

What is the difference between APs and fixed energy charge?

Many customers are on the Fixed Energy Charge Plan before going solar, which is an APS Plan that has a flat usage charge at all times. After solar, there are two plans to choose from, and they are both Time-of-Use plans. On these plans, usage charges are different depending on the time of day and day of the week.

How long does APS take to install solar?

APS requires solar homeowners to use Time of Use rates, which results in slightly lower solar savings. The solar interconnection process takes anywhere from one to four weeks with APS. Does Arizona Public Service offer net



metering?

Unfortunately, APS does not offer a net metering program.

When is APS Solar off-peak?

If they fall on a Sunday, the following Monday will be off-peak. Christmas Eve and New Year's Eve are off-peak holidays as well but only when they fall on a weekday. The APS Solar Rate Plans define Winter as November through April and Summer as May through October. Usage charges are higher in the Summer.



Aps kwh for kw solar



[APS Is Slashing Solar Buyback Rates on September ...](#)

Lock in the current solar buyback rate before APS drops it by 10% on September 1st! Schedule your free consultation today to get started before it's too late.

[Arizona Public Service Solar: How Good Is It?](#)

APS offers a net billing program with an RCP rate of about \$0.076 per kWh for excess solar energy. TOU plans vary rates by time of day, encouraging off-peak energy use for ...



APS Solar Rate Plans

The APS Solar Plan you choose will affect the amount of savings you enjoy after going solar. Unfortunately, choosing your APS Solar Plan can be a complicated and frustrating process. ...

THE TRUE COST OF APS ENERGY

How much electricity you use in a given month is calculated in kilowatt-hours (kWh). This number may change significantly from season to season based on your consumption habits - many ...



Rates, Schedules and Adjustors

Rates, Schedules and Adjustors From renewable energy plans to the terms and conditions of specific service schedules and detailed rate information, we've compiled information in a ...

APS SolarSmart

For best results, enter your total energy (kWh) values for the most recent 12 months. Planning any energy efficiency improvements in the next 12 months? The associated costs and energy ...



APS Solar Rate Plans

The APS Solar Plan you choose will affect the amount of savings you enjoy after going solar. Unfortunately, choosing your APS Solar Plan can be a complicated and frustrating process. But, ...





[APS Solar Program Rate Plan Overview , Solar Topps](#)

APS Solar Plan Comparison APS Seasonal Rate Comparison Understanding Demand Charges for Arizona Homes These charges represent the cumulative amount of energy (kW) a home consumes at any given moment, ...



APS

our of energy use during on-peak hours, measured in kilowatts or kW), multiplied by a charge per kilowatt. The charge per kilowatt varies by season. For example in summer the demand charge ...

[A guide to going solar with Arizona Public Service \(APS\)](#)

For best results, enter your total energy (kWh) values for the most recent 12 months. Planning any energy efficiency improvements in the next 12 months? The associated costs and energy ...



[A guide to going solar with Arizona Public Service \(APS\)](#)

Key takeaways APS credits excess solar energy at \$0.076 per kWh, which is lower than the retail rate of electricity. APS requires solar homeowners to use Time of Use rates, which results in ...



[APS Solar Program Rate Plan Overview , Solar Topps](#)

APS Solar Plan Comparison APS Seasonal Rate Comparison Understanding Demand Charges for Arizona Homes These charges represent the cumulative amount of ...

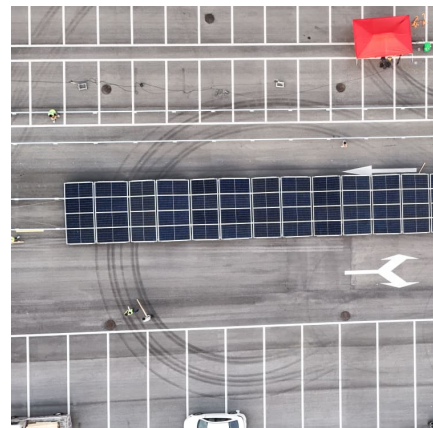


[Arizona Public Service Solar: How Good Is It?](#)

APS offers a net billing program with an RCP rate of about \$0.076 per kWh for excess solar energy. TOU plans vary rates by time of day, encouraging off-peak energy use for savings. Federal and state tax credits can ...

[APS Is Slashing Solar Buyback Rates on September First](#)

Lock in the current solar buyback rate before APS drops it by 10% on September 1st! Schedule your free consultation today to get started before it's too late.





[A Guide to Going Solar with Arizona Public Service \(APS\)](#)

APS uses a billing structure called the Resource Comparison Proxy (RCP) to determine the value of any excess electricity your solar panels export to the grid. As of 2025, ...

Contact Us

For catalog requests, pricing, or partnerships, please visit:
<https://www.conrad.edu.pl>