

Arizer solo battery fail





Overview

How long does the arizer solo battery take to charge?

The battery will take 3-4 hours to fully charge, or longer if you use it while charging. If your battery is running low, with the Arizer Solo you don't have to wait for the battery to charge before you can use it. Just plug it in, set the temperature, and use the Solo while the battery continues charging.

Can I tamper with the arizer Solo II battery?

Do not tamper with or misuse the Arizer Solo II Battery, and do not use damaged/defective batteries or Solo II devices. Arizer Solo II should be stored in a safe, temperature controlled, cool, dry place. Do not store in extreme temperature environments. Extreme heat or cold can damage the device and/or battery.

How should arizer Solo II be stored?

Arizer Solo II should be stored in a safe, temperature controlled, cool, dry place. Do not store in extreme temperature environments. Extreme heat or cold can damage the device and/or battery. Do not store your Solo II with a fully charged or fully drained battery for extended periods of time (one month or longer).

How long do arizer batteries last?

Arizer Batteries meet rigorous quality standards. With normal use they will last for hundreds of charge cycles before losing any capacity. Dropping the battery or the unit can result in battery damage that may limit / reduce the battery capacity quickly, so it is important to handle your unit carefully.

How do I conserve the battery life of the arizer solo?

To conserve battery life, use the Arizer Solo in a temperature controlled environment and use the lower temperature settings. When outdoors, stay sheltered from the elements and avoid using in extremely cold temperatures.



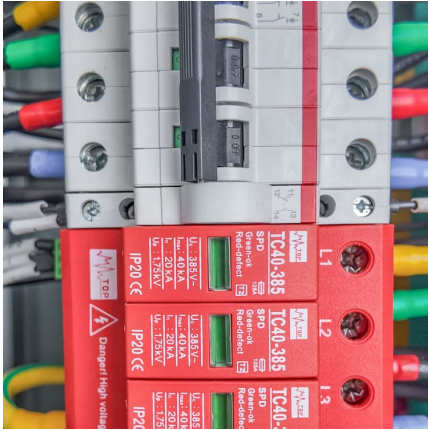
Charge the battery as necessary.

What are arizer Solo II batteries & chargers?

Arizer Solo II Batteries and Chargers are manufactured to strict quality standards, specifically for use with the Solo II. Only use official Solo II Batteries & Chargers. Do not use any third-party, counterfeit, or unknown brand batteries or chargers.



Arizer solo battery fail



Arizer

If your Arizer portable vaporizer is hitting harsh or scorching your herbs, don't worry! Here's a guide to help you adjust your settings and technique for a smoother, enjoyable experience.

My Arizer is giving me error codes

Error 4 generally indicates an issue with the battery. For example, a defective battery, the wrong battery, an upside-down battery, or plastic covering the connection, etc.



[Arizer Solo Issue \(Battery?\) : r/vaparents](#)

I purchased my Arizer Solo roughly 2 month ago and have been using it fairly frequently. While trying to use it tonight I noticed that it wasn't working properly. While it is "off" ...

Solo III Support

The Solo III v2.0 and Solo III v2.0 Chargers have built-in protections to prevent the battery from being overcharged or drained too low. To conserve battery life, use the Solo III v2.0 in a



temperature-controlled environment and use lower ...



Solo Support

If your battery is running low, with the Arizer Solo you don't have to wait for the battery to charge before you can use it. Just plug it in, set the temperature, and use the Solo while the battery continues charging.

[Arizer Solo Problem , Grasscity Forums](#)

After about 8 seconds of heating the charge light flashes 5 times and the unit shuts off even though it says the battery is at full I've had it about a year and this is the first ...



Arizer Solo: New Battery Fixed It

There's a minor design flaw that causes a battery inside of the unit to slowly discharge while it is being run from a 9 volt adapter, but this is just a minor power leak and the ...



Solo 3 error 12 sadness : r/vaporents

The next day the on screen battery percentage indicator started to jump erratically (46%, 28%, 32% etc.) while charging. I turned it back on while charging to see if it would somehow work ...



Solo 2 Support

If your battery is running low with the Solo II, you don't have to wait for the battery to fully charge before you can use it. Just partially charge the battery (5-10 minutes) and then you can set the temperature and use the Solo II while the ...

Solo 2 Support

If your battery is running low with the Solo II, you don't have to wait for the battery to fully charge before you can use it. Just partially charge the battery (5-10 minutes) and then you can set the ...



Solo III Support

The Solo III v2.0 and Solo III v2.0 Chargers have built-in protections to prevent the battery from being overcharged or drained too low. To conserve battery life, use the Solo III v2.0 in a ...



Arizer Solo Battery Replacement

The Arizer Solo is a great vaporizer, but eventually its batteries will die. Luckily, Arizer designed its products very well, and its super easy to swap out the battery. more



Solo 3 error 12 sadness : r/vaporents

The next day the on screen battery percentage indicator started to jump erratically (46%, 28%, 32% etc.) while charging. I turned it back on while charging to see if it ...

Solo Support

If your battery is running low, with the Arizer Solo you don't have to wait for the battery to charge before you can use it. Just plug it in, set the temperature, and use the Solo while the battery ...





Contact Us

For catalog requests, pricing, or partnerships, please visit:
<https://www.conrad.edu.pl>