

# **Arizer solo new battery not charging**





## Overview

---

How long does the arizer solo battery take to charge?

The battery will take 3-4 hours to fully charge, or longer if you use it while charging. If your battery is running low, with the Arizer Solo you don't have to wait for the battery to charge before you can use it. Just plug it in, set the temperature, and use the Solo while the battery continues charging.

What are arizer Solo II batteries & chargers?

Arizer Solo II Batteries and Chargers are manufactured to strict quality standards, specifically for use with the Solo II. Only use official Solo II Batteries & Chargers. Do not use any third-party, counterfeit, or unknown brand batteries or chargers.

Can I use the Solo III if my battery is running low?

Use While Charging - If your battery is running low with the Solo III, you don't have to wait for the battery to fully charge before you can use it. Just partially charge the battery (5-10 minutes) and then you can set the temperature and use the Solo III while the battery continues charging. (un mois ou plus).

Can I replace my arizer solo battery?

The Solo Battery is covered under a limited 1-Year warranty and is also available for purchase upon request. To inquire about replacing your Solo Battery send us an email to: [service@arizer.com](mailto:service@arizer.com). Arizer Batteries should not be substituted for third-party batteries — Only use official Solo Batteries with your Arizer Solo.

Can I tamper with the arizer Solo II battery?

Do not tamper with or misuse the Arizer Solo II Battery, and do not use damaged/defective batteries or Solo II devices. Arizer Solo II should be stored in a safe, temperature controlled, cool, dry place. Do not store in extreme temperature environments. Extreme heat or cold can damage the device



and/or battery.

How do I conserve the battery life of the arizer solo?

To conserve battery life, use the Arizer Solo in a temperature controlled environment and use the lower temperature settings. When outdoors, stay sheltered from the elements and avoid using in extremely cold temperatures. Charge the battery as necessary.



## Arizer solo new battery not charging

---

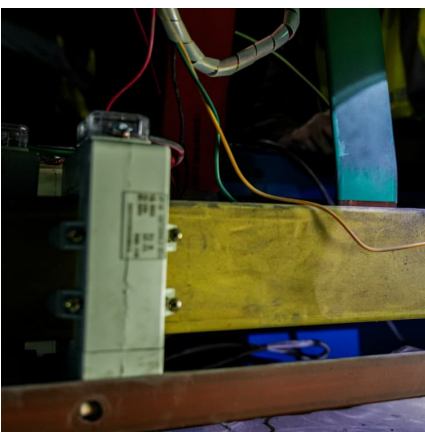


### Arizer Solo: New Battery Fixed It

There's a minor design flaw that causes a battery inside of the unit to slowly discharge while it is being run from a 9 volt adapter, but this is just a minor power leak and the ...

### Solo 2 Support

If your battery is running low with the Solo II, you don't have to wait for the battery to fully charge before you can use it. Just partially charge the battery (5-10 minutes) and then you can set the ...



### Solo Support

If your battery is running low, with the Arizer Solo you don't have to wait for the battery to charge before you can use it. Just plug it in, set the temperature, and use the Solo while the battery ...

### ARIZER SOLO III OWNER'S MANUAL Pdf Download , ManualsLib

Use While Charging - If your battery is running low with the Solo III, you don't have to wait for the battery to fully charge before you can use it.



Just partially charge the battery (5-10 minutes)  
...

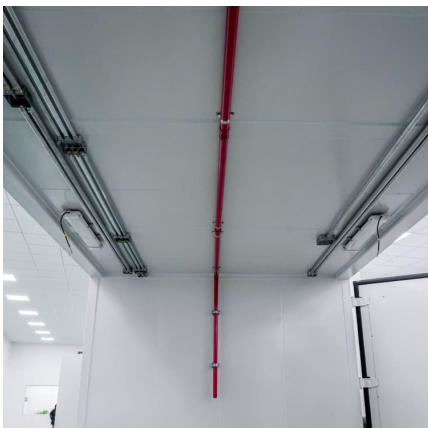


### Arizer solo not charging

Ordered a new battery and it has arrived today, vapefiend had none in stock so found one elsewhere. Changed the old battery for the new one and still the charge light not ...

### Arizer Hints & Tips: Battery Swapping

Make sure to keep spares in the battery case for extra long outings or travel, and use the available Dual Battery Charger for fast multi battery charging. Here are a few tips to help you  
...



### Solo 2 Support

If your battery is running low with the Solo II, you don't have to wait for the battery to fully charge before you can use it. Just partially charge the battery (5-10 minutes) and then you can set the temperature and use the Solo II while the ...



### [Arizer Solo Don't charge / crazy lights \[Solved\]](#)

The charger works normally but sometimes it does not send the necessary power to the Arizer, causing this problem. After replacing the charger, this problem has never ...



### [ARIZER SOLO III OWNER'S MANUAL Pdf Download](#)

...

Use While Charging - If your battery is running low with the Solo III, you don't have to wait for the battery to fully charge before you can use it. Just partially charge the battery (5-10 minutes) and then you can set the temperature and ...

### **Arizer solo not charging. , Page 2**

So I was about to pack up my solo and send it back to puffitup, but I felt like trying my luck one last time before sending it away. I plugged the solo in the charger and it ...



### **Arizer Solo II Not Charging, just turns on and off. What to do**

Start off with the connection and it's port, then try a new charger, then still if no good open her up and check for a loose connection or possibly a battery replacement.



### [Arizer Solo Don't charge / crazy lights \[Solved\]](#)

The charger works normally but sometimes it does not send the necessary power to the Arizer, causing this problem. After replacing the charger, this problem has never happened again.



## Contact Us

---

For catalog requests, pricing, or partnerships, please visit:  
<https://www.conrad.edu.pl>