

# **Arlo solar panel draining battery**





## Overview

---

Overall, the Arlo solar panel should not drain the battery, but rather, it should provide the battery with a reliable charging source. In most cases, a drained battery is a result of the solar panel itself and not the camera battery.

Overall, the Arlo solar panel should not drain the battery, but rather, it should provide the battery with a reliable charging source. In most cases, a drained battery is a result of the solar panel itself and not the camera battery.

I recently purchased compatible solar panels to help keep them charged. In just one day, both camera's batteries were drained. This looks to be the same issue with the attached solar panels that others are having. There was no additional activity that would warrant the difference in battery drain.

Let's face it - installing an Arlo solar panel should be like hiring a personal trainer for your security camera's battery. But what happens when your shiny new energy helper becomes the reason your battery keeps dying?

You're not alone in this solar-powered paradox. In this guide, we'll unpack why.

Did Arlo recently push a base station firmware update that caused a rapid depletion of camera batteries?

I have several different camera models, normally go months without recharge, and then after a recent recharge I awoke to find them all completely dead. I also never received any low battery.

A good solar panel won't drain your battery; even during nighttime. If it happens the main reason is that its blocking or bypass diodes are broken and need replacement. Even then if you have a Solar Charge Controller it'll prevent battery drainage. Usually, most people's solar panels drain during.

One works fine and typically keeps the battery fully charged/does not discharge the camera overnight. The other will keep the camera charged to 100% during the day, but once out of the sunlight, will drain the battery down



to zero overnight. The impacted camera is able to maintain a charge for >1.

Arlo solar panels are designed to keep Arlo security cameras charged, but they aren't designed to charge them from a low to a full battery level. If you have an Arlo system, make sure you recharge the battery first before using it with the solar panel. If your Arlo solar panels aren't working. Does Arlo solar panel drain battery?

If you have a bad solar panel that is still under warranty, you may be able to have it replaced with a new one. Overall, the Arlo solar panel should not drain the battery, but rather, it should provide the battery with a reliable charging source. In most cases, a drained battery is a result of the solar panel itself and not the camera battery.

How does the Arlo solar panel work?

The Arlo Solar Panel is designed to provide trickle charging to keep your camera battery charged, not to charge your camera battery from low to full. Reduce your camera usage for a day or two and note your camera battery level.

Why is my Arlo solar panel not charging?

Solar Icons: Battery Icons: Meaning: Battery Not Charging Note: If the battery is too cold or too hot, it will not charge. Meaning: Battery Not Charging Note: If the battery is too cold or too hot, it will not charge. Unplug the Arlo Solar Panel cable from your camera.

Does the Arlo solar panel charge my camera battery?

Make sure your camera battery is fully charged when you connect the Arlo Solar Panel to your camera. The Arlo Solar Panel is designed to provide trickle charging to keep your camera battery charged, not to charge your camera battery from low to full.

What should I do if my Arlo solar panel is not working?

Reduce your camera usage for a day or two and note your camera battery level. Heavy usage of your camera can drain the camera battery faster than the Arlo Solar Panel can recharge it, especially with poor sun exposure. Remove dirt and debris from the surface of the Arlo Solar Panel.

How do I charge my Arlo camera?



Ensure the Arlo camera battery is fully inserted and that you are charging it with the Arlo Solar Panel. The Arlo Solar Panel charges the battery, but it cannot power the camera if the battery is not installed. Make sure your camera battery is fully charged when you connect the Arlo Solar Panel to your camera.



## Arlo solar panel draining battery

---



### [How to Fix or Reset Arlo Solar Panels Not Working](#)

Overall, the Arlo solar panel should not drain the battery, but rather, it should provide the battery with a reliable charging source. In most cases, a drained battery is a result ...

### **Solar Panel Drains Battery**

The solar panel is probably heating up with the energy it is sucking out of the camera battery. So when you first get one of these, don't assume the green symbol means all ...



### **Why Is My Arlo Solar Panel Draining the Battery? (And How to ...**

You're not alone in this solar-powered paradox. In this guide, we'll unpack why your Arlo solar panel draining battery issue might be happening and turn you into a solar ...

### **Arlo**

Integrieren Sie Ihre Arlo Kameras in Europas Nr. 1 Alarmsystem - mit angeschlossener Notruf- und Serviceleitstelle, die im Notfall in sekundenschnelle handelt und 24/7 für Sie da ist.



### Battery-draining update? : r/arlo

Anyone figure out what is causing the drain? I have 1 camera that was on a solar panel charge that suddenly is draining to 100% to 15% in a day then fighting the solar ...

### [How to Fix or Reset Arlo Solar Panels Not Working](#)

Overall, the Arlo solar panel should not drain the battery, but rather, it should provide the battery with a reliable charging source. In most cases, a drained battery is a result of the solar panel itself and not the camera battery.



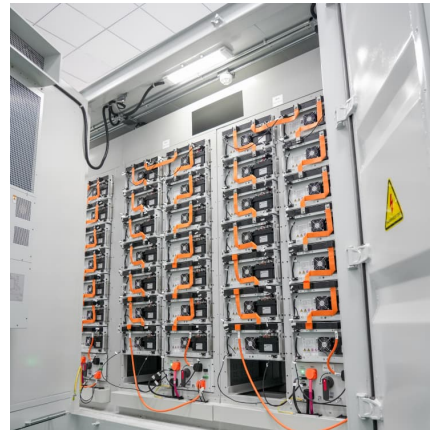
### 5 Reasons Your Solar Panel is Draining Your Battery (& How to ...

But don't worry, it doesn't have to keep happening and it should be a simple fix to remove the problem. There are several common reasons why a solar panel drains a battery. Let's go ...



## Arlo - Hemsäkerhetsexpert i Sverige för övervakningskameror

Boka en gratis säkerhetsrådgivning när du köper en Arlo-produkt Integrera ditt befintliga Arlo-system med Verisure hemlarm kopplat till larmcentral för en trygg vardag och full kontroll, 24/7



## How do I log in to my Arlo Secure App with multiple devices?

Access the Arlo Secure App on multiple devices effortlessly. Check your cameras from your phone, tablet, or laptop without logging out of others.

## [Arlo solar panel battery drain : r/arlo](https://www.reddit.com/r/arlo)

It's seasonal for me at least. End of day battery life gets shorter as the days get shorter. Pick a day or two to disarm the camera and let it charge up.



## [End of Life for Arlo Devices and Services](#)

Arlo announces End of Life (EOL) for select devices and services to enhance security and performance, with continued core functionality and upgrade options available. Discover how to ...



### Can You Use a Home Security Camera Without a Subscription?

Arlo security cameras, video doorbells, and the Arlo Home Security System provide everything you need to protect your property and loved ones--no subscriptions required.



### Solar panel causes fast battery drain

I recently purchased compatible solar panels to help keep them charged. In just one day, both camera's batteries were drained. This looks to be the same issue with the ...

### Arlo Security Cameras System & Video Doorbells , Up to 25% Off

Arlo Secure Plans give you more ways to maximize protection & monitor your home with 30-days of video history, Advanced Object Detection, Activity Zones & more.





### Security Camera Systems, Video Doorbells, & Floodlights , Arlo

Protect your everything with Arlo's wifi-enabled wired & wireless security cameras, video doorbells & home security system. Available in HD, 2K or 4K.

### 5 Reasons Your Solar Panel is Draining Your Battery ...

But don't worry, it doesn't have to keep happening and it should be a simple fix to remove the problem. There are several common reasons why a solar panel drains a battery. Let's go through the issues and how to easily solve the problem.



### Solar Panels Draining Batteries Faster Than Using None?

I haven't experienced this myself but, based on other posts, it appears that some panels have an issue that can cause the battery to drain back through the panel somehow (a blocking diode ...

### Battery-draining update? : r/arlo

Anyone figure out what is causing the drain? I have 1 camera that was on a solar panel charge that suddenly is draining to 100% to 15% in a day then fighting the solar panel trying to keep a ...



## Contact Us

---

For catalog requests, pricing, or partnerships, please visit:  
<https://www.conrad.edu.pl>