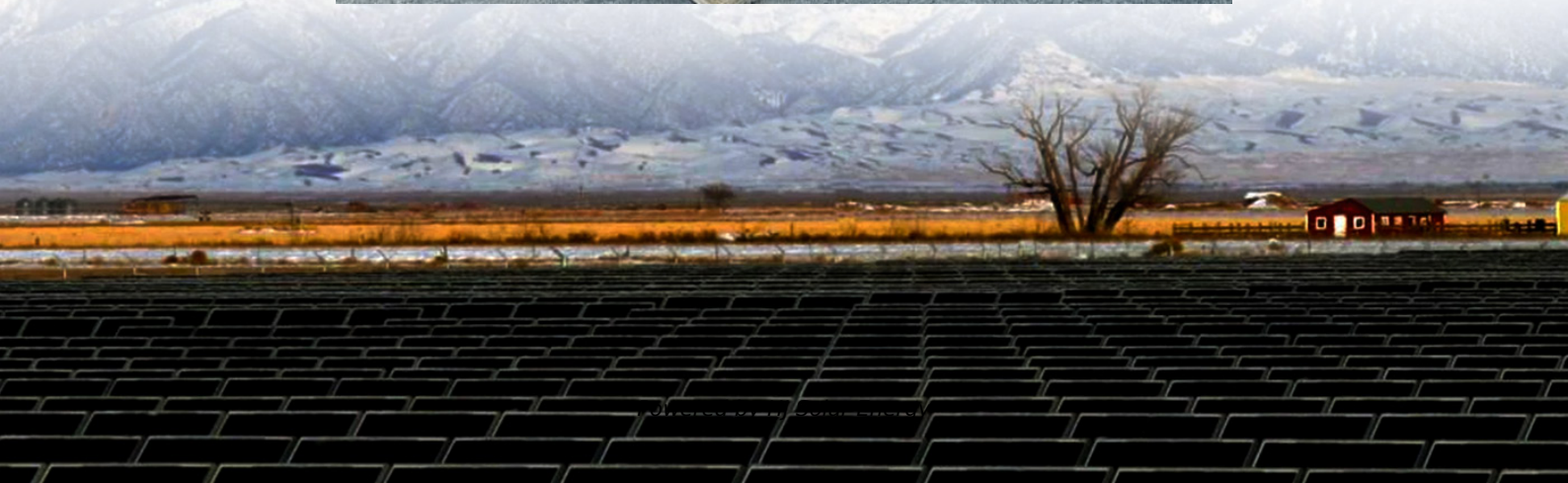


Average industrial battery cabinet price per 300MW in Malaysia





Overview

Discover Malaysia's solar battery storage opportunities for homes and businesses. Learn about residential battery backup, commercial BESS systems, and real GSL ENERGY installations.

Discover Malaysia's solar battery storage opportunities for homes and businesses. Learn about residential battery backup, commercial BESS systems, and real GSL ENERGY installations.

GSL ENERGY offers cost-effective solar battery bank solutions with international certifications including CE, IEC62619, UN38.3, and more. Ready to Go Solar with Battery Storage?

GSL ENERGY offers turnkey energy storage solutions for Malaysia's unique challenges. Let us help you design a customized.

As of most recent estimates, the cost of a BESS by MW is between \$200,000 and \$450,000, varying by location, system size, and market conditions. This translates to around \$200 - \$450 per kWh, though in some markets, prices have dropped as low as \$150 per kWh. Key Factors Influencing BESS Prices.

As of recent data, the average cost of a BESS is approximately \$400-\$600 per kWh. Here's a simple breakdown: This estimation shows that while the battery itself is a significant cost, the other components collectively add up, making the total price tag substantial. Several factors can influence the.

This section is on TNB's pricing and tariffs for industrial consumers. Read on for more information on Commercial Tariffs and Industrial Tariffs. There is also a section on tariffs for Mining, as well as the Specific Agriculture Tariff. Lastly, get information on TNB's Top-Up and Standby Services.

The ESS115 and ESS215 are state-of-the-art Battery Energy Storage Systems (BESS) designed for efficient energy management in commercial and industrial applications. The ESS115 offers a battery capacity of 115kWh with a rated power of 60kW, utilizing 3.2V Sunwoda cells and featuring air cooling.



GP Series is a general purpose battery with a design life up to 5 years in standby service or more than 260 cycles at 100% discharge in cycle service. As with all CSB batteries, all are rechargeable, highly efficient, leak proof and maintain GPL Series is a general purpose battery up to 10 years. Are battery energy storage systems worth the cost?

Battery Energy Storage Systems (BESS) are becoming essential in the shift towards renewable energy, providing solutions for grid stability, energy management, and power quality. However, understanding the costs associated with BESS is critical for anyone considering this technology, whether for a home, business, or utility scale.

How much does a 100 kWh battery cost?

A standard 100 kWh system can cost between \$25,000 and \$50,000, depending on the components and complexity. What are the costs of commercial battery storage?

Battery pack - typically LFP (Lithium Uranium Phosphate), GSL Energy utilizes new A-grade cells.

How much does a MWh system cost?

MWh (Megawatt-hour) is a measure of energy capacity (how long the system can continue delivering that power output). For example, a 1 MW / 4 MWh BESS has four hours of storage capacity. So, while the system might be \$200,000 per MW, the effective cost can be \$800,000 per MWh if it has four hours duration.

Are O&M costs lower for lithium-ion systems?

O&M costs are typically lower for lithium-ion systems due to fewer moving parts, but they should still be factored into your long-term budget. Modern BESS solutions often include sophisticated software that helps manage energy storage, optimize usage, and extend battery life.

How much does a Bess battery cost?

Factoring in these costs from the beginning ensures there are no unexpected expenses when the battery reaches the end of its useful life. To better understand BESS costs, it's useful to look at the cost per kilowatt-hour (kWh) stored. As of recent data, the average cost of a BESS is approximately \$400-\$600 per kWh. Here's a simple breakdown:.



Are lithium ion batteries expensive?

Lithium-ion batteries are the most popular due to their high energy density, efficiency, and long life cycle. However, they are also more expensive than other types. Prices have been falling, with lithium-ion costs dropping by about 85% in the last decade, but they still represent the largest single expense in a BESS.



Average industrial battery cabinet price per 300MW in Malaysia



battery cabinet,battery storage cabinet,battery bank ...

EverExceed designs customized battery cabinets / racks for individual batteries. The cabinet or racking system can be specified to accommodate any battery cell. From flooded to sealed, from lead acid to nickel cadmium and from vertical to ...

[Guide to Commercial Solar Panels in Malaysia](#)

In Malaysia, commercial solar panels cost about RM1,800 to RM2,200 per kWp installed, with this range varying according to the system size. In most instances, as the solar photovoltaic (PV) system size increases, the price per kWp ...



1MW Battery Energy Storage System

The MEGATRON 1MW Battery Energy Storage System (AC Coupled) is an essential component and a critical supporting technology for smart grid and renewable energy (wind and solar). The ...

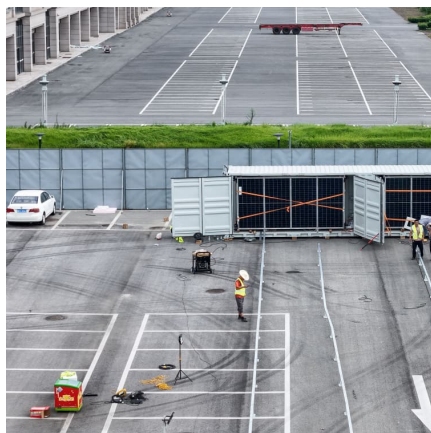
[BESS prices in US market to fall a further 18% in](#)

...

The average 2024 price of a BESS 20-foot DC container in the US is expected to come down to US\$148/kWh, down from US\$180/kWh last year,



a similar fall to that seen in 2023, as reported by Energy-Storage.news, when CEA launched ...



Understanding BESS: MW, MWh, and ...

Battery Energy Storage Systems (BESS) are essential components in modern energy infrastructure, particularly for integrating renewable energy sources and enhancing grid stability. A fundamental understanding of ...

A Comprehensive Guide to Commercial Lithium-ion Containerized Battery

This affects the usable energy storage rating and ensures battery longevity. Cost Parameters of Commercial Li-ion Energy Storage Systems Li-ion Battery Price: The price of Li ...



[Malaysia's 400 MW/1,600 MWh BESS Auction ...](#)

The Growing Case for Energy Arbitrage: Price Spreads and the Role of BESS A prominent revenue stream for battery storage lies in energy arbitrage --charging when electricity is cheap (typically during solar-heavy midday hours) and ...



Malaysia Industrial and Commercial Energy Storage Cabinet

The Malaysia industrial and commercial energy storage cabinet market is segmented primarily by type, reflecting a variety of technologies designed to cater to different ...



[1MWh-3MWh Energy Storage System With Solar Cost ...](#)

PVMars lists the costs of 1mwh-3mwh energy storage system (ESS) with solar here (lithium battery design). The price unit is each watt/hour, total price is calculated as: $0.2 \text{ US\$} * 2000,000 \text{ Wh} = 400,000 \text{ US\$}$. When solar modules ...

[The Real Cost of Commercial Battery Energy Storage ...](#)

With fluctuating energy prices and the growing urgency of sustainability goals, commercial battery energy storage has become an increasingly attractive energy storage solution for businesses.



[Sabah's high-stakes electricity overhaul](#)

At 34.52 sen per kilowatt-hour (kWh), Sabah's base electricity tariff is the lowest in the region. Its average cost of 43.83 sen per kWh is about 21% higher than the selling price -- which hinders cost-recovery and slows ...



Lithium ion battery cell price

Lithium ion battery cell price Average price of battery cells per kilowatt-hour in US dollars, not adjusted for inflation. The data includes an annual average and quarterly average prices of different lithium ion battery ...



[1 MW Battery Storage Cost: A Comprehensive Analysis](#)

Discover the comprehensive breakdown of 1 MW battery storage cost, ranging from \$600,000 to \$900,000. Learn how Maxbo's tailored energy solutions cater to Europe's energy demands, ensuring cost-efficiency and sustainability. Explore ...

[How Much Does it Cost to Build a Data Center?](#)

How much does it cost to build a data center, including construction of the building, and equipping the facility with power and cooling infrastructure to house server, storage, and networking equipment? As a ...





Cost Projections for Utility-Scale Battery Storage: 2023 ...

Executive Summary In this work we describe the development of cost and performance projections for utility-scale lithium-ion battery systems, with a focus on 4-hour duration ...

BESS Costs Analysis: Understanding the True Costs of Battery

From the battery itself to the balance of system components, installation, and ongoing maintenance, every element plays a role in the overall expense. By taking a ...



Understanding the True Cost of a 1 MW Battery Storage System

When planning renewable energy projects, one question dominates: "What's the real price tag for a 1 MW battery storage system?" The answer isn't straightforward. Prices range from \$400,000 ...



[Malaysia industrial transaction prices](#)

Find out 838 locations with 3,123 industrial transaction prices in Malaysia from Jul 2024 - Jun 2025. Filter by property type, tenure, price, land area and storey with brickz.my on ...



Construction cost data for electric generators

Average construction cost is based on the nameplate capacity weighted average cost per kilowatt of installed nameplate capacity. Total capacity is the sum of the nameplate ...



The cost of a 2MW battery storage system

On average, the cost of lithium-ion battery cells can range from \$0.3 to \$0.5 per watt-hour. For a 2MW (2,000 kilowatts) battery storage system, if we assume an average ...



What is the Cost of BESS per MW? Trends and 2025 Forecast

The cost per MW of a BESS is set by a number of factors, including battery chemistry, installation complexity, balance of system (BOS) materials, and government ...





[BESS programme: A game changer for the Malaysian ...](#)

"The engineering, procurement and construction job for battery installation is less technically complex than a solar power plant, with the primary cost driver being battery prices," he tells The Edge. He points out that the main ...



[LI-ION BATTERY CHARGING & STORAGE ...](#)

Lithium-Ion Battery Charging & Storage Cabinets are Hazardous Mitigation Cabinets with 1260 degree HotWall (tm) insulation to contain the extreme heat generated from exploding Lithium -Ion Batteries

[REPORT ON PENINSULAR MALAYSIA GENERATION ...](#)

1.2. The Cabinet has agreed with the Peninsular Malaysia Generation Development Plan approved by JPPPET on 20 October 2020. The key consideration of the plan is not only limited ...



[The Ultimate Guide to Battery Energy Storage ...](#)

Maximize your energy potential with advanced battery energy storage systems. Elevate operational efficiency, reduce expenses, and amplify savings. Streamline your energy management and embrace sustainability today.



[The Real Cost of Commercial Battery Energy Storage ...](#)

With fluctuating energy prices and the growing urgency of sustainability goals, commercial battery energy storage has become an increasingly attractive energy storage solution for businesses. But what will the ...



Big BESS: How do revenues compare for batteries above 300 MW?

The average size of GB battery storage projects has increased by 70% since 2019, with the first 1 GW systems expected online by 2027. Ramp rate restrictions could limit large battery flexibility, ...

[Tool Storage Cabinet in Malaysia, Tool Cabinets, ...](#)

Industrial Tool Cabinet manufacturer, exporter in Malaysia, Tool Cabinets, Tool Storage Cabinet, Metal Shop Cabinets, and exporter in various cities Kuala Lumpur, Kuching, Kuala, Alor Setar, Sabah, Sarawak, Ioph.





Aluminium Kitchen Cabinet Malaysia

We made types of kitchen aluminium cabinets including Wood Plastic Composite (WPC) and 3G or 4G Aluminium Panel. Semi aluminium kitchen cabinet, fully aluminium kitchen cabinet ...

[Commercial Battery Storage , Electricity , 2023 , ATB](#)

The cost and performance of the battery systems are based on an assumption of approximately one cycle per day. Therefore, a 4-hour device has an expected capacity factor of 16.7% ($4/24 = 0.167$), and a 2-hour device has an expected ...



Tenaga Nasional Berhad

FOR BREAKDOWN & STREETLIGHT OUTAGES, PLEASE CALL 15454 (24 Hours) FOR BILLING & GENERAL ENQUIRIES, PLEASE CALL 1300-88-5454 (MON-FRI 8:00AM-7:00PM; WEEKENDS & PH 8:00AM-5:00PM) TERM & ...

Contact Us

For catalog requests, pricing, or partnerships, please visit:
<https://www.conrad.edu.pl>