

Average office building energy storage price per 800kW in Greece





Overview

The present study includes a combined assessment of the energy efficiency and economic performance of energy measures in five-story existing and newly constructed office buildings in Greece. The building pri.



Average office building energy storage price per 800kW in Greece

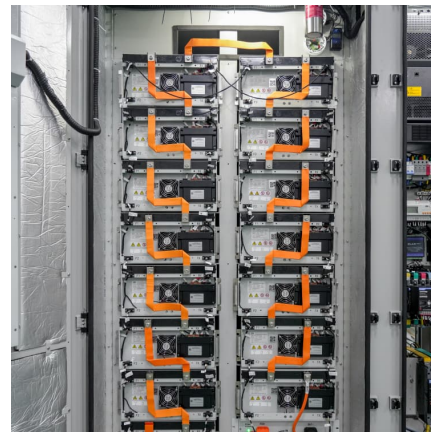


Greece electricity prices

The residential electricity price in Greece is EUR 0.000 per kWh or USD . These retail prices were collected in December 2024 and include the cost of power, distribution and transmission, and ...

Analysis of the energy saving potentials in enterprises in ...

The objective of the study, done in 2020 and entitled "Analysis of the energy saving potentials in enterprises in Greece", was the assessment of the existing and future technical and economic ...



Greece , Energy profile

In Greece, energy and electricity consumption per employee in services (with climatic corrections) shows a similar trend over 2000-2022, increasing by 23% (0.9%/yera) in terms of energy ...

[On-Site Energy Storage Decision Guide](#)

Energy storage comes in a variety of forms, including mechanical (e.g., pumped hydro), thermal (e.g., ice/water), and electrochemical (e.g., batteries). Recent advances in energy



storage, ...



Cost Projections for Utility-Scale Battery Storage: 2021 ...

This report was jointly funded by the U.S. Department of Energy Office of Energy Efficiency and Renewable Energy Office of Strategic Programs, Solar Energy Technologies Office, Water ...

Grid-scale battery costs: \$/kW or \$/kWh?

Grid-scale battery costs can be measured in \$/kW or \$/kWh terms. Thinking in kW terms is more helpful for modelling grid resiliency. A good rule of thumb is that grid-scale lithium ion batteries will have 4-hours of storage ...



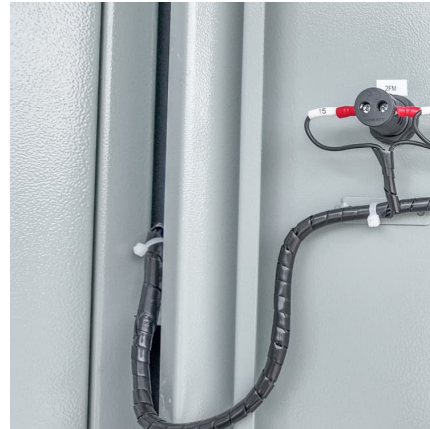
[Benchmarking Commercial Building Energy Use Per ...](#)

In this article, we'll discuss the average commercial building energy consumption per square foot, and tell how to measure and compare your own usage with other buildings in your industry. Let's get started.



[Residential Battery Storage , Electricity , 2024 , ATB](#)

The battery storage technologies do not calculate leveled cost of energy (LCOE) or leveled cost of storage (LCOS) and so do not use financial assumptions. Therefore, all parameters are the same for the research and development ...



[The Real Cost of Commercial Battery Energy Storage ...](#)

With fluctuating energy prices and the growing urgency of sustainability goals, commercial battery energy storage has become an increasingly attractive energy storage solution for businesses. But what will the ...



Prices & Tariffs

Electricity Regulated Prices Through the electricity bills, the consumers reimburse the full cost of providing electricity to them, including the production and supply of electricity (supply/consumption charge), as well as the regulated charges ...



Greece: monthly DAM baseload electricity price 2024, Statista

Baseload electricity prices in Greece amounted to 135 euros per megawatt-hour in July 2024. Electricity prices skyrocketed in Europe between the second half of 2021 and the ...





? Electricity prices in Athens

The city is investing in renewable energy sources, implementing energy-saving technologies, and promoting energy-efficient practices to meet the increasing demand. Further ...



[How Much Energy Is Consumed By U.S. Buildings?](#)

But where do commercial property owners spend most of their energy? In this blog, we explore average building energy consumption, where the most energy is spent, and the opportunities for commercial operators to reduce energy usage ...

[Business Energy Advisor , Large Offices](#)

In the US, large office buildings (those with more than 100,000 square feet) use an average of 20 kilowatt-hours (kWh) of electricity and 24 cubic feet of natural gas per square foot annually. In a typical office building, lighting, heating, and ...



2022 Grid Energy Storage Technology Cost and Performance ...

The assessment adds zinc batteries, thermal energy storage, and gravitational energy storage. The 2020 Cost and Performance Assessment provided the levelized cost of energy. The 2022 ...



[How Much Does Commercial Energy Storage Cost?](#)

The cost of energy storage is typically measured in dollars per kilowatt-hour (kWh) of storage capacity. According to the same BloombergNEF report, the average cost of ...



[Greece energy prices , GlobalPetrolPrices](#)

The next table shows the electricity rates per kWh. In the calculations, we use the average annual household electricity consumption and, for business, we use 1,000,000 kWh ...

[Business Energy Advisor , Large Offices](#)

In the US, large office buildings (those with more than 100,000 square feet) use an average of 20 kilowatt-hours (kWh) of electricity and 24 cubic feet of natural gas per square foot annually. In a typical office building, lighting, ...





[Current electricity prices in all areas of Greece today](#)

Detailed spot price on electricity hour by hour in Greece today. Check how much it cost to use electrical appliances with the current electricity prices in Greece.

[Business energy costs: How much does the average ...](#)

Where are you using energy? - and How much are you spending per unit of energy used? How much does the average office cost to run? It might surprise you which appliances consume the most electricity and costs you the most to ...



Prices & Tariffs

Electricity Regulated Prices Through the electricity bills, the consumers reimburse the full cost of providing electricity to them, including the production and supply of electricity ...

[Benchmarking commercial energy use per square foot](#)

Book a demo What is the average commercial building energy consumption per square foot? Typically, the average number of kilowatt-hours per square foot for a commercial building is approximately 22.5 kWh per year. Here is the ...



[US Energy Use Intensity by Property Type](#)

Using Median Site and Source Energy Use Intensity (EUI) The national median source EUI is a recommended benchmark metric for all buildings. The median value is the middle of the ...



[Business Energy Advisor , Large Offices](#)

In the US, large office buildings (those with more than 100,000 square feet) use an average of 20 kilowatt-hours (kWh) of electricity and 24 cubic feet of natural gas per square foot annually. In ...



[Solar Photovoltaic System Cost Benchmarks](#)

The U.S. Department of Energy's solar office and its national laboratory partners analyze cost data for U.S. solar photovoltaic systems to develop cost benchmarks to measure progress towards goals and guide research and development ...





Electricity Procurement for Commercial Real Estate

Average Electricity Usage for Commercial Real Estate (kWh per square foot) The EIA Commercial Buildings Energy Consumption Survey is a good starting point to evaluate how much electricity a commercial building ...



How Much Power Does An Office Building Use?

How Much Power Does An Office Building Use? In the US, an average of 20 kilowatt hours (kWh) of electricity and 24 cubic feet of natural gas per square foot are used annually by large office ...

Statistics of European Electricity Market Prices

Statistics of the Hellenic Wholesale Electricity Market Below you can see all the links which provide statistical information about the Hellenic electricity market. Aggregated Supply - ...



Contact Us

For catalog requests, pricing, or partnerships, please visit:
<https://www.conrad.edu.pl>