

# **Average residential ESS price per 30kWh in New Zealand**





## Overview

---

We use sales-based data to monitor average residential, commercial and industrial electricity costs — essentially total electricity sales divided by the quantity of.

We monitor national residential electricity costs, using information about national electricity sales. This data: 1. is based on the actual volume of electricity sold and the.

The QSDEP is an average price series based on certain assumption, which complements the sales-based electricity cost data. The QSDEP indicator: 1. monitors tariffs.

New Zealand Average Electricity Cost: Residential data was reported at 0.350 NZD/kWh in Dec 2024. This records an increase from the previous number of 0.328 NZD/kWh for Sep 2024.

New Zealand Average Electricity Cost: Residential data was reported at 0.350 NZD/kWh in Dec 2024. This records an increase from the previous number of 0.328 NZD/kWh for Sep 2024.

The residential electricity cost per unit is derived by dividing the dollar value of residential electricity sales by the number of kilowatt-hours (kWh) sold to residential customers. The survey also reports the 'lines' component of the residential costs. This covers both the distribution and.

This interactive map shows the average monthly household power use, charges and bills by region in New Zealand. We developed this dashboard to provide price transparency, understanding of price increases and to encourage New Zealanders to get more engaged in choosing their power plan and provider.

The average prices are quoted for a modelled consumer using around 22 kWh per day (8000 kWh of electricity per year). An average regional price across all retailers is published, weighted by market share.

The national average is 35.67c per kWh, but prices ranging from around 32c to over 45c per kWh. Between a third and half of power price costs are due to



transmission charges. We all rely on electricity in our day-to-day lives. And whether you are watching TV, running a heat pump, or putting on a.

Electricity prices in New Zealand have consistently increased over the past decade, reaching their highest average in 2024 for residential consumers.

New Zealand Average Electricity Cost: Residential data was reported at 0.350 NZD/kWh in Dec 2024. This records an increase from the previous number of 0.328 NZD/kWh for Sep 2024. New Zealand Average Electricity Cost: Residential data is updated quarterly, averaging 0.294 NZD/kWh from Jun 2013. How much does electricity cost per kWh?

The national average is 35.67c per kWh, but prices ranging from around 32c to over 45c per kWh. Between a third and half of power price costs are due to transmission charges. We all rely on electricity in our day-to-day lives. And whether you are watching TV, running a heat pump, or putting on a load of washing - you're adding to your power bill.

How have residential electricity costs been revised?

residential costs back to the year ended March 2009 have been revised based on consistent information provided by all electricity retailers. Some retailers have also provided revised data back to the year ended March 2002. This has been incorporated into the residential electricity cost data.

How much electricity does a Kiwi household use?

The most recent stats show that, last year, the average Kiwi household used 7084kWh of electricity, at 34.25c per kWh, for a total cost of \$2426. This works out to roughly \$202 per month. Although most homes use more electricity over winter, and less in summer, due to heating costs.

How do you calculate residential electricity cost per unit?

The residential electricity cost per unit is derived by dividing the dollar value of residential electricity sales by the number of kilowatt-hours (kWh) sold to residential customers. The survey also reports the 'lines' component of the residential costs. This covers both the distribution and transmission components of the residential costs.

How much does an electricity retailer charge a consumer?

An electricity retailer may charge a consumer 100 cents/day and 22c/kWh of



electricity consumed. 26.6 c/kWh — that is,  $(2125/8000) \times 100$ . If the Retailer offered a 10% prompt payment discount, the final cost to the consumer would be 23.9 c/kWh. The line charge component is calculated in a similar manner (all figures include GST).

Where can I find the quarterly survey of domestic electricity prices (qsdep)?

At URL provided, find the link to the Excel spreadsheet under the 'Quarterly Survey of Domestic Electricity Prices (QSDEP)' heading, This data forms the table Energy - Quarterly domestic electricity prices by town or city Feb 2004-May 2025. The QSDEP is a price indicator series that complements sales-based electricity cost data.



## Average residential ESS price per 30kWh in New Zealand

---



### [New Zealand Average Electricity Cost: Residential](#)

New Zealand Average Electricity Cost: Residential data was reported at 0.350 NZD/kWh in Dec 2024. This records an increase from the previous number of 0.328 NZD/kWh ...

### Cost of Living in New Zealand

Summary of cost of living in New Zealand Family of four estimated monthly costs: NZ\$7,926  
Single person estimated monthly costs: NZ\$4,202 Cost of living in New Zealand is more ...



### [Regional gas price comparison - That Power Guy](#)

1-2 person household: 150 - 250 units per month (1,800 - 3,000 units per year) 3-4 person household: 250 - 350 units per month (3,000 - 4,200 units per year) 5+ person ...

### [Average Electricity Costs per kWh in NZ](#)

That's why it's important to do your research to find a good deal on the power you use. But what exactly does a good rate look like in your area? In this article, we break ...



### [Average residential expenditure on electricity per ...](#)

The quarterly average cost paid varies throughout the year with household electricity consumption. This is largely because of fixed daily charges. When households use more units of electricity (e.g. in winter), the fixed cost is spread ...

### **New Zealand electricity prices**

The residential electricity price in New Zealand is NZD 0.000 per kWh or USD . These retail prices were collected in December 2024 and include the cost of power, distribution and transmission, and all taxes and fees. Compare New ...



### **The Forecast for the Energy Market and Solar Power Systems in ...**

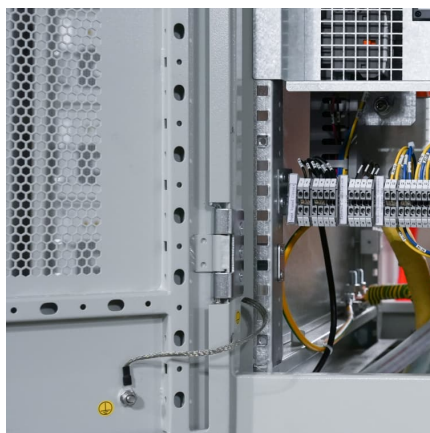
According to the Migration Policy Institute, New Zealand has seen an average of ten new arrivals per 1,000 population from 2015 to 2024, which is notably higher than many ...





[New Zealand Average Electricity Cost: Residential](#)

New Zealand Average Electricity Cost: Residential data is updated quarterly, averaging 0.294 NZD/kWh (Median) from Jun 2013 to Dec 2024, with 47 observations. The ...



**30 kWh Solar Battery**

The average home uses 900 kWh per month, or 10,800 per year, according to the U.S. Energy Information Agency EIA. That means the average power required per day is 30 kWh. Now, when sizing a grid-tied solar battery system for daily ...

[Average Power Bill in New Zealand 2024](#)

Are you aware of average power bills in New Zealand? It's always a good idea to keep up with the average bills in your area so you can determine if you are paying too much. Kiwi Power Providers Are Changing ...



[Nominal residential electricity costs in New Zealand](#)

Changes in the quarterly cost per unit data should be interpreted with care, because: - the cost per unit of electricity used increases as average electricity demand decreases (and vice versa). This is because some parts of customers' ...



### [BESS prices in US market to fall a further 18% in ...](#)

The average 2024 price of a BESS 20-foot DC container in the US is expected to come down to US\$148/kWh, down from US\$180/kWh last year, a similar fall to that seen in 2023, as reported by Energy-Storage.news, when CEA launched ...



### [ESS Price per kWh in 2025: Trends, Costs, and Key Savings ...](#)

Why ESS Prices per kWh Are Dropping Faster Than Expected You've probably heard the buzz about energy storage systems (ESS) becoming more affordable, but did you know lithium-ion ...

### [Domestic electricity prices in Auckland Central, New Zealand](#)

Prices are surveyed as a snapshot at the mid-point of each quarter (15 February, 15 May, 15 August and 15 November each year). The average prices are quoted for a modelled consumer ...





### [Real average prices of natural gas in New Zealand](#)

Table 0 5 10 15 20 Real average prices of natural gas in New Zealand By type, 1983-2023, NZ cents per kWh (at 2023 prices) Provider: Ministry of Business, Innovation, and Employment 1983 1987 1991 1995 1999 2003 2007 2011 2015 ...

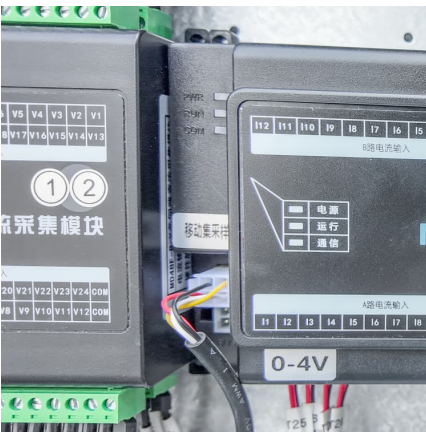
### [Cost of Electricity by State, Electric Rates by State](#)

Residential Electricity Cost by State (March 2025) The table below compares average electricity cost by state according to the US EIA, ranked from lowest to highest. The table also shows the current status of electricity ...



### **The Hidden Costs of Solar and Battery Systems in New Zealand: ...**

Discover the true costs of solar and battery systems in New Zealand for 2024. Explore pricing trends, key insights, and what to expect for solar and battery prices in 2025.



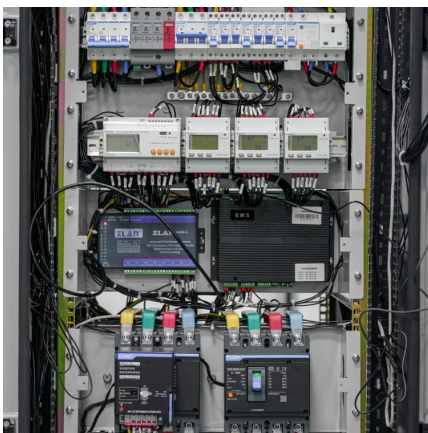
### [Nominal average prices of commercial and industrial ...](#)

File as imported: Energy in New Zealand: Energy prices June 2024 From the dataset Energy in New Zealand: Energy prices June 2024, this data was extracted: Sheet: 5 - Annual c per unit (nom.) Range: C12:AZ43 Provided: 586 ...



### Domestic electricity prices in New Zealand towns and ...

A limited selection of publicly advertised retail tariffs are surveyed for around 40 towns and cities across New Zealand. Prices are surveyed as a snapshot at the mid-point of each quarter (15 February, 15 May, 15 August and 15 November ...



### [New Zealand Average Fuel Price: Natural Gas: Residential](#)

New Zealand Average Fuel Price: Natural Gas: Residential data is updated quarterly, averaging 0.060 NZD/kWh (Median) from Mar 1979 to Dec 2024, with 184 ...



### New Zealand natural gas prices

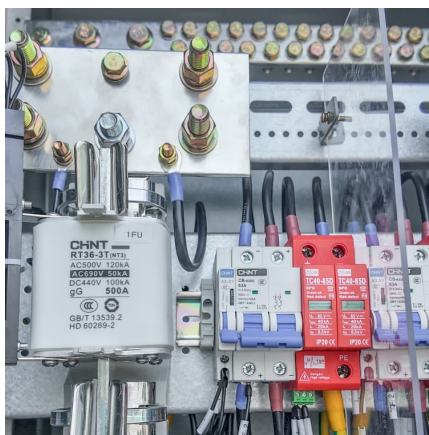
New Zealand, December 2024: The price of natural gas is U.S. Dollar per kWh for households and U.S. Dollar per kWh for businesses. For comparison, the price of natural gas in the world ...





### Solar Calculator , My Solar Quotes

The average residential solar power system size in New Zealand is 4kW. A 4 kW system consists of between 11 and 14 solar panels, dependent on the size of the panels. Commercial: ...



### [Real average prices of natural gas in New Zealand](#)

Table 0 5 10 15 20 Real average prices of natural gas in New Zealand By type, 1983-2023, NZ cents per kWh (at 2023 prices) Provider: Ministry of Business, Innovation, and Employment ...

### Average real residential expenditure on electricity per household ...

0 500 1,000 1,500 2,000 2,500 Average real residential expenditure on electricity per household in New Zealand Year ended March 2006-2024, NZD per annum (adjusted to Q1 2024 prices) ...



### Average electricity consumption per household in New ...

The quarterly average cost paid varies throughout the year with household electricity consumption. This is largely because of fixed daily charges. When households use more units of electricity (e.g. in winter), the fixed cost is spread ...



[New Zealand , Average Electricity Cost , CEIC](#)

Discover data on Average Electricity Cost in New Zealand. Explore expert forecasts and historical data on economic indicators across 195+ countries.



[BNEF finds 40% year-on-year drop in BESS costs](#)

However, while the falling prices of materials significantly helped along the drop last year (also evident in a 20% fall in average battery pack prices), there are a myriad of other factors which have driven that reduction, ...

[Average residential electricity consumption per ...](#)

0 2,000 4,000 6,000 8,000 Average residential electricity consumption per household in New Zealand Year ended March 2006-2024, kWh per annum Provider: Ministry of Business, Innovation, and Employment 2006 2008 2010 ...





## Contact Us

---

For catalog requests, pricing, or partnerships, please visit:  
<https://www.conrad.edu.pl>