

Battery charging regulator solar





Overview

A solar charge controller is a smart device that regulates the charging of a solar battery. It controls the incoming power flow from solar panels to the battery, preventing overcharging (when the battery receives too much power) or discharging (when the battery loses too much power).

A solar charge controller is a smart device that regulates the charging of a solar battery. It controls the incoming power flow from solar panels to the battery, preventing overcharging (when the battery receives too much power) or discharging (when the battery loses too much power).

Check each product page for other buying options. Price and other details may vary based on product size and color. Need help?

.

A solar charge controller is an essential part of a solar charging system. It stands between the solar panels and the battery bank where it regulates the amount of voltage and current reaching the batteries. A solar charge controller protects your batteries by preventing an electrical overload or.

Solar charge controllers are an invaluable piece of equipment that help maximize solar output in residential and commercial photovoltaic systems, ensuring effective usage of these forms of renewable energy. In this comprehensive guide, we'll discuss essential basics related to solar charge.

Often called a regulator, a solar charge controller is vital for managing the flow of energy from solar panels into the battery. It prevents overcharging, extends battery life, and ensures stable performance. In this guide, we'll explore what solar charge controllers do, the differences between.

Solar charge controllers, solar panel controllers, or solar controllers, are an invaluable piece of equipment that regulates the flow of power from solar panels to the battery in a photovoltaic (PV) system. Solar panel controllers help maximize solar output in off-grid residential and commercial.



Smart Auto Voltage Detection: Auto-detects 12V/24V systems & features dual USB ports (5V/2A) for fast device charging. Track 30-day solar power generation via built-in data recording to optimize solar panel efficiency
Universal Battery Compatibility: Compatible with all 12V/24V batteries.
Choose. What is a solar charge controller?

A charge controller is an electronic device that monitors and controls the amount of power – current and voltage –going to the battery from a solar panel. It's an essential part of most solar systems. Without a solar charge controller, your batteries would get damaged and wouldn't last long because of too much or too little power.

Are solar charge controllers the same as solar charge regulators?

No, the terms "solar charge controller" and "solar charge regulator" are often used interchangeably and refer to the same device. Both terms describe the component of a solar panel system with the function of regulating the charging process to protect the batteries and ensure efficient operation.

What batteries can a solar charge controller charge?

The solar charge controller is compatible with batteries ranging between 12V and 48V, another reason why it's the best for large systems with large batteries. It can charge four types of batteries: Gel, Flooded, Sealed, and User-defined (you can set your battery parameters. Ideal if you have a lithium-ion battery). 4. Easy to Use LCD display.

Do you need a solar charge controller?

Not everyone using solar panels needs a charge controller. Generally, a charge controller is essential in situations involving a significant amount of current, which could overcharge or damage the battery. But if you are using small solar panels that output a limited amount of current and voltage, you likely don't need a solar charge controller.

How do you connect a solar charge controller to a battery?

Run the cables from the solar panel to the solar charge controller, making sure to match the + and - terminals. Then run cables from the solar charge controller to the battery, again being careful to match terminals. The solar charge controller should have clear labeling showing which cables to connect to each port.



Which solar charge controller is best?

Best Bluetooth-Connected Solar Charge Controller: SmartSolar MPPT 100V 30A Charge Controller If you'd like to check your battery or power flow status without having to look at the display on the charge controller or a connected meter, we recommend the SmartSolar Bluetooth-connected MPPT charge controller.



Battery charging regulator solar

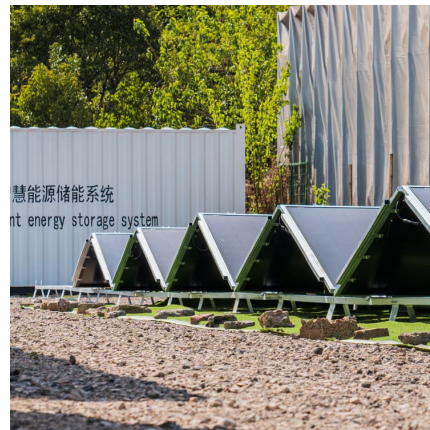


The Ultimate Guide to Solar Panel Charge Regulators: How to ...

Is a solar panel regulator merely a good-to-have or a must-have? Here's how to decide - and which type might be best for your needs.

[Solar Charge Controller 101: A Beginner's Guide](#)

A solar charge controller is an essential part of a solar system that uses batteries. This basic guide explains what it does and why it's important to a solar energy system.



[ECO-WORTHY Solar Charge Controller 30A Solar ...](#)

Smart Auto Voltage Detection: Auto-detects 12V/24V systems & features dual USB ports (5V/2A) for fast device charging. Track 30-day solar power generation via built-in data recording to optimize solar panel efficiency

[What Solar Charge Controller Do I Need for Lithium ...](#)

Integrated solar controllers, with both charging and discharging functions, are suitable for large solar modules and battery systems, which are



more convenient for us to use.

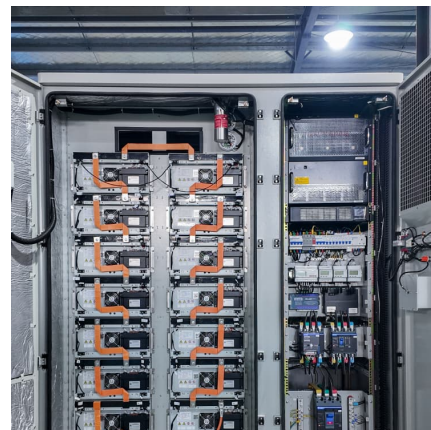


[Choosing the Right Solar Charge Controller for ...](#)

Often called a regulator, a solar charge controller is vital for managing the flow of energy from solar panels into the battery. It prevents overcharging, extends battery life, and ensures stable performance.

Solar Charge Controller: Definition, Importance, and How it Works

A solar charge controller is a smart device that regulates the charging of a solar battery. It controls the incoming power flow from solar panels to the battery, preventing ...



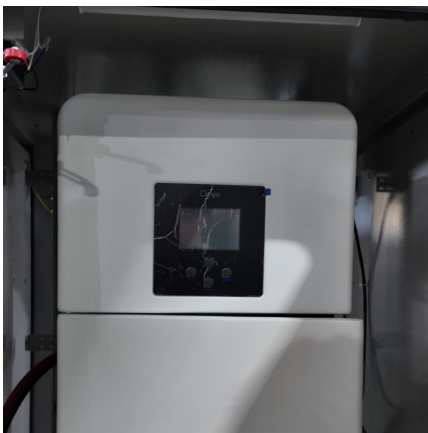
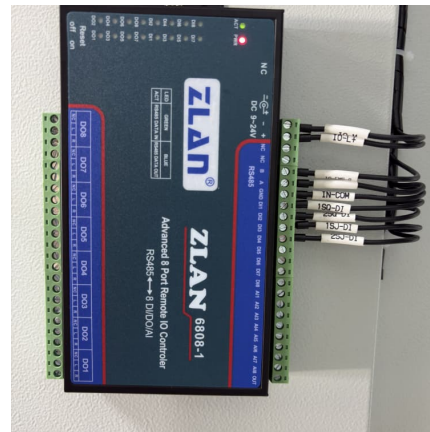
solar charge controllers, solar charging controllers for sale

Renogy provides MPPT Charge Controller, PWM Charge Controller, Solar Charge Controller, Adventurer, Commander, Rover, Voyager, Wanderer solar panel charge controller



ECO-WORTHY Solar Charge Controller 30A Solar Panel Custom Battery

Smart Auto Voltage Detection: Auto-detects 12V/24V systems & features dual USB ports (5V/2A) for fast device charging. Track 30-day solar power generation via built-in data recording to ...

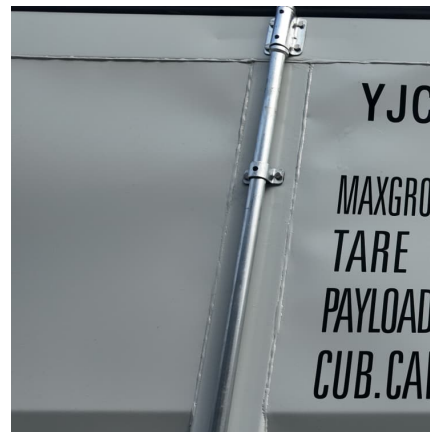


Amazon : Battery Charge Regulator

2PCS 30A PWM Solar Charge Controller, 12V 24V Dual USB Solar Panel Battery Intelligent Regulator with LCD Display, Auto Parameter Adjustable, Timer Setting, Multiple Load Control ...

[7 Best Solar Charge Controllers 2024: Top Picks, Reviews](#)

Renogy provides MPPT Charge Controller, PWM Charge Controller, Solar Charge Controller, Adventurer, Commander, Rover, Voyager, Wanderer solar panel charge ...



[Solar Charge Controller: Definition, Importance, and ...](#)

A solar charge controller is a smart device that regulates the charging of a solar battery. It controls the incoming power flow from solar panels to the battery, preventing overcharging (when the battery receives too much ...



Choosing the Right Solar Charge Controller for Optimal Battery

Often called a regulator, a solar charge controller is vital for managing the flow of energy from solar panels into the battery. It prevents overcharging, extends battery life, and ...



[A Comprehensive Guide on Solar Charge Controllers](#)

A solar charge controller is an essential element in any solar-powered system, whether it be a home or an RV. This gadget regulates the power flow between the solar panel ...

What Solar Charge Controller Do I Need for Lithium Batteries?

Integrated solar controllers, with both charging and discharging functions, are suitable for large solar modules and battery systems, which are more convenient for us to use.





Contact Us

For catalog requests, pricing, or partnerships, please visit:
<https://www.conrad.edu.pl>