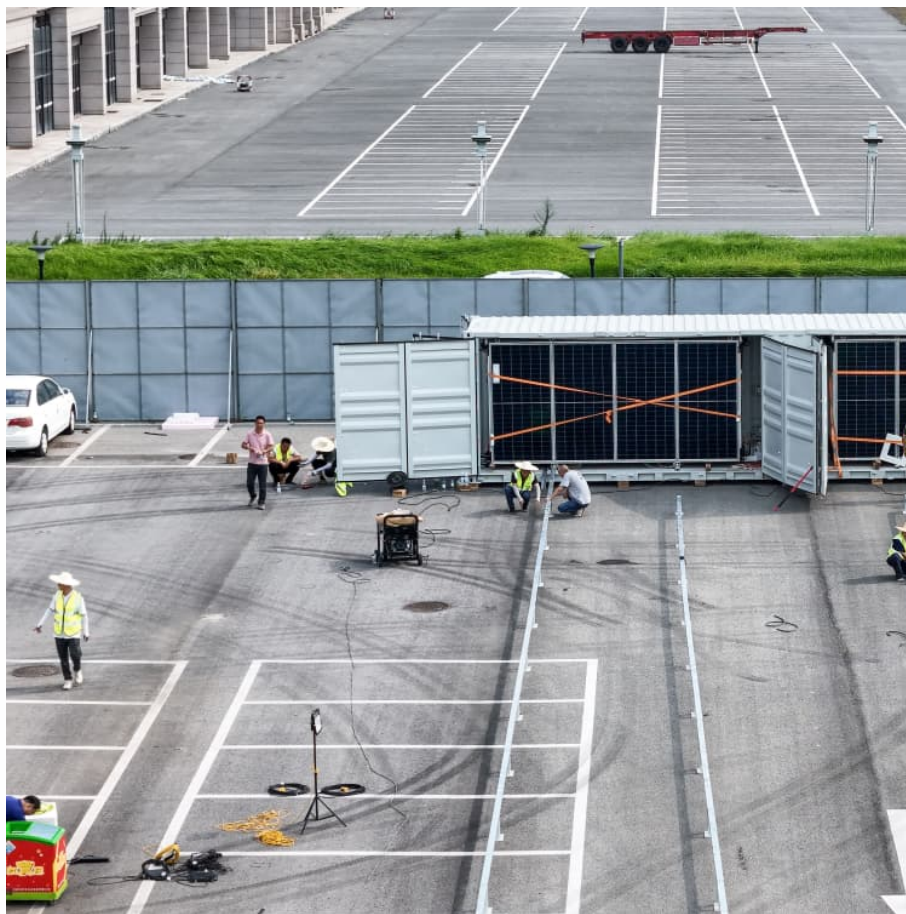


Battery controllr solar panel





Overview

The solar charge controller works by measuring the voltage of the batteries and the solar panels and adjusting the flow of electricity accordingly. When the batteries are fully charged, the controller will reduce the amount of electricity flowing into the batteries to prevent.

The solar charge controller works by measuring the voltage of the batteries and the solar panels and adjusting the flow of electricity accordingly. When the batteries are fully charged, the controller will reduce the amount of electricity flowing into the batteries to prevent.

Solar charge controllers are an invaluable piece of equipment that help maximize solar output in residential and commercial photovoltaic systems, ensuring effective usage of these forms of renewable energy. In this comprehensive guide, we'll discuss essential basics related to solar charge.

Check each product page for other buying options. Price and other details may vary based on product size and color.

A solar charge controller is an essential part of a solar charging system. It stands between the solar panels and the battery bank where it regulates the amount of voltage and current reaching the batteries. A solar charge controller protects your batteries by preventing an electrical overload or.

Solar charge controllers are a critical component in every solar installation. They protect your battery storage components, and they ensure everything runs efficiently and safely throughout the lifespan of your system. **WHAT ARE SOLAR CHARGE CONTROLLERS?**

The charge controller in your solar.

Solar charge controllers, solar panel controllers, or solar controllers, are an invaluable piece of equipment that regulates the flow of power from solar panels to the battery in a photovoltaic (PV) system. Solar panel controllers help maximize solar output in off-grid residential and commercial.



A solar charge controller is an essential part of a solar system that uses batteries. This basic guide explains what it does and why it's important to a solar energy system. What does a charge controller do?

A solar charge controller manages the power going in and out of the batteries in a solar.



Battery controllr solar panel



[Solar Charge Controller Sizing and How to Choose One](#)

The charge controller in your solar installation sits between the energy source (solar panels) and storage (batteries). Charge controllers prevent your batteries from being overcharged by ...

[30 AMP, 24V/12V MPPT Solar Charge Controller](#)

Designed for remote power solar applications, this advanced charge controller can be used with 24 Volt and 12 Volt, lead-acid and AGM batteries, as well as 12 Volt lithium batteries.



[Solar Charge Controller 101: A Beginner's Guide](#)

A solar charge controller is an essential part of a solar system that uses batteries. This basic guide explains what it does and why it's important to a solar energy system.

[Solar Charge Controllers: Choosing, Upgrading, and ...](#)

What is a charge controller? A charge controller is a device used in solar power systems. It manages the flow of power from the solar panels



to the batteries. Its main purpose ...



Solar Charge Controller: Definition, Importance, and How it Works

Solar charge controllers, solar panel controllers, or solar controllers, are an invaluable piece of equipment that regulates the flow of power from solar panels to the battery ...

[ECO-WORTHY Solar Charge Controller 30A Solar ...](#)

Track 30-day solar power generation via built-in data recording to optimize solar panel efficiency
Universal Battery Compatibility: Compatible with all 12V/24V batteries. Choose preset modes (LFP, FLD, SLD, GEL) or customize ...



[Solar Charge Controller: Definition, Importance, and ...](#)

Solar charge controllers, solar panel controllers, or solar controllers, are an invaluable piece of equipment that regulates the flow of power from solar panels to the battery in a photovoltaic (PV) system.



ECO-WORTHY Solar Charge Controller 30A Solar Panel Custom Battery

Track 30-day solar power generation via built-in data recording to optimize solar panel efficiency
Universal Battery Compatibility: Compatible with all 12V/24V batteries. Choose preset modes ...



[Solar Charge Controllers: Choosing, Upgrading, and ...](#)

What is a charge controller? A charge controller is a device used in solar power systems. It manages the flow of power from the solar panels to the batteries. Its main purpose is to prevent the batteries from overcharging.

Contact Us

For catalog requests, pricing, or partnerships, please visit:
<https://www.conrad.edu.pl>