

Battery tender solid red light blinking green light





Overview

If a Battery Tender is flashing red to green, it means that your battery has either reached its 72-Hour Safety Timer and is in maintenance mode – or that the battery is defective. The 72-Hour Safety Timer implies that you are charging a large battery or that there is a connection.

If a Battery Tender is flashing red to green, it means that your battery has either reached its 72-Hour Safety Timer and is in maintenance mode – or that the battery is defective. The 72-Hour Safety Timer implies that you are charging a large battery or that there is a connection.

My battery charger's lights are flashing from red to green - what do I do?

If the lights on your unit are flashing from red to green, we first recommend double-checking the unit on a known good battery. A good example of this is the battery in your everyday vehicle. If the unit goes through the.

Before you can tell if your Battery Tender is charging, you need to check if it is working correctly. To test if your Battery Tender is working, follow these steps: Plug your Battery Tender into an outlet. Connect the alligator clips to your battery terminals. Check the Battery Tender's LED light.

A few things that you will need to be considered when the battery tender charger is blinking red and green light at the same time, or alternatively are: Why Is My Battery Tender Charger Blinking Red And Green?

Review - Deltran Battery Tender Junior - No More Dead Batteries on the Corvette! -.

If a Battery Tender is flashing red to green, it means that your battery has either reached its 72-Hour Safety Timer and is in maintenance mode – or that the battery is defective. The 72-Hour Safety Timer implies that you are charging a large battery or that there is a connection resistance. Car.

A red indicator typically means that the charger is in the initial charging stage, delivering power to the battery. If the light stays red for a prolonged period, it



might indicate a problem with the connection or the battery itself. When the light turns green, it signifies that the battery is.

Disconnect all loads from battery (or battery from vehicle), then reattach Battery Tender PLUS. Wait no more than 3 seconds for solid red light. Red light keeps flashing. Charger is not properly connected to the battery: rings or clamps are hooked up backwards. Check the electrical connections and. What does a red light on a battery tender mean?

A red light means charging is in progress, while a green light indicates that the battery is fully charged and the charger is in float mode. Additionally, you can use a multimeter to check the battery's voltage during the charging process. What should I do if my Battery Tender is not showing any lights?

.

What does a battery tender indicator light mean?

Flashing red: not charging battery Solid red: battery charging Flashing green: battery greater than 80 percent charged Solid green: monitoring charged battery This light guide applies to the core line of Battery Tender products, so please check your chargers manual for specific lighting instructions. FAQs about Battery Tender indicator lights.

Why is my battery flashing red and green?

This usually happens when the battery is too hot or too cold when you plug the charger in. If the red flashing light transforms to green and red lights simultaneously, it indicates an underlying problem. But, if the flashing red light stops and the green light starts flashing, the battery is charging.

What does a green light mean on a battery tender?

Also, if the green light keeps flashing while the red light stays on, it indicates that the battery is more than 80% charged and is ready to use. You can also wait a few more minutes for the battery to be fully charged, as indicated by the green light turning solid green. How Long Does It Take for the Battery Tender to Turn Green?

.

Why is my battery tender Charger blinking?



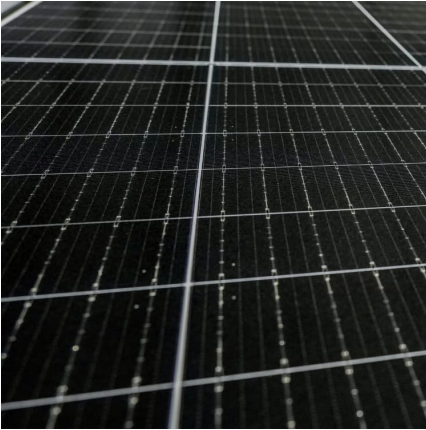
This is pretty simple for sure, and with that, you get to enjoy the perfection of having the fully charged battery as well at the same time. If the red and green lights on your Battery Tender charger are blinking together, that means your charger is connected to the AC power, but it is not connected to the battery properly.

Why does my battery tender turn green?

If the connection is secure, but the battery tender continues flashing green and never turns solid green, it may be time to replace the battery charger. If the battery tender green light stays on, it indicates that the battery is fully charged, and you can unplug the charger. However, you can also leave the battery connected to the tender.



Battery tender solid red light blinking green light



My Battery Tender Flashes Red To Green - What Does That Mean?

If a Battery Tender is flashing red to green, it means that your battery has either reached its 72-Hour Safety Timer and is in maintenance mode - or that the battery is defective.

How To Tell If Battery Tender Is Charging? , Battery ...

Flashing green light: Your Battery Tender is charging your battery. Solid green light: Your Battery Tender has finished charging your battery and is now maintaining it.



[Battery Tender® Lights and What They All Mean](#)

Solid red: battery charging
Flashing green: battery greater than 80 percent charged
Solid green: monitoring charged battery
This light guide applies to the core line of Battery Tender products, ...

What Does the Battery Tender Flashing Green Light Mean? A ...

In this article, I'll unravel the mystery behind the flashing green light, so you can confidently interpret what your Battery Tender is trying to



tell you. Understanding these signals not only ...



What does it mean when battery tender is flashing green and red?

When a battery tender is flashing green and red, it means that the voltage on the battery the tender is attached to is either too high or too low. This can indicate that the battery is not ...

Why Is My Battery Tender Charger Blinking Red And Green?

If the red and green lights on your Battery Tender charger are blinking together, that means your charger is connected to the AC power, but it is not connected to the battery ...



What Does A Flashing Green Light In A Battery Tender Mean? , Battery ...

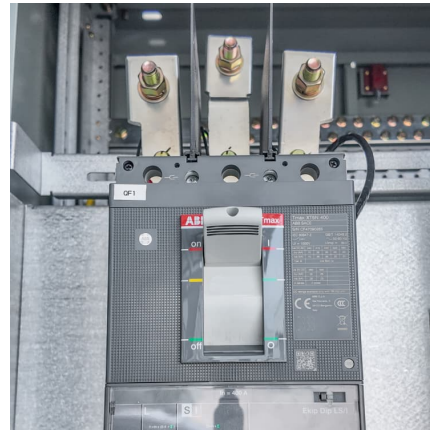
If everything is feasible, leave the battery on charge until the green light is solid. When the green light begins to show, it will continue until the battery charger output current falls below the ...





[What Does the Battery Tender Flashing Green Light ...](#)

In this article, I'll unravel the mystery behind the flashing green light, so you can confidently interpret what your Battery Tender is trying to tell you. Understanding these signals not only prolongs your battery's life but also saves you from ...



My Battery Tender Flashes Red To Green - What Does That Mean?

A red light means charging is in progress, while a green light indicates that the battery is fully charged and the charger is in float mode. Additionally, you can use a multimeter ...

[Battery Tender Flashing Red/Green/Yellow/Orange Lights](#)

But, if the flashing red light stops and the green light starts flashing, the battery is charging. The best way to fix the problem of the battery tender not turning green is by taking the battery out to ...



[Battery Tender Flashing Red/Green/Yellow/Orange ...](#)

But, if the flashing red light stops and the green light starts flashing, the battery is charging. The best way to fix the problem of the battery tender not turning green is by taking the battery out to cool down for at least half an hour before ...



How To Tell If Battery Tender Is Charging

A red light means charging is in progress, while a green light indicates that the battery is fully charged and the charger is in float mode. Additionally, you can use a multimeter ...



How To Tell If Battery Tender Is Charging? , Battery Tools

Flashing green light: Your Battery Tender is charging your battery. Solid green light: Your Battery Tender has finished charging your battery and is now maintaining it.

What Does A Flashing Green Light In A Battery ...

If everything is feasible, leave the battery on charge until the green light is solid. When the green light begins to show, it will continue until the battery charger output current falls below the optimum recharge threshold or until the ...





Contact Us

For catalog requests, pricing, or partnerships, please visit:
<https://www.conrad.edu.pl>