

Berlin water storage project





Overview

Scientists from the Georesearch Center in Potsdam is evaluating the subsurface in the locality of Adlershof in Berlin, Germany for a proposed aquifer thermal storage project. Test drilling has so far been done to a depth of 450 meters, accessing sandstone suitable for water storage.

Scientists from the Georesearch Center in Potsdam is evaluating the subsurface in the locality of Adlershof in Berlin, Germany for a proposed aquifer thermal storage project. Test drilling has so far been done to a depth of 450 meters, accessing sandstone suitable for water storage.

So the city has come up with solutions for how to collect and store rainwater, turning Berlin into a sponge city. Berlin is located in a dry region of Germany, and water supply is a hot topic each summer. That's why the city is adopting measures to absorb and store rainwater like a sponge and.

Germany's largest heat accumulator is expected to be commissioned at the start of next year. The heat storage is located on Vattenfall's site at the Reuter West CHP plant in Berlin and is now being filled with a water volume of around 350,000 bathtubs. At 45 metres high, with a diameter of 43.

SUEZ & Arup are among the big companies helping cities including Berlin become a 'sponge city' to reduce wastewater discharges and improve water supply Urban areas are particularly vulnerable to flash floods. Concrete and tarmac do not let water through easily, preventing it from being absorbed.

Scientists from the Georesearch Center in Potsdam is evaluating the subsurface in the locality of Adlershof in Berlin, Germany for a proposed aquifer thermal storage project. Test drilling has so far been done to a depth of 450 meters, accessing sandstone suitable for water storage. The thermal.

Swedish public utility Vattenfall is about to start filling a 45m-high, 200MW-rated thermal energy storage facility with water in Berlin, Germany. The heat storage tank can hold 56 million litres of water which will be heated at 98 degrees celsius and will be combined with the existing.



Um die Dekarbonisierung ihrer Fernwärme voranzutreiben, setzt die BTB auf eine weitere Innovation: Im Rahmen eines Forschungsprojektes wird im Energiepark Berlin-Adlershof ab 2024 ein rund 400 Meter tiefer Aquiferspeicher gebaut, der mit einem innovativen Wärmepumpensystem kombiniert wird. Im. How does Berlin manage its water resources?

Berlin has implemented several measures to manage its water resources. In 2018, the city and BWB founded the Rainwater Agency to reduce the amount of rainwater flowing into the sewers, encouraging its absorption into the ground or reuse instead.

How much water does Berlin's sewage system hold?

At 30 meters (98.4 feet) deep in the ground, the circular concrete basin will hold nearly 17,000 cubic meters of rainwater once it's completed by 2026. That's equivalent to almost seven Olympic-sized swimming pools. When there's heavy rain and Berlin's sewage system is at risk of running over, surplus water is stored in the basins.

Does Berlin have a water management problem?

Berlin has taken steps to address its water management challenges. The city's water utility, Berliner Wasserbetriebe (BWB), already reintroduces treated wastewater into surface water sources, which is then recaptured downstream through bank filtration.

Can rainwater flow into a sewage system in Berlin?

The city of Berlin has passed a law stipulating that only a small amount of rainwater on a new building properties can flow into the sewage system. The rest has to either evaporate or seep into the ground. For example, a new apartment block was recently built with a large pond that collects rainwater.

What is Berlin's water master plan?

Berlin's "Water Master Plan" aims to secure the drinking water supply, improve water protection, and expand wastewater management. 32 measures – but what are the consequences?

.

Why does Berlin have a water shortage?



In its early years, Berlin was built on a swamp, and the challenge was getting rid of excess rainfall. Today, however, water scarcity is a growing problem, worsened by climate change. In 2019 and 2020, the flow of the Spree and Havel was halved, and in 2023, parts of the Panke River dried up completely.



Berlin water storage project

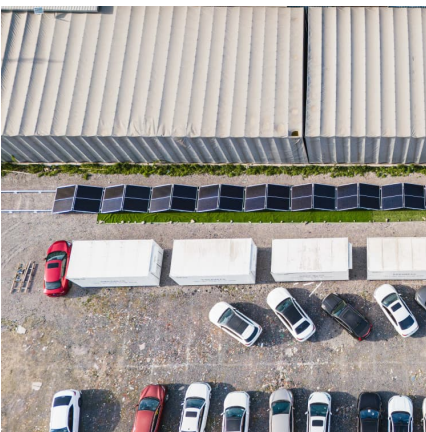


AQUIFER THERMAL ENERGY STORAGE FOR THE ...

uildings in the Spree river curve in Berlin, focusing on the high utilisation of the primary energy. Vegetable-oil fired block type cogeneration units and the integration of one aquifer heat and

Home

Berliner Wasserbetriebe has been supplying Berlin with drinking water and treating its wastewater for a long time. Today we secure the drinking water supply for all Berliners and treat the ...



Aquifer Thermal Storage Project Planned in Berlin, Germany

Scientists from the Georesearch Center in Potsdam is evaluating the subsurface in the locality of Adlershof in Berlin, Germany for a proposed aquifer thermal storage project. ...

Heat from the depths of the earth

In a pilot project that is one of its kind in Germany, BTB GmbH, an energy provider, wants to make district heating supply more climate-friendly by integrating a seasonal ...



NOTICE SWD Water Main

Berlin Street, Lacey Road, and Ceella Drive as part of a water main replacement project installing a new water main. Starting as soon as September 15th of this year, Ludlow will begin ...



Research borehole for ATEs successfully completed in Berlin ...

BTB is building Berlin's largest heat storage facility at the Berlin Adlershof site as part of the 'Reallabor GeoSpeicher Berlin' project in cooperation with the GFZ and TU Dresden. The ...



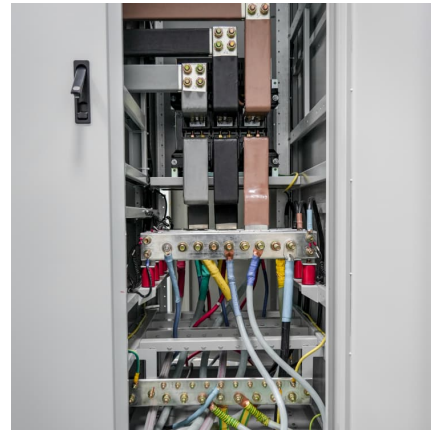
An Aquifer Thermal Storage Project Proposed in Adlershof, Berlin

Scientists from the Georesearch Center in Potsdam are evaluating the subsurface in Adlershof, Berlin for an aquifer thermal storage project. The project aims to ...



An Aquifer Thermal Storage Project Proposed in Adlershof, Berlin

Energy Portal EU Summary Scientists from the Georesearch Center in Potsdam are evaluating the subsurface in Adlershof, Berlin for an aquifer thermal storage project. The ...



16 old water towers of Berlin , Slava Shestopalov , 5 ...

A collection of beautiful water towers in Berlin. The towers belong to the Modernism, Historicism, and Art Nouveau (Jugendstil) styles.

[Balmoral Water Storage Facility and Fish Screen](#)

Project summary A project to: construct and operate a ring dam providing approximately 10 million cubic metres of water storage for Amuri Irrigation Company Limited's irrigation scheme. install ...



Reichstag Berlin

Reichstag Berlin , KBP Ingenieure designs sustainable technical building equipment for the ecological project with renewable energy sources, such as a biodiesel cogeneration plant and ...



[Vattenfall starts filling up 200MW thermal storage ...](#)

The tower in Berlin. Image: Vattenfall. Swedish public utility Vattenfall is about to start filling a 45m-high, 200MW-rated thermal energy ...



[AQUIFER THERMAL ENERGY STORAGE FOR THE ...](#)

uildings in the Spree river curve in Berlin, focusing on the high utilisation of the primary energy. Vegetable-oil fired block type cogeneration units and the integration of one aquifer heat and

[Vattenfall starts filling up 200MW thermal storage ...](#)

Swedish public utility Vattenfall is about to start filling a 45m-high, 200MW-rated thermal energy storage facility with water in Berlin, Germany. ...



[Aquifer thermal storage project planned in Berlin.](#)

An aquifer thermal storage project has been proposed to stabilize energy supply from a heat pump facility in Adlershof in Berlin, Germany.



[Aquifer thermal energy storage for the Berlin ...](#)

Download Citation , Aquifer thermal energy storage for the Berlin Reichstag Building: New seat of the German Parliament , According to the ...



List of energy storage power plants

The 150 MW Andasol solar power station is a commercial parabolic trough solar thermal power plant, located in Spain. The Andasol plant uses tanks of molten ...

Aquifer thermal storage project planned in Berlin, Germany

The thermal storage project will complement a heat pump facility being run by district heating provide BTB in the area of Schöneeweide. The heat pumps draw water from the ...



[A REFLOW CASE STUDY Is Berlin getting into hot ...](#)

In a city like Berlin, with a population of 3.6 million people, vast amounts of wastewater were being produced from both private households and industry. Much of the wasted water was still warm ...



Potsdamer Platz, Berlin, Germany

The level of the urban lake may be changed by 30 cm, which corresponds to a storage capacity of 3500 m³ and 17% of the annual precipitation. Advanced technology controls the constant ...



Berlin Energy Storage Container: The Future of Renewable ...

Ever wondered how Berlin is tackling energy storage challenges while phasing out fossil fuels? Enter the Berlin Energy Storage Container--a game-changer in renewable energy integration.

...



Potsdamer Platz, Berlin

Start of Project: 1994 / End of Project: 1998
Water
The following measures are implemented for the management of 23.000 m³ rainwater of 19 buildings per year: o extensively and intensively

...



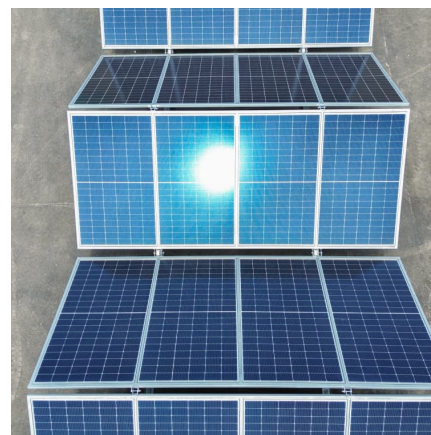


Water Control / Berlin, CT

On-going major projects include a 4-million-dollar infiltration/inflow sewer lining project, rehabilitation of both our Elton Rd pump station and sanitary sewer lift ...

[Integrated sewage management to reduce pollution ...](#)

Simulation tools help develop an integrated approach for Berlin's combined sewage system in which sewage overflows pose risk to groundwater and ...



Vattenfall Starts Filling Up 200MW Thermal Storage Tower in Berlin

Swedish public utility Vattenfall is about to start filling a 45m-high, 200MW-rated thermal energy storage facility with water in Berlin, Germany.

Berlin to purchase Meriden water during emergencies, repairs

Berlin is building a connection to the Meriden line on North Colony Road that will be used when the Lamentation tank is repaired and in emergencies.



Contact Us

For catalog requests, pricing, or partnerships, please visit:
<https://www.conrad.edu.pl>