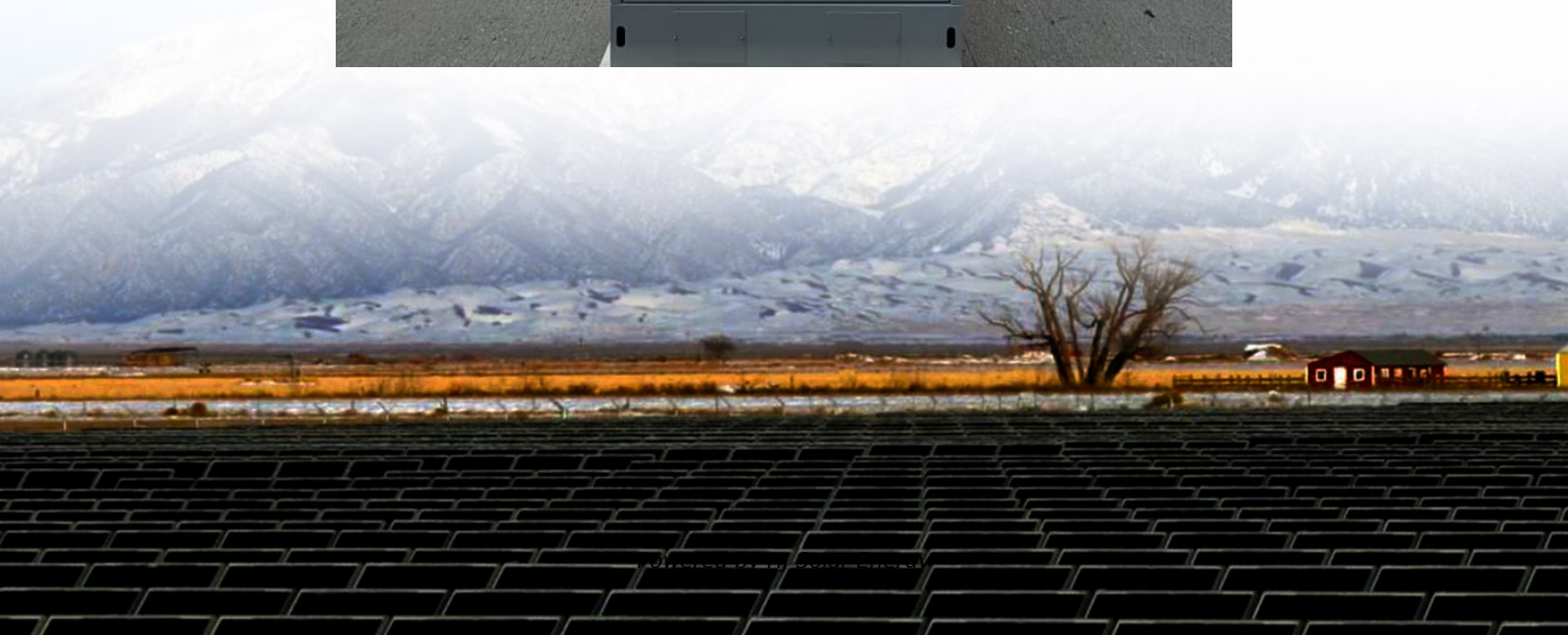


Best battery for 200w solar panel





Overview

Generally, for a 200 watt solar panel, you need 12v 100Ah lithium or 12v 200Ah lead-acid battery. For your convenience, here's a chart with recommended battery sizes for a 200-watt solar panel in different states.

Generally, for a 200 watt solar panel, you need 12v 100Ah lithium or 12v 200Ah lead-acid battery. For your convenience, here's a chart with recommended battery sizes for a 200-watt solar panel in different states.

Generally, for a 200 watt solar panel, you need 12v 100Ah lithium or 12v 200Ah lead-acid battery. For your convenience, here's a chart with recommended battery sizes for a 200-watt solar panel in different states. Note: This calculation is based on the number of peak sun hours your state receives.

A 200W solar panel offers various power applications from small fridges to laptops and smaller devices. But, to take advantage of the power this panel can generate in a day, you should have a battery attached. You can use a single 100ah lithium-ion battery or two 100ah lead-acid batteries wired in.

For those using a 200-watt solar panel, you first need to answer the question: How many batteries do I need for a 200 watt solar panel?

When using a solar panel 200 watt 12 volt, the perfect match of battery you can use is a 12-volt 40Ah 500-watt-hours battery. That said, when it comes to the.

It provides a breakdown of how to calculate the number and size of batteries needed for a 200-watt 12V solar panel array, emphasizing that bigger batteries aren't always better due to longer charging times. The article outlines steps to calculate daily energy use, convert watt-hours to amp-hours.

After reviewing dozens of solar batteries, CNET has named the Bluetti EP900 Home Battery Backup as the best pick for 2025, bumping the Tesla Powerwall from the top spot. It impressed us with strong performance, a solid warranty, a modular design and clear pricing. But keep in mind, this ranking is.



Our LiFePO4 battery provides 2500 - 7000 cycles & a 10 years lifetime with built-in Battery Management System (BMS) protects it from overcharge, deep discharge, overloading, overheating and short circuit, and excessive low self-discharge rate ensuring up to 1 year maintenance-free storage. Built-in. What battery do I need for a 200 watt solar panel?

And the power output of the solar panels will depend on how many peak sun hours your location receives. Which I'll explain in a moment. Generally, for a 200 watt solar panel, you need 12v 100Ah lithium or 12v 200Ah lead-acid battery. For your convenience, here's a chart with recommended battery sizes for a 200-watt solar panel in different states.

How much would 200W solar panels & batteries cost?

For a fixed panel, you would be looking at around \$230, while the portable ones would cost about \$430, while a sealed lead-acid battery would be around \$130, with a lithium-ion battery priced at around \$200. As demand for lithium-ion batteries grows, they are becoming cheaper.

Can a 200W solar panel use a lithium ion battery?

You can use a single 100ah lithium-ion battery or two 100ah lead-acid batteries wired in parallel with a 200W solar panel. The best battery for a 200W solar panel would be a 100ah lithium-iron battery. Lithium-ion batteries would be superior in terms of lifespan and performance.

How many amps can a 200 watt solar panel produce?

This means that a 200-watt solar panel will likely produce 60-70 amp-hours per day. If we use the above example's 225 Ah 12 V battery as our battery of choice going forward, one 200-watt solar panel will not be enough to fully charge this battery in one day, especially if you decide to go with two batteries.

Can a 200 watt solar panel charge a 12 volt battery?

A 200W solar panel will fully charge a 12v 100Ah battery from 100% depth of discharge in about 7.5 peak sun hours. How fast will a 200-watt solar panel charge a 12-volt battery?

A 200-watt solar panel will take anywhere between 5-15 peak sun hours to charge fully charge a 12v battery. The difference will depend on the size and type of battery.

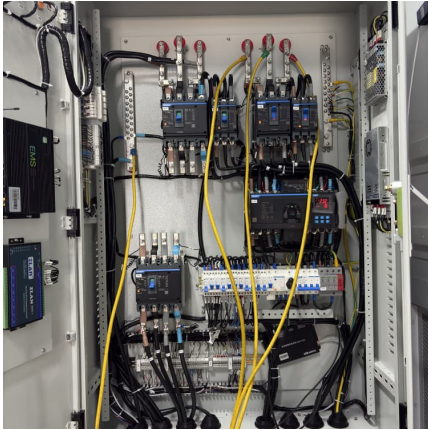


What size battery do I need for a solar panel?

What size battery you need, will depend on the total power production of your solar panels. And the power output of the solar panels will depend on how many peak sun hours your location receives. Which I'll explain in a moment. Generally, for a 200 watt solar panel, you need 12v 100Ah lithium or 12v 200Ah lead-acid battery.



Best battery for 200w solar panel

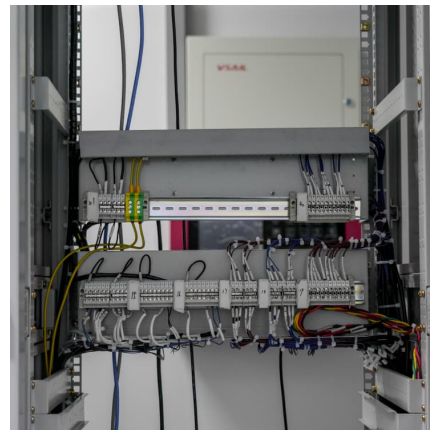


[Battery For 200W Solar Panel \(What You Need\)](#)

You can use a single 100ah lithium-ion battery or two 100ah lead-acid batteries wired in parallel with a 200W solar panel. The best battery for a 200W solar panel would be a ...

Best Solar Batteries of 2025

Best Solar Batteries of 2025 A good solar battery doesn't just save energy -- it saves the day when the lights go out. Check out CNET's favorite picks for reliable backup power.



How Many Batteries Can a 200 Watt Solar Panel Charge for ...

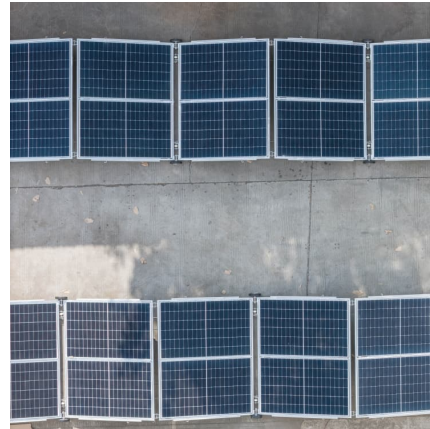
Choosing the right batteries for your solar power setup ensures you get the most out of your 200-watt solar panel. Consider the types of batteries available and their capacity ...

[How Many Batteries Do I Need for a 200 Watt Solar ...](#)

When using a solar panel 200 watt 12 volt, the perfect match of battery you can use is a 12-volt 40Ah 500-watt-hours battery. That said, when it



comes to the number of battery storage for your requirements, you need to ...



How Many Batteries Do I Need for a 200 Watt Solar Panel?

That is why we are here to give you a breakdown of how many batteries you will need for a 200-watt 12V solar panel, what type of batteries are best, and what other devices you might need ...

[What Size Battery for 200W Solar Panel? \(Explained!\)](#)

And the power output of the solar panels will depend on how many peak sun hours your location receives. Which I'll explain in a moment. Generally, for a 200 watt solar ...



[How to match 200w solar energy with battery . NenPower](#)

WHAT TYPE OF BATTERY IS BEST FOR A 200W SOLAR SYSTEM? When selecting a battery for a 200-watt solar system, options generally include lead-acid and lithium ...



[ExpertPower 200W 12V Solar Power Kit , 12V 20Ah...](#)

Our LiFePO4 battery provides 2500 - 7000 cycles & a 10 years lifetime with built-in Battery Management System (BMS) protects it from overcharge, deep discharge, overloading, overheating and short circuit, and excessive low self ...



How Many Batteries Do I Need for a 200 Watt Solar Panel?

When using a solar panel 200 watt 12 volt, the perfect match of battery you can use is a 12-volt 40Ah 500-watt-hours battery. That said, when it comes to the number of battery ...

ExpertPower 200W 12V Solar Power Kit , 12V 20Ah LiFePO4 Lithium Battery

Our LiFePO4 battery provides 2500 - 7000 cycles & a 10 years lifetime with built-in Battery Management System (BMS) protects it from overcharge, deep discharge, overloading, ...



What Size Battery for a 200W Solar Panel? A Practical Guide for ...

Choosing the right size battery for your 200w solar panel isn't just math homework; it's like finding the perfect dance partner for your renewable energy system.



Contact Us

For catalog requests, pricing, or partnerships, please visit:
<https://www.conrad.edu.pl>