

Bose soundlink mini 2 battery light solid red





Overview

De LED-status wordt aangegeven door de LED-statusindicator op de speaker. De LED-statusindicator kan variëren afhankelijk van het feit of het systeem is aangesloten. De LED-statusindicator kan ook variëren afhankelijk van de USB-status. De LED-statusindicator kan ook variëren afhankelijk van de USB-status. De LED-statusindicator kan ook variëren afhankelijk van de USB-status.

De LED-status wordt aangegeven door de LED-statusindicator op de speaker. De LED-statusindicator kan variëren afhankelijk van het feit of het systeem is aangesloten. De LED-statusindicator kan ook variëren afhankelijk van de USB-status. De LED-statusindicator kan ook variëren afhankelijk van de USB-status. De LED-statusindicator kan ook variëren afhankelijk van de USB-status.

If the battery status indicator light on your product always glows red and does not change color after it has been charging for a while, try the following:
Controleer of de accu-LED-status wordt aangegeven. De accustatusindicator kan variëren afhankelijk van het feit of het systeem is aangesloten.

Disconnect and reconnect the speaker to the charging cradle. The bottom of the speaker may not be connecting properly with the metal contacts on the charging cradle. Try removing the speaker and inspect the metal contacts. If you suspect the contacts may be dirty, disconnect the speaker and cradle.

De LED-status wordt aangegeven door de LED-statusindicator op de speaker. De LED-statusindicator kan variëren afhankelijk van het feit of het systeem is aangesloten. De LED-statusindicator kan ook variëren afhankelijk van de USB-status. De LED-statusindicator kan ook variëren afhankelijk van de USB-status. De LED-statusindicator kan ook variëren afhankelijk van de USB-status.

On your keyboard, press "o", "p", "t", up arrow, down arrow. How often do you use it and how old is it?

I had a soundlink mini do that because the battery died after a few years. Lithium ion rechargeable batteries only have a certain life before they become unchargeable. It's the same thing that.



Always stopped right away and showed the continuous red light, which made it impossible to: (Soft reset/shipping mode didn't do shit too) The seller told me they were only charging it with their Powerbank (idk why), and after unsuccessfully trying 5 combinations of working powerbricks and cables.

My Soundlink Mini II shows the red battery light. I've tried everything: -Firstly, I connect the speaker to AC power (Tried every of the following steps with the bose provided usb cable and with a generic usb one) -Holding the function button for 10 seconds only makes the battery light blink in a.



Bose soundlink mini 2 battery light solid red



Solution to "SOLID red light, not charging" for SoundLink mini 2 : r/bose

The difference is that I had power outage last night and it seemed to have killed my soundlink mini. It's a solid red light as well. I tried multiple chargers and powerbanks and ...

Soundlink Mini II red light : r/bose

My sound link 2, which was always plugged in, had a continual red light with intermittent beeping one morning when charging in either port (or the suggested "dual port") - It ...



Soundlink Mini II red light : r/bose

My sound link 2, which was always plugged in, had a continual red light with intermittent beeping one morning when charging in either port (or the suggested "dual port") - It refused to start ...

Solution to "SOLID red light, not charging" for SoundLink mini 2 : ...

The difference is that I had power outage last night and it seemed to have killed my soundlink mini. It's a solid red light as well. I tried multiple



chargers and powerbanks and still have a solid ...

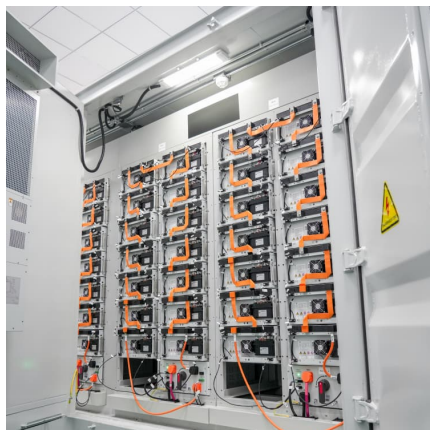


Technical issue with my Bose Mini Soundlink II: Solid red light ...

Lithium ion rechargeable batteries only have a certain life before they become unchargeable. It's the same thing that happens to an old phone, it just won't hold a charge ...

[Bose SoundLink Mini Red Light Flashing \(Quick Fixes\)](#)

A red flashing light on your Bose SoundLink Mini speaker usually indicates that the battery level is low and requires immediate charging. Connecting the speaker to a charger will often resolve the issue.



My soundlink mini won't charge, the battery indicator is flashing red

Press and hold down the centre "multifunction" button (the button with 3 dots) for at least 10 seconds, you should see all of the LEDs light up, this resets the speaker.

??????????????



??????????,???????? Bose ???????????
????????????????????????????????????
????????????????,????? ...



Technical issue with my Bose Mini Soundlink II: Solid red light ...

Lithium ion rechargeable batteries only have a certain life before they become unchargeable. It's the same thing that happens to an old phone, it just won't hold a charge anymore. At that point ...

[Bose SoundLink Mini Red Light Flashing \(Quick Fixes\)](#)

A red flashing light on your Bose SoundLink Mini speaker usually indicates that the battery level is low and requires immediate charging. Connecting the speaker to a charger ...



Contact Us

For catalog requests, pricing, or partnerships, please visit:
<https://www.conrad.edu.pl>