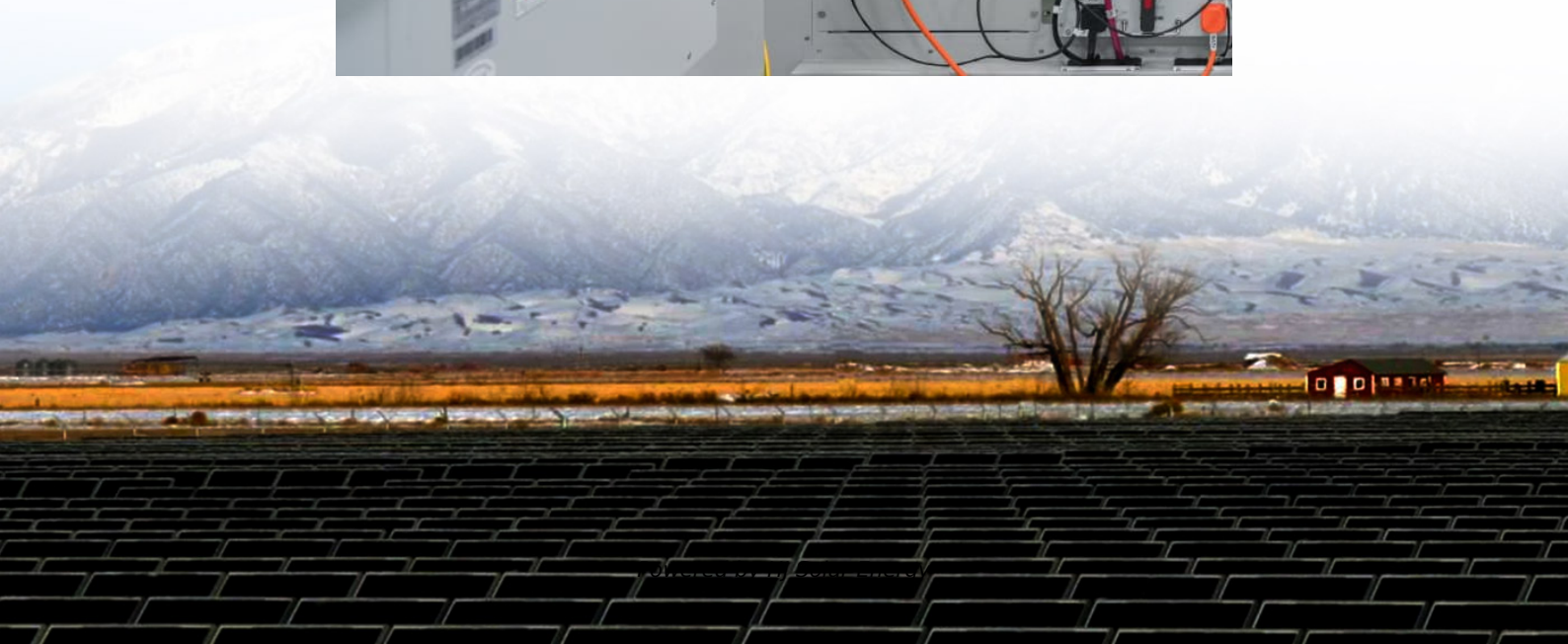


Can solar panels be directly connected to a battery





Overview

Can you connect a solar panel to a battery?

Although you can directly connect a solar panel to a battery, don't do it without a charge controller that regulates the amount of electrical charge your battery gets. By installing a charge controller, you will avoid damage to your solar system, and the battery is one of the most expensive parts of your equipment.

What happens if you connect solar panels directly to a battery?

Connecting solar panels directly to a battery could overcharge and damage it, as solar panels generate up to 20 volts, which is higher than the 12 volts required by a battery.

Can I connect multiple solar panels to one battery system?

A: Yes, you can connect multiple solar panels to one battery system, but make sure to use a compatible charge controller to handle the additional power. Q: How long does it take to charge a battery with solar panels?

A: The charging time depends on the battery capacity, solar panel output, and sunlight availability.

How do I connect a battery to a solar panel?

To connect a battery to a solar panel, link the battery controller to the solar panel. Run the line from the panel to the controller. Depending on your setup, an extension cord may be required to connect the components. Once connected, activate the inverter to convert DC to AC and clamp it to the battery.

How does a solar panel charge a battery?

When a solar panel is connected to a battery, the solar panel's current is transmitted into the battery to charge it. The battery uses this current to store



energy and can also use it to power appliances and other devices. If the solar panel is directly connected to the battery, all of the current goes into the battery. A 12V battery requires only 12 volts, at most 14.4V, to charge.

Can a lithium battery be connected to a solar panel?

Fortunately, lithium batteries have a built-in battery management system (BMS) that protects the battery pack from overcharging and overvoltage. Therefore, the risk of damaging a lithium battery is low. Nevertheless, it's still not advisable to directly connect a lithium battery to a solar panel.



Can solar panels be directly connected to a battery

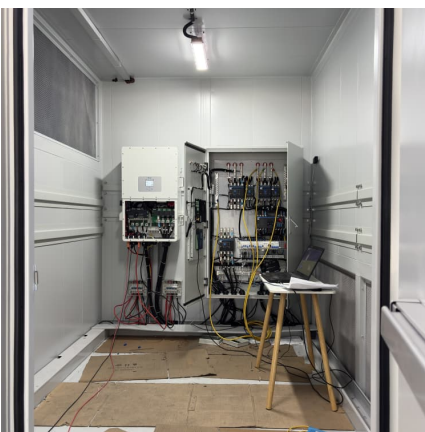


Can I Connect a Solar Panel Directly to a Battery for Efficient ...

This article explores whether you can connect a solar panel directly to a battery, covering essential benefits and challenges. Learn about the types of batteries suitable ...

[Can I Connect Solar Panel Directly To Battery?](#)

You're interested in solar energy and you want to know if you can connect a solar panel directly to a battery. The answer is no - connecting a solar panel directly to a battery can ...



Can I Connect Solar Panel Directly To Battery? [Should I Do It?]

Connecting a solar panel directly to a battery will almost certainly result in too much voltage being passed from the panel to the battery. When excess power passes from a ...

Can a Solar Panel Be Connected Directly to a Battery: Key ...

Connecting a solar panel directly to a battery is feasible, but it requires careful consideration of various factors. Understanding the benefits and



potential risks can help you ...



[Can You Connect Solar Panels Directly to Battery?](#)

A solar panel generates up to 20 volts, which is higher than the 12 volts required by a battery. Connecting the solar panels directly to the battery could overcharge and damage the battery.



Can I Connect Solar Panel Directly to Battery? Exploring Green Energy

Yes, you can connect a solar panel directly to a battery. However, to prevent the battery from overcharging or damage, it is advisable to use a charge controller in between the ...



[Can I Connect Solar Panel Directly to Battery?](#)

Yes, you can connect a solar panel directly to a battery. However, to prevent the battery from overcharging or damage, it is advisable to use a charge controller in between the solar panel and battery. This device ...





How to Hook Up a Solar Panel to a Battery: A Step-by-Step Guide

By following these steps, you can easily hook up a solar panel to a battery system, making your home more energy-efficient and prepared for power outages. Solar ...



[Can you connect solar panels directly to a battery?](#)

Connecting your solar panels directly to a battery is possible but not advisable. In an emergency, this will only work for smaller systems (12V battery and solar panel below ...

Can I Connect a Solar Panel Directly to a Battery? A DIY Guide ...

No, it is not advisable to connect a solar panel directly to a battery without a charge controller. Connecting a solar panel to a battery without a charge controller can lead to ...



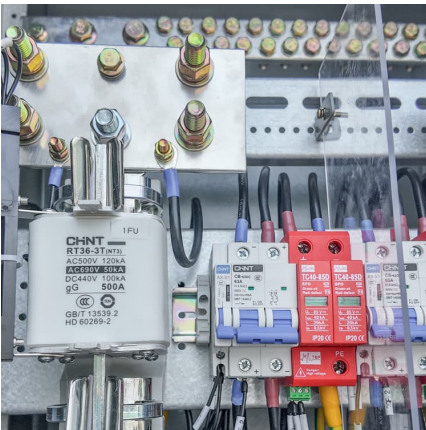
[Can I hook up a solar panel directly to a battery](#)

A: Yes, you can connect a solar panel directly to a battery, but it is important to match the voltage of the solar panel to the battery voltage. Additionally, using a charge controller is highly recommended to prevent ...



[Can I Connect Solar Panel Directly To Battery?](#)

Connecting a solar panel directly to a battery will almost certainly result in too much voltage being passed from the panel to the battery. When excess power passes from a solar panel to a battery, the excess power ...



Can I Connect a Solar Panel Directly to a Battery for Efficient Energy

This article explores whether you can connect a solar panel directly to a battery, covering essential benefits and challenges. Learn about the types of batteries suitable ...

[Can I hook up a solar panel directly to a battery](#)

A: Yes, you can connect a solar panel directly to a battery, but it is important to match the voltage of the solar panel to the battery voltage. Additionally, using a charge ...





Contact Us

For catalog requests, pricing, or partnerships, please visit:
<https://www.conrad.edu.pl>