

# **Cartek xr solid state battery isolator kit**





## Overview

---

What is a Cartek XR battery isolator?

The Cartek XR Battery Isolator is a compact, solid-state electrical master switch that can be mounted close to the battery. It is triggered by a push button switch which can be remote-mounted in the location specified by the rules. Cartek isolators are designed to meet FIA and MSA requirements for electrical master kill switches.

What is the XR battery isolator?

The XR Battery Isolator is the latest generation of motorsport master-switch devices from CARTEK. At 30% smaller size and 40% lighter weight than the previous 'standard' and GT isolators, this XR version offers even more benefits and performance when compared with traditional mechanical master-switches and electro/mechanical safety cut-outs.

Who uses a solid state battery isolation system?

At Cartek we have been producing the Solid State Battery Isolator for over 10 years now, and is now widely used by OEM Manufacturers. Our Battery Isolator Systems are fully sealed and have NO moving parts meaning you can always rely on our kits to work in the tough environments of motorsport. Cartek supply many manufacturers across the world.

How does the new battery isolation XR work?

The new Battery Isolator XR also features a 0.5 sec time delay between transmitting the engine kill signal and disconnecting the battery allowing ECUs time to perform a shutdown sequence before electrical power is lost.

How does a solid state isolator work?

The Solid State Isolator contains two isolation circuits. The first breaks the connection between the negative side of the vehicle's battery from chassis/earth, thereby isolating the battery power from all electrical circuits,



while the second cuts power to the engine electrics and thereby stops the engine from running. GT or XR?



## Cartek xr solid state battery isolator kit

---



### [Battery Isolators , CARTEK Motorsport Electronics](#)

The Battery Isolator XR is a smaller version of the Battery Isolator GT. Designed with a 5 pin Binder connector this Battery Isolator is suited for race cars fitted with motorsport ECU's/PDMs.

### **Buy Cartek XR Solid State Battery Isolator , Demon Tweaks**

Built using solid state technology the XR battery cut off has no moving parts so is not effected by shock or vibration. The unit is also totally sealed against water and dirt making them ideal for ...



### **Cartek XR Battery Isolator Kit**

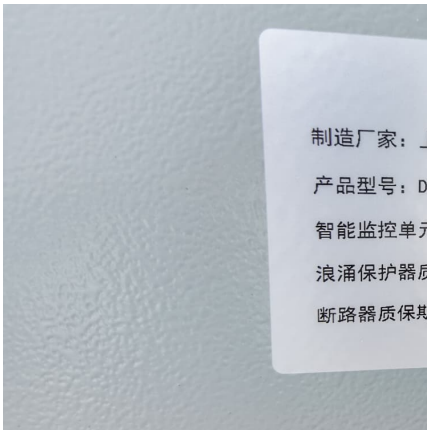
Upgrade to the CARTEK XR Battery Isolator: the latest in motorsport safety. Compact, lightweight, and fully electronic with superior performance. Perfect for your ECU or PDM.

### **Cartek XR Battery Isolator Kit**

The smallest and lightest isolator Cartek have produced to date, designed to connect with motorsport ECU's and Power Distribution Modules or PDM's. Manufactured using solid state



technology, these units are unaffected by shock ...

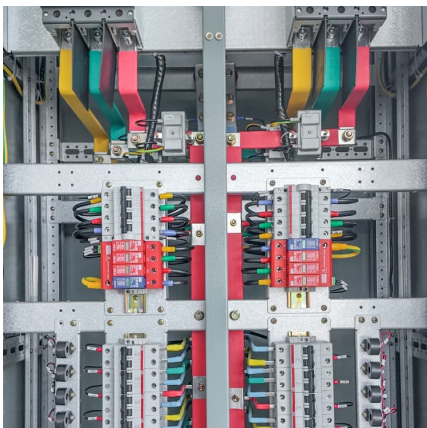
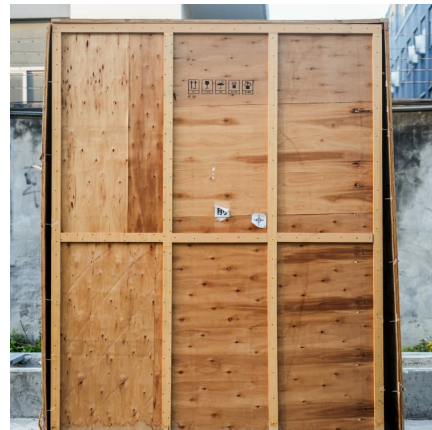


### Cartek XR Battery Isolator Kit

The smallest and lightest isolator Cartek have produced to date, designed to connect with motorsport ECU's and Power Distribution Modules or PDM's. Manufactured using solid state ...

### CARTEK Battery Isolator XR (Kit NO External Switch)

At 30% smaller size and 40% lighter weight than the previous 'standard' and GT isolators, this XR version offers even more benefits and performance when compared with traditional mechanical ...



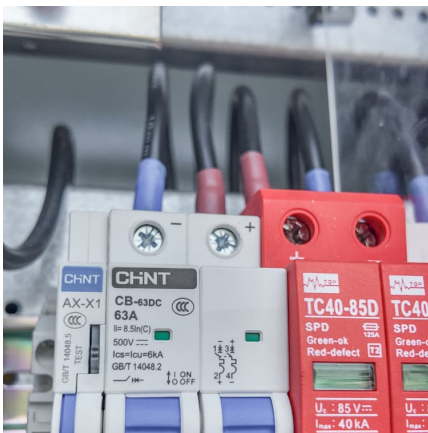
### CARTEK Solid State Battery Isolator. X-Club

The CARTEK Battery Isolator X-Club is designed to be cost effective option - optimized for race and rally cars running production based engines that are stock or mild tune, up to 3L capacity ...



### [Cartek XR Solid State Battery Isolator Kit](#)

When fitted to a race car, the Cartek XR Solid State Battery Isolator simultaneously isolates the battery and kills the engine immediately when triggered, in accordance with FIA safety ...



### [Cartek XR Solid State Battery Isolator Kit](#)

At 30% smaller size and 40% lighter weight than the previous 'standard' and GT isolators, this XR version offers even more benefits and performance when compared with traditional mechanical ...

### **Cartek XR Battery Isolator Kit with Blue External Button**

The Cartek XR Battery Isolator is a compact, solid-state electrical master switch that can be mounted close to the battery. It is triggered by a push button switch which can be remote ...



### **Cartek XR Battery Isolator Kit with Blue External Button**

The Cartek XR Battery Isolator is a compact, solid-state electrical master switch that can be mounted close to the battery. It is triggered by a push button switch ...



### Morehead Speed Works

The new XR battery isolator (CK-BR-08-B) is 30% smaller size and 40% lighter weight than the previous 'standard' and GT isolators. The XR version offers even more benefits and performance when compared with ...



### Morehead Speed Works

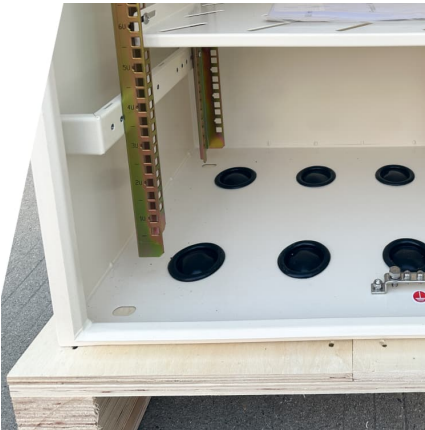
The new XR battery isolator (CK-BR-08-B) is 30% smaller size and 40% lighter weight than the previous 'standard' and GT isolators. The XR version offers even more benefits and ...



### [Cartek XR Solid State Battery Isolator Kit](#)

At 30% smaller size and 40% lighter weight than the previous 'standard' and GT isolators, this XR version offers even more benefits and performance when compared with traditional mechanical master-switches and electro/mechanical ...





### [Cartek XR Solid State Battery Isolator Kit](#)

When fitted to a race car, the Cartek XR Solid State Battery Isolator simultaneously isolates the battery and kills the engine immediately when triggered, in accordance with FIA safety regulations.

### [CARTEK Battery Isolator XR \(Kit NO External Switch\)](#)

At 30% smaller size and 40% lighter weight than the previous 'standard' and GT isolators, this XR version offers even more benefits and performance when compared with traditional mechanical master-switches and electro/mechanical ...



## Contact Us

---

For catalog requests, pricing, or partnerships, please visit:  
<https://www.conrad.edu.pl>