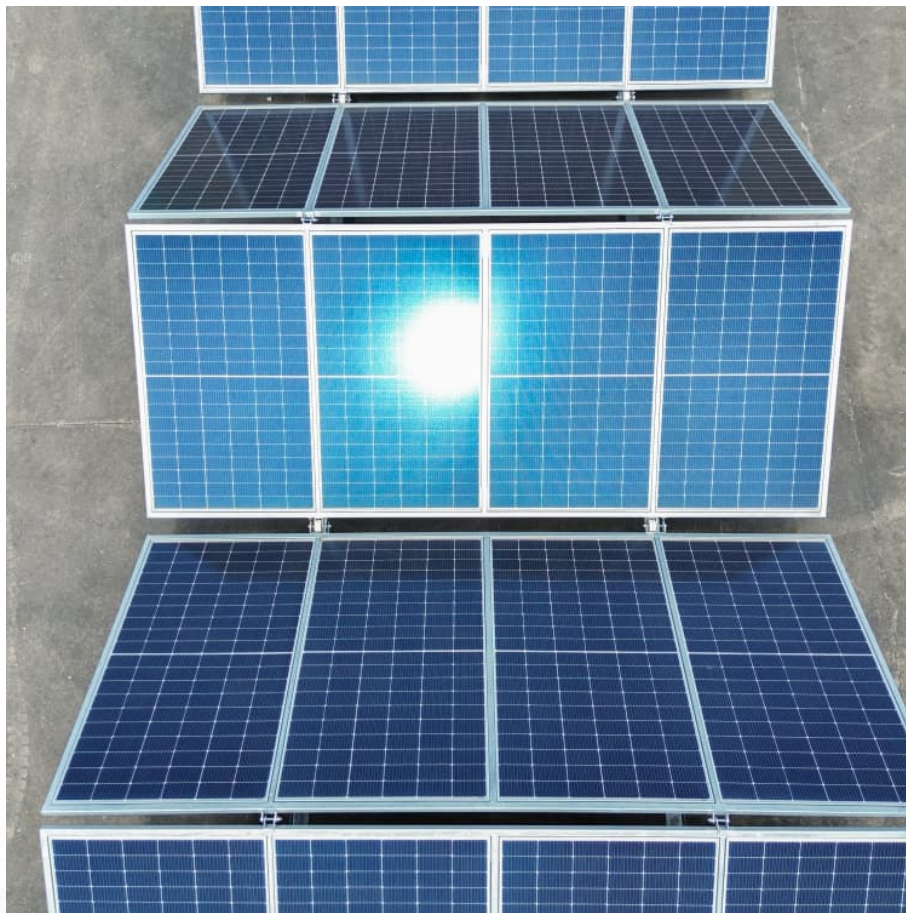


Configuration solar panel 55 ah battery





Overview

What is a solar panel and Battery sizing calculator?

A Solar Panel and Battery Sizing Calculator is an invaluable tool designed to help you determine the optimal size of solar panels and batteries required to meet your energy needs. By inputting specific details about your energy consumption, this calculator provides tailored insights into the solar setup that will best suit your requirements.

What is the core formula for solar panels & batteries?

The core formula considers several factors to determine the correct size of solar panels and batteries. It calculates the total energy requirement, divides it by the product of panel wattage and sunlight hours, and incorporates battery efficiency to suggest storage needs.

How do I choose the right solar panel size for battery charging?

Calculating the right solar panel size for battery charging involves assessing your energy needs and understanding the factors that affect solar panel performance. Start by identifying the devices you want to power and their energy consumption. List each device along with its wattage and the number of hours you'll use it daily.

How many solar panels do I need for battery charging?

To determine how many solar panels you need for battery charging, consider these steps: **Identify Your Energy Consumption:** Calculate how much energy your devices consume daily, typically measured in kilowatt-hours (kWh). **Determine Battery Capacity:** Identify the storage capacity of your batteries, generally expressed in amp-hours (Ah).

How many watts in a solar panel?

$1,000 / 5 = 200$ Watt solar panel. Now that we have our solar panel size figured out it is time to calculate the amp hour rating for the batteries you will



need to keep your specified load running under all conditions. Let's say you choose a battery that is rated at 12 volts then you would do the following calculation:

How do I determine the right battery size for my solar system?

Calculating the correct battery size ensures your solar system operates efficiently. Follow these steps to determine your battery size. Determine your storage needs based on daily energy usage and the desired number of days for autonomy. Assess how many kilowatt-hours (kWh) your household consumes each day.



Configuration solar panel 55 ah battery



Calculation Formula for Solar Panel and Battery Configuration

By following these steps, you can accurately configure a solar panel and battery system tailored to your energy needs. This not only enhances your energy independence but ...

[How to Calculate Solar Panel and Battery Requirements](#)

Increase power redundancy (+20%) for low winter sun; adjust panel tilt at high latitudes. Reserve battery capacity for overcharge/discharge protection (e.g., lead-acid batteries use 70-85% of rated capacity).



How to Correctly Calculate Solar Panel, Inverter, Battery Charger

The following page demonstrates, using calculations, how to properly pick and connect the solar panel, inverter, and charger controller combinations to achieve the best ...



[How to Calculate Solar Panel and Battery Requirements](#)

Increase power redundancy (+20%) for low winter sun; adjust panel tilt at high latitudes. Reserve battery capacity for



overcharge/discharge protection (e.g., lead-acid ...



Solar Panel Calculator

Say you want to use a 55 AH battery because you like the dimensions, or maybe you like the 21 AH battery due to its terminal configuration. Enter your chosen battery ...

How to Calculate Solar Panel for Battery Charging: A Step-by ...

Discover how to efficiently calculate the ideal solar panel setup for battery charging in our comprehensive guide. Learn about different panel types, key performance ...



[How to Calculate Solar Panel and Battery Size for ...](#)

Unlock the secrets to effectively calculating solar panel and battery sizes with our comprehensive guide. This article demystifies the technical aspects, offering step-by-step instructions on assessing energy needs and ...



[How to Calculate Solar Panel for Battery Charging: A...](#)

Discover how to efficiently calculate the ideal solar panel setup for battery charging in our comprehensive guide. Learn about different panel types, key performance ratings, and essential factors influencing efficiency.

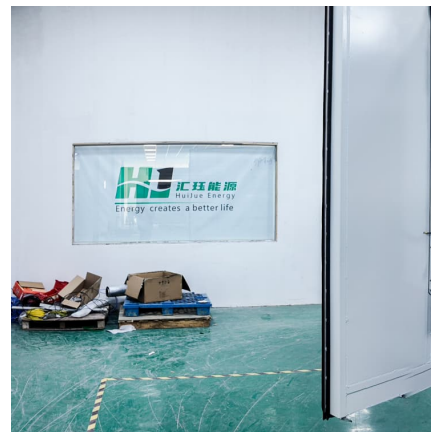


Choosing the Right Battery Size For Your Solar System , SolarEdge

This article guides homeowners and solar enthusiasts through the process of choosing the right battery size by exploring key factors, calculation methods, and best practices for optimising ...

Sizing Your Solar System: Panel & Battery Calculators Simplified

Whether you're powering a fridge in your 4WD, lights at a campsite, or going fully off-grid, this guide will walk you through how to calculate the right size solar panel and battery system for ...



[How to Correctly Calculate Solar Panel, Inverter, ...](#)

The following page demonstrates, using calculations, how to properly pick and connect the solar panel, inverter, and charger controller combinations to achieve the best results from the configuration.



How to Calculate Solar Panel and Battery Size for Your Energy ...

Unlock the secrets to effectively calculating solar panel and battery sizes with our comprehensive guide. This article demystifies the technical aspects, offering step-by-step ...



Contact Us

For catalog requests, pricing, or partnerships, please visit:
<https://www.conrad.edu.pl>