

Connect car battery to solar panels





Overview

Connecting a car battery to solar energy involves multiple essential steps and considerations to ensure a safe and effective setup. 1. Understand the components required, 2. Use an appropriate solar panel, 3. Select a charge controller for battery protection.

Connecting a car battery to solar energy involves multiple essential steps and considerations to ensure a safe and effective setup. 1. Understand the components required, 2. Use an appropriate solar panel, 3. Select a charge controller for battery protection.

Connecting a car battery to solar energy involves multiple essential steps and considerations to ensure a safe and effective setup. 1. Understand the components required, 2. Use an appropriate solar panel, 3. Select a charge controller for battery protection, 4. Ensure correct wiring and.

Connecting a solar panel to a car battery is a practical and efficient way to maintain your car's battery charge, especially for off-grid situations. Whether you're using a solar panel for camping, road trips, or emergency backup, the process is straightforward but requires attention to detail to.

To connect a solar panel to a car battery, use heavy-gauge cabling to attach the panel to a charge controller. The charge controller manages power flow and prevents overcharging. Position the solar panel for maximum sunlight exposure to enhance its efficiency and ensure effective charging of the.

In short, yes, you can use a car battery for a solar panel, but it is not recommended on efficiency and safety grounds. While it will function, there are compelling reasons to discourage this choice. Before delving into why it's not advisable, let's examine the motivations that might tempt you to.

Connecting a solar panel to a battery requires several essential components to ensure a smooth operation. Below are the critical parts you'll need to set up your solar power system effectively. Solar panels capture sunlight and convert it into electricity. Available in various types, including.



Connecting a solar panel to a car battery is a practical way to maintain charge, extend battery life, or power small devices while off-grid. The process involves selecting the right solar panel, using a charge controller to regulate voltage, and ensuring proper wiring connections to avoid damage. How do you connect a car battery to a solar panel?

Positive Cable: Connect the red (positive) cable from the solar panel to the positive terminal of the charge controller. **Negative Cable:** Connect the black (negative) cable from the solar panel to the negative terminal of the charge controller. Next, connect the charge controller to your car battery.

Can a solar panel connect a car battery without a charge controller?

One of the biggest mistakes is trying to connect a solar panel directly to a car battery without using a solar charge controller. Without it, you risk overcharging the battery, which can lead to reduced battery life, overheating, or even damage. The charge controller regulates the voltage and current, ensuring the battery is charged safely.

How do you charge a solar panel on a car?

Car Battery: Ensure the battery is in good condition and suitable for solar charging. Position your solar panel in a location where it will receive maximum sunlight exposure, such as the roof of your vehicle, in your car's trunk, or on a portable stand. Make sure it's securely mounted to avoid movement while driving.

Can you use a car battery for a solar panel?

In short, yes, you can use a car battery for a solar panel, but it is not recommended on efficiency and safety grounds. While it will function, there are compelling reasons to discourage this choice. Before delving into why it's not advisable, let's examine the motivations that might tempt you to attempt it.

What is a solar charge controller?

The charge controller regulates the voltage and current, ensuring the battery is charged safely. **Solution:** Always use a solar charge controller between your solar panel and car battery. It's a simple but essential component that prevents damage. Ensure that the voltage and wattage of your solar panel match your car battery's requirements.

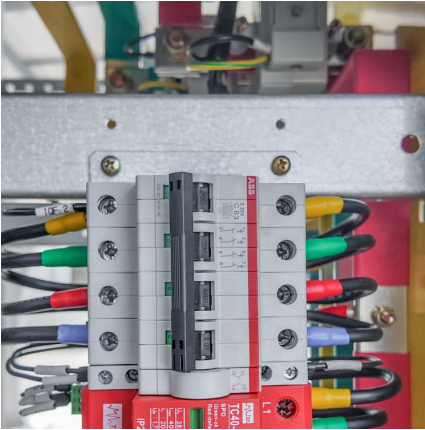


Can you connect solar panels to a charge controller?

If you wire the solar panels to your charge controller first, the fuse of the charge controller might blow. If your charge controller has no replaceable fuse, you can't use it anymore. Always connect your battery to the charge controller first. Read more: [Can I connect my charge controller directly to an inverter?](#)



Connect car battery to solar panels



How to connect the battery to the solar panel car , NenPower

In order to effectively connect a battery to a solar panel for a car, the following steps should be taken: 1. Choose appropriate components, 2. Understand conne...

[How To Connect A Solar Panel To Your Car Battery](#)

Without saying much, here is a guide on how to connect a solar panel to your car battery. But, before we dive into the step-by-step procedure, there are items you need, and they include.



[How to connect solar panel to car battery](#)

Connecting a solar panel to a car battery is a practical way to maintain charge, extend battery life, or power small devices while off-grid. The process involves selecting the ...

[How to Connect a Solar Panel to a 12V Battery?](#)

Here I will show you how to connect a solar panel to a 12V battery. You will need a charge controller to prevent overcharging. I use diagrams to explain



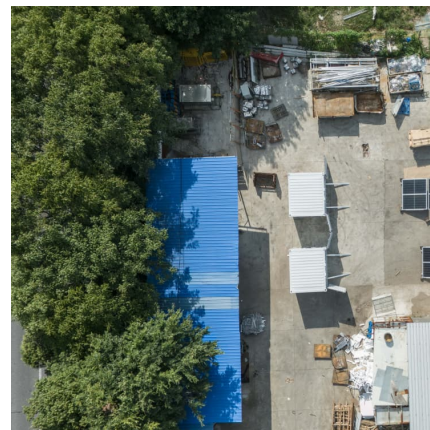
How to Hook Up Solar Panel to Battery: A Step-by-Step Guide for

Discover how to effectively hook up a solar panel to a battery in this comprehensive guide. Learn about the essential components, including various solar panel ...



Can You Plug Solar Panels Directly to a Car Battery? Benefits, ...

How Can You Safely Connect Solar Panels to a Car Battery? You can safely connect solar panels to a car battery by using the correct equipment and following specific ...



[How to connect the battery to the solar panel car](#)

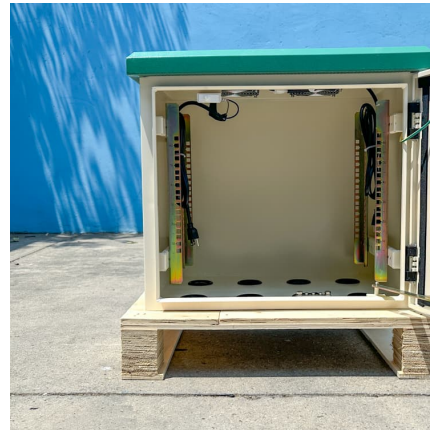
In order to effectively connect a battery to a solar panel for a car, the following steps should be taken: 1. Choose appropriate components, 2. Understand conne...





[Can I Use a Car Battery For a Solar Panel?](#)

In short, yes, you can use a car battery for a solar panel, but it is not recommended on efficiency and safety grounds. While it will function, there are compelling ...



[How to Connect a Solar Panel to a 12V Battery? \[Diagrams\]](#)

Here I will show you how to connect a solar panel to a 12V battery. You will need a charge controller to prevent overcharging. I use diagrams to explain

Can a Solar Panel Connect to My Car Battery? Benefits, Best ...

How Do You Connect a Solar Panel to a Car Battery Safely? To connect a solar panel to a car battery safely, you need to use a solar charge controller, ensure proper wiring, ...



[Can I Use a Car Battery For a Solar Panel?](#)

In short, yes, you can use a car battery for a solar panel, but it is not recommended on efficiency and safety grounds. While it will function, there are compelling reasons to discourage this choice.



[How to connect car battery to solar energy.](#) [NenPower](#)

Connecting a car battery to solar energy involves multiple essential steps and considerations to ensure a safe and effective setup. 1. Understand the components required, 2. ...



Contact Us

For catalog requests, pricing, or partnerships, please visit:
<https://www.conrad.edu.pl>