

Connecting a solar panel directly to a battery





Overview

How do you connect solar panels to a battery system?

How you connect solar panels to battery systems depends on your voltage requirements: Series wiring adds voltages while maintaining the same current. Connect the positive terminal of one panel to the negative terminal of the next. This configuration works well for MPPT controllers and higher system voltages.

Can a solar panel connect to a battery?

As a rule of thumb, you can connect your solar panels directly to a battery if the output voltage (V_{mp}) doesn't exceed 35% of the rated battery voltage. That's 16V max. for a 12V battery. If the solar panel V_{mp} is too high (overvoltage), this will permanently damage your battery. Finally, this configuration should only be for emergency charging.

How do you charge a solar panel?

Connect the solar panel to the charge controller using the wiring. Connect the charge controller to the battery using the wiring. Connect the battery charger to the battery. Turn on the power switch for the solar panel. Flip the switch on the charge controller to "on." Plug in the battery charger and turn it on. And that's it!

Can I connect multiple solar panels to one battery system?

A: Yes, you can connect multiple solar panels to one battery system, but make sure to use a compatible charge controller to handle the additional power. Q: How long does it take to charge a battery with solar panels?

A: The charging time depends on the battery capacity, solar panel output, and sunlight availability.

Why do solar panels need to be connected first?



Why Battery Connects First Always connect the battery to your charge controller before connecting solar panels. This sequence is crucial because charge controllers use battery voltage as a reference to determine system voltage (12V, 24V, or 48V). Connecting solar panels first can confuse the controller and potentially cause damage.

Why should you connect batteries to charge controllers before solar panels?

Connection sequence is critical for equipment safety – Always connect batteries to charge controllers before solar panels. This prevents controller damage and ensures proper system voltage detection, as charge controllers use battery voltage as their reference point.



Connecting a solar panel directly to a battery

How to Connect Solar Panels to Battery: Complete 2025 Safety ...

Learn how to safely connect solar panels to batteries with our expert step-by-step guide. Includes wiring diagrams, safety tips, and troubleshooting advice.

[How to Connect Solar Panels to Battery: Complete ...](#)

Learn how to safely connect solar panels to batteries with our expert step-by-step guide. Includes wiring diagrams, safety tips, and troubleshooting advice.



[Can you connect solar panels directly to a battery?](#)

Connecting your solar panels directly to a battery is possible but not advisable. In an emergency, this will only work for smaller systems (12V battery and solar panel below ...

Can Solar Panels Be Connected Directly To A Battery? How To ...

Yes, you can connect a small solar panel directly to a battery for trickle charging. This setup helps reduce self-discharge. Make sure the panel's open-circuit voltage is higher ...



[Can I hook up a solar panel directly to a battery](#)

A: Yes, you can connect a solar panel directly to a battery, but it is important to match the voltage of the solar panel to the battery voltage. Additionally, using a charge controller is highly recommended to prevent ...



How to Hook Up Solar Panel to Battery: A Step-by-Step Wiring ...

It is crucial to know how to connect solar panels to battery systems, as this is essential for building reliable and long-lasting solar setups. With the correct charge controller, ...

[Can you connect solar panels directly to a battery?](#)

Here I will show you how to connect a solar panel to a 12V battery. You will need a charge controller to prevent overcharging. I use diagrams to explain



Can I Connect Solar Panel Directly To



Battery? [Should I Do It?]

You might wonder: Can I connect solar panel directly to battery? In this article, we explain whether you can do it and how to do it safely.

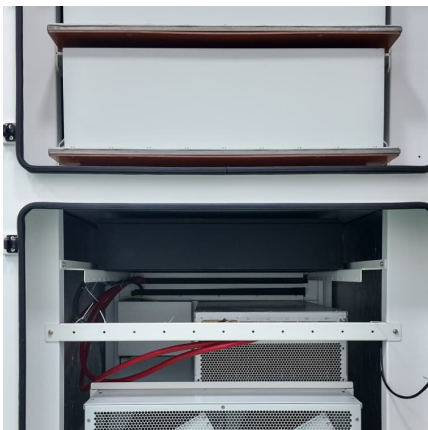


Connecting a Solar Panel to a Battery: The Complete Guide

Learn the step-by-step process to safely and efficiently connect solar panels to batteries, ensuring optimal energy storage and performance for your solar power system.

How to Hook Up a Solar Panel to a Battery: A Step-by-Step Guide

Connecting solar panels to a battery system is essential for storing energy generated from the sun. This setup allows you to use solar power when the sun isn't shining, ...



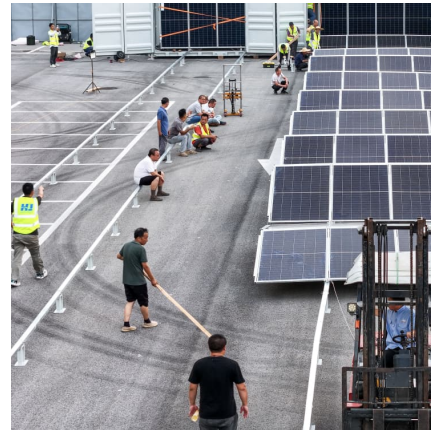
[Can I hook up a solar panel directly to a battery](#)

A: Yes, you can connect a solar panel directly to a battery, but it is important to match the voltage of the solar panel to the battery voltage. Additionally, using a charge ...



[Connecting a Solar Panel to a Battery: The Complete ...](#)

Learn the step-by-step process to safely and efficiently connect solar panels to batteries, ensuring optimal energy storage and performance for your solar power system.



How to Connect a Solar Panel to Battery: A Step-by-Step Guide ...

Unlock the potential of solar energy with our comprehensive guide on how to connect a solar panel to a battery. Discover the benefits for off-grid camping and reducing ...

[How to Connect a Solar Panel to a 12V Battery? \[Diagrams\]](#)

Here I will show you how to connect a solar panel to a 12V battery. You will need a charge controller to prevent overcharging. I use diagrams to explain



Contact Us

For catalog requests, pricing, or partnerships, please visit:
<https://www.conrad.edu.pl>