

Connecting solar panel to engel battery box





Overview

How do you connect solar panels to a battery system?

How you connect solar panels to battery systems depends on your voltage requirements: Series wiring adds voltages while maintaining the same current. Connect the positive terminal of one panel to the negative terminal of the next. This configuration works well for MPPT controllers and higher system voltages.

How do I set up the Engel smart battery box?

al battery set-up. The best method to do this is to connect the Engel Smart Battery Box to a dual battery wiring loom (not supplied) using either the positive/negative external terminals or the Anderson plug. Using these methods the smart charge system is bypassed so the Engel Smart Battery Box cannot control th.

Can I connect a dual battery loom to the Engel smart battery box?

Yes you can however, you will need a dual battery wiring kit installed into your vehicle. We recommend you get this kit installed by a qualified auto electrician. You can connect the dual battery wiring loom to the Engel Smart Battery Box either via the external terminals or the Anderson socket.

What accessories are required to secure the Engel smart battery box?

Please note: in order to secure the Engel Smart Battery Box to your vehicle, the following accessories are required: Product Type Battery Box with capacity for up to 130Amp Hour Batteries. Supports Lead Acid, Gel, Calcium, AGM & LiFeP04 batteries. (Battery not included) Ask Us a Question Thank you! Your product question has been submitted.

Can Engel smart battery box be used in a D AI battery set-up?

Low input voltage. Input voltage is below limit require the Anderson PlugThe Engel Smart Battery Box can be used in a d al battery set-up. The best



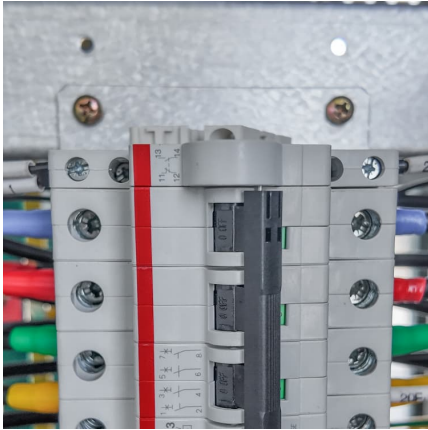
method to do this is to connect the Engel Smart Battery Box to a dual battery wiring loom (not supplied) using either the positive/negative external terminals or.

Can I connect a solar panel to a charge controller?

If you connect the solar panel to a charge controller first, it may not initialize correctly. After you've connected the charge controller to the battery, it is now safe to connect it to the panels. Out of the junction box of a panel come two cables, a positive and a negative.



Connecting solar panel to engel battery box



[Engel Smart Battery Box Series 2 : Manual](#)

Overview of Charging Process: The Engel Smart Battery Box seven stage smart charger is based on an advanced software program that monitors your battery. Smart charge will select from the ...

How to connect solar panels to battery bank, charge controller ...

A charge controller acts as a safety barrier between panels and a battery and should be a part of every home solar panel installation. In this article, we'll explain how to wire ...



How to Connect Solar Panels to Battery: Complete 2025 Safety ...

Learn how to safely connect solar panels to batteries with our expert step-by-step guide. Includes wiring diagrams, safety tips, and troubleshooting advice.

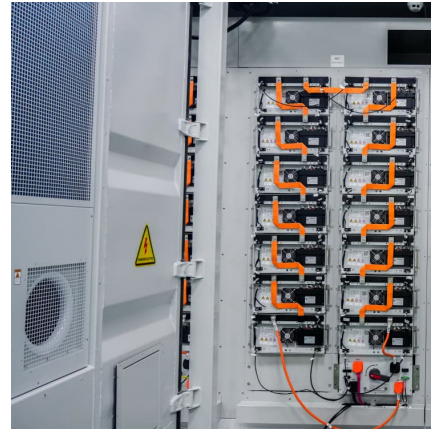


How to Connect Solar Panels to Batteries: A Step by Step Guide

Learn the step-by-step process to safely and efficiently connect solar panels to batteries, ensuring optimal energy storage and



performance for your solar power system.



[How to Connect Solar Panels to Battery: Complete ...](#)

Learn how to safely connect solar panels to batteries with our expert step-by-step guide. Includes wiring diagrams, safety tips, and troubleshooting advice.



How to connect solar panels to battery bank, charge controller ...

You can connect the dual battery wiring loom to the Engel Smart Battery Box either via the external terminals or the Anderson socket. Please remember the main isolator switch must be in the "on" position.



[How To Connect Solar Panel Battery Box](#)

Solar panels are becoming increasingly popular and there are many people who want to learn how to connect a solar panel battery box. This article will provide an overview of ...





[How to Connect Solar Panels to Batteries: A Step by ...](#)

Learn the step-by-step process to safely and efficiently connect solar panels to batteries, ensuring optimal energy storage and performance for your solar power system.



[How to connect solar battery to battery box . NenPower](#)

Determining compatibility between a solar battery and a battery box involves several factors, primarily focusing on voltage, capacity, and type of battery. Begin by checking ...

Engel Smart Battery Box

You can connect the dual battery wiring loom to the Engel Smart Battery Box either via the external terminals or the Anderson socket. Please remember the main isolator switch must be ...



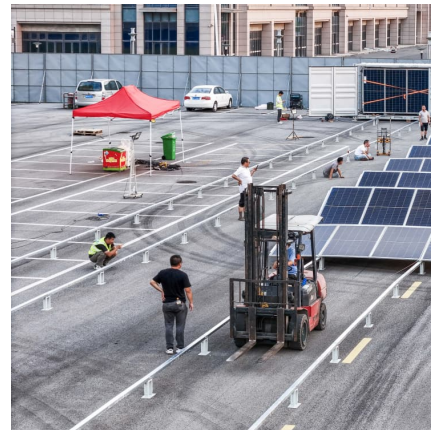
Engel fridge and solar panels

Click here for the Grey Nomads website -> The Grey Nomads Forum -> Solar Power -> Engel fridge and solar panels Start A New Topic Reply Post Info TOPIC: Engel fridge ...



[Does the Engel battery box have a solar regulator?](#)

The Engel Smart Battery Box can be connected to solar by an Anderson plug, the battery box does not have its own regulator so your solar panel would need to have its own ...



[How to connect solar battery to battery box., NenPower](#)

Determining compatibility between a solar battery and a battery box involves several factors, primarily focusing on voltage, capacity, and type of battery. Begin by checking the specifications of both components; most ...



Contact Us

For catalog requests, pricing, or partnerships, please visit:
<https://www.conrad.edu.pl>