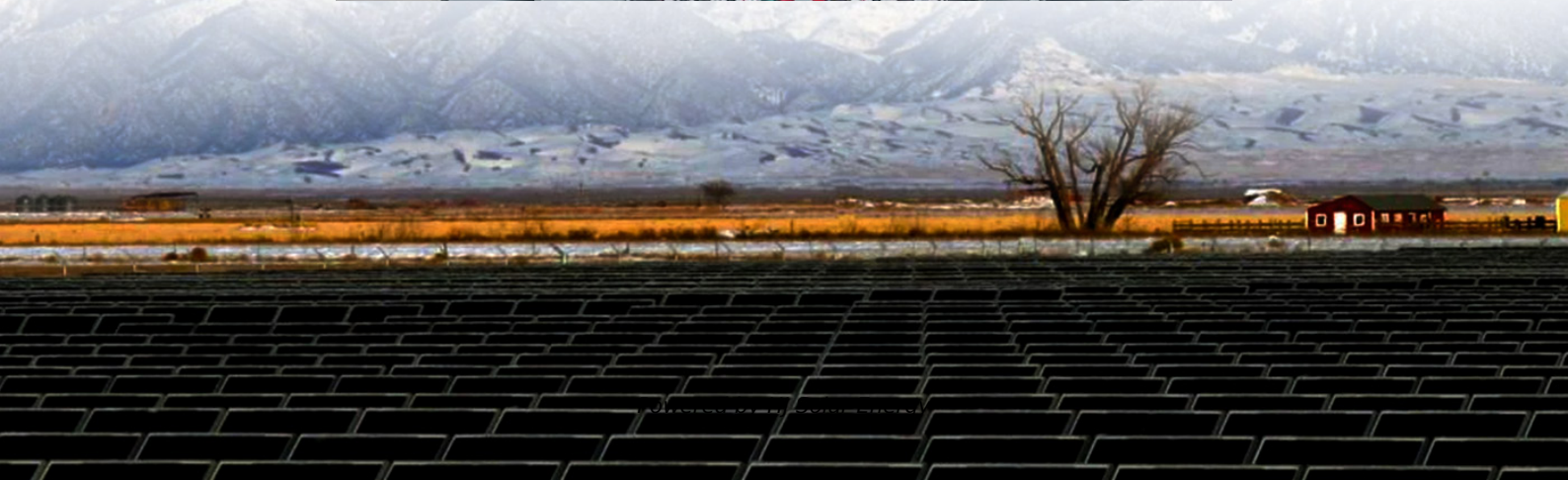
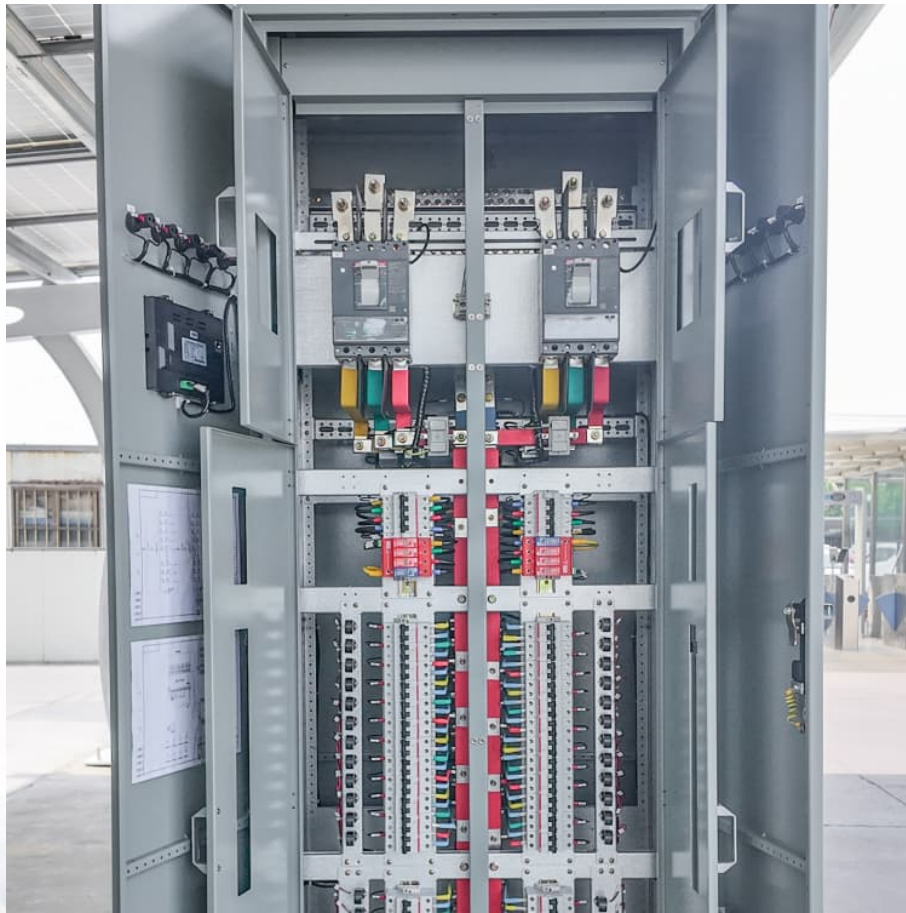


# **Contect solar panel to controller or controler to battery first**





## Overview

---

It's advised to wire the controller to the battery first before connecting it to a solar array. Controllers often have to perform an initialization when they get connected to a battery during which the regulator evaluates the battery's state.

It's advised to wire the controller to the battery first before connecting it to a solar array. Controllers often have to perform an initialization when they get connected to a battery during which the regulator evaluates the battery's state.

Whenever you add energy storage to a solar system, add a charge controller in between the panels and the battery • Lowers the voltage of panels down to the level of the battery. When the battery is directly connected to panels whose voltage is higher, the battery heats up. Not only does it decrease.

Can you connect SCC to Battery first before Inverter?

& does negative always go first?

Inverter and SCC (Solar Charge Controller) are different beasts, the only thing they have in common is they're both connected to the battery- that's it. SO. SCC: Always connect battery first before solar.

When connecting to a Renogy charge controller it is likely you have seen a warning like the following: WARNING! Connect the battery terminal wires to the charge controller FIRST, then connect the solar panel (s) to the charge controller. NEVER connect solar panel to charge controller before the.

Connection sequence is critical for equipment safety – Always connect batteries to charge controllers before solar panels. This prevents controller damage and ensures proper system voltage detection, as charge controllers use battery voltage as their reference point. Lithium batteries offer.

In this article, I will explain how to connect a solar panel to a battery step-by-step. I will also share a few tips you need to know along the way. Here is a



diagram connecting a single 100W solar panel to a 12V 100Ah lithium battery and a 500W inverter: In the first step, you will wire the.

To connect a solar panel to a battery, you'll first need a solar charge controller which regulates the voltage and current coming from your solar panels. Then, connect the solar panels to the charge controller and finally connect the charge controller to the battery. Always ensure that the. How to connect solar panels to charge controller?

Using the wire cutters, cut enough wire to connect your solar panels to the charge controller. Also, cut a wire to connect the charge controller to the battery. First, connect the battery to the charge controller before the solar panels. This is crucial as connecting in the wrong order can damage your equipment.

Why should you connect batteries to charge controllers before solar panels?

Connection sequence is critical for equipment safety – Always connect batteries to charge controllers before solar panels. This prevents controller damage and ensures proper system voltage detection, as charge controllers use battery voltage as their reference point.

How do you connect a solar panel system to a battery?

To connect your solar panel system, first, disconnect all components. Connect the charge controller to the battery, then attach the solar panels to the charge controller. Finally, connect the inverter to the battery. Always turn on the charge controller before the inverter and check that all indicators are functioning properly.

What is a solar charge controller?

The charge controller is the critical component that regulates power flow when you connect solar panels to battery systems: Maximum Power Point Tracking (MPPT) controllers extract 20-30% more energy from solar panels by continuously adjusting to optimal voltage and current combinations.

How to choose a solar charge controller?

When choosing a charge controller, consider its type, such as PWM (Pulse Width Modulation) or MPPT (Maximum Power Point Tracking), as each has unique benefits based on your energy needs. Connecting your solar panel system involves several steps. By following this guide, you can set up your



solar charge controller, battery, and inverter efficiently.

Why do solar panels need to be connected first?

**Why Battery Connects First** Always connect the battery to your charge controller before connecting solar panels. This sequence is crucial because charge controllers use battery voltage as a reference to determine system voltage (12V, 24V, or 48V). Connecting solar panels first can confuse the controller and potentially cause damage.



## Contact solar panel to controller or controller to battery first

---



### [How to Connect a Solar Panel to a 12V Battery?](#)

Here I will show you how to connect a solar panel to a 12V battery. You will need a charge controller to prevent overcharging. I use diagrams to explain

### How to connect solar panels to charge controller in 3 ...

We recommend wiring the controller to the battery before connecting it with solar panels. Many controllers perform an initialization sequence when they first connect to a battery.



### How to Connect Solar Panel Charge Controller Battery and ...

Proper Connection Steps: Follow a systematic connection process: disconnect power, connect the charge controller to the battery, attach solar panels to the charge controller, ...

### How to connect solar panels to charge controller in 3 steps

We recommend wiring the controller to the battery before connecting it with solar panels. Many controllers perform an initialization



sequence when they first connect to a ...

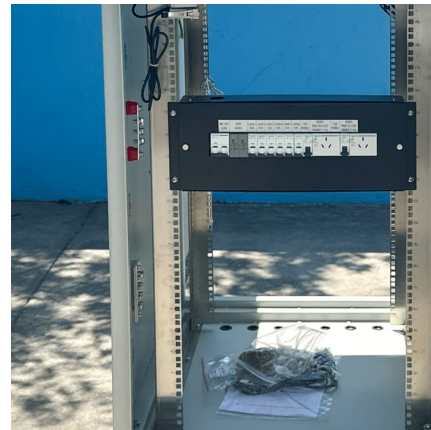


### How to Connect Solar Panels to Battery: Complete 2025 Safety ...

Solution: Always follow the sequence: Battery to charge controller first, then solar panels to charge controller, finally inverter to battery. Forgetting to disconnect solar ...

### [How to Connect Solar Panel to Battery: A Step-by-Step ...](#)

To connect a solar panel to a battery, you'll first need a solar charge controller which regulates the voltage and current coming from your solar panels. Then, connect the solar panels to the charge controller and finally ...



### How to Hook Up Solar Panel to Battery: A Step-by-Step Wiring ...

Once you read the manual and double check to connect the positive and negative wires, make the right connection between the battery and the controller, and always follow the ...



## How to connect solar panels to battery bank, charge controller ...

It's advised to wire the controller to the battery first before connecting it to a solar array. Controllers often have to perform an initialization when they get connected to a battery ...



## Battery Wiring Order - Renogy US

Connect the battery terminal wires to the charge controller FIRST, then connect the solar panel (s) to the charge controller. NEVER connect solar panel to charge controller before the battery.

## [How to Connect a Solar Panel to a 12V Battery? \[Diagrams\]](#)

Here I will show you how to connect a solar panel to a 12V battery. You will need a charge controller to prevent overcharging. I use diagrams to explain



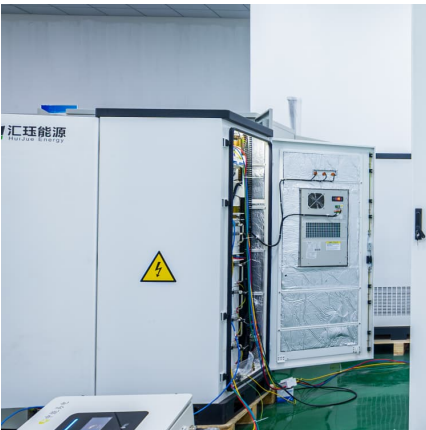
## [Correct Order to Safely Connect System](#)

SCC: Always connect battery first before solar (PV) connecting + or - first doesn't matter. Solar down at 100+ volts will produce a small spark have a circuit breaker between ...



### Connect Panels to a Battery Bank, Charge Controller & Inverter

This article from ShopSolar provides a guide on how to connect solar panels to a battery bank, charge controller, and inverter in a DIY solar panel system. It emphasizes the ...



### [How to Connect Solar Panels to Battery: Complete ...](#)

Solution: Always follow the sequence: Battery to charge controller first, then solar panels to charge controller, finally inverter to battery. Forgetting to disconnect solar panels during maintenance can result in ...

### How to Connect Solar Panel to Battery: A Step-by-Step Guide for

To connect a solar panel to a battery, you'll first need a solar charge controller which regulates the voltage and current coming from your solar panels. Then, connect the ...





## Contact Us

---

For catalog requests, pricing, or partnerships, please visit:  
<https://www.conrad.edu.pl>