

Definition of superconducting energy storage





Overview

Superconducting magnetic energy storage (SMES) systems are created by the flow of current in a coil that has been cooled to a temperature below its critical temperature. This use of superconducting coils to store magnetic energy was invented by M. Ferrier in 1970. A typical SMES system includes three parts: superconducting coil, power conditioning system and.

Superconducting energy storage systems utilize superconducting magnets to convert electrical energy into electromagnetic energy for storage once charged via the converter from the grid, magnetic fields form within each coil that is then utilized by superconductors as magnets and.

Superconducting energy storage systems utilize superconducting magnets to convert electrical energy into electromagnetic energy for storage once charged via the converter from the grid, magnetic fields form within each coil that is then utilized by superconductors as magnets and.

Superconducting energy storage systems store energy using the principles of superconductivity. This is where electrical current can flow without resistance at very low temperatures. Image Credit: Anamaria Mejia/Shutterstock.com These systems offer high-efficiency, fast-response energy storage, and.

Superconducting magnetic energy storage (SMES) systems store energy in the magnetic field created by the flow of direct current in a superconducting coil that has been cryogenically cooled to a temperature below its superconducting critical temperature. This use of superconducting coils to store.

Superconducting energy storage devices are innovative systems that utilize superconducting materials to store and release vast amounts of electrical energy efficiently. 1. These devices leverage zero electrical resistance for energy storage, 2. They operate effectively at cryogenic temperatures, 3.

The superconducting magnetic energy storage system is a kind of power facility that uses superconducting coils to store electromagnetic energy directly, and then returns electromagnetic energy to the power grid or other loads when needed. In this article, we will introduce superconducting magnetic.



SMES is an advanced energy storage technology that, at the highest level, stores energy similarly to a battery. External power charges the SMES system where it will be stored; when needed, that same power can be discharged and used externally. However, SMES systems store electrical energy in the.

Superconductivity is a quantum mechanical phenomenon where certain materials conduct electricity without resistance when cooled below a required temperature. It include: Superconductors allow perpetual current flow without energy loss under ideal conditions, which is their defining characteristic.



Definition of superconducting energy storage



Definition of Critical Currents in Superconducting Magnetic ...

Abstract. Superconducting magnetic energy storage (SMES) systems are expected to be very prospective and flexible energy storage elements of future electric grid interconnectors based ...

Energy Storage Device

Typically energy storage devices are supercapacitors (SC), superconducting magnetic energy storage (SMES), flywheel energy storage systems (FESS), batteries, hybrid ESS, thermal ...



Magnetic Energy Storage

Superconducting magnetic energy storage (SMES) is defined as a system that utilizes current flowing through a superconducting coil to generate a magnetic field for power storage, ...

Superconductivity , Physics, Properties, & Applications , Britannica

Suggested uses for superconducting materials include medical magnetic-imaging devices, magnetic energy-storage systems, motors,



generators, transformers, ...



Energy Storage Technology

Introduction Energy storage technologies can be classified into different categories based on their conversion/storage approach: chemical including electrochemical (e.g., as in hydrogen, ...

Supercapacitor

A supercapacitor (SC), also called an ultracapacitor, is a high-capacity capacitor, with a capacitance value much higher than solid-state capacitors but with lower voltage limits. It ...



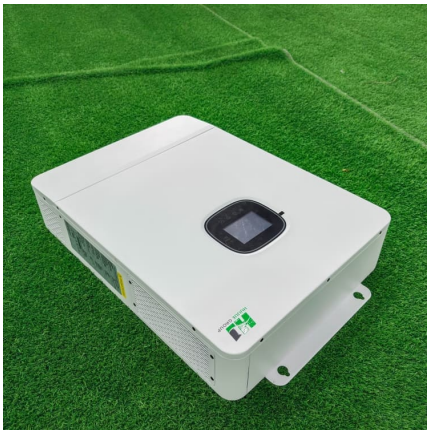
SUPERCONDUCTING MAGNETIC ENERGY STORAGE DEFINITION

Superconducting magnetic energy storage (SMES) systems store energy in the magnetic field created by the flow of direct current in a superconducting coil that has been cryogenically ...

[Superconducting magnetic energy storage-definition, ...](#)



The superconducting magnetic energy storage system is a kind of power facility that uses superconducting coils to store electromagnetic energy directly, and ...

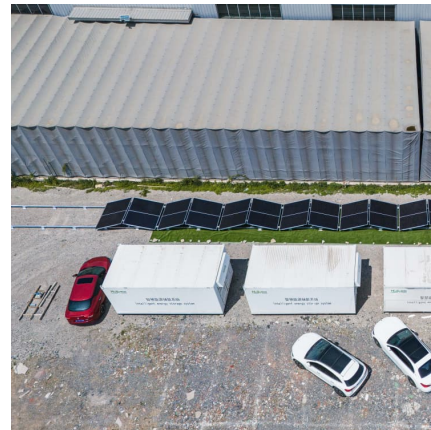


Superconducting magnetic energy storage

Superconducting magnetic energy storage (SMES) systems store energy in the magnetic field created by the flow of direct current in a superconducting coil that has been cryogenically ...

Energy Storage

Energy storage is defined as a range of technologies and measures that convert electric energy into other forms for storage and release when necessary, addressing the mismatch between ...



Introduction to Superconducting Magnetic Energy

Superconducting Magnetic Energy Storage (SMES) systems are highly efficient, achieving round-trip energy efficiency of 90% to 95%. These systems use ...



Comprehensive review of energy storage systems technologies, ...

Battery, flywheel energy storage, super capacitor, and superconducting magnetic energy storage are technically feasible for use in distribution networks. With an energy density ...

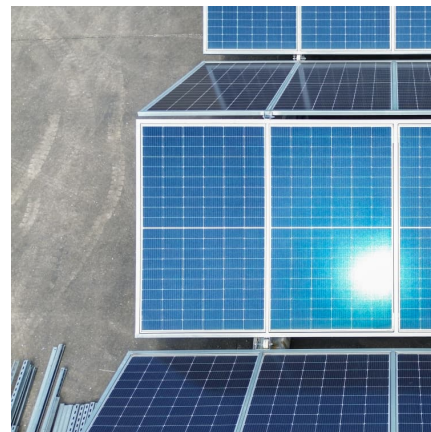


Magnetic Energy Storage

SMES, or Superconductor Magnetic Energy Storage, is defined as a technology that stores energy in the form of a magnetic field created by direct current passing through a cryogenically ...

Application potential of a new kind of superconducting energy storage

Our previous studies had proved that a permanent magnet and a closed superconductor coil can construct an energy storage/convertor. This kind of device is able to ...



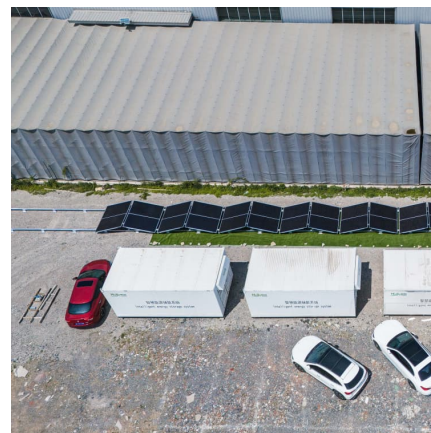
Definition of Critical Currents in Superconducting Magnetic Energy

Superconducting magnetic energy storage (SMES) systems are expected to be very prospective and flexible energy storage elements of future electric grid interconnectors based on renewable ...



superconducting energy storage definition and its application

A superconducting energy pipeline cooled during its clean energy transferring becomes attractive recently to be a promising alternative way for combined green energy transmission to meet the ...



Electrical Energy Storage

Executive summary Electrical Energy Storage, EES, is one of the key technologies in the areas covered by the IEC. EES techniques have shown unique capabilities in coping with some ...

Superconducting magnetic energy storage

Overview Advantages over other energy storage methods Current use System architecture Working principle Solenoid versus toroid Low-temperature versus high-temperature superconductors Cost

Superconducting magnetic energy storage (SMES) systems store energy in the magnetic field created by the flow of direct current in a superconducting coil that has been cryogenically cooled to a temperature below its





superconducting critical temperature. This use of superconducting coils to store magnetic energy was invented by M. Ferrier in 1970. A typical SMES system includes three parts: superconducting coil, power conditioning system an...



Definition of Critical Currents in Superconducting Magnetic ...

Superconducting storage elements may be characterized by such important parameters as a very fast response on variation of the energy generation conditions and ...

Definition of Critical Currents in Superconducting Magnetic Energy

Abstract Superconducting magnetic energy storage (SMES) systems are expected to be very prospective and flexible energy storage elements of future electric grid interconnectors based ...



Design of Superconducting Magnetic Energy Storage (SMES) for ...

It is the case of Fast Response Energy Storage Systems (FRESS), such as Supercapacitors, Flywheels, or Superconducting Magnetic Energy Storage (SMES) devices. ...

Definition of Critical Currents in Superconducting Magnetic Energy



Abstract Superconducting magnetic energy storage (SMES) systems are expected to be very prospective and flexible energy storage elements of future electric grid ...

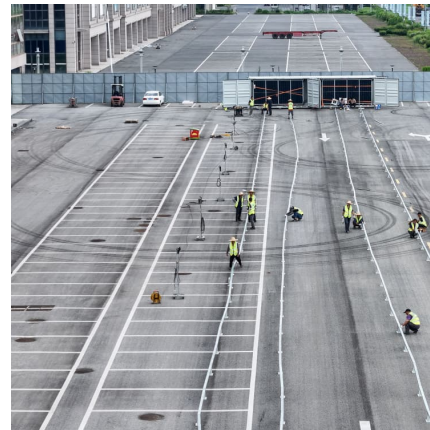


Definition and Classification of Energy Storage Systems

Who is responsible for covering the costs of storage systems? To categorize storage systems in the energy sector, they first need to be carefully defined. This chapter ...

Definition of superconducting energy storage and its ...

Learn more. Superconducting magnetic energy storage (SMES) is known to be an excellent high-efficient energy storage device. This article is focused on various potential applications of the ...



Contact Us

For catalog requests, pricing, or partnerships, please visit:
<https://www.conrad.edu.pl>