

# Discharge depth of lithium battery





## Overview

---

Depth of discharge about lithium battery (DoD) measures the percentage of a battery's capacity that has been utilized relative to its total capacity. For instance, if a battery with a total capacity of 100Ah discharges 40Ah, the DoD is 40%.

Depth of discharge about lithium battery (DoD) measures the percentage of a battery's capacity that has been utilized relative to its total capacity. For instance, if a battery with a total capacity of 100Ah discharges 40Ah, the DoD is 40%.

Depth of Discharge about lithium battery (DoD) refers to the percentage of a battery's capacity that has been utilized compared to its total capacity. A thorough understanding of DoD is crucial for maximizing the performance of lithium batteries in sectors such as medical, robotics, and.

The Electric Power Research Institute's research highlights that suboptimal battery management, especially concerning the depth of discharge (DoD), can significantly reduce the anticipated lifespan of a battery, affecting its useful life by as much as 50%. This is crucial for clients dependent on.

Depth of Discharge (DoD) is a percentage that indicates how much energy has been extracted from a fully charged battery. If your 100 Ah battery has extracted 30 Ah out of it, your DoD is 30%. So, then, what is depth of discharge in practical terms?

Here's a good way to put it in perspective: A DoD.

A battery's depth of discharge indicates the percentage of the battery that has been discharged relative to the overall capacity of the battery. For example, if you have a 100 amp-hour battery and use only 20 amp-hours you have discharged your battery by 20%, which means your depth of discharge is.

Depth of Discharge (DoD) refers to the percentage of a battery's total capacity that has been used during its discharge cycle. For instance, if a lithium-ion battery has a total capacity of 100Ah and 40Ah has been consumed, the DoD



would be 40%. The more deeply a battery is discharged, the higher.

Depth of Discharge (DoD) is a key term used to describe the amount of battery capacity that has been used relative to the battery's total capacity. Simply put, if you start with a fully charged lithium battery and use 30% of its energy, the DoD is 30%. If you use 80%, then the DoD is 80%. This.



## Discharge depth of lithium battery

---



### Depth of Discharge 101 Guide for Lithium Batteries by Expert

Depth of Discharge (DoD) is a key term used to describe the amount of battery capacity that has been used relative to the battery's total capacity. Simply put, if you start with ...

### Depth of Discharge

Depth of discharge is defined as the maximum allowable discharging energy below which the lifetime of a battery energy storage (BES) device would be degraded, associated with a critical ...



### What is Depth of Discharge (DOD)? A Simple Guide - LiTime-US

Learn about Depth of Discharge (DOD) in this simple guide. Understand its importance for battery health, lifespan, and optimal performance.

### [Understanding Depth of Discharge \(DoD\): Key to](#)

Have you ever wondered what's the optimal range for depth of discharge? How to crack the perfect balance of DoD according to your battery



...



### [Understanding the Basics about Discharging in Batteries](#)

The Springer handbook on lithium-ion battery systems defines the roles of active materials, electrodes, and electrolytes, which are essential for understanding the basics about ...



### [How Does Depth of Discharge Affect Battery Cycle Life?](#)

Which Battery Chemistries Are Most Sensitive to Depth of Discharge? Lithium-ion chemistries, particularly lithium iron phosphate (LiFePO4), tend to handle higher DoD with ...



### [Fully Discharge Lithium Battery: Damage & Prevention](#)

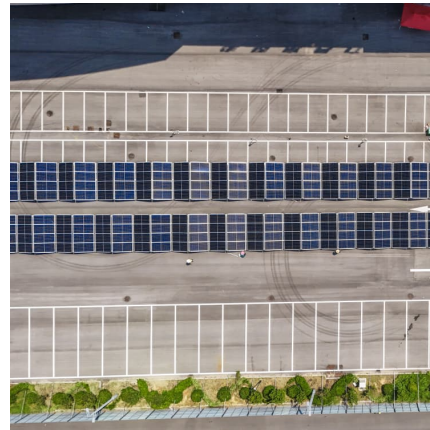
What is a lithium-ion battery and why discharge depth matters? Lithium-ion (Li-ion) batteries operate through complex electrochemical processes where lithium ions shuttle ...





### **What is the Depth of Discharge (DoD) Estimation of a Lithium Ion Battery?**

In this article, we explain what the depth of discharge (DoD) of a lithium ion battery is and how it affects the long-term functioning of the battery. The depth of discharge of a battery indicates ...



### [Understanding the Basics about Discharging in Batteries](#)

The Springer handbook on lithium-ion battery systems defines the roles of active materials, electrodes, and electrolytes, which are essential ...

### [Understanding Depth of Discharge \(DoD\) for Home ...](#)

Learn about a battery's depth of discharge (DoD) and its impact on lifespan and performance. Discover how to choose the right DoD for your home battery to ...



### **Understanding the Depth of Discharge in Lithium Batteries: What ...**

Lithium batteries have revolutionized the way we power our devices, from smartphones to electric vehicles. However, one of the critical factors in maximizing their ...



### Why depth of discharge of lithium batteries matters? The secret to

This article will explore the relationship between life and depth of discharge of lithium batteries in depth, and provide practical suggestions to help you better manage and maintain lithium ...



### What are the best practices for managing the depth of discharge ...

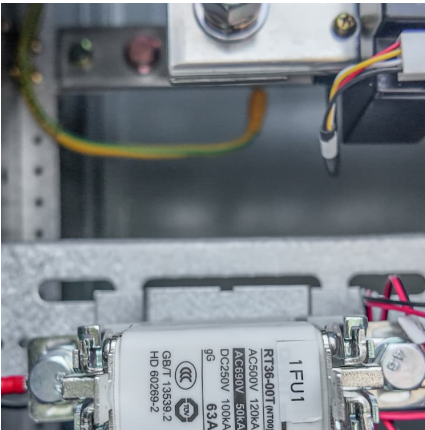
Managing the depth of discharge (DoD) in lithium-ion batteries is crucial for optimizing their lifespan, performance, and efficiency. Here are the best practices for managing ...



### The Role of Depth of Discharge in Lithium Battery Cycle Life

Depth of Discharge is a crucial factor in lithium-ion battery performance and lifespan. Whether in consumer electronics, electric vehicles, or industrial storage, managing ...





### [Depth of Discharge 101: A Comprehensive Overview](#)

Learn everything you need to know about depth of discharge. Understand its significance and impact on battery performance. Find more insights on our blog.

### [Depth of Discharge: Key to Lithium Battery Longevity](#)

Learn why managing depth of discharge is critical to extending lithium battery life. Explore causes of aging, best practices, and how EVs and devices benefit from smart DOD control.



### [Understanding Charge-Discharge Curves of Li-ion Cells](#)

According to the industry standard, the cycle life of a Lithium-ion cell is defined as the number of charge-discharge cycles of the cell by the time ...

### [What is Depth of Discharge in Lithium Batteries](#)

Depth of discharge about lithium battery (DoD) measures the percentage of a battery's capacity that has been utilized relative to its total ...



### Depth of Discharge (DoD) and Its Impact on Solar Battery Efficiency

Depth of Discharge (DoD) is one of the most critical factors when choosing a solar battery. It directly impacts the battery's performance, efficiency, and lifespan.



### Battery DoD: What It Is and Why It Is Important to Know?

Reducing the DoD can significantly extend a battery's cycle life, making it a crucial consideration for applications where longevity is a priority. How Depth of Discharge ...



### Depth of Discharge: Key to Lithium Battery Longevity

One crucial factor is the depth of discharge (DOD), which refers to how much of the battery's total capacity we use before recharging. For instance, if you use 80% of your 100% charged battery, ...





## What Is Depth of Discharge and Why It Matters for Batteries

Depth of Discharge (DoD) is a percentage that indicates how much energy has been extracted from a fully charged battery. If your 100 Ah battery has extracted 30 Ah out of it, ...



### [Battery Depth of Discharge \(DoD\) and overall battery life](#)

Conclusion In summary, Depth of Discharge (DoD) is an important factor in battery selection, where lifespan and performance can vary greatly. Lead Acid and AGM batteries exhibit a DoD ...

### [BU-808: How to Prolong Lithium-based Batteries](#)

There is no memory and the battery does not need periodic full discharge cycles to prolong life. The exception may be a periodic calibration of ...



### [BU-808: How to Prolong Lithium-based Batteries](#)

There is no memory and the battery does not need periodic full discharge cycles to prolong life. The exception may be a periodic calibration of the fuel gauge on a smart ...



### [What is Depth of Discharge \(DOD\)? A Simple Guide](#)

Have you ever been stuck with a dead battery in your car, RV, or golf cart? If so, you understand the importance of proper battery care. In this ...

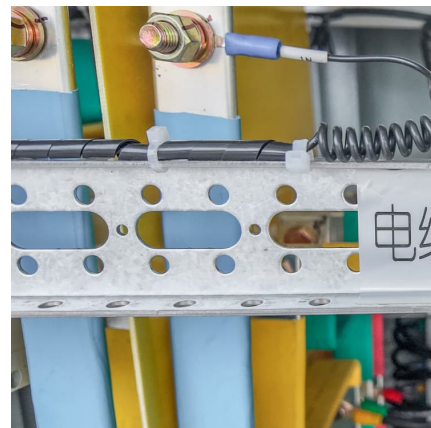


### **What Is Depth of Discharge for Batteries? A Complete ...**

Learn what Depth of Discharge (DoD) means for batteries, how it's calculated, and why it's critical for battery health, safety, and system ...

### [Fully Discharge Lithium Battery: Damage & Prevention](#)

What is a lithium-ion battery and why discharge depth matters? Lithium-ion (Li-ion) batteries operate through complex electrochemical ...





## Contact Us

---

For catalog requests, pricing, or partnerships, please visit:  
<https://www.conrad.edu.pl>