

Disconnecting solar panel from battery





Overview

To safely disconnect a solar panel battery, first turn off the solar panel system completely. Use a multimeter to check voltage levels, and then disconnect the negative terminal first, followed by the positive terminal. Ensure no tools touch both terminals simultaneously.

To safely disconnect a solar panel battery, first turn off the solar panel system completely. Use a multimeter to check voltage levels, and then disconnect the negative terminal first, followed by the positive terminal. Ensure no tools touch both terminals simultaneously.

Have you ever found yourself needing to disconnect your solar panel battery but weren't quite sure how to do it safely?

It's a common situation for many solar panel owners, whether you're performing maintenance or troubleshooting an issue. Understanding System Components: Familiarize yourself with.

I assume they are getting weak because of the age of them but they have been good to me so I want to keep them going as long as possible. They seem to equalize better when I disconnect them and charge them one at a time I need to know the proper sequence to disconnect these and reconnect them.

Understanding how to manage battery disconnect with solar panel settings is key. It helps make your system work better and stay safe. This guide will show you how to set up your solar energy storage right. You can make your solar panels last longer by learning how to handle battery disconnects.

This comprehensive guide outlines the safe process of disconnecting solar panels from batteries. It covers essential safety precautions, necessary tools, and a step-by-step process. The wiring instructions for all solar controllers are the same: connect the controller to the battery before.

Should I simply reconnect panels or do I need to turn off charge controller and start a new set up sequence?



Please don't duplicate queries. There are answers to your other post. When removing from service: Disconnect the panels first. Disconnect the battery second. When returning to service:.

In this post, we'll explain how to disconnect your solar panel and provide the following suggestions if you're new to solar power. Am I Off-Grid When Disconnected?

Can You Leave Panels Disconnected?

What Happens When the Power Goes Out?

There are two steps here: turning off the PV system and. How to safely disconnect solar panels?

Cover the panel and disconnect the battery cables. Check the panel voltage as detailed above, then remove the panel leads from the charge controller. Now the solar panels are fully disconnected and out of the circuit. Safely disconnecting solar panels is one thing.

How to disconnect a solar panel from a charge controller?

Try to make the disconnection at dusk, if at all possible when the panel output is low. If this is not feasible, cover the solar panel with a dense, dark-colored cloth or blanket. In addition, it is good practice to disconnect the solar panel leads from the charge controller if one is installed.

How do I disconnect battery power?

To disconnect battery power, first turn off the breaker or switch for the solar array. Then, turn off the breaker from the + charger output to the + battery bank bus. To reconnect, reverse the process: turn on the breaker from the + charger output to the + battery bank bus first, then turn on the breaker or switch for the solar array.

Can a solar system carry power if a power supply is disconnected?

Active power supply components in a solar system should always be considered to be just that - active. They can still carry power even if other components are disconnected and removed. For example, even if you disconnect the solar panels, the charge controller can still have power on it from the battery.



What happens if a solar panel is disconnected?

The panel or solar panels are now disconnected and you can proceed with whatever work you need to do on the PV system. The best situation includes MC4 connectors and an isolation breaker between the panel and the rest of the circuit. This is illustrated below in Fig 2a. In this situation, things are safe and simple.

How do I reconnect my solar panels to the battery?

To reconnect your solar panels to the battery, first turn on the + to the charge controller. Then, turn on the + to the solar array. Be aware that some charge controllers may get confused (risk of damage to the charge controller in rare cases) if you connect the solar panels (under the sun) before connecting the battery bank.



Disconnecting solar panel from battery



[A Complete Guide on Disconnecting Solar Panels](#)

Having to disconnect your solar system panels is something you can realistically expect to do at some point. Hopefully, this article will help make the process a little ...

[How to Safely Disconnect Battery from Solar Panels](#)

Ensure optimal performance for your solar setup with our expert guide on battery disconnect with solar panel settings tailored for efficiency and safety.



[How to Disconnect Solar Panels , Fast & Safe Steps](#)

You can safely disconnect panels by powering down both the AC and DC circuits, covering the panels to stop generation, checking that voltage is near zero, and ...



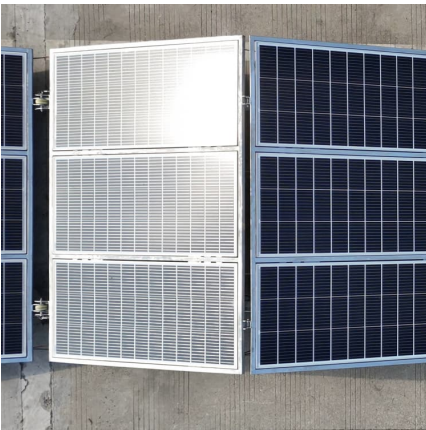
[A Complete Guide on Disconnecting Solar Panels](#)

Having to disconnect your solar system panels is something you can realistically expect to do at some point. Hopefully, this article will help make the process a little easier and safer for you.



[How to Disconnect Your Solar Panel \(Complete Steps\)](#)

Whether you're moving, performing repair and maintenance, or preparing for a big storm, disconnecting your Solar PV system first is always a good idea. In this post, we'll explain how to disconnect your solar panel and ...



Battery question and proper way to disconnect from panels

I normally do it at night when no power is coming into the panels but would like to do it during the day time. These are six volt batteries so when disconnected the panels are sending power to ...



Disconnecting solar panel

When removing from service: Disconnect the panels first. Disconnect the battery second. When returning to service: Connect the battery first. Connect the panels second. If you ...





[How To Disconnect Battery From Solar Panel](#)

This comprehensive guide outlines the safe process of disconnecting solar panels from batteries. It covers essential safety precautions, necessary tools, and a step-by ...



[Battery question and proper way to disconnect from ...](#)

I normally do it at night when no power is coming into the panels but would like to do it during the day time. These are six volt batteries so when disconnected the panels are sending power to the charge controller but no where for the power ...

[Proper way to disconnect system to store](#)

My question is, in what order do I disconnect everything in my set up without shorting or breaking anything? Also, for which parts do I disconnect the negative terminal ...



Can I Leave My Solar Panel Connected to a Battery? Safety Tips ...

Yes, you can leave your solar panels connected to the battery. First, disconnect the solar panels from the charge controller. If your system has a breaker, open it. Then, ...



How to Disconnect Battery from Solar Panel: A Step-by-Step ...

Learn how to safely disconnect your solar panel battery with our comprehensive guide. We outline essential safety precautions, necessary tools, and a step-by ...



[How To Disconnect Battery From Solar Panel](#)

This comprehensive guide outlines the safe process of disconnecting solar panels from batteries. It covers essential safety precautions, necessary tools, and a step-by-step process.



[How to Disconnect Your Solar Panel \(Complete Steps\)](#)

Whether you're moving, performing repair and maintenance, or preparing for a big storm, disconnecting your Solar PV system first is always a good idea. In this post, we'll ...





Proper way to disconnect system to store

My question is, in what order do I disconnect everything in my set up without shorting or breaking anything? Also, for which parts do I disconnect the negative terminal before the positive?

How to Disconnect Solar Panels , Fast & Safe Steps

You can safely disconnect panels by powering down both the AC and DC circuits, covering the panels to stop generation, checking that voltage is near zero, and unplugging the MC4 connectors.



Contact Us

For catalog requests, pricing, or partnerships, please visit:
<https://www.conrad.edu.pl>