

Does an energy storage power station belong to the category of construction engineering





Overview

An energy storage power station falls under the category of energy infrastructure, specifically renewable energy systems, electricity management solutions, and grid support technologies.

An energy storage power station falls under the category of energy infrastructure, specifically renewable energy systems, electricity management solutions, and grid support technologies.

BEI Construction has the engineering, electrical and implementation expertise required on energy storage construction projects (BESS) and can deliver battery-based energy storage as part of your solar or wind energy project or as backup power to support business processes.

This energy storage power station construction guide is your backstage pass to building systems that'll make Tesla's Powerwall look like a AA battery. Global energy storage deployments surged by 89% in 2023 (BloombergNEF), with projects ranging from California's 409MW Moss Landing facility to.

In the critical period of energy transformation today, the construction of energy storage power stations has become a key link in promoting sustainable energy development. Whether dealing with peak and valley regulation of the power grid or supporting stable output of renewable energy, energy.

Energy storage power stations involve multiple components, including engineering design and detailed planning processes. 2. The procurement of equipment constitutes a crucial element, ensuring the selection of optimal technologies. 3. Construction management is essential for overseeing project.

Energy storage power station engineering encompasses an intricate field dedicated to the development, design, and implementation of systems that are capable of storing energy for future use. 1. It integrates various technologies such as batteries, pumped hydro storage, and thermal storage systems. What is the primary architectural objective of a power station?

The prime architectural objective would be to ensure the best possible



appearance of the project, including buildings, structures and plant as seen from such viewpoints as are predominant in the public's perception of a power station, and to present a confident and consistent image as part of the CEGB's corporate design policy.

What are the laws & regulations relating to power station construction?

There are a wide variety of laws and regulations and licenses related to power plant construction procedures. Persons in charge of power station construction should have thorough familiarity with these laws and regulations. There are three categories of power station lift: passenger, goods and construction lifts.

How are power station foundations constructed?

The construction of the power station foundations is carried out in accordance with a detailed programme drawn up to provide the various foundations and general site works, in the sequence necessary to enable the building work and plant installation to proceed in accordance with the overall construction programme.

What makes a good power station design?

The best power station design is the one for which consent can be obtained, and to achieve this economically in landscape terms, a range of expertise and activities is required. The proposed site must be visually analysed by the appointed landscape architect, who will seek to minimise adverse effects of the project.

What is a good book on power station construction?

Advances in power station construction (Pergamon Press, 1986) is also by authors from the CEGB and describes a number of recently completed power stations—oil-fired, coal-fired, AGR and pumped storage—and one proposed pressurized water reactor station. The final chapter on project management is useful.

When will the construction work for a power station start?

1. When the process of the environment assessment is completed, the construction work for the power station will start. a. It is necessary to notify the government of the construction plan which describes the detailed design of power station facilities prior to the construction start. b.



Does an energy storage power station belong to the category of com



What unit does the energy storage power station belong to?

The energy storage power station primarily belongs to the realm of energy systems, specifically categorized under renewable energy technologies, electricity ...

[Energy storage power station belongs to new energy](#)

The report advocates for federal requirements for demonstration projects that share information with other U.S. entities. The report says many existing power plants that are being shut down ...



Energy Storage Power Station Construction Guide: Key Steps ...

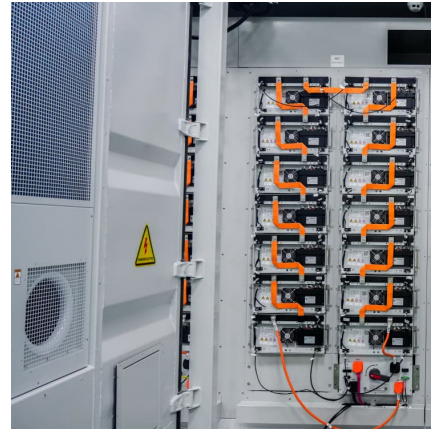
If you're reading this, chances are you're either an energy project developer, a civil engineer itching to build the next big thing, or a city planner trying to keep the lights on during peak hours.

Energy engineering

Energy engineering is a multidisciplinary field of engineering that focuses on optimizing energy systems, developing renewable energy technologies, and improving energy efficiency to



meet ...



2.5MW/5MWh Liquid-cooling Energy Storage System Technical ...

The energy storage batteries are integrated within a non-walk-in container, which ensures convenient onsite installation. The container includes: an energy storage lithium iron ...



What industry does energy storage power station belong to?

The energy storage power station pertains primarily to the energy sector, specifically within the subcategories of renewable energy and power generation. It serves a ...



[What does the civil construction of energy storage ...](#)

The civil construction of energy storage power stations involves multifaceted processes that require a highly specialized approach to ensure ...





Energy Storage Power Station Costs: Breakdown & Key Factors

Discover the true cost of energy storage power stations. Learn about equipment, construction, O& M, financing, and factors shaping storage system investments.



[Energy Storage & Battery System . BEI Construction](#)

BEI Construction has the engineering, electrical and implementation expertise required on energy storage construction projects (BESS) and can deliver battery-based energy storage as part of ...

Investigation of Pumped Storage Power Station Construction ...

The construction of pumped storage power stations is conducive to multi-energy complementarity and new energy consumption, and is an important means to achieve the ...



How are energy storage power stations produced? , NenPower

Energy storage power stations are created through a systematic process that includes 1. identifying suitable technologies, 2. site selection, 3. engineering and design, and 4. ...



Which major does solar energy for building construction belong to

The architectural community incorporates solar technology within its designs to create aesthetically pleasing and functional buildings. In addition, solar energy engineering ...



Research on development demand and potential of pumped storage power

To address the problem of unstable large-scale supply of China's renewable energy, the proposal and accelerated growth of new power systems has promoted the ...



What level does the energy storage power station belong to?

The energy storage power station generally falls into multiple classifications based on technology, capacity, and purpose. 1. These classifications include utility-scale ...





[Power Plant Engineering and Construction . MasTec](#)

One of the nation's leading contractors in the engineering, procurement and construction of power plants and renewable energy facilities including geothermal power plants, alternative fuel ...

[How is the energy storage power station project done?](#)

The energy storage power station project involves multiple key phases: 1) Site selection and feasibility studies, 2) Design and engineering processes, 3) Construction and ...



Detailed explanation of the development process of energy ...

With the improvement of electricity market rules and the large-scale integration of new energy, the construction and development process of energy storage power stations has become ...

[What is energy storage power station EPC . NenPower](#)

Energy storage power station EPC refers to 1. Engineering, Procurement, and Construction services associated with energy storage power plants, 2. A crucial aspect in ...



[What Is Construction Engineering? Types, Uses And ...](#)

Construction engineering is a specialized branch of civil engineering that focuses on the planning, design, management, and execution ...



POWER PLANT ENGINEERING (R17A0326)

A power plant is an industrial facility used to generate electric power with the help of one or more generators which converts different energy sources into electric power.



[U.S. Codes and Standards for Battery Energy Storage ...](#)

This document provides an overview of current codes and standards (C+S) applicable to U.S. installations of utility-scale battery energy storage systems. ...





What category does an energy storage power station belong to?

An energy storage power station falls under the category of energy infrastructure, specifically renewable energy systems, electricity management solutions, and grid support ...



What field does energy storage technology belong to?

Energy storage technology is fundamentally embedded in 1. energy systems, 2. renewable energy, 3. electrical engineering, 4. materials science. This discipline encompasses ...

Comprehensive review of energy storage systems technologies, ...

Energy storage is one of the hot points of research in electrical power engineering as it is essential in power systems. It can improve power system s...



What kind of project does the energy storage power station belong ...

1. Energy storage power stations are integral components of renewable energy infrastructure, essential for enhancing grid stability and efficiency. 2. These facilities belong to ...



What industry does the energy storage power station...

The energy storage power station primarily belongs to the renewable energy sector, energy management services, electricity generation ...



Power Engineering: Shaping the Future of Energy Systems

Power engineering, a vital branch of electrical engineering, focuses on the generation, transmission, distribution, and utilization of electric power. It ensures that electricity is delivered ...



Technologies for Energy Storage Power Stations Safety ...

As large-scale lithium-ion battery energy storage power facilities are built, the issues of safety operations become more complex. The existing difficulties revolve around ...



Contact Us

For catalog requests, pricing, or partnerships, please visit:
<https://www.conrad.edu.pl>