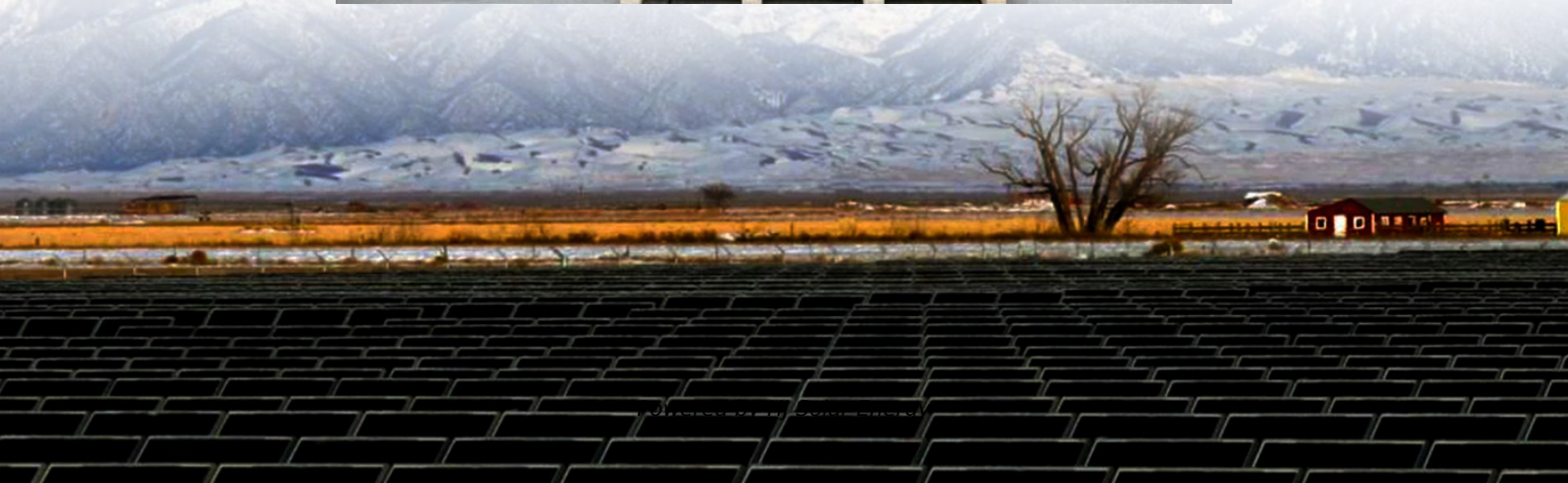


# **Does industrial and commercial energy storage belong to the user side**





## Overview

---

Industrial and commercial energy storage is a typical application of distributed energy storage systems on the user side. It is characterized by being close to the distributed photovoltaic power source and load center.

Industrial and commercial energy storage is a typical application of distributed energy storage systems on the user side. It is characterized by being close to the distributed photovoltaic power source and load center.

However, industrial and commercial users consume a large amount of electricity and have high requirements for energy quality; therefore, it is necessary to configure distributed energy storage. Based on this, a planning model of industrial and commercial user-side energy storage considering.

Within the field of energy storage, there are two primary domains: commercial and industrial energy storage and large-scale energy storage facilities. These two application areas differ significantly in terms of scale, purpose, and technology. Each domain provides solutions for different types of.

Industrial and commercial energy storage is the application of energy storage on the load side, and the load-side power regulation is realized through the battery charging and discharging strategy. Industrial and commercial energy storage: Distributed energy storage different from grid-side energy.

Commercial and Industrial energy storage is one of the main types of user-side energy storage systems, which can maximize the self-consumption rate of photovoltaics, reduce the electricity expenses of industrial and commercial owners, and help enterprises save energy and reduce emissions. The.

Commercial and Industrial (C&I) Energy Storage, fully referred to as commercial and industrial user-side energy storage, is an energy storage system specifically deployed in scenarios such as factories, industrial parks, shopping malls, and office buildings.

The capacity of mainstream domestic industrial and commercial energy storage products is 170-220kWh, and it is equipped with a power configuration



of 70-110kW, forming a full charge and discharge energy storage time of 2 hours. The capacity design is similar to SmartPropel Energy's Powerwall. Should industrial and commercial users arrange energy storage?

Industrial and commercial users consume large amounts of electricity and have high requirements for a stable power supply. Therefore, it is necessary to encourage industrial and commercial users to arrange energy storage, and how to make reasonable planning is the main problem.

Do industrial and commercial users need distributed energy storage?

However, industrial and commercial users consume a large amount of electricity and have high requirements for energy quality; therefore, it is necessary to configure distributed energy storage. Based on this, a planning model of industrial and commercial user-side energy storage considering uncertainty and multi-market joint operation is proposed.

How to plan industrial and commercial user-side energy storage (ICUs-es)?

When planning the industrial and commercial user-side energy storage (ICUS-ES) system, it is necessary to comprehensively consider the economy and environment of the system. Thus, it can ensure that the planning results of industrial and commercial user-side energy storage are more in line with the actual situation.

What is a user-side energy storage planning and operation simulation?

In the industrial and commercial user-side energy storage planning and operation simulation, the analysis will be based on the IEEE 30-node system, as shown in Figure 1. The electrical load on the industrial and commercial user side will also change with time. User load can be divided according to seasonal changes.

What is the planning model for industrial and commercial user-side energy storage?

Based on this, a planning model of industrial and commercial user-side energy storage considering uncertainty and multi-market joint operation is proposed. Firstly, the total cost of the user-side energy storage system in the whole life cycle is taken as the upper-layer objective function, including investment cost, operation, and maintenance cost.

How to plan the energy storage system on the user side?

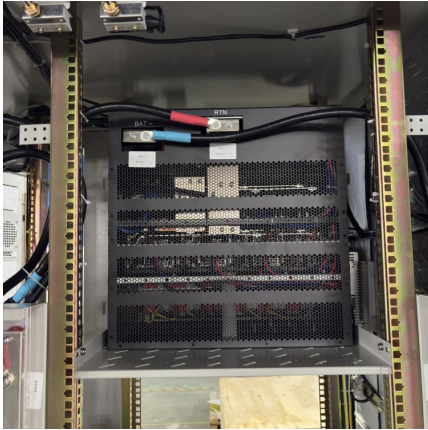


For the planning of the energy storage system on the user side, the main problems are: Li D et al. [ 9] consider the annual comprehensive cost of installing the energy storage system and the daily electricity charge of users and establish a two-level optimization model.



## Does industrial and commercial energy storage belong to the user side

---



### Customized industrial and commercial energy storage systems

Recently, the energy storage industry has been very popular, and industrial and commercial energy storage is the "focus of the focus". Everyone knows that energy storage is ...

### What is a Commercial and Industrial Energy Storage System?

Commercial and Industrial energy storage is one of the main types of user-side energy storage systems, which can maximize the self-consumption rate of photovoltaics, ...



### What kind of project does user-side energy storage belong to

What is user-side energy storage? 1. Introduction User-side energy storage mainly refers to the application of electrochemical energy storage systems by industrial, commercial, residential, or ...

### Industrial and commercial user-side energy storage system

What is a user-side energy storage planning and operation simulation? In the industrial and commercial user-side energy storage planning



and operation simulation, the analysis will be ...



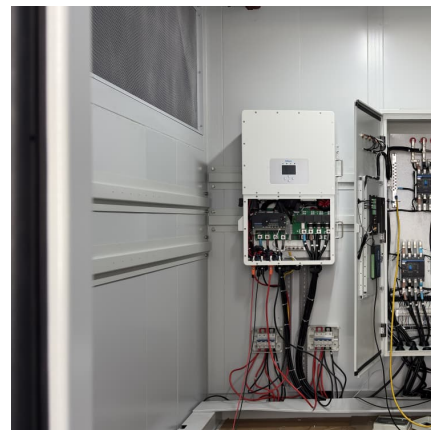
### Commercial and Industrial (C&I) Storage Systems

These companies invest in constructing energy storage assets and manage their operation and maintenance. In this scenario, industrial and commercial users pay the ...



### INDUSTRIAL AND COMMERCIAL ENERGY STORAGE

Commercial and Industrial energy storage is one of the main types of user-side energy storage systems, which can maximize the self-consumption rate of photovoltaics, reduce the electricity ...



### **Industrial Energy Storage Review**

Mechanical energy storage systems are often large-scale and have low environmental impacts compared to alternative storage methods--with pumped hydro storage systems being the most ...





### Optimal configuration and operation for user-side energy storage

Energy storage systems play an increasingly important role in modern power systems. Battery energy storage system (BESS) is widely applied in user-side such as ...



### [What does user-side energy storage mean? . NenPower](#)

Adopting user-side energy storage systems serves as a cornerstone in the ongoing transformation of energy consumption patterns. It empowers individuals and ...

### [Industrial and commercial energy storage vs energy ...](#)

The article first introduces the concept of industrial and commercial energy storage and energy storage power stations, outlining their respective roles in ...



### [Commercial & Industrial Energy Storage \(C&I\)](#)

About C&I energy storage is a system primarily designed for commercial and industrial applications, such as manufacturing plants, office buildings, schools, ...



### What is Industrial and Commercial Energy Storage and Common ...

User-side energy storage can be further divided into industrial and commercial energy storage and household energy storage. In essence, industrial and commercial energy storage falls ...

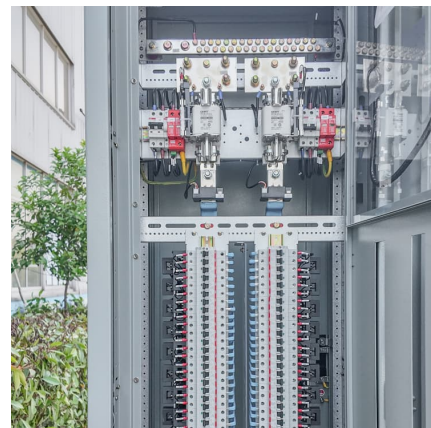


### What is commercial and industrial energy storage?

User side energy storage can be further divided into industrial and commercial energy storage and household energy storage. In short, industrial and commercial energy ...

### What is Industrial and Commercial Energy Storage and Common ...

I. Industrial and Commercial Energy Storage  
"Industrial and commercial energy storage" refers to energy storage systems used in industrial or commercial facilities. From the perspective of end ...





### [Industrial and commercial energy storage vs energy ...](#)

This article provides a comprehensive comparison between industrial and commercial energy storage systems and energy storage power station ...

### **Research on Industrial and Commercial User-Side Energy ...**

However, industrial and commercial users consume a large amount of electricity and have high requirements for energy quality; therefore, it is necessary to configure ...



### **(PDF) Research on Industrial and Commercial User-Side Energy Storage**

Based on this, a planning model of industrial and commercial user-side energy storage considering uncertainty and multi-market joint operation is proposed.

### **Industrial and commercial user-side energy storage system**

What is user-side energy storage? Industrial and commercial users pay energy service companies for electricity costs. At the same time, user-side energy storage has achieved multi-scenario ...



### Industrial and Commercial Energy Storage VS Large-Scale ...

With the increase in large industrial users, the capacity of industrial and commercial energy storage can reach above MW level, and the system configuration is ...



### The user-side energy storage investment under subsidy policy

User-side energy storage mainly refers to the application of electrochemical energy storage systems by industrial, commercial, residential, or independent powerplant ...



### Analysis on the development trend of user-side energy storage

As the price of industrial and commercial energy storage equipment continues to decline and its technical performance improves, the industrial and commercial user-side ...





### Commercial and Industrial Energy Storage Systems Explained

Explore the essential components of commercial and industrial energy storage systems. Learn about energy capacity, battery types, cycle life, inverters, grid connections, ...



### Dyness Knowledge , Opportunities and challenges for C& I energy ...

Industrial and commercial energy storage is the application of energy storage on the load side, and the load-side power regulation is realized through the battery charging and ...

### Do you know how much money industrial and commercial energy storage ...

During the lease period, the ownership of the energy storage equipment belongs to the financial lessor and the owner with the right to use it. After expiration, the owner can ...



### Energy storage in China: Development progress and business ...

Even though several reviews of energy storage technologies have been published, there are still some gaps that need to be filled, including: a) the development of ...



### What is user-side energy storage?

The main body of energy storage at the power consumption end is power users, mainly including industrial and commercial users and household users. The development of ...



### Which category does commercial and industrial energy ...

Commercial and Industrial energy storage is one of the main types of user-side energy storage systems, which can maximize the self-consumption rate of photovoltaics, reduce the electricity ...

### Commercial Energy Storage

1. Industrial and Commercial Energy Storage  
"Industrial and commercial energy storage" pertains to energy storage systems utilized at the terminal end of industrial or commercial applications. ...





## Contact Us

---

For catalog requests, pricing, or partnerships, please visit:  
<https://www.conrad.edu.pl>