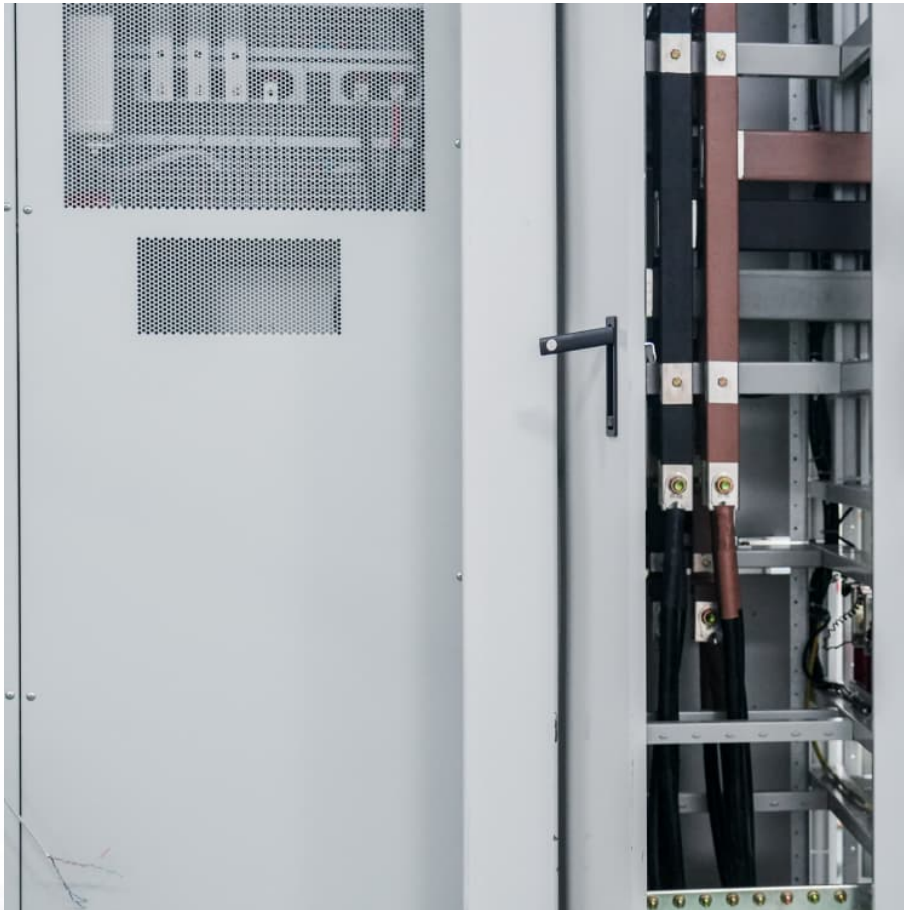


Energy storage equipment requires water pumps





Overview

To store energy, water is pumped from the lower reservoir to the upper reservoir during low net electricity demand or when energy supply exceeds demand. Most PSH plants use reversible pumps/turbines; however, some designs use separate pumps and turbines.

To store energy, water is pumped from the lower reservoir to the upper reservoir during low net electricity demand or when energy supply exceeds demand. Most PSH plants use reversible pumps/turbines; however, some designs use separate pumps and turbines.

Pumped water storage (PWS) serves as a pivotal component in energy management and grid stability. This process involves two reservoirs located at different altitudes. Electricity production occurs during peak demand times by releasing water from the upper reservoir to the lower one, causing.

PSH functions as an energy storage technology through the pumping (charging) and generating (discharging) modes of operation. A PSH facility consists of an upper reservoir and a lower reservoir, which are connected by water conveyances (e.g., penstocks, tunnels). To generate electricity, water is.

The United States needs new pumped storage to meet its long-duration energy storage needs and support its federal and state renewable energy targets. This report provides an analysis of PSH's evolution and technological advancements and suggests strategic actions to overcome existing barriers.

Let's break down the key equipment required. Think of a pumped storage plant as a giant water battery. Here's what you'll find under the hood: 300-ton generator motors (heavier than 200 SUVs combined!) 1. The Heartbeat: Pump-Turbine Units These dual-purpose machines flip between energy storage mode.

Pumped storage hydropower (PSH) is a form of clean energy storage that is ideal for electricity grid reliability and stability. PSH complements wind and solar by storing the excess electricity they create and providing the backup for



when the wind isn't blowing, and the sun isn't shining. PSH.

Pumped storage systems require specific types of equipment to function efficiently, including 1. Pumping mechanisms, 2. Turbines, 3. Reservoirs, 4. Generators. Each of these components plays a critical role in the overall operation of a pumped storage facility, ensuring energy can be stored during. What is a pumped storage facility?

Pumped storage facilities are built to push water from a lower reservoir uphill to an elevated reservoir during times of surplus electricity. In pumping mode, electric energy is converted to potential energy and stored in the form of water at an upper elevation, which is why it is sometimes called a "water battery".

Why is pumped storage hydropower important?

As the global community accelerates its transition toward renewable energy, the importance of reliable energy storage becomes increasingly evident. Among the various technologies available, pumped storage hydropower (PSH) stands out as a cornerstone solution, ensuring grid stability and sustainability.

How HREs can be used for isolated water pumping?

Recent decades have seen the integration of sophisticated technologies like AI-driven energy optimization and hybrid storage solutions, ensuring greater reliability and sustainability. The initial concept of combining HRESs for isolated water pumping emerged in the late 20th century, primarily focusing on PV solar and wind energy (WE).

How can energy storage improve water pumping performance?

Energy storage elements play a crucial role in optimizing the performance and reliability of HRES used for water pumping. By integrating various storage technologies, these systems can effectively manage the intermittent nature of RESs such as solar and wind.

What is pumped storage & how does it work?

Pumped storage today makes up 97 percent of utility-scale energy storage in the United States at 42 sites with a total of 23 GW of capacity. Pumped storage facilities are built to push water from a lower reservoir uphill to an elevated reservoir during times of surplus electricity.

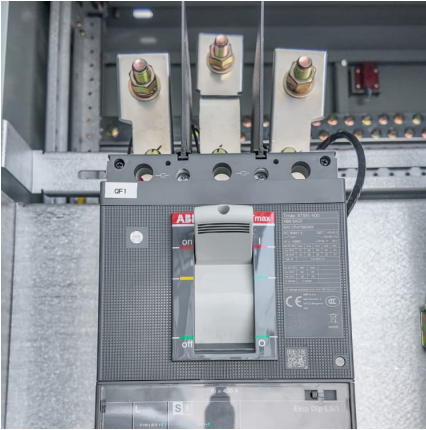


What is a closed-loop pumped storage hydropower system?

With closed-loop PSH, reservoirs are not connected to an outside body of water. Open-loop pumped storage hydropower systems connect a reservoir to a naturally flowing water feature via a tunnel, using a turbine/pump and generator/motor to move water and create electricity.



Energy storage equipment requires water pumps



Pumped hydropower energy storage

Pumped hydroelectric storage facilities store energy in the form of water in an upper reservoir, pumped from another reservoir at a lower elevation. During ...

Improving Thermal Energy Storage to Reduce Installation ...

Sensible Energy Storage: Energy stored in the temperature difference between hot and cold. Single-pass: A heat pump water heating system that heats water from cold entering city water ...



CENTRAL CENTRAL HEAT HEAT PUMP PUMP WATER ...

A lower primary storage water temperature can allow heat pumps to operate more efficiently but may require a larger storage volume. More heat pumps are required in this configuration, which ...



New Energy Storage "Water Battery" Breakthrough

Plain water and a new type of turbine are the keys to a pumped hydro energy storage system aimed at bringing more wind and solar online.



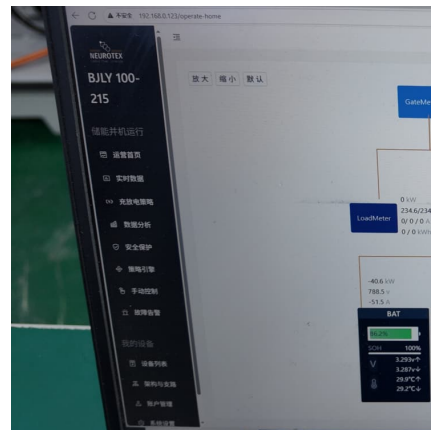
[Renewable Energy Water Pumping Systems Handbook](#)

The availability of water from a PV pump over the course of a year also depends on several factors, such as borehole yield (the capacity of the water resource), borehole recovery rate, ...



Design Selection and Installation of Solar water Pumping ...

This distance is required for determining the length of water pipe required to move the water from the source to the storage tank. It is also used to determine the diameter of the water pipe ...



Pumped Hydro Energy Storage

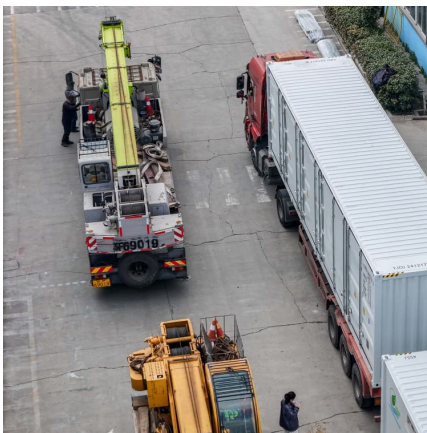
The reservoirs are generally located above ground and are filled with fresh water, but some unconventional applications adopt the sea as lower reservoir (seawater pumped hydro energy ...





Technology Strategy Assessment

A pump-back PSH plant can utilize natural inflows to the upper reservoir to produce electricity as a conventional hydropower plant but also can pump the water back to the upper reservoir for ...



Improving energy efficiency in water supply systems with pump

Water supply systems have a significant environmental and energetic impact due to the large amount of energy consumed in water pumping and water losses. The safe and ...

[DOE ESHB Chapter 9: Pumped Hydroelectric Storage](#)

Abstract Pumped hydroelectric storage (PHS) is the most widely used electrical energy storage technology in the world today. It can offer a wide range of services to the modern-day power ...



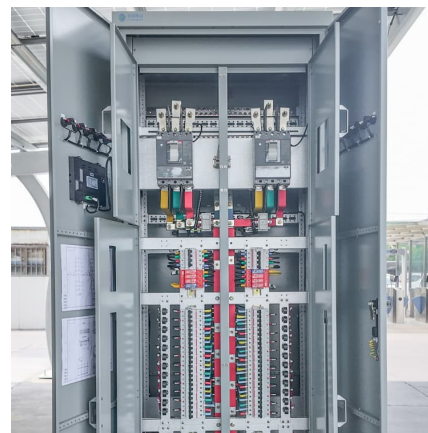
[Pumped Storage Hydropower: Advantages and Disadvantages](#)

Pumped storage hydropower is a type of hydroelectric power generation that plays a significant role in both energy storage and generation. At its core, you've got two reservoirs, one up high, ...



2022 Single-Family Electric Ready

In addition to electric ready requirements, the 2022 Energy Code now requires that all single-family buildings with one or two dwelling units must be energy ...



[Pumped Storage Hydropower: Advantages and ...](#)

Pumped storage hydropower is a type of hydroelectric power generation that plays a significant role in both energy storage and generation. At its core, ...

[Decarbonizing HVAC and Water Heating in Commercial ...](#)

Electrification Options for HVAC and Water Heating Residential, commercial, and industrial facilities use a wide variety of HVAC and water heating technologies. While heat pump ...





[Pumped storage hydropower: Water batteries for solar...](#)

Pumped storage hydropower (PSH) is a form of clean energy storage that is ideal for electricity grid reliability and stability. PSH complements wind and solar by ...

[Air Conditioning with Thermal Energy Storage](#)

Abstract Air-Conditioning with Thermal Energy Storage (TES) for space cooling, also known as cool storage, chill storage, or cool thermal storage, is a cost saving ...



Standards and Test Procedures

The Department of Energy (DOE) establishes energy-efficiency standards for certain appliances and equipment, and currently covers more than 70 different products. Authority to undertake ...

[How to Improve Pumped Hydro Storage Efficiency](#)

How Does Pumped Hydro Storage Work? Pumped hydro storage power plants are reversible hydroelectric facilities designed to capture and store electricity until it is required. ...



Technology Strategy Assessment

PSH functions as an energy storage technology through the pumping (charging) and generating (discharging) modes of operation. A PSH facility consists of an upper reservoir and a lower ...



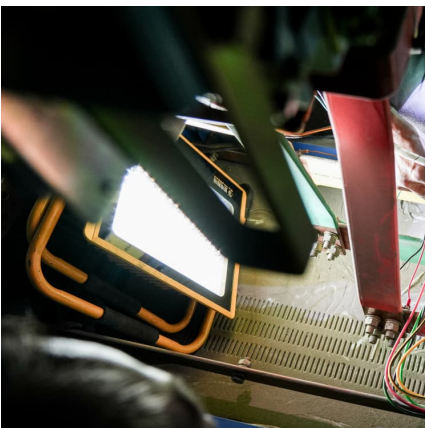
Comprehensive Chilled-Water System Design

Trane Design Assist™, p. 62 Chilled-water systems provide customers with flexibility for meeting first cost and efficiency objectives, while centralizing maintenance and complying with or ...



Heat Pump Water Heater Guide

HPWHs extract heat from the surrounding environment and transfer it into the water inside the tank. They are electrically powered and deliver hot water up to five times more efficiently than ...





[Do energy storage projects require water pumps](#)

Pumped storage projects store and generate energy by moving water between two reservoirs at different elevations. At times of low electricity demand, like at night or on ...

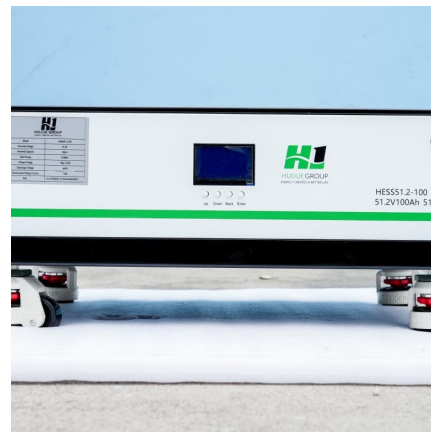


Pumped storage hydropower: Water batteries for solar and wind

Pumped Storage Hydropower Water batteries for the renewable energy sector Pumped storage hydropower (PSH) is a form of clean energy storage that is ideal for electricity grid reliability ...

Pumped hydro systems could help solve the challenge of renewable energy

Pumped hydro systems require two reservoirs of water - one higher in elevation than the other. When solar and wind energy are plentiful, that power can be used to pump ...



[What Is Pumped Hydro Storage, and How Does It ...](#)

A type of hydroelectric energy storage, it's the only commercially viable method of long-term storage. Pumped hydro storage comprises almost all (96%) of ...



Pump Systems

Dramatic energy and cost savings can be achieved in pump systems by applying best energy management practices and purchasing energy-efficiency equipment. Use the software tools, ...



[A Review of Pumped Hydro Storage Systems](#)

With the increasing global demand for sustainable energy sources and the intermittent nature of renewable energy generation, effective energy storage systems have become essential for grid ...



Contact Us

For catalog requests, pricing, or partnerships, please visit:
<https://www.conrad.edu.pl>