

Energy storage power station layout requirements





Overview

Energy storage power stations require several critical components for efficient design, 1. robust infrastructure that can support energy demands, 2. advanced technology for energy conversion and management, 3. environmental considerations particularly in location and.

Energy storage power stations require several critical components for efficient design, 1. robust infrastructure that can support energy demands, 2. advanced technology for energy conversion and management, 3. environmental considerations particularly in location and.

Energy storage power stations require several critical components for efficient design, 1. robust infrastructure that can support energy demands, 2. advanced technology for energy conversion and management, 3. environmental considerations particularly in location and sustainability efforts, and 4.

Energy storage power stations require several critical components for efficient design, 1. robust infrastructure that can support energy demands, 2. advanced technology for energy conversion and management, 3. environmental considerations particularly in location and sustainability efforts, and 4.

Energy storage power stations require several critical components for efficient design, 1. robust infrastructure that can support energy demands, 2. advanced technology for energy conversion and management, 3. environmental considerations particularly in location and sustainability efforts, and 4.

Energy storage power stations require several critical components for efficient design, 1. robust infrastructure that can support energy demands, 2. advanced technology for energy conversion and management, 3. environmental considerations particularly in location and sustainability efforts, and 4.

Energy storage power stations require several critical components for efficient design, 1. robust infrastructure that can support energy demands, 2. advanced technology for energy conversion and management, 3. environmental considerations particularly in location and sustainability efforts, and 4.



power installed capacity increase by 4.15 million and 5.5 million kilowatts.

These site requirements are pivotal in ensuring the safety, efficiency, and longevity of the system. In this blog, we will explore the key factors to consider when selecting a site for a BESS installation. The first step in setting up a BESS is ensuring compliance with local building codes and. Are battery energy storage systems the future of grid stability?

Battery Energy Storage Systems represent the future of grid stability and energy efficiency. However, their successful implementation depends on the careful planning of key site requirements, such as regulatory compliance, fire safety, environmental impact, and system integration.

What is a battery energy storage system?

Telkes In recent years, Battery Energy Storage Systems (BESS) have become an essential part of the energy landscape. With a growing emphasis on renewable energy sources like solar and wind, BESS plays a crucial role in stabilizing the power grid and ensuring a reliable supply of electricity.

Why do we need a battery energy storage system?

Demand for energy storage is on the rise. The increase in extreme weather and power outages also continue to contribute to growing demand for battery energy storage systems (BESS). As a result, there are many questions about sizing and optimizing BESS to provide either energy, grid ancillary services, and/or site backup and blackstart capability.

Can a battery storage system increase power system flexibility?

sive jurisdiction.—2. Utility-scale BESS system description— Figure 2.Main circuit of a BESSBattery storage systems are emerging as one of the potential solutions to increase power system flexibility in the presence of variable energy resources, suc.

Why do energy storage systems need security measures?

Given the scale of energy storage systems and the value of the equipment involved, security is another top concern for BESS installations. These systems are often located in remote or semi-isolated areas, making them vulnerable to theft, vandalism, or sabotage. Therefore, implementing strong physical security measures is essential.



Energy storage power station layout requirements



Optimal siting of shared energy storage projects from a ...

In the first stage, the power attraction model is established to determine the macroscopic layout of shared energy storage. In the second stage, a large-scale group ...

[Solar Photovoltaic: SPECIFICATION, CHECKLIST AND...](#)

The RERH specifications and checklists take a builder and a project design team through the steps of assessing a home's solar resource potential and defining the minimum structural and ...



Technologies for Energy Storage Power Stations Safety ...

As large-scale lithium-ion battery energy storage power facilities are built, the issues of safety operations become more complex. The existing difficulties revolve around ...



[Battery storage power station - a comprehensive guide](#)

This article provides a comprehensive guide on battery storage power station (also known as energy storage power stations). These facilities



play a crucial ...



[Four Overlooked BESS Project Requirements](#)

Uncover the often-overlooked requirements for Battery Energy Storage System's (BESS), ensuring successful planning and compliance in energy projects

2.5MW/5MWh Liquid-cooling Energy Storage System Technical ...

Project Overview The project features a 2.5MW/5MWh energy storage system with a non-walk-in design which facilitates equipment installation and maintenance, while ensuring long-term safe ...



BESS Methodology

Abstract This methodology describes the process to design the layout of a battery energy storage system in the software pvDesign. The authors of this methodology have proposed the following ...



[Capacity optimization strategy for gravity energy](#)

The integration of renewable energy sources, such as wind and solar power, into the grid is essential for achieving carbon peaking and ...



Enhancing modular gravity energy storage plants: A hybrid ...

The large-scale integration of intermittent renewable energy sources poses significant challenges to grid flexibility and stability. Gravity energy storage offers a viable ...

[Battery Energy Storage System Design: Key ...](#)

Conclusion Designing an effective battery energy storage system involves careful consideration of capacity requirements, battery types, system ...



Capacity optimization strategy for gravity energy storage stations

The integration of renewable energy sources, such as wind and solar power, into the grid is essential for achieving carbon peaking and neutrality goals. However, the ...



How to Design a Grid-Connected Battery Energy Storage System

Introduction A Battery Energy Storage System (BESS) significantly enhances power system flexibility, especially in the context of integrating renewable energy to existing ...



Microsoft Word

Under the Energy Storage Safety Strategic Plan, developed with the support of the Department of Energy's Office of Electricity Delivery and Energy Reliability Energy Storage Program by ...

Distributed Photovoltaic Systems Design and Technology ...

Excess power can be accumulated with energy storage systems such as pumped hydro, but conventional energy storage systems respond much more slowly than the load changes, so ...





The latest standards for energy storage power station layout requirements

This paper describes a configuration of a multi-fuel motor vehicle fuelling station and provides a detailed breakdown of the codes and standards requirements. The multi-fuel station would ...

How many PCS are needed for energy storage power stations?

The number of PCS needed for energy storage power stations depends on multiple factors, including the desired energy storage capacity, the application usage, system ...

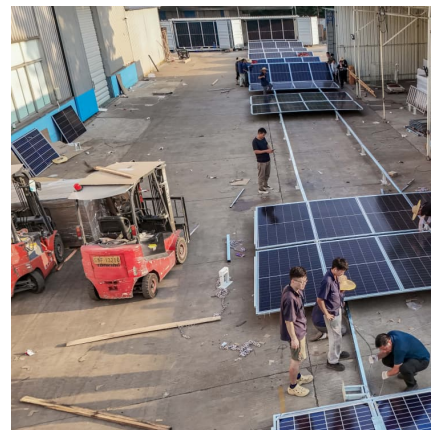


[Energy Storage Systems \(ESS\) and Solar Safety](#)

NFPA is keeping pace with the surge in energy storage and solar technology by undertaking initiatives including training, standards development, and research so that various stakeholders ...

Top five battery energy storage system design essentials

Share Demand for energy storage is on the rise. The increase in extreme weather and power outages also continue to contribute to growing ...





[Best Practices for Operation and Maintenance of ...](#)

This work was authored by the National Renewable Energy Laboratory, operated by Alliance for Sustainable Energy, LLC, for the U.S. Department of Energy (DOE) under Contract No. DE ...

Pumped-storage hydroelectricity

Ludington Pumped Storage Power Plant in Michigan on Lake Michigan Pumped-storage hydroelectricity (PSH), or pumped hydroelectric energy storage (PHES), is a type of ...



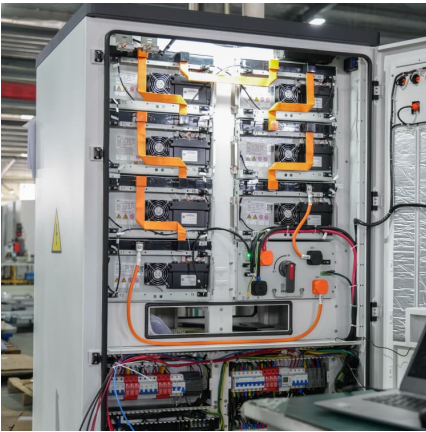
the latest requirements for energy storage power station layout

This article researches the layout scheme of energy storage stations considering different applications, such as suppressing new energy fluctuation, supporting reactive power, as well ...

[A performance evaluation method for energy storage](#)

In recent years, China's new energy storage application on a large scale has shown a good development trend; a variety of energy storage technologies are widely used in renewable ...





What are the Essential Site Requirements for Battery Energy ...

Learn about site selection, grid interconnection, permitting, environmental considerations, safety protocols, and optimal design for energy efficiency. Ideal for developers ...

Energy Storage: An Overview of PV+BESS, its Architecture, ...

Battery energy storage can be connected to new and existing solar via DC coupling Battery energy storage connects to DC-DC converter. DC-DC converter and solar are ...



What is the input voltage of the energy storage power station?

The input voltage of an energy storage power station varies based on specific design parameters, applications, and technologies. 1. Common ranges include 110V to 400kV, ...

A planning scheme for energy storage power station based on ...

To reduce the waste of renewable energy and increase the use of renewable energy, this paper proposes a provincial-city-county spatial scale energy storage configuration ...



Utility-scale battery energy storage system (BESS)

This reference design focuses on an FTM utility-scale battery storage system with a typical storage capacity ranging from around a few megawatt-hours (MWh) to hundreds of MWh.



Best Practices Guide for Energy-Efficient Data Center Design

Executive Summary This guide provides an overview of best practices for energy-efficient data center design which spans the categories of information technology (IT) systems and their ...



Contact Us

For catalog requests, pricing, or partnerships, please visit:
<https://www.conrad.edu.pl>