

# Eufy solar camera battery life





## Overview

---

Once you fully charge Eufy cameras, they can last up to 180 days. But, keep in mind that battery life may vary depending on how long you record, the resolution settings you choose, how many motion detections occur, and the temperature outside.

Once you fully charge Eufy cameras, they can last up to 180 days. But, keep in mind that battery life may vary depending on how long you record, the resolution settings you choose, how many motion detections occur, and the temperature outside.

Once you fully charge Eufy cameras, they can last up to 180 days. But, keep in mind that battery life may vary depending on how long you record, the resolution settings you choose, how many motion detections occur, and the temperature outside. Factors influencing the lifespan of a Eufy camera can.

Set the camera's "Working Mode" to "Optimal Battery Life", which will help strike the right balance between functionality and energy conservation. This mode can significantly extend battery life by adjusting performance settings to minimize power consumption. 4. Chase the Winter Sun Even in winter.

Depends on your battery camera model and the frequency of motion triggers. I explicitly use eufy 2K Pros, and they are advertised to last up to 365 days on 1 charge. The reality is my front of house camera lasts 6 months, and my backyard one lasts 10 months before needing charging. This is simply.

☐☐ Eufy S3 Pro Solar Security Camera → Buy on eufy:  
<https://eufyofficial.com/T88921W1PFG6> → Buy on Amazon:  
<https://eufyofficial.com/T88921W1PCol> → Explore more eufy security cameras:  
<https://eufyofficial.com/T88921W1g6Ex> ✂ Win FREE Solar Gear ✂ → New Winners Every Month, Enter Here:.

Other detailed adjustments affect battery life. 1.Ensure a strong Wi-Fi signal: It is a way to continuously save power for your devices. Especially for those with larger homes or multiple floors, please ensure a stable connection. 2.The colder season poses challenges to battery-powered devices.



We have identified the most common solar device questions asked by eufy users, and to make your life and security easier, we're answering them right here. 4 Tips to Maximizing the Charging Efficiency and Improving the Battery of a eufy Solar-Powered Camera Does eufy have a good battery life?

However, a major drawback of wireless cameras is that battery life is limited, which can be a problem. This is not specific to Eufy, this is for all battery-operated cameras. Eufy specifies either a 365-day, 180-day, or 120-day battery life for all of its products. This is quite impressive!.

Are eufy security cameras battery powered?

eufy's battery-powered security cameras offer unmatched convenience, crystal-clear footage, and worry-free performance in any weather. With easy installation, year-long battery life, and advanced AI detection, our battery-powered cameras are designed to secure your home effortlessly.

How long do eufy cameras last?

Once you fully charge Eufy cameras, they can last up to 180 days. But, keep in mind that battery life may vary depending on how long you record, the resolution settings you choose, how many motion detections occur, and the temperature outside. Factors influencing the lifespan of a Eufy camera can vary depending on various aspects.

Are eufy wireless cameras good?

Eufy's wireless, battery-powered cameras offer great flexibility at a good price. However, a major drawback of wireless cameras is that battery life is limited, which can be a problem. This is not specific to Eufy, this is for all battery-operated cameras. Eufy specifies either a 365-day, 180-day, or 120-day battery life for all of its products.

Does eufycam have a good battery life?

Eufycam refers to the first generation Kickstarter camera, so I'm presuming you've purchased a newer/recent model. In general, battery life has improved significantly from the original design. Like, do you find it lasts as long as they claim?

Flat no.

How to improve battery life on eufysecurity?



The most obvious and user-friendly solution is to toggle with the “ Power Management ” settings within the app for the device and choose “ Optimal Battery Life.” Be careful if you choose “Customize Recording” as it notes: Battery Life decreases significantly in this mode. 4. Via the Settings -> Motion Detection in the EufySecurity app



## Eufy solar camera battery life

---



### Essential FAQs for Solar Devices

We have identified the most common solar device questions asked by eufy users, and to make your life and security easier, we're answering them right here. 4 Tips to ...

### [How Long Do Eufy Cameras Last? \(Revealed!\) - Scan Techy](#)

For Eufy cameras with battery-powered functionality, the lifespan is influenced by the battery's capacity and the number of charging cycles it undergoes. Over time, batteries naturally ...



### Best tips on how to extend your Eufy camera's battery life

However, with a little practice, it is possible to achieve Eufy's stated battery life. Here are some good tips on how to maximize the battery life of your Eufy security camera.

### How long does the battery typically last on EufyCam? : ...

Ideally, you want to keep the battery in the 50%-80% range to optimize battery life. This varies by battery manufacturer and design, so



above half and under 80% is a good ...



#### 4 Tips to Extend Battery Life

Welcome to [eufy Essential Vol.06]. In this episode, we will provide detailed tips and tricks on extending battery life. Through our community, we found that many friends still ...

#### [Extend Your Solar Camera Battery Life this Winter](#)

Set the camera's "Working Mode" to "Optimal Battery Life", which will help strike the right balance between functionality and energy conservation. This mode can significantly extend battery life by adjusting performance ...



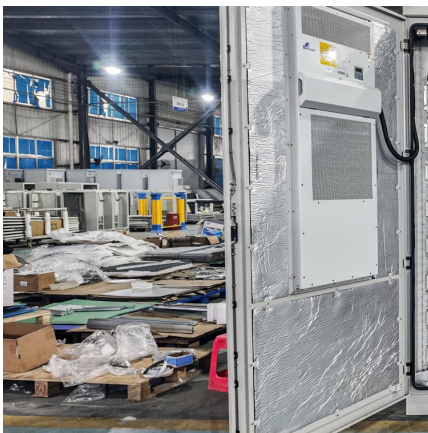
#### [How Long Do Eufy Cameras Last? \(Revealed!\) -](#)

For Eufy cameras with battery-powered functionality, the lifespan is influenced by the battery's capacity and the number of charging cycles it undergoes. Over time, batteries naturally degrade, and frequent charging cycles can further impact ...



### [How long does the battery typically last on EufyCam?](#)

Ideally, you want to keep the battery in the 50%-80% range to optimize battery life. This varies by battery manufacturer and design, so above half and under ...



### **Essential FAQs for Solar Devices**

We have identified the most common solar device questions asked by eufy users, and to make your life and security easier, we're answering them right here. 4 Tips to Maximizing the Charging Efficiency and Improving ...

### [Battery Powered Security Camera . Battery Camera ...](#)

??8%??· However, eufy's high-quality battery surveillance cameras supporting solar energy can provide forever power by lasting 180 days or a year on a single charge, providing long-lasting and reliable surveillance for your ...



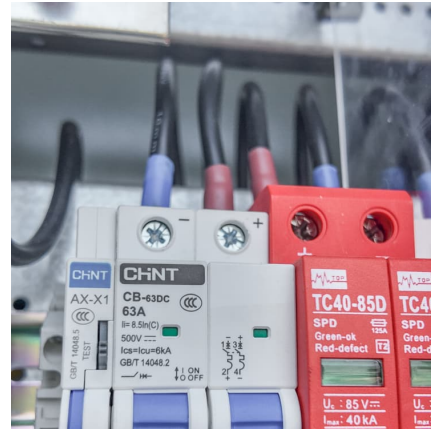
### [eufy Support . Troubleshooting & Customer Service](#)

For S330 eufyCam 3, a fully charged battery can last up to one year. Additionally, eufyCam 3 has a built-in solar panel, which can automatically recharge the battery if the camera is able to ...



### [Extend Your Solar Camera Battery Life this Winter](#)

Set the camera's "Working Mode" to "Optimal Battery Life", which will help strike the right balance between functionality and energy conservation. This mode can significantly ...

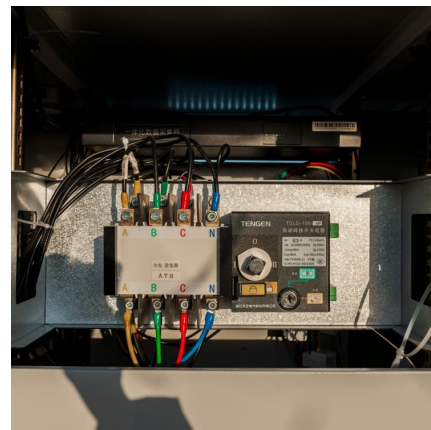


### **Eufy Camera Battery Life: How Long It Lasts On One Charge And ...**

In summary, the Eufy camera battery life on a single charge can vary significantly, with a general range of 6 to 12 months. Users should consider their specific usage patterns ...

### [Battery Powered Security Camera , Battery Camera 2025](#)

However, eufy's high-quality battery surveillance cameras supporting solar energy can provide forever power by lasting 180 days or a year on a single charge, providing long-lasting and ...



## Contact Us

For catalog requests, pricing, or partnerships, please visit:  
<https://www.conrad.edu.pl>