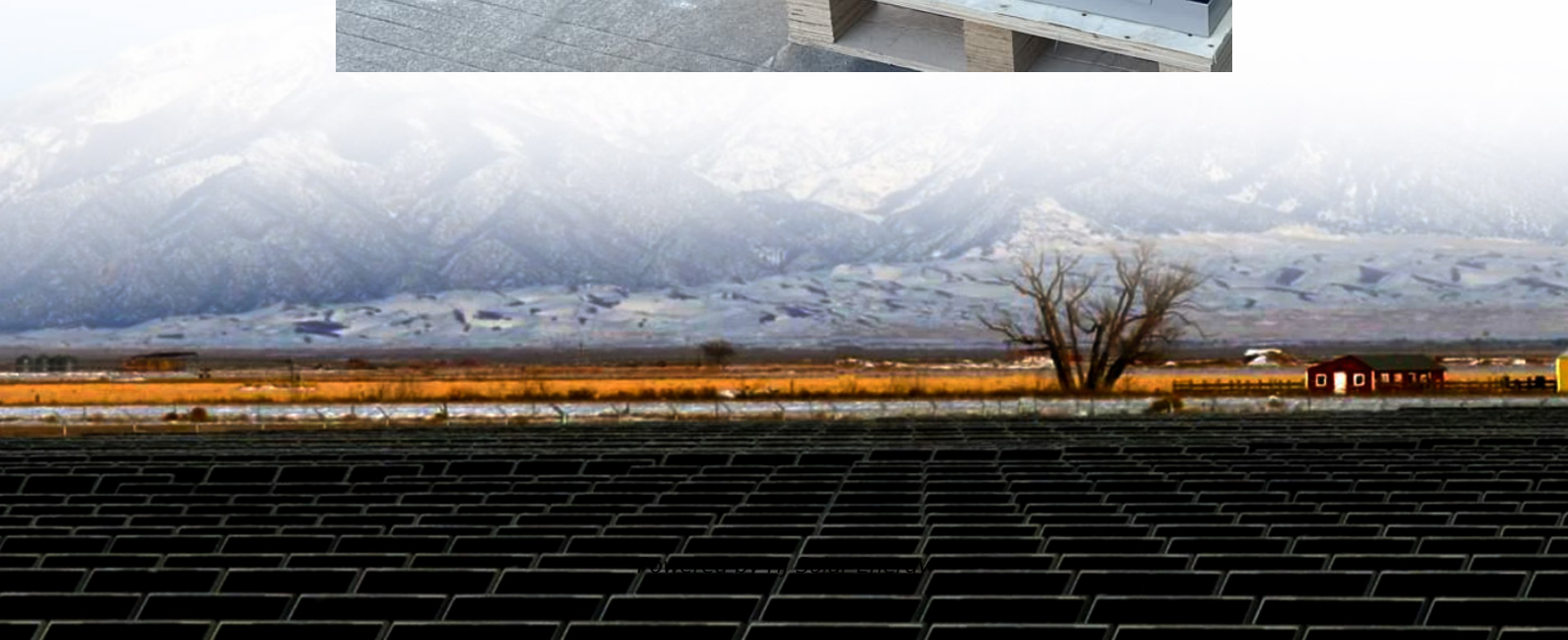


Generator flywheel energy storage





Overview

First-generation flywheel energy-storage systems use a large steel flywheel rotating on mechanical bearings. Newer systems use carbon-fiber composite rotors that have a higher tensile strength than steel and can store much more energy for the same mass.

Flywheel energy storage (FES) works by accelerating a rotor (flywheel) to a very high speed and maintaining the energy in the system as rotational energy. When energy is extracted from the system, the flywheel's rotational speed decreases.

A typical system consists of a flywheel supported by bearings connected to a motor/generator. The flywheel and sometimes the bearings are housed in a vacuum chamber to reduce friction.

TransportationAutomotiveIn the 1950s, flywheel-powered buses, known as *Beacon Power*.

- • • - Form of power supply
- - High-capacity electrochemical capacitor

GeneralCompared with other ways to store electricity, FES systems have long lifetimes (lasting decades).

Flywheels are not as adversely affected by temperature changes, can operate at a much wider temperature range, and are not subject to many of the common failures of chemical batteries. They are also less potentially damaging to the environment, being non-toxic and recyclable.

- Beacon Power Applies for DOE Grants to Fund up to 50% of Two 20 MW Energy Storage Plants, Sep. 1, 2009
- Sheahen.

Flywheel energy storage (FES) works by accelerating a rotor (flywheel) to a very high speed and maintaining the energy in the system as rotational energy.

Flywheel energy storage (FES) works by accelerating a rotor (flywheel) to a very high speed and maintaining the energy in the system as rotational energy.

Flywheel energy storage (FES) works by accelerating a rotor (flywheel) to a very high speed and maintaining the energy in the system as rotational energy.



energy. When energy is extracted from the system, the flywheel's rotational speed is reduced as a consequence of the principle of conservation of.

Using energy storage technology can improve the stability and quality of the power grid. One such technology is flywheel energy storage systems (FESSs). Compared with other energy storage systems, FESSs offer numerous advantages, including a long lifespan, exceptional efficiency, high power.

At its core, an FES system utilizes the kinetic energy of a rotating flywheel. This kinetic energy is converted and stored, ready to be harnessed when needed. The fundamental principle behind an FES system is rooted in basic physics – specifically, the concept of rotational energy. Energy input:.

Flywheel technology is a method of energy storage that uses the principles of rotational kinetic energy. A flywheel is a mechanical device that stores energy by spinning a rotor at very high speeds. The basic concept involves converting electrical energy into rotational energy, storing it, and then.

Flywheel generators are emerging as a prominent solution in backup power and energy storage. Contrary to conventional systems, flywheel technology saves energy in the form of kinetic energy, which is tapped by a rotating flywheel. The mechanism ensures a stable power output in case of fluctuation.

Flywheel Energy Storage Systems (FESS) rely on a mechanical working principle: An electric motor is used to spin a rotor of high inertia up to 20,000-50,000 rpm. Electrical energy is thus converted to kinetic energy for storage. For discharging, the motor acts as a generator, braking the rotor to.



Generator flywheel energy storage



Flywheel Energy Storage

2.4 Flywheel energy storage Flywheel energy storage, also known as kinetic energy storage, is a form of mechanical energy storage that is a suitable to achieve the smooth operation of ...

Flywheel Energy Storage

Flywheel energy storage uses electric motors to drive the flywheel to rotate at a high speed so that the electrical power is transformed into mechanical power and stored, and when ...



A review of flywheel energy storage systems: state of the art and

Thanks to the unique advantages such as long life cycles, high power density and quality, and minimal environmental impact, the flywheel/kinetic energy storage system (FESS) ...



Technology: Flywheel Energy Storage

The system consists of a 40-foot container with 28 flywheel storage units, electronics enclosure, 750 V DC-circuitry, cooling, and a vacuum system. Costs for grid inverter, energy



management ...



Could Flywheels Be the Future of Energy Storage?

The flywheel continues to store energy as long as it continues to spin; in this way, flywheel energy storage systems act as mechanical energy ...



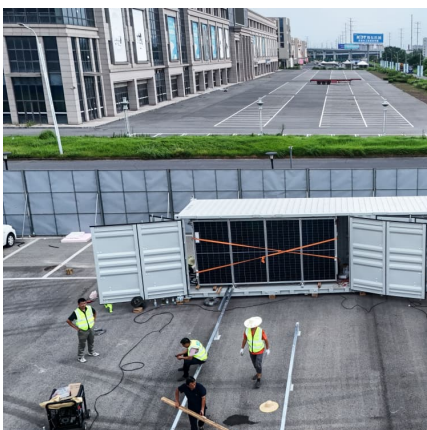
The Flywheel Energy Storage System: A Conceptual Study, ...

Abstract-While energy storage technologies cannot be considered sources of energy; they provide valuable contributions to enhance the stability, power quality and reliability of the ...



Coordinated Control of Flywheel and Battery Energy Storage ...

Due to the inherent slow response time of diesel generators within an islanded microgrid (MG), their frequency and voltage control systems often struggle to effectively ...





[Flywheel Energy Storage System: What Is It and How ...](#)

Components of a Flywheel Energy Storage System
Flywheel: The core of the system, typically made of composite materials, rotates at very high speeds. ...

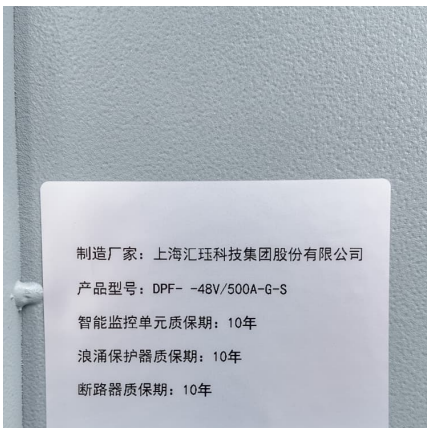


Design Calculation of Flywheel Free Energy Generating ...

The flywheel rotors are coupled with an integral motor-generator that is contained in the housing .The motor-generator is used to store and then harness energy from the rotating flywheel.

Doubly Fed Induction Generator in a Flywheel Energy Storage ...

The flywheel energy storage system consists of an electric drive with Doubly Fed Induction Generator and Modular Multilevel Matrix Converter. The authors discuss the negative ...



[Learn how flywheel energy storage works. Planète ...](#)

Flywheel energy storage1 consists in storing kinetic energy via the rotation of a heavy wheel or cylinder, which is usually set in motion by an ...



Overview of Control System Topology of Flywheel Energy Storage ...

Due to its low environmental impact and great efficiency, flywheel energy storage is a nearly mature technology that is being implemented in a variety of sectors and with ...



[Flywheel energy and power storage systems](#)

Overall the flywheel geometry and speed determines the energy storage capability, whilst the motor/generator and power electronics determines the power capabilities.

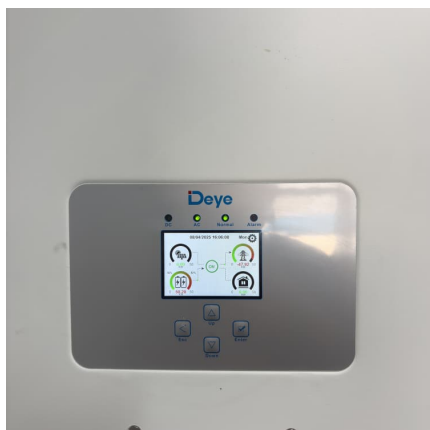
Flywheel Power Systems Information

Flywheel power systems, also known as flywheel energy storage (FES) systems, are power storage devices that store kinetic energy in a rotating flywheel. The flywheel rotors are coupled ...



[Generation of Free Energy using a Compact Flywheel](#)

A compact flywheel is involved in generation of free energy. The kinetic energy storage flywheel is designed to attach it to an electric machine. The mechanical bearings and belt drive support ...





[Fabrication of Free Energy Generation Using Flywheel](#)

One energy storage technology now arousing great interest is the flywheel energy storage systems (FESS), since this technology can offer many advantages as an energy storage ...



Flywheel Energy Storage Systems and their Applications: A ...

Flywheel energy storage systems are suitable and economical when frequent charge and discharge cycles are required. Furthermore, flywheel batteries have high power density and a ...

[Development and prospect of flywheel energy storage ...](#)

With the rise of new energy power generation, various energy storage methods have emerged, such as lithium battery energy storage, flywheel energy sto...



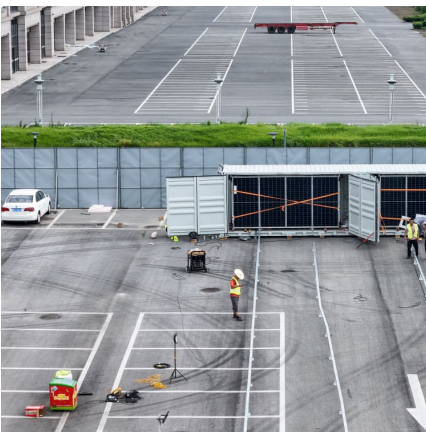
[Overview of Flywheel Systems for Renewable Energy ...](#)

Energy can be stored through various forms, such as ultra-capacitors, electrochemical batteries, kinetic flywheels, hydro-electric power or compressed air. Their comparison in terms of specific ...



Applications of flywheel energy storage system on load frequency

Flywheel energy storage systems (FESS) are considered environmentally friendly short-term energy storage solutions due to their capacity for rapid and efficient energy storage ...



Flywheel Energy Storage System

The entire flywheel energy storage system realizes the input, storage, and output processes of electrical energy. The flywheel battery system includes a motor, which operates in the form of ...

[Flywheel Energy Storage Systems . Electricity ...](#)

This flywheel, when paired to a motor/generator unit, behaves like a battery and energy can be stored for hours and dispatched on demand. The system ...





[World's Largest Flywheel Energy Storage System](#)

Since there is very little friction, the flywheel spins continually with very little added energy input needed. Energy can then be drawn from the ...

A review of flywheel energy storage systems: state of the art ...

The ex-isting energy storage systems use various technologies, including hydro-electricity, batteries, supercapacitors, thermal storage, energy storage flywheels,[2] and others.



[Flywheel Energy Storage: Alternative to Battery Storage](#)

As the energy grid evolves, storage solutions that can efficiently balance the generation and demand of renewable energy sources are critical. ...

Technology: Flywheel Energy Storage

Summary of the storage process Flywheel Energy Storage Systems (FESS) rely on a mechanical working principle: An electric motor is used to spin a rotor of high inertia up to 20,000-50,000 ...



[Flywheel Systems for Utility Scale Energy Storage](#)

Flywheel Systems for Utility Scale Energy Storage is the final report for the Flywheel Energy Storage System project (contract number EPC-15-016) conducted by Amber Kinetics, Inc.



How It Works: Flywheel Storage

Learn how flywheel storage works in this illustrated animation from OurFuture.Energy Discover more fantastic energy-related and curriculum-aligned resources for the classroom at ...



Contact Us

For catalog requests, pricing, or partnerships, please visit:
<https://www.conrad.edu.pl>