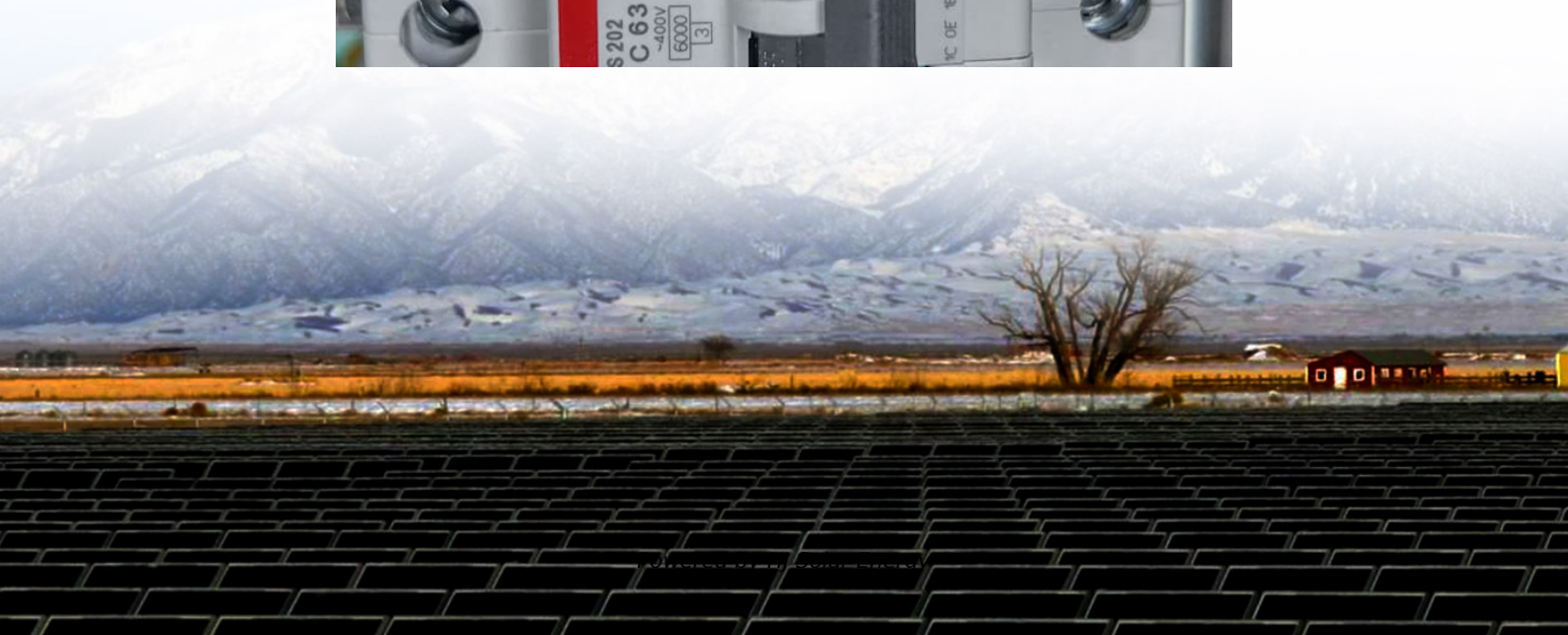
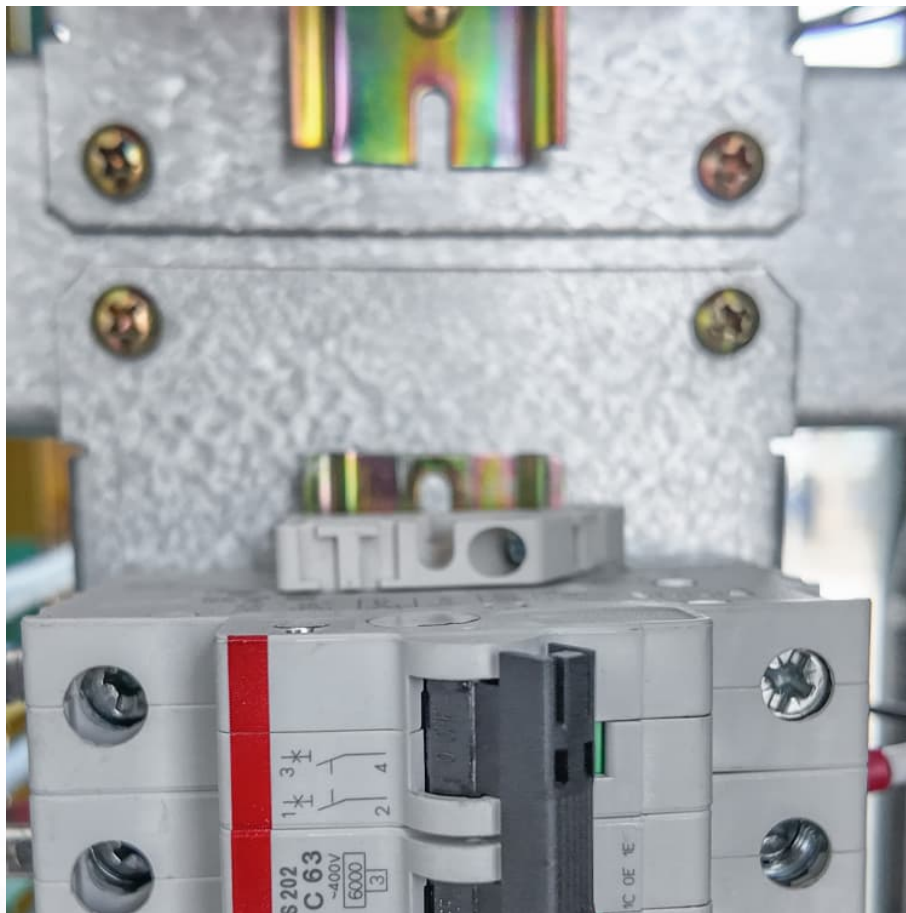


Go power solar controller battery type





Overview

The GP-PWM-30-UL is suitable for use with lead acid batteries (vented, GEL, or AGM type) as well as some lithium iron phosphate (LiFePO4) batteries that are supplied with a Battery Management System (BMS). Copyright © 2025, Go Power! How do I charge two batteries on a GP-pwm-30-ul solar controller?

2 Charging Two Batteries Use the following wiring diagram if you are using the GP-PWM-30-UL to charge two separate battery banks. Connect battery bank 1 to the battery 1 terminals and battery bank 2 to the battery 2 terminals on the back of the solar controller. **IMPORTANT:** Ensure your primary/permanent battery (house bank) is connected to.

What is a solar charge controller?

A solar charge controller is an essential component of your photovoltaic (PV) system. The controller maintains the life of the battery by protecting it from overcharging. When your battery has reached a 100% state of charge, the controller prevents overcharging by limiting the current flowing into the batteries from your solar array.

What is a GP-RVC-R solar controller?

The GP-RVC-R is a surface mounted remote display for GP-RVC-MPPT photovoltaic (PV) charge controllers. The GP-RVC-R shows the charge current to the battery and battery voltage. Go Power!'s largest solar controller. This 60 Amp MPPT Solar Controller uses Maximum Power Point Tracking (MPPT) charging with up to 98% efficiency.

How to change battery type in solar controller?

pe and Charging Profile Solar Controller reless
Setting Battery 1 To set the battery type for battery bank 1, hold th B Button for 3 seconds. When the display shows a blinking number 1, release the B Button. Next, select the charging profile of battery bank 1 by pressing the B Button to toggle through the profile options: Sealed/G.



What is a solar controller?

verview1.1 IntroductionA Solar Controller (or Charge Controller / Regulator) is an essential component of your photovoltaic solar system. The Controller maintains the life of the battery by protect.

What is GP-SB-pwm-30bt solar controller?

The Go Power! Bluetooth-enabled, GP-SB-PWM-30BT Solar Controller is a 12-volt flush-mounted, single-bank, photo-voltaic (PV) charge controller rated for a continuous solar current input of 30 amps. This controller is easy to install with screw cover plate and features improved Bluetooth performance for remote system monitoring.



Go power solar controller battery type



Go Power! Solar Controller Review

The controller boasts a full 4-stage battery bulk absorption and float, ensuring that your batteries stay charged and ready to go. And with the ability to handle up to 570 watts of solar power, ...

[Go Power 30A Bluetooth Solar Controller](#)

The Go Power! Bluetooth-enabled, GP-SB-PWM-30BT Solar Controller is a 12-volt flush-mounted, single-bank, photo-voltaic (PV) charge controller rated for a continuous solar current ...



[Solar Charge Controllers , PWM & MPPT , Go Power](#)

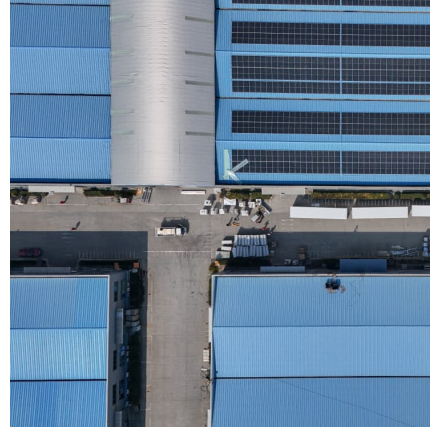
Monitor your controller remotely with the Go Power! Connect / Dometic Power app. View essential battery information and customize charge parameters using a connected handled device.

Does Battery Type Need to be Selected When Installing Go ...

Hey Joe, the MPPT converter you mentioned actually isn't made anymore but we do have the Go Power part # GP32QR which is also a 30 amp



MPPT converter that is ...

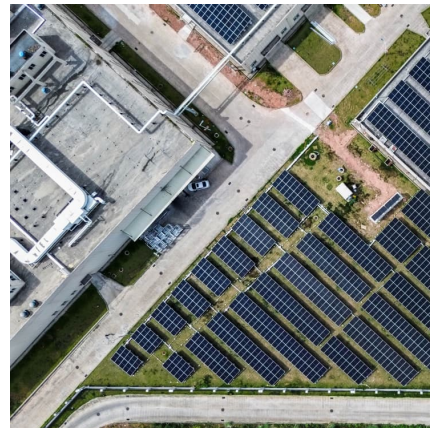


User Manual GP-PWM-30-UL

1.3 Battery Type The GP-PWM-30-UL is suitable for use with lead acid batteries (vented, GEL, or AGM type) as well as some lithium iron phosphate (LiFePO4) batteries that are supplied with a ...

[30 Amp Dual Bank Solar Controller , Go Power Products](#)

The controller maintains the life of the battery by protecting it from overcharging. When your battery has reached a 100% state of charge, the controller prevents overcharging by limiting ...



Does Battery Type Need to be Selected When Installing Go Power ...

Hey Joe, the MPPT converter you mentioned actually isn't made anymore but we do have the Go Power part # GP32QR which is also a 30 amp MPPT converter that is ...



[30 Amp Dual Bank Solar Controller , Go Power Products](#)

The controller maintains the life of the battery by protecting it from overcharging. When your battery has reached a 100% state of charge, the controller prevents overcharging by limiting the current flowing into the batteries from your solar ...



Go Power Solar Controller Battery Type: Your Ultimate Guide to ...

The Go Power solar controller battery type you choose can make or break your system's efficiency. Whether you're powering an off-grid cabin or tricked-out RV, picking the ...

Go Power! Solar Controller Review

The controller boasts a full 4-stage battery bulk absorption and float, ensuring that your batteries stay charged and ready to go. And with the ability to handle up to 570 watts of solar power, you'll never have to worry about running out of juice.



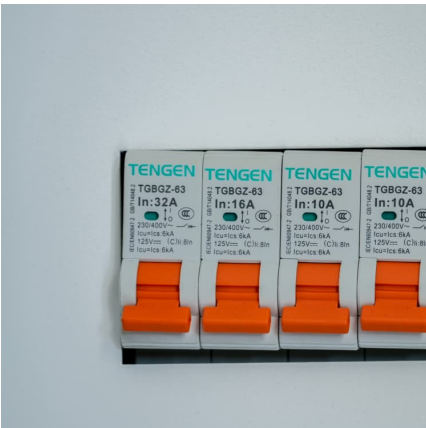
How To Change The Battery Type Of The Go Power MPPT Solar ...

Once you have it installed you can use the following steps from the manual listed below to access the battery type settings and change it to your desired setting.



[Go-Power Solar Controller User Manual](#)

STEP 3: Connect the remote display to each solar controller and set the battery type. This is accomplished by pressing and holding the "ENTER" button until the following ...

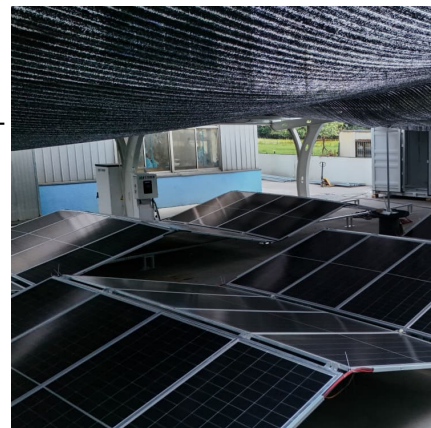


GP-PWM-30-UL / PWM Solar Controller / Overview : Supported Battery ...

The GP-PWM-30-UL is suitable for use with lead acid batteries (vented, GEL, or AGM type) as well as some lithium iron phosphate (LiFePO4) batteries that are supplied with a Battery ...

[Go Power 30A Bluetooth Solar Controller](#)

??8%??· The Go Power! Bluetooth-enabled, GP-SB-PWM-30BT Solar Controller is a 12-volt flush-mounted, single-bank, photo-voltaic (PV) charge controller rated for a continuous ...





Contact Us

For catalog requests, pricing, or partnerships, please visit:
<https://www.conrad.edu.pl>