

Greenworks 60v battery charger solid red light





Overview

What does the red light on the GreenWorks Charger mean?

The red light on the GreenWorks charger indicates that the battery is either warm or not charging properly. If the red light stays on, allow the battery to cool inside the charger for up to 30 minutes. Charging should start automatically once the battery cools.

What does a red light on a GreenWorks battery mean?

Immediately take your Greenworks battery out of its charger if you notice an unchanging red light on it. I'm not overreacting when I say it could lead to serious harm otherwise. A solid red light means the battery currently charging is at unsafe temperatures. Here's what this warning indicator will look like if it ever shows up for you.

What does a green light on a GreenWorks battery charger mean?

A blinking green light on a Greenworks battery charger typically indicates diagnostic mode, checking for issues like deep discharge, temperature extremes, or internal problems. Ensure the battery is at room temperature before troubleshooting potential faults with the charger or battery.

Why is my GreenWorks battery charger flashing red light?

Some possible reasons for your GreenWorks battery charger flashing red light include: Fixing these issues can solve the headache of flashing red lights. Check temperature, connections, and battery condition. Fix issues to ensure proper charging. Avoid partial charging to prevent memory effects.

How do I charge a GreenWorks battery?

To start, use a multimeter to measure the output voltage of the charger and ensure it falls within the specified range for the Greenworks battery. Additionally, try using the charger with a different compatible battery to determine if it charges properly, which can help rule out any problems with



the charger itself.

Do GreenWorks Chargers work with 80v batteries?

It's important to interpret these signals accurately to maintain the battery's health. Greenworks chargers are designed to be compatible with specific Greenworks batteries. For instance, an 80V charger is meant for 80V batteries.



Greenworks 60v battery charger solid red light



[New battery stuck on red light : r/Greenworks](#)

I just had this happen and after reading that it means there could be a connector issue I inspected more closely. Turns out there was some dust in the charging connector of the ...

Solid Red Light on Greenworks Battery Charger -Troubleshooting ...

If you have a Greenworks battery charger and you see a solid red light, it could be a sign that something is wrong. Here are some steps you can take to fix the issue:



Greenworks Charger Blinking Red: Troubleshooting and Solutions

In this section, I cover some of the most common queries about the Greenworks battery charger when it signals with a red light. Whether it's a flashing or solid red light on your ...

[How To Fix Greenworks Battery Not Charging](#)

The red light on your Greenworks battery charger indicates a charging error. Possible causes include faulty battery connections, damaged cells, or charger issues.



GREENWORKS 2901302 OWNER'S MANUAL Pdf Download , ManualsLib

The red light on the GreenWorks charger indicates that the battery is either warm or not charging properly. If the red light stays on, allow the battery to cool inside the charger for up to 30 minutes.



How To Fix Greenworks Battery Not Charging

The red light on your Greenworks battery charger indicates a charging error. Possible causes include faulty battery connections, damaged cells, or charger issues.



Why Does GreenWorks MO60L00 Charger Blink Red?

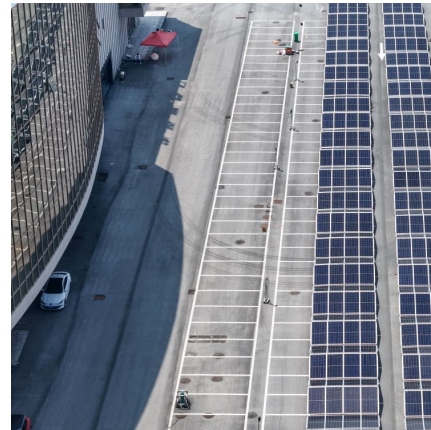
??\$9?? A red blinking light on the MO60L00 charger usually indicates poor battery contact or a deeply discharged battery. First, remove and reinsert the battery firmly to ensure ...





[New battery stuck on red light : r/Greenworks](#)

I just had this happen and after reading that it means there could be a connector issue I inspected more closely. Turns out there was some dust in the charging connector of the battery. I blew it ...



Greenworks P0802780-00 60V Charger Owner's Manual , Manualzz

Greenworks P0802780-00 is a 60V charger designed for Greenworks tools. It features a diagnostic LED that displays the battery's charging status and can handle various battery ...

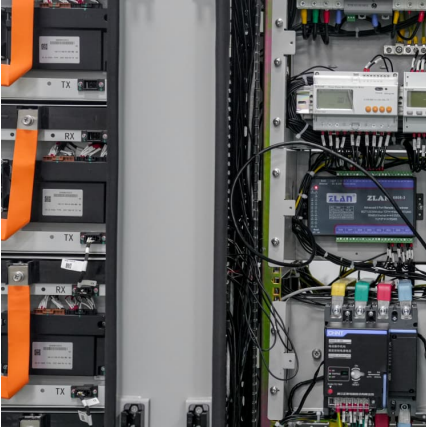
[Why Does GreenWorks MO60L00 Charger Blink Red?](#)

A red blinking light on the MO60L00 charger usually indicates poor battery contact or a deeply discharged battery. First, remove and reinsert the battery firmly to ensure proper connection.



[Greenworks Charger Blinking Red: Troubleshooting ...](#)

In this section, I cover some of the most common queries about the Greenworks battery charger when it signals with a red light. Whether it's a flashing or solid red light on your charger, these answers will help guide you ...



[Greenworks Battery Charger Lights Meaning: ...](#)

The meaning of each light are as follow: Blinking Green: Charging Solid Green: Fully Charged Blinking Red: Bad Battery (Perform Reset To Solve) Solid Red: Hot Cold Delay - Battery is



[Solid Red Light on Greenworks Battery Charger](#)

If you have a Greenworks battery charger and you see a solid red light, it could be a sign that something is wrong. Here are some steps you can take to fix the issue:

[Greenworks Battery Charger Lights Meaning](#)

A solid red light means the battery currently charging is at unsafe temperatures. Here's what this warning indicator will look like if it ever shows up for you.

[GREENWORKS 2901302 OWNER'S MANUAL Pdf ...](#)



The red light on the GreenWorks charger indicates that the battery is either warm or not charging properly. If the red light stays on, allow the battery to cool inside the charger for up to 30 minutes.

Greenworks Battery Charger Lights Meaning: Flashing Red, Solid Red

The meaning of each light are as follow: Blinking Green: Charging Solid Green: Fully Charged Blinking Red: Bad Battery (Perform Reset To Solve) Solid Red: Hot Cold Delay - Battery is



GreenWorks Battery Charger Flashing Red Light: Best Guide

Are you worried about your greenworks battery charger flashing red light? We've got the solution with this easy troubleshooting guide.

Contact Us

For catalog requests, pricing, or partnerships, please visit:
<https://www.conrad.edu.pl>