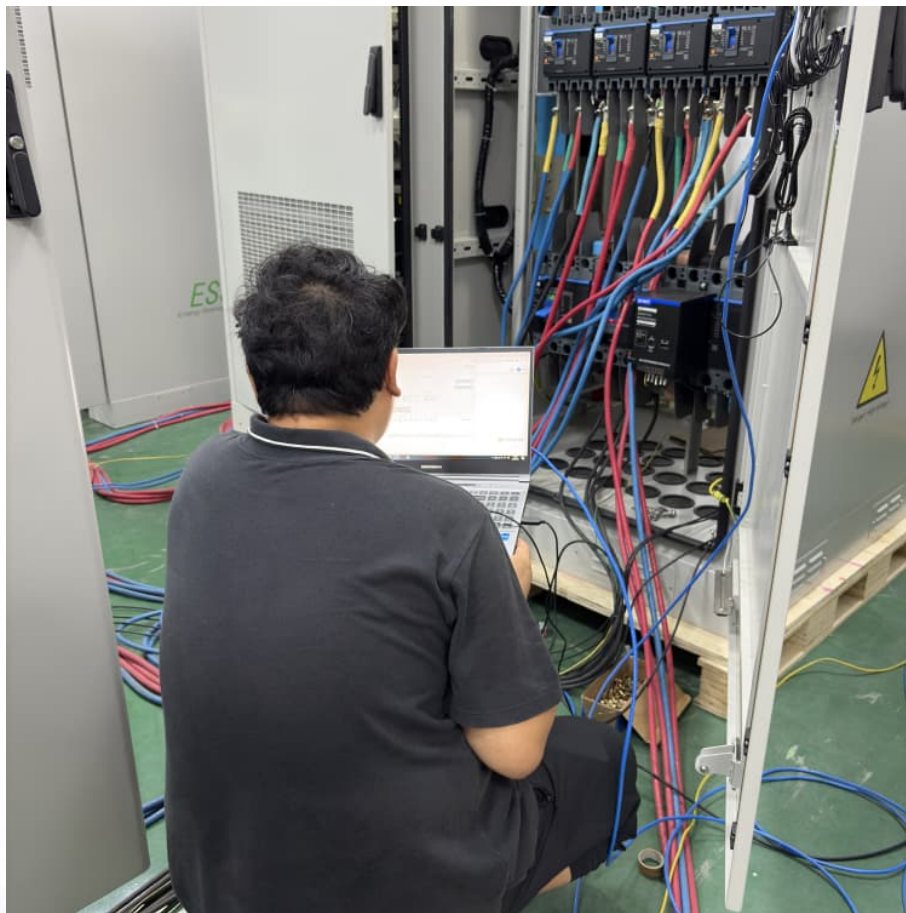


# **Greenworks 60v battery solid red light**





## Overview

---

Why does my GreenWorks battery charger have a red light?

If you see a solid red light on your Greenworks battery charger, don't panic. I for sure can understand how frustrating it can be. I mean, those things are cheap! But don't worry, it can still be a small issue and there are a few things you can do to troubleshoot it. First, make sure that your battery is properly seated in the charger.

What does a green light on a GreenWorks Charger mean?

After all, it's not a color people usually see on the Greenworks charger. Green lights signal regular performance. When the Greenworks charger blinks green, that means it's still charging your battery. A solid green light means the battery is at 100%. Red lights, on the other hand, are a bad sign when it comes to these chargers.

Can GreenWorks batteries be repaired?

Yes, Greenworks batteries can often be fixed by troubleshooting common issues, identifying defective components, and following detailed repair guides with the right tools and knowledge. Seeking advice from experts or online forums can also be beneficial. [Why Is My Greenworks Battery Not Charging Red Light?](#)

.

Are GreenWorks batteries compatible?

Greenworks chargers are designed to be compatible with specific Greenworks batteries. For instance, an 80V charger is meant for 80V batteries. Whenever I charge my battery, I make sure to match it with the correct charger to prevent damage and ensure efficient charging.

How do I Reset my GreenWorks battery?



If the charger seems to be working correctly, consider testing the Greenworks battery on a different charger to determine if the problem lies with the battery or the charging equipment. Initiate the reset process for the Greenworks battery and charger by unplugging both devices from their power sources and allowing them to sit idle for 10 minutes.

When should I remove my GreenWorks battery?

Although, it's best to remove the battery soon after the light shows up. Letting it stay on there for hours after it's at 100% could lead to overcharging or overheating. Immediately take your Greenworks battery out of its charger if you notice an unchanging red light on it. I'm not overreacting when I say it could lead to serious harm otherwise.



## Greenworks 60v battery solid red light

---



[Greenworks 60V battery not charging : r/Greenworks](#)

There's a weird trick that I saw in a YT video when I was diagnosing my issue where you can connect wire jumpers between the positives and negatives of 2 similar (60v) ...

[Greenworks 60V battery not charging : r/Greenworks](#)

There's a weird trick that I saw in a YT video when I was diagnosing my issue where you can connect wire jumpers between the positives and negatives of 2 similar (60v) batteries for a few ...



[New battery stuck on red light : r/Greenworks](#)

I just had this happen and after reading that it means there could be a connector issue I inspected more closely. Turns out there was some dust in the charging connector of the battery. I blew it ...

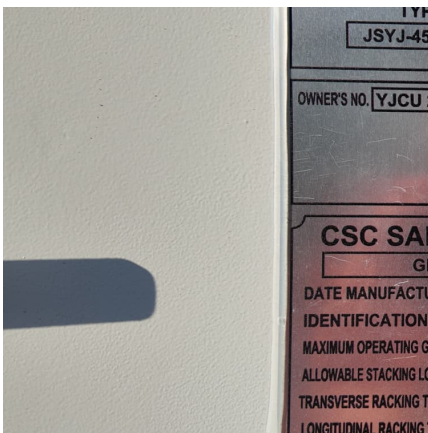
### Greenworks Battery Not Charging

To get rid of the blinking red light and fix a Greenworks battery that's not charging, try the method below. But before you continue reading this article, you can first watch ...



### I Tested the Greenworks Battery Flashing Red: Here's What I ...

I tested the Greenworks Battery with flashing red light and was amazed by its durability and efficiency. Say goodbye to frequent replacements and hello to long-lasting power!



### GreenWorks Battery Charger Flashing Red Light: Best Guide

Are you worried about your greenworks battery charger flashing red light? We've got the solution with this easy troubleshooting guide.



### [How To Fix Greenworks Battery Not Charging](#)

The red light on your Greenworks battery charger indicates a charging error. Possible causes include faulty battery connections, damaged cells, or charger issues.





### [Greenworks Battery Charger Lights Meaning](#)

A solid red light means the battery currently charging is at unsafe temperatures. Here's what this warning indicator will look like if it ever shows up for you.



### [Greenworks Charger Blinking Red: Troubleshooting ...](#)

In this section, I cover some of the most common queries about the Greenworks battery charger when it signals with a red light. Whether it's a flashing or solid red light on your charger, these answers will help guide you ...

### [New battery stuck on red light : r/Greenworks](#)

I just had this happen and after reading that it means there could be a connector issue I inspected more closely. Turns out there was some dust in the charging connector of the ...



### [I Tested the Greenworks Battery Flashing Red: Here's ...](#)

I tested the Greenworks Battery with flashing red light and was amazed by its durability and efficiency. Say goodbye to frequent replacements and hello to long-lasting power!



### Solid Red Light on Greenworks Battery Charger -Troubleshooting ...

If you have a Greenworks battery charger and you see a solid red light, it could be a sign that something is wrong. Here are some steps you can take to fix the issue:



### [How To Fix Greenworks Battery Not Charging](#)

The red light on your Greenworks battery charger indicates a charging error. Possible causes include faulty battery connections, damaged cells, or charger issues.

### Greenworks Charger Blinking Red: Troubleshooting and Solutions

In this section, I cover some of the most common queries about the Greenworks battery charger when it signals with a red light. Whether it's a flashing or solid red light on your ...



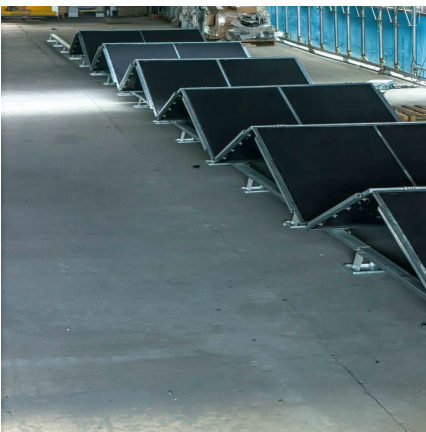


### [Why Does GreenWorks MO60L00 Charger Blink Red?](#)

A red blinking light on the MO60L00 charger usually indicates poor battery contact or a deeply discharged battery. First, remove and reinsert the battery firmly to ensure proper connection.

### **Greenworks Battery Not Charging**

To get rid of the blinking red light and fix a Greenworks battery that's not charging, try the method below. But before you continue reading this article, you can first watch the short video I've made about this topic.



### [Solid Red Light on Greenworks Battery Charger](#)

If you have a Greenworks battery charger and you see a solid red light, it could be a sign that something is wrong. Here are some steps you can take to fix the issue:

### [Why Does GreenWorks MO60L00 Charger Blink Red?](#)

??\$???. A red blinking light on the MO60L00 charger usually indicates poor battery contact or a deeply discharged battery. First, remove and reinsert the battery firmly to ensure ...



## Contact Us

---

For catalog requests, pricing, or partnerships, please visit:  
<https://www.conrad.edu.pl>