

Greenworks battery charger solid red light





Overview

The red light on the GreenWorks charger indicates that the battery is either warm or not charging properly. If the red light stays on, allow the battery to cool inside the charger for up to 30 minutes. Charging should start automatically once the battery cools.

The red light on the GreenWorks charger indicates that the battery is either warm or not charging properly. If the red light stays on, allow the battery to cool inside the charger for up to 30 minutes. Charging should start automatically once the battery cools.

If you see a solid red light on your Greenworks battery charger, don't panic. I for sure can understand how frustrating it can be. I mean, those things are cheap! But don't worry, it can still be a small issue and there are a few things you can do to troubleshoot it. First, make sure that your.

Charger showing only the red overheating light on the charger, while the battery has never been used and at room temperature. Honestly getting sick of it this is the second issue I've had, the first with the cable running to the handle being basically cut in half. This is why people say fuck the.

That pattern is the solid green light, which signals a fully charged Greenworks battery. It will come up at the end of every full charging cycle. There aren't any special details to note about the light from the picture above. It's just letting users know their battery finished charging, and.

Some possible reasons for your GreenWorks battery charger flashing red light include: Fixing these issues can solve the headache of flashing red lights. Check temperature, connections, and battery condition. Fix issues to ensure proper charging. Avoid partial charging to prevent memory effects.

When using Greenworks tools, a common concern is the indication of a charging issue, specifically when the charger blinks red. Understanding why this happens is crucial to ensure your battery-powered equipment remains in top condition and ready for use. The blinking red light on the charger usually.



When my 24V Greenworks battery is flashing red on the charger, it means the battery is unhealthy and it is not able to charge normally. more When my 24V Greenworks battery is flashing red on the charger, it means the battery is unhealthy and it is not able to charge normally. To fix this issue. What does the red light on the GreenWorks Charger mean?

The red light on the GreenWorks charger indicates that the battery is either warm or not charging properly. If the red light stays on, allow the battery to cool inside the charger for up to 30 minutes. Charging should start automatically once the battery cools.

What does a red light on a GreenWorks battery mean?

Immediately take your Greenworks battery out of its charger if you notice an unchanging red light on it. I'm not overreacting when I say it could lead to serious harm otherwise. A solid red light means the battery currently charging is at unsafe temperatures. Here's what this warning indicator will look like if it ever shows up for you.

Why is my GreenWorks battery charger flashing red light?

Some possible reasons for your GreenWorks battery charger flashing red light include: Fixing these issues can solve the headache of flashing red lights. Check temperature, connections, and battery condition. Fix issues to ensure proper charging. Avoid partial charging to prevent memory effects.

What do GreenWorks battery charger lights mean?

Greenworks chargers have an indicator that starts glowing whenever users put a battery inside. That indicator signals important things, like when charging is complete. The symbols on the charger aren't enough for some to understand what each light means. That's why I made this guide on the meaning of Greenworks battery charger lights to help!.

What does a green light on a GreenWorks 2901302 mean?

If one green light is on while two remain off on the GreenWorks 2901302 battery, it means the battery capacity is between 40% and 60%. This answer is automatically generated what does the red light on the charger indicate?

why does the weed eater run for a minute or two and then shut off?

.



Are GreenWorks batteries compatible?

Greenworks chargers are designed to be compatible with specific Greenworks batteries. For instance, an 80V charger is meant for 80V batteries. Whenever I charge my battery, I make sure to match it with the correct charger to prevent damage and ensure efficient charging.



Greenworks battery charger solid red light



Solid Red Light on Greenworks Battery Charger -Troubleshooting ...

If you have a Greenworks battery charger and you see a solid red light, it could be a sign that something is wrong. Here are some steps you can take to fix the issue:

[Greenworks Battery Charger Flashing Red Light: How ...](#)

You should go over the charger showing solid red light and see if something there applies to your case. If nothing else, at this point you would probably want to contact Greenworks customer support.



[New battery stuck on red light : r/Greenworks](#)

I just had this happen and after reading that it means there could be a connector issue I inspected more closely. Turns out there was some dust in the charging connector of the ...

[Greenworks Battery Charger Lights Meaning](#)

A solid red light means the battery currently charging is at unsafe temperatures. Here's what this warning indicator will look like if it ever shows up for you.



Greenworks Battery Charger Flashing Red Light: Expert Q& A ...

A red flashing light on the Greenworks 80V charger often signals battery or charger faults. First, inspect battery terminals for dirt or corrosion and clean them gently.



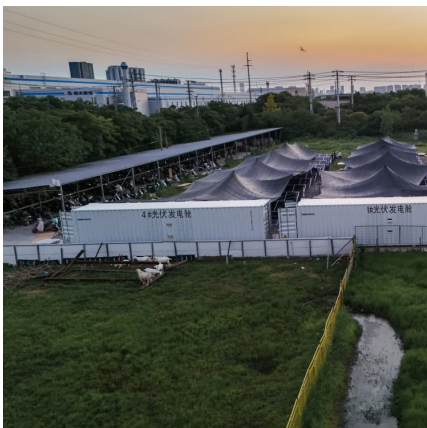
GreenWorks Battery Charger Flashing Red Light: Best Guide

Are you worried about your greenworks battery charger flashing red light? We've got the solution with this easy troubleshooting guide.



[Greenworks Charger Blinking Red: Troubleshooting ...](#)

In this section, I cover some of the most common queries about the Greenworks battery charger when it signals with a red light. Whether it's a flashing or solid red light on your charger, these answers will help guide you ...





[New battery stuck on red light : r/Greenworks](#)

I just had this happen and after reading that it means there could be a connector issue I inspected more closely. Turns out there was some dust in the charging connector of the battery. I blew it ...



Greenworks Battery Charger Flashing Red Light: How To Fix It!

You should go over the charger showing solid red light and see if something there applies to your case. If nothing else, at this point you would probably want to contact ...

[Solid Red Light on Greenworks Battery Charger](#)

If you have a Greenworks battery charger and you see a solid red light, it could be a sign that something is wrong. Here are some steps you can take to fix the issue:



GREENWORKS 2901302 OWNER'S MANUAL Pdf Download , ManualsLib

The red light on the GreenWorks charger indicates that the battery is either warm or not charging properly. If the red light stays on, allow the battery to cool inside the charger for up to 30 minutes.



Greenworks Charger Blinking Red: Troubleshooting and Solutions

In this section, I cover some of the most common queries about the Greenworks battery charger when it signals with a red light. Whether it's a flashing or solid red light on your ...



Greenworks Battery Charger Flashing Red Light: Expert Q& A ...

??\$9?? A red flashing light on the Greenworks 80V charger often signals battery or charger faults. First, inspect battery terminals for dirt or corrosion and clean them gently.

[GREENWORKS 2901302 OWNER'S MANUAL Pdf ...](#)

The red light on the GreenWorks charger indicates that the battery is either warm or not charging properly. If the red light stays on, allow the battery to cool inside the charger for up to 30 minutes.





Contact Us

For catalog requests, pricing, or partnerships, please visit:
<https://www.conrad.edu.pl>