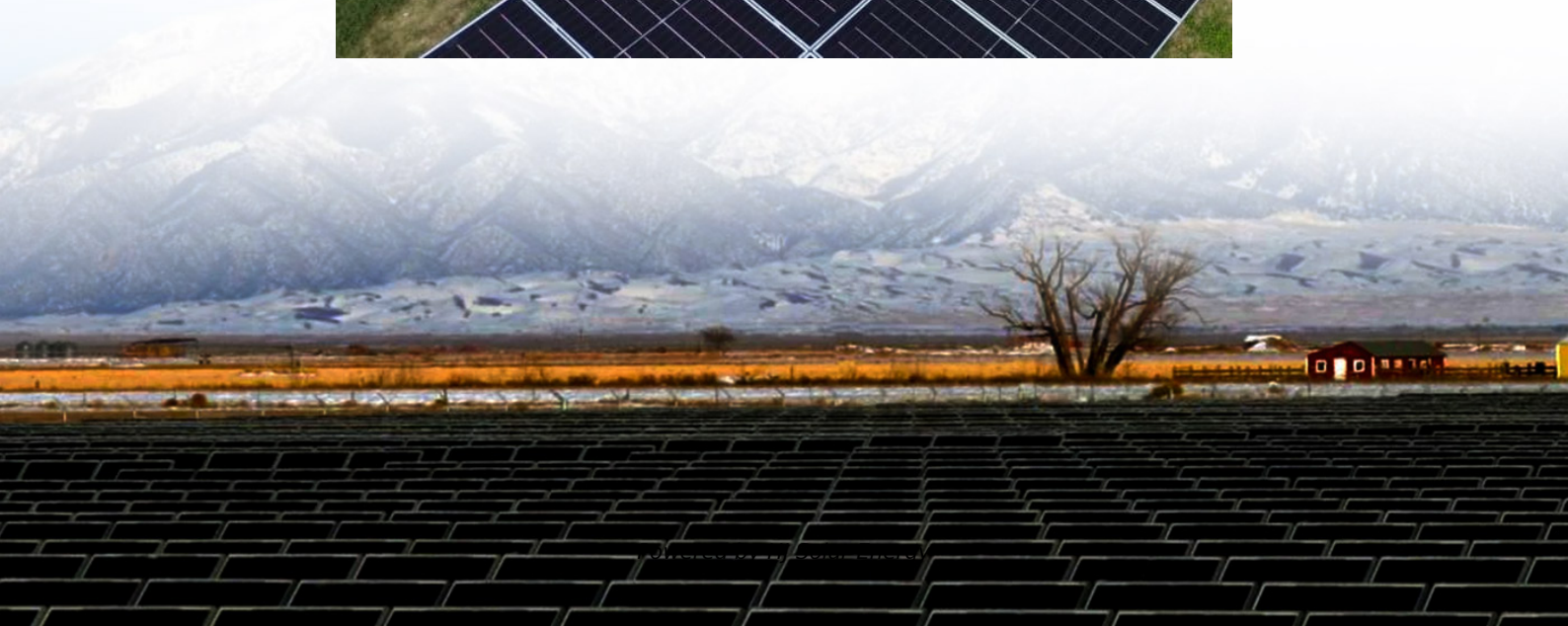


# **Greenworks battery solid red light**





## Overview

---

Immediately take your Greenworks battery out of its charger if you notice an unchanging red light on it. I'm not overreacting when I say it could lead to serious harm otherwise. A solid red light means the battery currently charging is at unsafe temperatures.

Immediately take your Greenworks battery out of its charger if you notice an unchanging red light on it. I'm not overreacting when I say it could lead to serious harm otherwise. A solid red light means the battery currently charging is at unsafe temperatures.

If you see a solid red light on your Greenworks battery charger, don't panic. I for sure can understand how frustrating it can be. I mean, those things are cheap! But don't worry, it can still be a small issue and there are a few things you can do to troubleshoot it. First, make sure that your.

That pattern is the solid green light, which signals a fully charged Greenworks battery. It will come up at the end of every full charging cycle. There aren't any special details to note about the light from the picture above. It's just letting users know their battery finished charging, and.

Charger showing only the red overheating light on the charger, while the battery has never been used and at room temperature. Honestly getting sick of it this is the second issue I've had, the first with the cable running to the handle being basically cut in half. This is why people say fuck the.

When my 24V Greenworks battery is flashing red on the charger, it means the battery is unhealthy and it is not able to charge normally. more When my 24V Greenworks battery is flashing red on the charger, it means the battery is unhealthy and it is not able to charge normally. To fix this issue.

Some possible reasons for your GreenWorks battery charger flashing red light include: Fixing these issues can solve the headache of flashing red lights. Check temperature, connections, and battery condition. Fix issues to ensure proper charging. Avoid partial charging to prevent memory effects.



When using Greenworks tools, a common concern is the indication of a charging issue, specifically when the charger blinks red. Understanding why this happens is crucial to ensure your battery-powered equipment remains in top condition and ready for use. The blinking red light on the charger usually. Why does my GreenWorks battery charger have a red light?

If you see a solid red light on your Greenworks battery charger, don't panic. I for sure can understand how frustrating it can be. I mean, those things are cheap! But don't worry, it can still be a small issue and there are a few things you can do to troubleshoot it. First, make sure that your battery is properly seated in the charger.

How do I Reset my GreenWorks battery?

If the charger seems to be working correctly, consider testing the Greenworks battery on a different charger to determine if the problem lies with the battery or the charging equipment. Initiate the reset process for the Greenworks battery and charger by unplugging both devices from their power sources and allowing them to sit idle for 10 minutes.

What does a green light on a GreenWorks battery charger mean?

A blinking green light on a Greenworks battery charger typically indicates diagnostic mode, checking for issues like deep discharge, temperature extremes, or internal problems. Ensure the battery is at room temperature before troubleshooting potential faults with the charger or battery.

Can GreenWorks batteries be repaired?

Yes, Greenworks batteries can often be fixed by troubleshooting common issues, identifying defective components, and following detailed repair guides with the right tools and knowledge. Seeking advice from experts or online forums can also be beneficial. Why Is My Greenworks Battery Not Charging Red Light?

.

Are GreenWorks batteries compatible?

Greenworks chargers are designed to be compatible with specific Greenworks batteries. For instance, an 80V charger is meant for 80V batteries. Whenever I charge my battery, I make sure to match it with the correct charger to prevent damage and ensure efficient charging.



Why is my GreenWorks battery flashing green?

Constantly putting a battery on charge and removing it could damage it. Speaking of the flashing green light going away, that only happens when the battery is at 100%. Once that time comes, the indicator will change to another pattern. That pattern is the solid green light, which signals a fully charged Greenworks battery.



## Greenworks battery solid red light

---



### [How I Troubleshooted My Greenworks 40V Battery ...](#)

A blinking green means it's charging the battery and this will become a solid green when it becomes fully charged. A solid red indicates a hot/cold delay and lastly, a blinking red means it detected a bad battery.

### [I Tested the Greenworks Battery Flashing Red: Here's ...](#)

In conclusion, dealing with a flashing red light on your Greenworks battery can be frustrating but there are steps you can take to resolve the issue. Remember to check for warranty coverage and consider purchasing an original replacement ...



### [GreenWorks 40V Charger Red Light Flashing Battery Won't ...](#)

??\$9??. If the battery is properly connected to charger and you have solid red light, that indicates a defective battery. You can check to see if your battery is still under warranty.

### [I Tested the Greenworks Battery Flashing Red: Here's What I ...](#)

In conclusion, dealing with a flashing red light on your Greenworks battery can be frustrating but there are steps you can take to resolve the issue.



Remember to check for warranty coverage ...

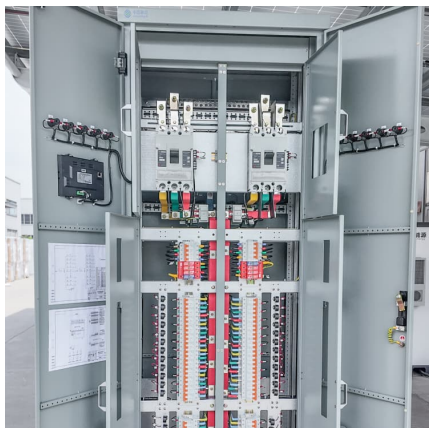


### **Solid Red Light on Greenworks Battery Charger -Troubleshooting ...**

If you have a Greenworks battery charger and you see a solid red light, it could be a sign that something is wrong. Here are some steps you can take to fix the issue:

### **Greenworks Charger Blinking Red: Troubleshooting and Solutions**

In this section, I cover some of the most common queries about the Greenworks battery charger when it signals with a red light. Whether it's a flashing or solid red light on your ...



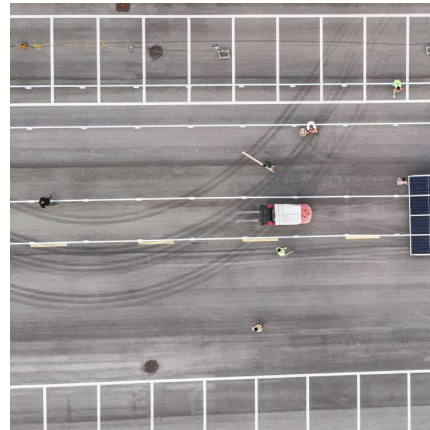
### **GreenWorks 40V Charger Red Light Flashing Battery Won't Charge**

If the battery is properly connected to charger and you have solid red light, that indicates a defective battery. You can check to see if your battery is still under warranty.



### [How To Fix Greenworks Battery Not Charging](#)

The red light on your Greenworks battery charger indicates a charging error. Possible causes include faulty battery connections, damaged cells, or charger issues.



### [New battery stuck on red light : r/Greenworks](#)

I just had this happen and after reading that it means there could be a connector issue I inspected more closely. Turns out there was some dust in the charging connector of the battery. I blew it ...

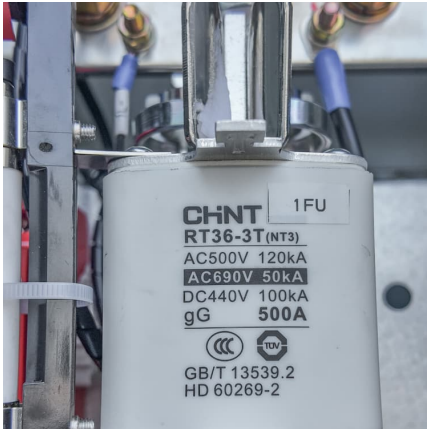
### [Solid Red Light on Greenworks Battery Charger](#)

If you have a Greenworks battery charger and you see a solid red light, it could be a sign that something is wrong. Here are some steps you can take to fix the issue:



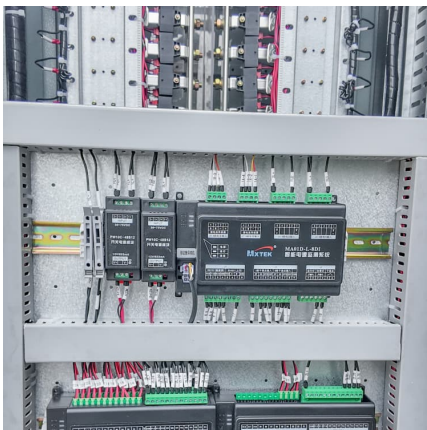
### [Greenworks Battery Charger Lights Meaning](#)

A solid red light means the battery currently charging is at unsafe temperatures. Here's what this warning indicator will look like if it ever shows up for you.



### GreenWorks Battery Charger Flashing Red Light: Best Guide

Are you worried about your greenworks battery charger flashing red light? We've got the solution with this easy troubleshooting guide.



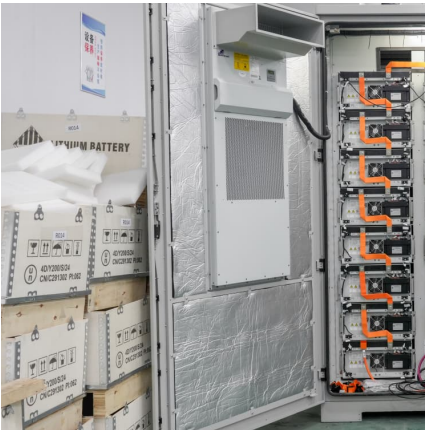
### [Greenworks Charger Blinking Red: Troubleshooting ...](#)

In this section, I cover some of the most common queries about the Greenworks battery charger when it signals with a red light. Whether it's a flashing or solid red light on your charger, these answers will help guide you ...

### [How To Fix Greenworks Battery Not Charging](#)

The red light on your Greenworks battery charger indicates a charging error. Possible causes include faulty battery connections, damaged cells, or charger issues.





[New battery stuck on red light : r/Greenworks](#)

I just had this happen and after reading that it means there could be a connector issue I inspected more closely. Turns out there was some dust in the charging connector of the ...

### How I Troubleshooted My Greenworks 40V Battery Not Charging - Blinking Red

A blinking green means it's charging the battery and this will become a solid green when it becomes fully charged. A solid red indicates a hot/cold delay and lastly, a ...



## Contact Us

---

For catalog requests, pricing, or partnerships, please visit:  
<https://www.conrad.edu.pl>