

High-pressure steam storage tank





Overview

The tank is about half-filled with cold water and steam is blown in from a via a perforated pipe near the bottom of the drum. Some of the steam and heats the water. The remainder fills the space above the water level. When the accumulator is fully charged the condensed steam will have raised the water level in the drum to about three-quarters full and the and pressure will also have risen.

A steam accumulator is an insulated steel pressure tank containing hot water and steam under pressure. It is a type of energy storage device. It can be used to smooth out peaks and troughs in demand for steam.



High-pressure steam storage tank

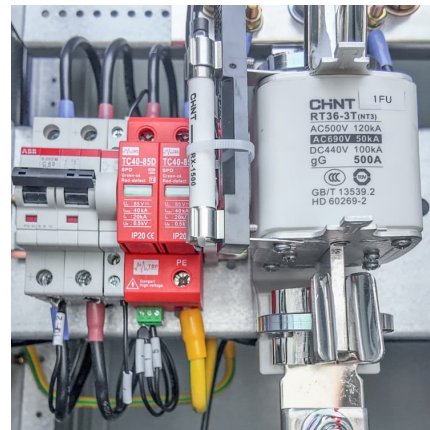


Types and Classes of Pressure Tanks

Chapter 2: What are the classes and types of pressure tanks? This chapter will explore the various classes and types of pressure tanks, providing valuable ...

Cal/OSHA Pressure Vessels

Cal/OSHA Pressure Vessels Pressure Vessels Pressure Vessel Unit The pressure vessel unit is responsible under Labor Code sections 7620-7771 for the inspection of boilers (any fired or ...



BP Process Safety Series

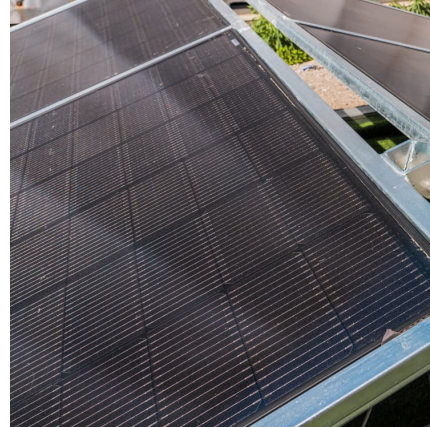
blanket a storage tank. Therefore, attempts to blanket a storage tank usually result in increasing the hazard by heating the liquid in the tank above its flash point without adding enough steam ...

Custom High Pressure Storage Tanks: Engineered for Extreme ...

Explore custom high pressure storage tanks from Roben Mfg. Co., Inc., offering reliable solutions for high-pressure containment needs. Contact us



today.



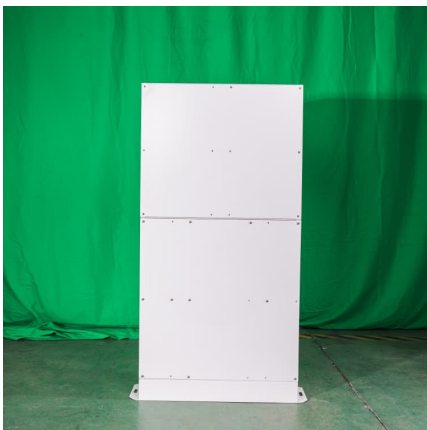
[For Low and High Pressure Steam Boilers](#)

For Low and High Pressure Steam Boilers Rite's feedwater return systems are engineered for the safe and efficient storage and pumping of condensate and make-up water back to the boiler. ...



Choose AV Steam Storage Tanks designed by Fiorini Industries

Fiorini AV accumulator tanks are designed to contain steam at high pressure, in full respect of the P.E.D. Directive 2014/68/EU. These steam accumulator tanks are mainly ...



Steam Accumulators , SpringerLink

The core idea of steam accumulators is to use water both as a heat transfer medium and as a storage medium. Liquid water is an excellent storage medium due to its high ...

Flash Tanks



American Wheatley HVAC Flash Tanks are designed for systems that require flashing of high-pressure condensate into steam for low-pressure heating supply mains. They are also used to ...



High pressure steam tank

The array of high pressure steam tanks includes models like expansion vessels, which alleviate pressure from heating systems, and variants tailored for fluid and gas storage.



Condensate management

High-pressure condensate tank If several steam consumers equipped with heating surfaces are designed for a steam pressure which remains more or less the same in the high-pressure ...



ASME Storage Tanks

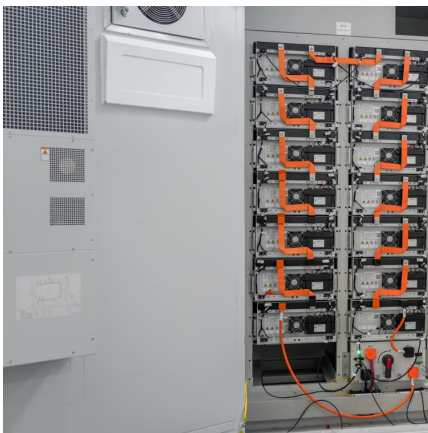
Designed for flashing of high pressure condensate into steam and low pressure heating supply mains. Flash tanks also reduce steam pressure prior to returning to either condensate tanks, ...





THE PRESSURIZED CONDENSATE RECOVERY SYSTEM

The most efficient system is a condensate return system controlled at a pressure as close to the boiler operating pressure as possible. In a perfect system, the steam system would operate at ...



High Pressure Condensate Receiving Systems

The higher the temperature or pressure (direct relationship in steam) of the condensate being returned to the boiler plant, the less energy required to raise the temperature of the condensate ...

FTB Interactions can someone walk me through basic gregtech setup ...

Small notes: -Boiler will auto-output, so you can put it directly on the tinker tank input drain.
-upgrade to the high-pressure boiler once you have some steel. -astral tree beacon will be your ...



Steam Boilers

Chromalox Packaged Electric Boilers offer the advantage of electricity as the heat source to provide low or high pressure steam or hot water. Building and installation costs are reduced ...



Compressed Gas Storage Solutions

Wilco(TM) high-pressure gas storage vessels store compressed natural gas (CNG) at fueling stations, as well as gases such as nitrogen, oxygen, helium, argon, ...



[Steam accumulator: ThermalBattery\(TM\) in comparison](#)

When steam is supplied, it condenses in the water contained in the storage tank, causing the water level to rise and creating excess pressure ...

Condensate Recovery Piping

Considering steam vapor when designing condensate recovery piping may at first seem counterintuitive, but is in fact necessary. This is due to a phenomenon known as flash ...



Performances and control aspects of steam storage systems with ...

The most widespread steam storage system is steam accumulators, also called Ruths storage, where water saturated vapor is stored in pressurized vessels, in thermal ...



[Condensate Recovery: Vented vs. Pressurized ...](#)

Vented vs. Pressurized Condensate Recovery In a vented condensate recovery system, steam trap inlet pressure or a condensate pump is used to return ...



[Pressure Vessels vs Storage Tanks: Major Differences](#)

Pressure vessels and storage tanks differ in several aspects, such as shape, purpose, construction, orientation, mounting, material, size, cost, and heating method.

[Flash Tank: The Ultimate FAQ Guide - Filson Filter](#)

Flash tank, on the other hand is a system that aids in bursting of high-pressure condensate into steam as well as low pressure heating supply ...



Fiorini Industries Pressure Tanks made ad hoc for all your needs

The inertial steam storage tanks are used to support industrial steam generators with a "lung" function, storing pressurised steam in liquid form. The stored steam is reused to manage peak ...



Steam Accumulators

Steam accumulators also differ in operating behavior from two tank storage concepts; most systems deliver steam at sliding pressure during discharge, and exergetic efficiency is limited. ...



0519

Condenser Hotwell Objective 1.a Purpose - Provides a storage reservoir for condensed steam. Hotwell is located in the bottom section of the condenser. Condenser Hotwell level control via ...

Contact Us

For catalog requests, pricing, or partnerships, please visit:
<https://www.conrad.edu.pl>