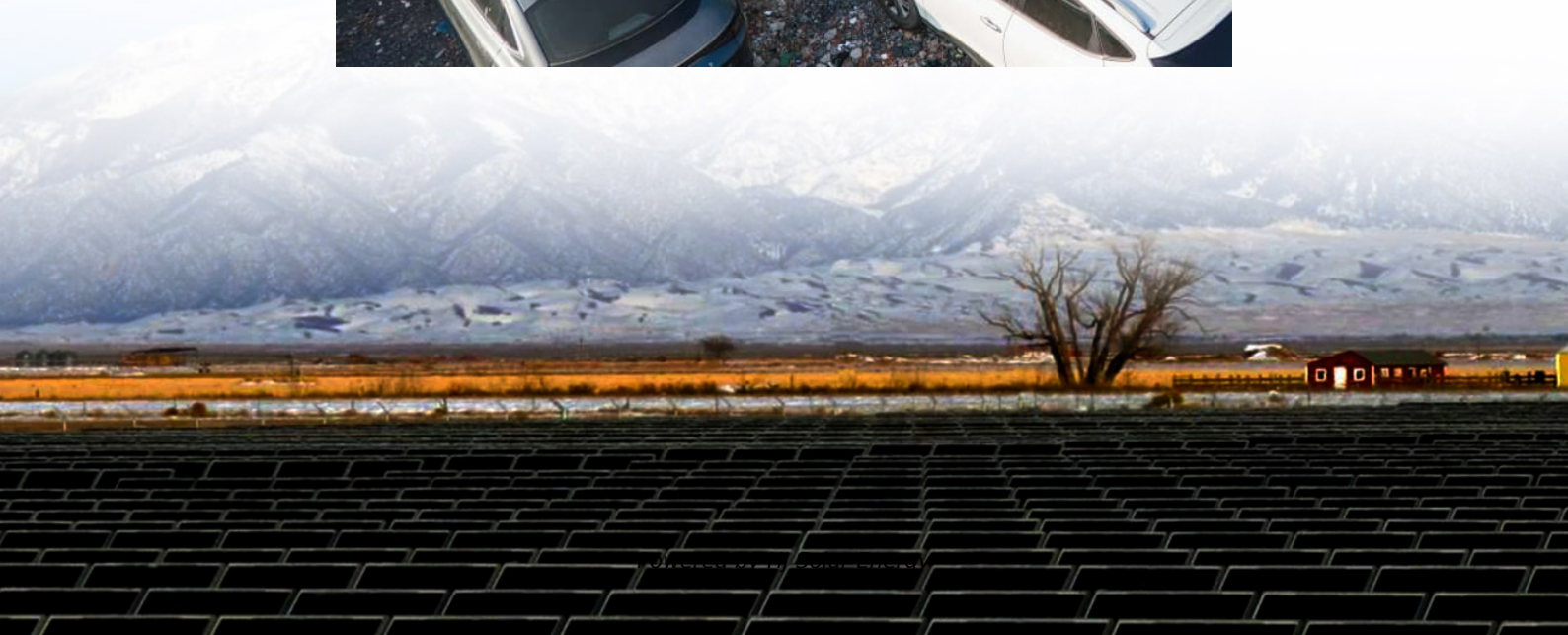


# Hme solar 12v battery instructions





## Overview

---

What is an HME solar 12V battery?

An HME solar 12V battery is a device that stores energy captured by your solar panels. This stored energy can power your home during a power outage or when grid electricity is unavailable. HME solar batteries come in many different sizes and capacities, so you can choose the one that best meets your needs.

How do HME solar batteries work?

The charging process for an HME solar battery is pretty simple. During the daytime, when your solar panels collect energy from the sun, that energy is used to charge the batteries. The amount of stored energy will depend on factors like the size of your battery and the hours of sunlight each day.

How efficient are HME solar battery packs?

HME solar battery packs typically have an efficiency rating of around 80%. This means that around 80% of the electricity they receive from your solar panels will be stored in the batteries. If it's blown, you'll need to replace it before the panel starts charging again.

What is a 12V battery pack with solar panel?

Extend your trail cameras field life with HMEs 12V Battery pack with Solar Panel. This rugged weatherproof battery box contains a sealed 12V lead acid battery - ideal for extreme temperatures, and pre-attached solar panel for continual charging.

How long does it take to charge an HME solar battery?

It takes around 8 hours to charge an HME solar battery in most cases. Of course, other options are also available if you want to speed up the charging process or have a larger capacity than what's available through standard outlets. For example, many companies offer high-powered chargers that can



juice up your batteries in just 2-3 hours.

Why do HME solar batteries have a higher discharge depth?

A higher discharge depth means more electricity can be drawn from the unit before it needs to be recharged. HME solar battery packs typically have an efficiency rating of around 80%. This means that around 80% of the electricity they receive from your solar panels will be stored in the batteries.



## Hme solar 12v battery instructions

---



### [Troubleshooting Hme Solar Power Panel Not Charging](#)

The instructions for the hme 12V solar auxiliary power pack would typically include guidelines for installation, connection, and maintenance. For precise instructions, refer ...

### [12V/Solar Auxiliary Power Pack , HME Products](#)

Extend your trail cameras field life with HMEs 12V Battery pack with Solar Panel. This rugged weatherproof battery box contains a sealed 12V lead acid battery - ideal for extreme ...



### [12V/Solar Auxiliary Power Pack , HME Products](#)

Extend your trail cameras field life with HMEs 12V Battery pack with Solar Panel. This rugged weatherproof battery box contains a sealed 12V lead acid battery - ideal for extreme temperatures, and pre-attached solar ...



### [Troubleshooting Hme Solar Power Panel Not Charging](#)

The instructions for the hme 12V solar auxiliary power pack would typically include guidelines for installation, connection, and maintenance. For



precise instructions, refer to the user manual provided by the ...



### HME Solar Battery Box Instructions: Your Ultimate Guide to ...

Let's cut to the chase--if you've landed here, you're either a DIY solar enthusiast, a homeowner tired of sky-high electricity bills, or someone who just bought an HME ...



### How To Charge Hme Solar Battery

HME solar batteries can be charged effectively during peak sunlight hours (10 a. m. to 3 p. m.), AC power charging when solar energy is low, and DC power charging with a ...



### HME Solar 12V Battery Instructions: Your Ultimate Guide to ...

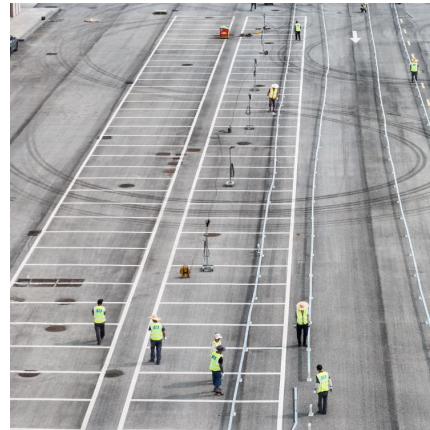
The HME Solar 12V battery is a game-changer for renewable energy storage, but let's face it--instruction manuals can be as confusing as assembling IKEA furniture without ...





### [How Do You Charge HME Solar Battery? \(Charging Guideline\)](#)

Solar batteries typically come with a built-in charger, so all you need to do is plug them into an outlet. Once plugged in, the charger will automatically start charging the ...



### [How Do You Charge HME Solar Battery? \(Charging Guideline\)](#)

HME solar batteries can be charged effectively during peak sunlight hours (10 a. m. to 3 p. m.), AC power charging when solar energy is low, and DC power charging with a ...

## Contact Us

---

For catalog requests, pricing, or partnerships, please visit:  
<https://www.conrad.edu.pl>