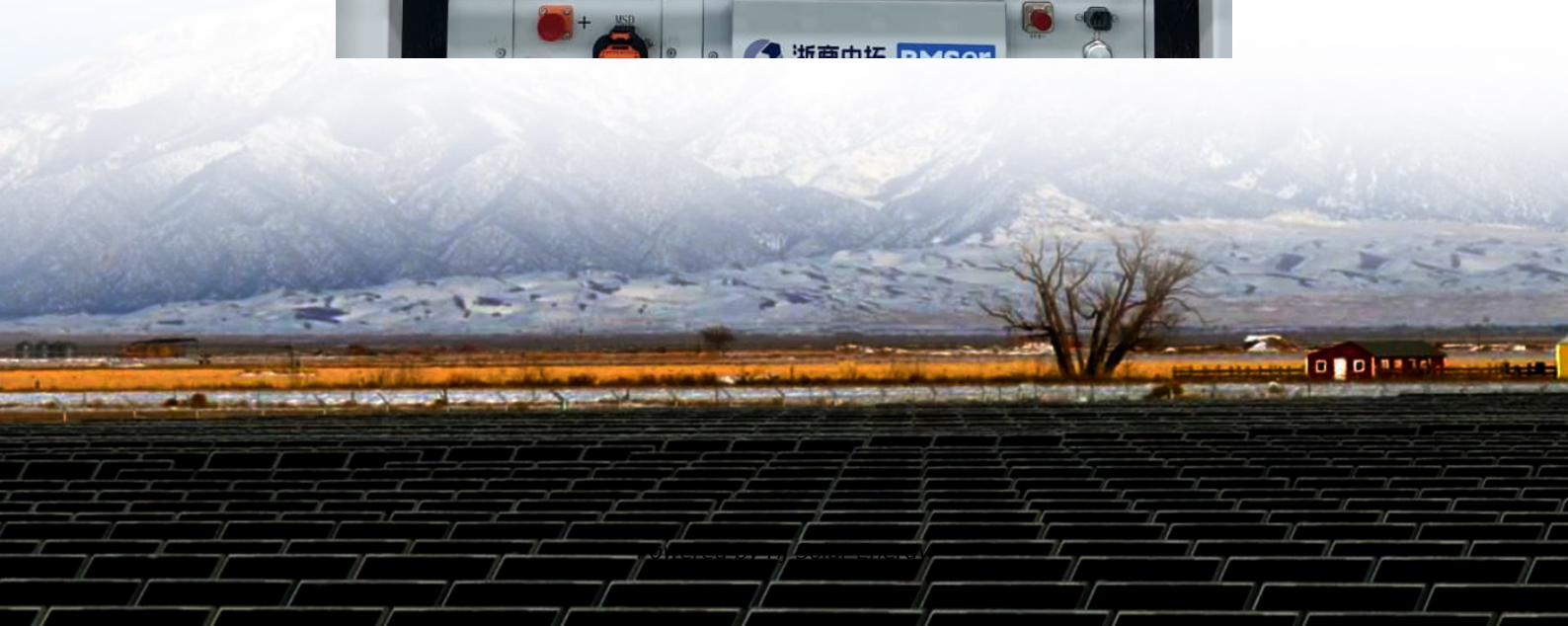


# How about pumped storage power plants





## Overview

---

Pumped-storage hydroelectricity (PSH), or pumped hydroelectric energy storage (PHES), is a type of hydroelectric energy storage used by electric power systems for load balancing. A PSH system stores energy in the form of gravitational potential energy of water, pumped from a lower elevation reservoir to a higher.

A pumped-storage hydroelectricity generally consists of two water reservoirs at different heights, connected with each other. At times of low.

In closed-loop systems, pure pumped-storage plants store water in an upper reservoir with no natural inflows, while pump-back plants utilize a combination of pumped storage and conventional with an upper reservoir that is.

The main requirement for PSH is hilly country. The global greenfield pumped hydro atlas lists more than 800,000 potential sites around the.

Seawater Pumped storage plants can operate with seawater, although there are additional challenges compared to using fresh water, such as saltwater.

Taking into account conversion losses and evaporation losses from the exposed water surface, of 70–80% or more can be achieved. This technique is currently the most cost.

Water requirements for PSH are small: about 1 gigalitre of initial fill water per gigawatt-hour of storage. This water is recycled uphill and back downhill between the two reservoirs for many decades, but evaporation losses (beyond what rainfall and any inflow from local.

The first use of pumped storage was in 1907 in , at the Engeweiher pumped storage facility near Schaffhausen, Switzerland. In the 1930s reversible hydroelectric.

Pumped storage plants are a combination of energy storage and power plant. They utilise the elevation difference between an upper and a lower storage basin. Pumps driven by electric motor- generators move water from the lower to the upper basin, thereby storing potential energy.



Pumped storage plants are a combination of energy storage and power plant. They utilise the elevation difference between an upper and a lower storage basin. Pumps driven by electric motor- generators move water from the lower to the upper basin, thereby storing potential energy.

Pumped-storage hydroelectricity (PSH), or pumped hydroelectric energy storage (PHES), is a type of hydroelectric energy storage used by electric power systems for load balancing. A PSH system stores energy in the form of gravitational potential energy of water, pumped from a lower elevation.

Pumped storage hydropower (PSH) is a type of hydroelectric energy storage. It is a configuration of two water reservoirs at different elevations that can generate power as water moves down from one to the other (discharge), passing through a turbine. The system also requires power as it pumps water.

plants are reversible hydroelectric facilities where water is pumped uphill into a reservoir. The force of the water flowing back down the hill is then harnessed to produce Form of energy resulting from the movement of charged particles (electrons) through a conduct. in the same way as.

However, unlike run-of-river or reservoir power plants, pumped storage plants enable us to store and schedule hydroelectric power generation, while also playing a crucial role in stabilizing the power grid. Storage hydropower plants, also called pumped storage plants, are facilities that produce.

Pumped storage hydropower (PSH) is a form of clean energy storage that is ideal for electricity grid reliability and stability. PSH complements wind and solar by storing the excess electricity they create and providing the backup for when the wind isn't blowing, and the sun isn't shining. PSH.

Pumped storage plants are a combination of energy storage and power plant. They utilise the elevation difference between an upper and a lower storage basin. Pumps driven by electric motor- generators move water from the lower to the upper basin, thereby storing potential energy. For electricity.



## How about pumped storage power plants

---

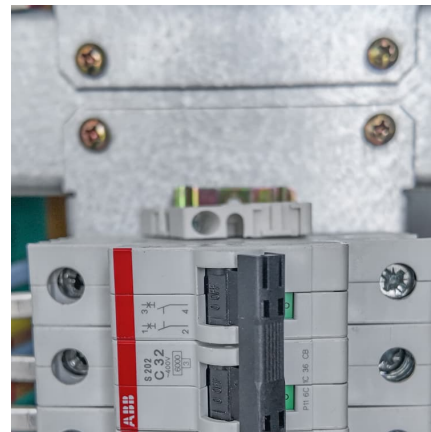


### Pumped Storage Plants

Pumped Storage Plants - PSP Policy and guidelines Expression of Interest (EOI) to Empanel geological experts: Request for Expression of Interest (EOI) from Competent experts for ...

### Pumped storage hydropower operation for supporting clean

Pumped storage hydropower stores energy and provides services for the electrical grid. This Review discusses the types, applications and broader effects of this form of ...



### A Review of Technology Innovations for Pumped Storage ...

As the power system undergoes rapid changes, pumped storage hydropower (PSH) is an important energy storage technology that has significant capabilities to support high ...



### Pumped Storage Hydropower

Pumped storage hydro - "the World's Water Battery" Pumped storage hydropower (PSH) currently accounts for over 90% of storage capacity and stored energy in grid scale ...



### **A study on site selection of pumped storage power plants based ...**

Pumped storage power plants (PSPP), as an important clean energy technology, have great potential for energy storage and conditioning. However, site selection is ...



### [PUMPED STORAGE PLANTS - ESSENTIAL FOR INDIA'S ...](#)

Ministry of Power has, in April 2023, notified the guidelines to promote pumped storage projects. The Report on "Pumped Storage Plants - essential for India's Energy Transition" recommends ...



### **Research on development demand and potential of pumped storage power**

To address the problem of unstable large-scale supply of China's renewable energy, the proposal and accelerated growth of new power systems has promoted the ...





### [The History of Helms, PG& E's Underground Power Plant](#)

Hidden in a granite cavern deep within California's Sierra Nevada mountains sits the Helms Pumped Storage Power Plant. This hydroelectric marvel generates over 1,200 ...



### [SECTION 3: PUMPED-HYDRO ENERGY STORAGE](#)

The rate at which energy is transferred to the turbine (from the pump) is the power extracted from (delivered to) the water where is the ??? volumetric 3 flow rate of the water

### [What is a pumped-storage hydroelectric power plant?](#)

A pumped-storage hydroelectric power plant--also known as a reversible plant--is one of the most efficient large-scale energy storage ...



### [Pumped storage hydropower: Water batteries for solar ...](#)

Pumped storage hydropower (PSH) is a form of clean energy storage that is ideal for electricity grid reliability and stability. PSH complements wind and solar by ...



## Technology Strategy Assessment

About Storage Innovations 2030 This report on accelerating the future of pumped storage hydropower (PSH) is released as part of the Storage Innovations (SI) 2030 strategic initiative.

...



## Pumped-Storage Hydro Plants

A pumped-storage plant works much like a conventional hydroelectric station, except the same water can be used over and over again. Water power uses no fuel in the generation of ...

## [Pumped Storage Hydropower : Working. Types.](#)

...

Pumped storage hydropower plants can play a key role in the future of energy, contributing to grid stabilization, renewable energy storage and reduced ...



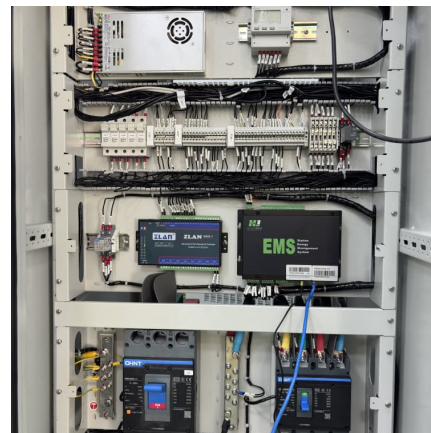


### **National Hydropower Association 2021 Pumped Storage Report**

Executive Summary This is the third Pumped Storage Report White Paper prepared by the National Hydropower Association's Pumped Storage Development Council (Council). The first ...

### [The 10 Largest Pumped-Storage Hydropower Plants ...](#)

Pumped-storage hydroelectricity, a mature technology first developed in the 1890s, is playing an increasingly important role in the current ...



### [Pumped Storage Hydropower: Advantages and Disadvantages](#)

Pumped storage hydropower is a type of hydroelectric power generation that plays a significant role in both energy storage and generation. At its core, you've got two reservoirs, one up high, ...

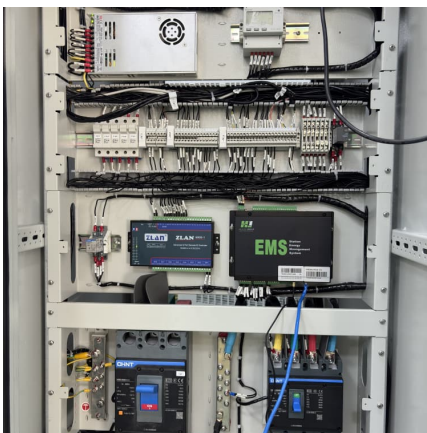
### [DOE ESHB Chapter 9: Pumped Hydroelectric Storage](#)

Abstract Pumped hydroelectric storage (PHS) is the most widely used electrical energy storage technology in the world today. It can offer a wide range of services to the modern-day power ...



[Kühtai Pumped Storage Power Plant, Austria](#)

The storage power plant project, another storage lake and a pumped storage power plant are being built as the second upper stage of the existing Sellrain-Silz power plant group. With this ...



**What is Pumped Storage?**

Pumped storage power plants are hydroelectric power stations that store and reuse energy. They have two reservoirs at different elevations to store and generate electricity. ...



**Pumped storage hydropower: Water batteries for solar and wind**

Pumped Storage Hydropower Water batteries for the renewable energy sector Pumped storage hydropower (PSH) is a form of clean energy storage that is ideal for electricity grid reliability ...





### **Pumped storage hydropower operation for supporting clean**

Pumped storage hydropower (PSH) provides the largest form of energy storage in power grids, with 179 GW installed globally as of 2023.



### **Technical Considerations in the Preliminary Design of the Pumped**

The development of renewable energy is an effective avenue for achieving net zero goals. It requires many energy storage systems (ESSs) for adjusting the unstable power ...

## **Contact Us**

---

For catalog requests, pricing, or partnerships, please visit:  
<https://www.conrad.edu.pl>