

How long can the energy storage mwh be discharged





Overview

Storage duration is the amount of time storage can discharge at its power capacity before depleting its energy capacity. For example, a battery with 1 MW of power capacity and 4 MWh of usable energy capacity will have a storage duration of four hours.

Storage duration is the amount of time storage can discharge at its power capacity before depleting its energy capacity. For example, a battery with 1 MW of power capacity and 4 MWh of usable energy capacity will have a storage duration of four hours.

A battery energy storage system (BESS) is an electrochemical device that charges (or collects energy) from the grid or a power plant and then discharges that energy at a later time to provide electricity or other grid services when needed. Several battery chemistries are available or under.

Energy Capacity (MWh) indicates the total amount of energy a BESS can store and subsequently deliver over time. It defines the duration for which the system can supply power before recharging is necessary. For instance, a BESS with an energy capacity of 20 MWh can provide 10 MW of power.

1. 1 MW energy storage can discharge approximately 1 megawatt of power for a limited duration, depending on the specific design and capacity of the storage system, typically lasting from 1 to 4 hours, thereby providing about 1 megawatt-hour (MWh) of energy to the grid, efficient for stabilizing.

Power capacity refers to the greatest amount of energy a battery can discharge in a given moment. Batteries used for grid services have relatively short average durations. A battery's average duration is the amount of time a battery can contribute electricity at its nameplate power capacity until.

us charging/discharging capability. Example: A 1 MW system can charge/discharge 1,000 kWh (1 MWh) per hour, determining its ability to handle short-term high-power demands, such as grid frequency regulation or sudden load responses. 2. MWh (Megawatt-hour) ?



?

?

The ?

?

?

Endurance?

?

?

of Energy Stor.

When we talk about energy storage duration, we're referring to the time it takes to charge or discharge a unit at maximum power. Let's break it down: Battery Energy Storage Systems (BESS): Lithium-ion BESS typically have a duration of 1-4 hours. This means they can provide energy services at their. What is energy storage duration?

When we talk about energy storage duration, we're referring to the time it takes to charge or discharge a unit at maximum power. Let's break it down: Battery Energy Storage Systems (BESS): Lithium-ion BESS typically have a duration of 1-4 hours. This means they can provide energy services at their maximum power capacity for that timeframe.

What is storage duration?

Storage duration is the amount of time storage can discharge at its power capacity before depleting its energy capacity. For example, a battery with 1 MW of power capacity and 4 MWh of usable energy capacity will have a storage duration of four hours.

How long can a 2 MW / 4 MWh Bess deliver?

A 2 MW / 4 MWh BESS can continuously deliver 2 MW for 2 hours before it runs empty. A 1 MW / 4 MWh BESS can deliver 1 MW for 4 hours with the same energy storage. Key Consideration: Ensure your system's power rating matches your peak demand while energy capacity meets your storage



duration needs. 2. Depth of Discharge (DoD).

What is the difference between rated power capacity and storage duration?

Rated power capacity is the total possible instantaneous discharge capability (in kilowatts [kW] or megawatts [MW]) of the BESS, or the maximum rate of discharge that the BESS can achieve, starting from a fully charged state. Storage duration is the amount of time storage can discharge at its power capacity before depleting its energy capacity.

How long does a battery energy storage system last?

Let's break it down: Battery Energy Storage Systems (BESS): Lithium-ion BESS typically have a duration of 1–4 hours. This means they can provide energy services at their maximum power capacity for that timeframe. Pumped Hydro Storage: In contrast, technologies like pumped hydro can store energy for up to 10 hours.

How long does a battery charge & discharge?

1C Rate: The battery charges/discharges in 1 hour (e.g., a 100 kWh battery discharges at 100 kW). 0.5C Rate: The battery discharges in 2 hours (e.g., 100 kWh battery discharges at 50 kW). 2C Rate: The battery discharges in 30 minutes (e.g., 100 kWh battery discharges at 200 kW).



How long can the energy storage mwh be discharged



[Technical Specifications of Battery Energy Storage ...](#)

Definition Key figures for battery storage systems provide important information about the technical properties of Battery Energy Storage Systems (BESS). ...

HOW TO INTERPRET ENERGY STORAGE MWH

How do you calculate mw? Simply use the formula: $\text{Power (MW)} = \frac{\text{Energy (MWh)}}{\text{Time (hours)}}$ to find the average power generated for a certain period by dividing the energy by its ...



[What is energy storage MWh . NenPower](#)

Among the four aspects, it's essential to elaborate on the definition of MWh. One megawatt-hour signifies the amount of energy equivalent to one megawatt of power used ...

[Basics of BESS \(Battery Energy Storage System\)](#)

Basic Terms in Energy Storage Cycles: Each number of charge and discharge operation C Rate: Speed or time taken for charge or discharge, faster means more power. SoC: State



of Charge, ...



[Energy Storage FAQs , Lightsource bp](#)

Utility-scale or grid-scale battery storage refers to technologies connected to the power grid that can store energy in rechargeable batteries and then supply it ...



How much energy can lithium-ion batteries store? , NenPower

Energy storage capabilities of lithium-ion batteries are profound, merging impressive energy density with numerous applications. With the potential for advancements in ...



Difference Between MW and MWH

2 ???· Running a business means watching energy use closely. Costs are up, and things like solar panels and battery storage are becoming common. But ...



Solved Problem 1. At a given time, the loads and losses in

A battery energy storage system is used to maintain the power balance. How long can this situation last if the battery is initially fully discharged and has an energy capacity of 24 MWh? ...



Energy Storage Feasibility and Lifecycle Cost Assessment

To evaluate the technical, economic, and operational feasibility of implementing energy storage systems while assessing their lifecycle costs. This analysis identifies optimal storage ...

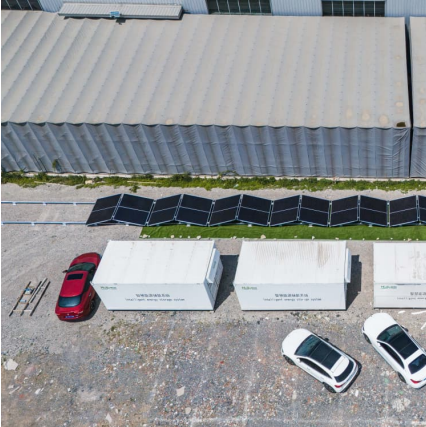
HOW TO INTERPRET ENERGY STORAGE MWH

What does MW mean in energy storage? In energy storage systems, MW indicates instantaneous charging/discharging capability. Example: A 1 MW system can charge/discharge 1,000 kWh (1 ...



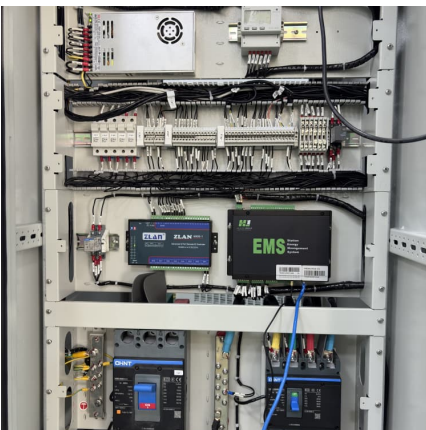
Comprehensive Guide to Key Performance Indicators of Energy Storage

Understanding key performance indicators (KPIs) in energy storage systems (ESS) is crucial for efficiency and longevity. Learn about battery capacity, voltage, charge ...



Battery Energy Storage Systems FAQ

The amount of energy a BESS can store per unit volume - known as the energy density - continues to increase. Today, a unit the size of a 20-foot shipping container holds enough ...



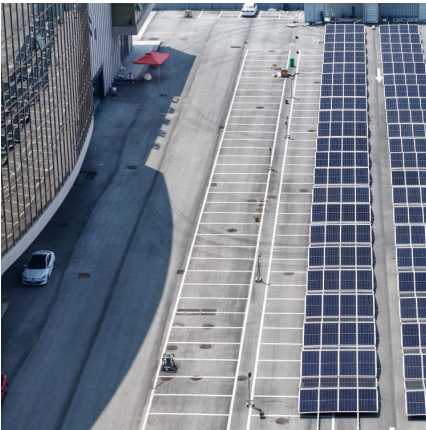
[Understanding Battery Energy Storage System ...](#)

It means that higher energy is wasted (during charge-discharge) when flow batteries are preferred over Lithium-ion batteries. Usable Energy: ...

[What is the unit of energy storage MWh? . NenPower](#)

Energy storage in MWh enables flexibility by accommodating fluctuations in energy demand and generation, promoting a more balanced and sustainable energy ...





billyprim

What is storage duration? Storage duration is the amount of time storage can discharge at its power capacity before depleting its energy capacity. For example, a battery with 1 MW of power ...

SOLVED: 'Problem 1. At given time, the loads and losses in

A battery energy storage system is used to maintain the power balance. How long can this situation last if the battery is initially fully discharged and has an energy capacity of 24 MWh? ...



Energy storage: It's not just size that counts, but how ...

The seasonality of supply is a big deal, and requires very long duration storage. Our modelling of South Australia shows that 4-10 hour ...

[The Duration of Battery Energy Storage: All depends ...](#)

FPL announced the startup of the Manatee solar-storage hybrid late last year, calling it the world's largest solar-powered battery this week. The ...



MW to MWh Calculator

Introduction When it comes to battery energy storage systems, we hear about two units very often, i.e, MW (megawatt) vs MWh (megawatt-hour) or "the difference between ...

[Measuring Battery Electric Storage System ...](#)

Energy storage capacity: The amount of energy that can be discharged by the battery before it must be recharged. It can be compared to the output of a ...



Key Performance Indicators for Battery Energy Storage Systems ...

It is expressed in kilowatt-hours (kWh) or megawatt-hours (MWh) and largely determines how long the system can discharge at a given power level. Usable vs. nominal ...

[Understanding Energy Storage Duration](#)



Pumped Hydro Storage: In contrast, technologies like pumped hydro can store energy for up to 10 hours. For example, the Dinorwig Power Station in North ...



Energy Storage Capacity and Discharge Time: The Power Duo ...

Finding the perfect match between energy storage capacity and discharge time is like dating - you want enough chemistry to last the night, but not so intense it burns out by ...

Contact Us

For catalog requests, pricing, or partnerships, please visit:
<https://www.conrad.edu.pl>